



The walk to White Rock from Wallagoot Gap is an excellent way to experience the Bournda National Park coastline. The walk is scattered with many views of the coastline, with Games Bay, about halfway, a nice spot to cool down. The White Rocks provide a great picnic area (no facilities) for lunch before returning to Wallagoot car park.

Bournda National Park

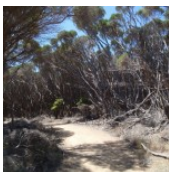
Length: 9 km
Time: 3 hrs 30 mins
Climb: 398 m
Style: Return
Rating: Track: Hard
Where: 5.8 km S of Tathra
Transport: car



Visit www.wildwalks.com for more info



Side trips and Alternate routes mentioned in these notes are not included in the tracks overall rating, distance or time estimate. The notes only describe the side trips and Alternate routes in one direction. Allow extra time for resting and exploring areas of interest. Please ensure you and your group are well prepared and equipped for all possible hazards and delays. The authors, staff and owners of wildwalks take care in preparing these notes but will not accept responsibility for any inconvenience, loss or injury sustained by using these notes or maps. Please take care and share your experience through the website. Please check park closures, weather information and Fire Danger Rating just before leaving for your walk. Walk maybe closed during Total Fire Ban. GPS for start and end of this walk: -36.785,149.9611



National Parks Association of NSW - Learn more about the NPA www.npansw.org.au

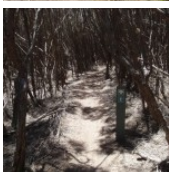
Walk with a club - Enjoy bushwalking and make new friends (community announcement)

The NPA is more than just a bushwalking club. We are a conservation group that helps protect natural places. As a member you can join any of our 1000 guided walks each year and enjoy our quarterly Magazine 'Nature NSW'. Membership fee is just \$65 per year, concession fee also available. [Learn More...](#)



Wallagoot Beach Carpark to Int. Wallagoot Gap and Kangarutha Trks 0.2km 4 mins

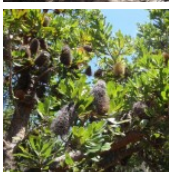
(From S) (Wallagoot car park is found at the end of Wallagoot Lake Rd, off the Sapphire Coast Drive.) This walk leaves the car park along the track between the information sign (on the right) and toilet (on the left), heading between two cut logs. The wide track dips through a valley then heads over a rise, coming to a signposted intersection (with a timber platform on the right).



Int. Wallagoot Gap and Kangarutha Trks to Wallagoot Gap 0.1km 2 mins Optional Side Trip:

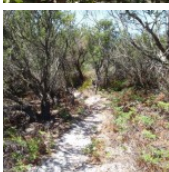
(From 0.22 km) Veer right: From the intersection, the walk heads to the timber platform then down the timber steps onto Wallagoot Gap Beach.

(Retrace your steps back to the main track, then turn right to continue along this walk.)



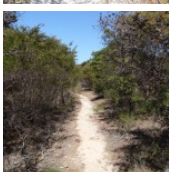
Wallagoot Gap

Wallagoot Gap is situated south of Tathra, facing east out onto the South Pacific Ocean. The gap is created by two headlands that protect the main beach from the wind. A second beach can be found around the corner of Wallagoot Gap, by following the right-hand side wall. Wallagoot Gap is an excellent place for a swim or a play in the sand. The gap can be accessed from Wallagoot Beach car park at the end of Wallagoot Lake Rd or the Kangarutha Track.



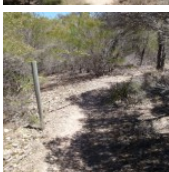
Int. Wallagoot Gap and Kangarutha Trks to Games Bay 2.4km 45 mins

(From 0.22 km) Turn left: From the intersection, this walk follows the 'Kangarutha Walking Track' arrow through the trees, keeping the coast to the right. The track winds for some time, with the ocean far below to the right of the track. The track winds back and forth for quite some time, with posts leading the way through areas of open and closed vegetation. The walk then turns left into a Games Bay, a large bay, with many access track leading down to the ocean on the right of the track. This walk leads around the bay to turn right, down to into the sandy Games Bay. The small bushes at the back of the bay hide the signpost for 'Games Bay'.



Games Bay

Games Bay, Bournda National Park, is located along the Kangarutha Track, south of Tathra. The bay is formed by two rocky sides, and backed by a sandy beach. Games Bay Creek runs through the beach out to sea, but flows intermittently. The bay is named after Mr Games, a settler who cleared and used the surrounding area of the bay for dairy farming. Mr Games also made a track from Games Bay to White Rock. The bay is backed by a small fireplace with driftwood seats around it.





Games Bay to Int. White Rock Rd and Kangarutha Trk Sth 1.6km 30 mins

(From 2.62 km) Turn left: From the sandy creek bed at the back of Games Bay, this walk follows the track marker arrow up the hill, keeping the ocean to the right. The walk winds up the stairs to a signposted intersection.

Veer right: From the intersection, this walk follows the arrow across the hill. The track meanders for a short time to then wind down steps to a sandy river bed at the peak of a bay, with an easy-to-miss signpost for 'Games Bay'.

Turn left: From the intersection, this walk heads up the hill away from the valley, keeping the ocean on the right. The track leads up to an area of tall bush trees, then tends left down the hill. The walk continues along the hillside, keeping the ocean on the right. The track meanders through the heath, passing a few good viewing points of the coast. The walk then meets a large black termite mound, where the track turns left up the hill. The track continues up the hill, tending right to then go down a slight hill to a signposted intersection with a management trail.



Int. White Rock Rd and Kangarutha Trk Sth to White Rock Carpark 0.2km 4 mins

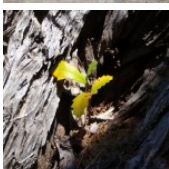
(From 4.22 km) Veer right: From the intersection, this walk heads down the hill following the track marker arrow. The track heads down the hill for a short time to another track marker on the left of the management trail.

Continue straight: From the intersection, this walk heads down the hill towards the ocean. The track soon tends right, down to a cul-de-sac in the management trail.



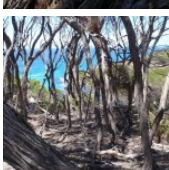
White Rock Carpark to White Rock Nth route 0.1km 2 mins

(From 4.38 km) Continue straight: On the side of the car park where the road leads up the hill, this walk follows track around the cliff tops, keeping the small bay below on the left. The track heads around the small hill (above on the right), leading to a point on the white rock which overlooks the sea and surrounding coast.



White Rock

White Rock, Bournda National Park, as the name suggests, is an area of white coloured rocks, south of Tathra. The rocks form the headland with spectacular views of the coastline both to the North and South, and across the South Pacific Ocean. White Rock car park is backed by an old quarry, which formed the amphitheatre of rock behind it. White Rock can be accessed by White Rock Rd, off the Snowy Mountains Highway.

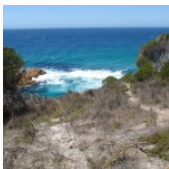


This is a 'Return' style walk - retrace your steps back to the beginning when you are ready.

A list of paper topographical maps that cover this walk

[Wolumla](#) 1:25 000 Map Series

Bega 1:100 000 Map Series



Nearby outdoor and camping stores

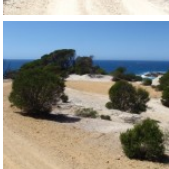
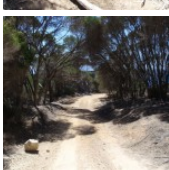
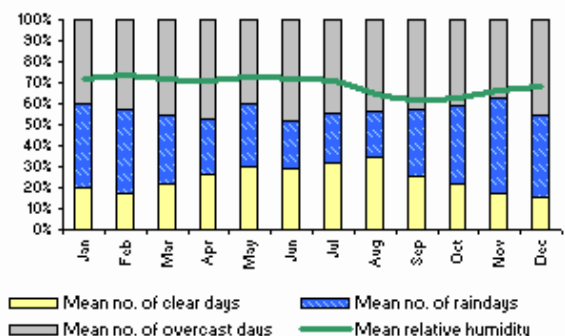
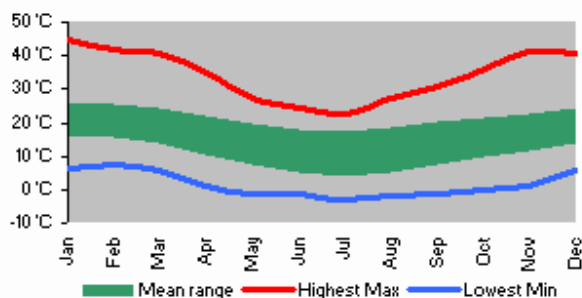
Camping Plus 6 Alice St Merimbula (02) 6495 2571

Gas Connection The Arthur Kaine Drv Pambula (02) 6495 7121

Barbeques Galore (Bega) 274 Carp St Bega (02) 6492 4054

Camping Outdoors Centre 43 Vulcan St Moruya (02) 4474 3081

Gone Fishin Cnr Ford & Queen Sts Moruya (02) 4474 4381



Join Australia's largest Bushwalking Club

• Explore new places • Make new friends • Over 1000 guided walks every year
Join NPA in 2012 and receive a free bushwalking guide book.

bushwalks@npansw.org.au

www.npansw.org.au

(02) 9299 0000



Photo: © Henry Gold

Map Scale 1 km



Base map is used under licence and is (c) Department of lands Panorama Avenue Bathurst 2795 www.lands.nsw.gov.au

