



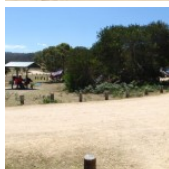
Wallagoot Gap is a spectacular gorge, cut into the rock by the ocean. The Gap is a popular swimming spot where the water is channeled over a small reef and through the tall rock walls. The seclusion created by the tall walls of the beach give some protection from the wind and waves, but there is no lifeguard patrol. The walk down to Wallagoot Gap is well signposted and well maintained.

Bournda National Park

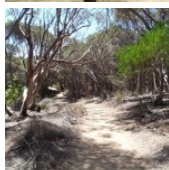
**Length:** 0.6 km  
**Time:** 15 mins  
**Climb:** 22 m  
**Style:** Return  
**Rating:** Walk: Easy  
**Where:** 5.8 km S of Tathra  
**Transport:** car



Visit [www.wildwalks.com](http://www.wildwalks.com) for more info



*Side trips and Alternate routes mentioned in these notes are not included in the tracks overall rating, distance or time estimate. The notes only describe the side trips and Alternate routes in one direction. Allow extra time for resting and exploring areas of interest. Please ensure you and your group are well prepared and equipped for all possible hazards and delays. The authors, staff and owners of wildwalks take care in preparing these notes but will not accept responsibility for any inconvenience, loss or injury sustained by using these notes or maps. Please take care and share your experience through the website. Please check park closures, weather information and Fire Danger Rating just before leaving for your walk. Walk maybe closed during Total Fire Ban. GPS for start and end of this walk: -36.785,149.9611*



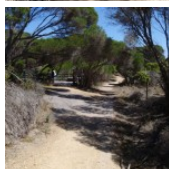
### Wildwalks



Download the free [Bushwalk Australia eMag](http://bushwalk.com)

The eMagazine is produced by the community at [bushwalk.com](http://bushwalk.com) and the Wildwalks team  
[Bushwalk.com](http://bushwalk.com) Australia's most active bushwalking forum - Check it out.

Happy Reading. Matt :)



### Wallagoot Beach Carpark to Wallagoot Gap 0.3km 5 mins

(From S) (Wallagoot car park is found at the end of Wallagoot Lake Rd, off the Sapphire Coast Drive.) This walk leaves the car park along the track between the information sign (on the right) and toilet (on the left), heading between two cut logs. The wide track dips through a valley then heads over a rise, coming to a signposted intersection (with a timber platform on the right).

Veer right: From the intersection, the walk heads to the timber platform then down the timber steps onto Wallagoot Gap Beach.



### Wallagoot Gap

Wallagoot Gap is situated south of Tathra, facing east out onto the South Pacific Ocean. The gap is created by two headlands that protect the main beach from the wind. A second beach can be found around the corner of Wallagoot Gap, by following the right-hand side wall. Wallagoot Gap is an excellent place for a swim or a play in the sand. The gap can be accessed from Wallagoot Beach car park at the end of Wallagoot Lake Rd or the Kangarutha Track.

This is a 'Return' style walk - retrace your steps back to the beginning when you are ready.

### A list of paper topographical maps that cover this walk

[Wolumla](http://Wolumla) 1:25 000 Map Series

Bega 1:100 000 Map Series

### Nearby outdoor and camping stores

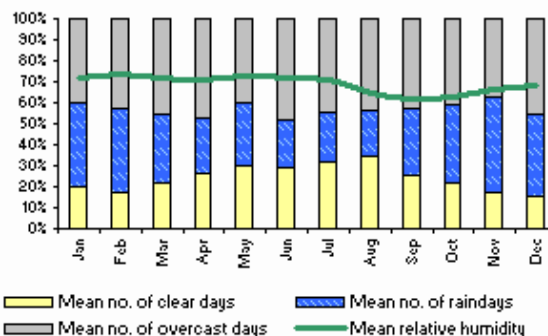
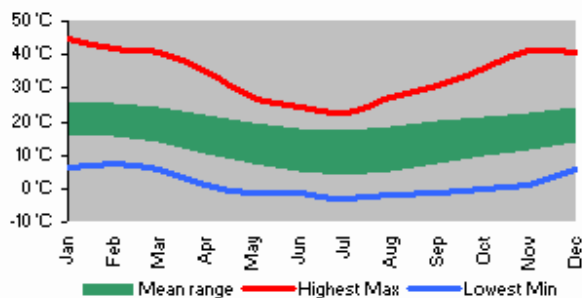
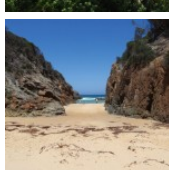
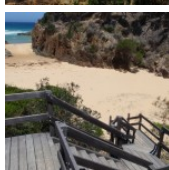
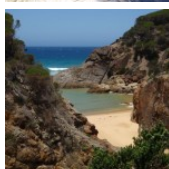
**Camping Plus** 6 Alice St Merimbula (02) 6495 2571

**Gas Connection The** Arthur Kaine Drv Pambula (02) 6495 7121

**Barbeques Galore (Bega)** 274 Carp St Bega (02) 6492 4054

**Camping Outdoors Centre** 43 Vulcan St Moruya (02) 4474 3081

**Gone Fishin** Cnr Ford & Queen Sts Moruya (02) 4474 4381



This space is available for advertising



Full colour  
Great photos



Give the joy of walking to a friend  
(and support wildwalks)

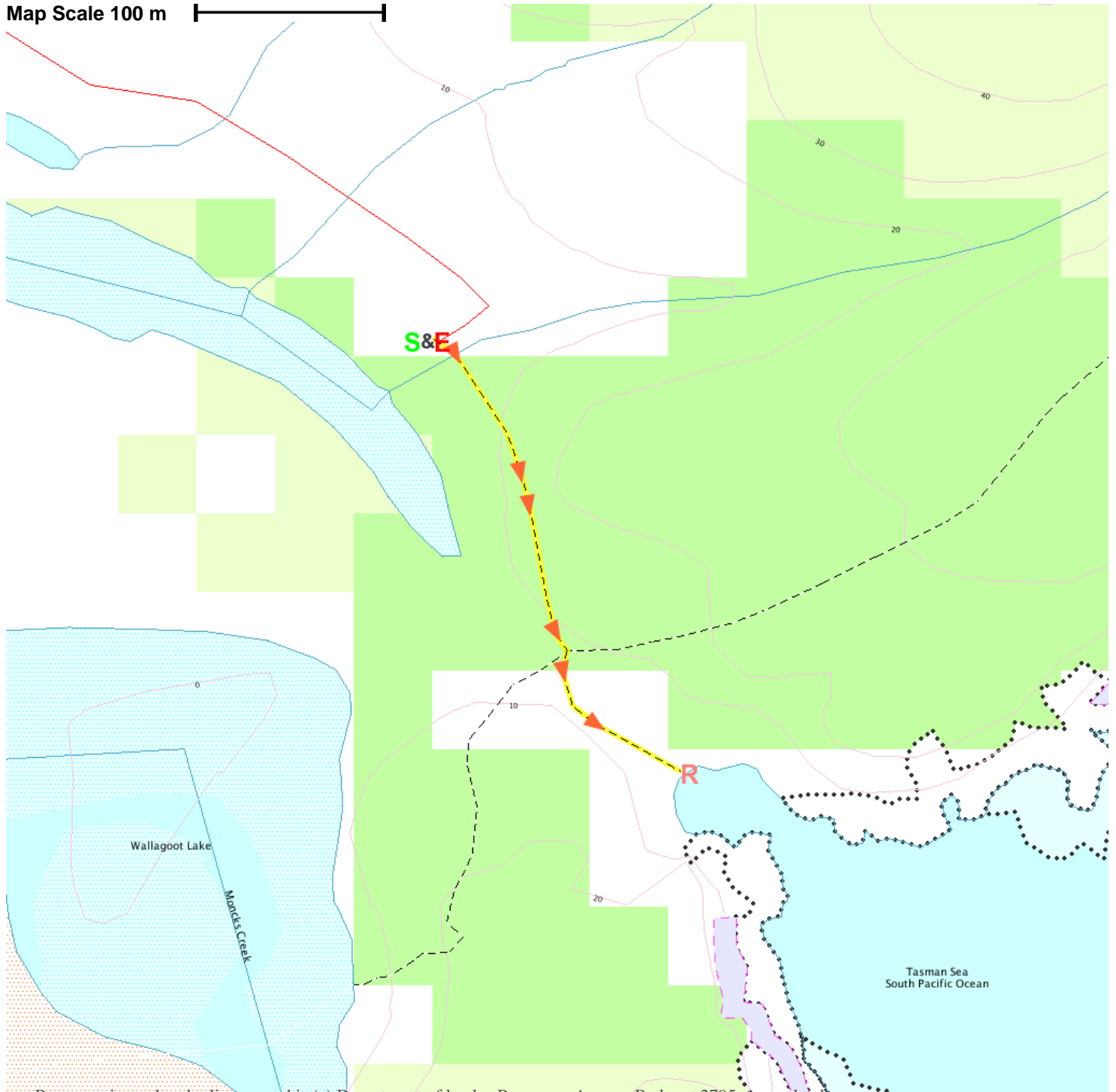
[www.wildwalks.com/books.html](http://www.wildwalks.com/books.html)



A walk for every body



Map Scale 100 m



Base map is used under licence and is (c) Department of lands Panorama Avenue Bathurst 2795 [www.lands.nsw.gov.au](http://www.lands.nsw.gov.au)

