



Tunnel View Walk is a short walk along a well-maintained fire trail. Although you can see where the train tunnel goes through the hill, you can't see the actual tunnel. You do get great views of Glenbrook Creek Gorge, the Blue Mountains and Sydney.

Blue Mountains National Park

Length: 0.5 km
Time: 30 mins
Climb: 10 m
Style: Return
Rating: Walk: Easy
Where: 7.9 km WSW of Penrith
Transport: car



Visit www.wildwalks.com for more info



Side trips and Alternate routes mentioned in these notes are not included in the tracks overall rating, distance or time estimate. The notes only describe the side trips and Alternate routes in one direction. Allow extra time for resting and exploring areas of interest. Please ensure you and your group are well prepared and equipped for all possible hazards and delays. The authors, staff and owners of wildwalks take care in preparing these notes but will not accept responsibility for any inconvenience, loss or injury sustained by using these notes or maps. Please take care and share your experience through the website. Please check park closures, weather information and Fire Danger Rating just before leaving for your walk. Walk maybe closed during Total Fire Ban. GPS for start and end of this walk: -33.7861,150.6269



Wildwalks

Download the free Bushwalk Australia eMag

The eMagazine is produced by the community at bushwalk.com and the Wildwalks team
Bushwalk.com Australia's most active bushwalking forum - Check it out.

Happy Reading. Matt :)



Tunnel View car park to Tunnel View Lookout 0.3km 5 mins

(From S) From the car park on Mount Portal Trail (about 1.3km from the Euroka Rd turn off), this walk follows the 'Tunnel View Lookout' sign past the locked gate and large 'Blue Mountains National Park' information sign. The walk follows the wide and gently winding management trail. The trail soon leads to a 'Tunnel View Lookout' sign and just beyond it is the unfenced cliff top lookout.

This is a 'Return' style walk - retrace your steps back to the beginning when you are ready.

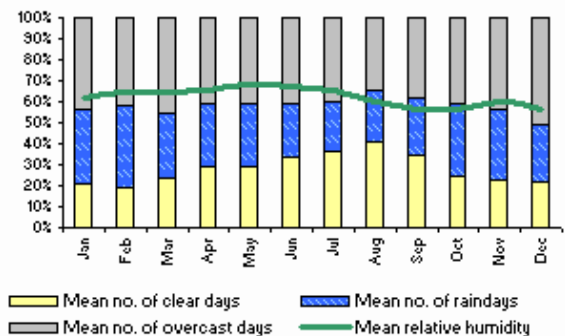
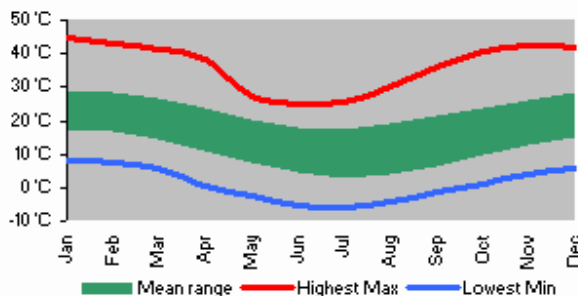
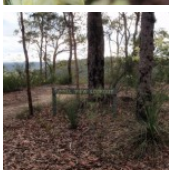
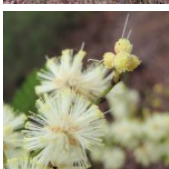
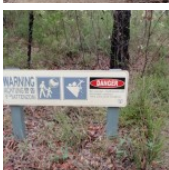
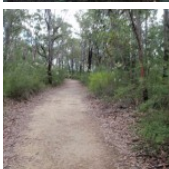


A list of paper topographical maps that cover this walk

- [Penrith 1:25 000 Map Series](#)
- [Penrith 1:100 000 Map Series](#)

Nearby outdoor and camping stores

- Summit Gear** 11 Ross St Glenbrook (02) 4739 4373
- Boots Great Outdoors** Shop 25 Home Centre Wolseley St Penrith (02) 4733 5744
- Kangaroo Tent City** Cnr Mulgoa & Blaikie Rds Penrith (02) 4733 4111
- Getaway Disposals** 549 High St Penrith (02) 4732 2285
- Mitchell Adventure** 24 Henry St Penrith (02) 4731 8482



This space is available for advertising



Full colour
Great photos



Give the joy of walking to a friend
(and support wildwalks)

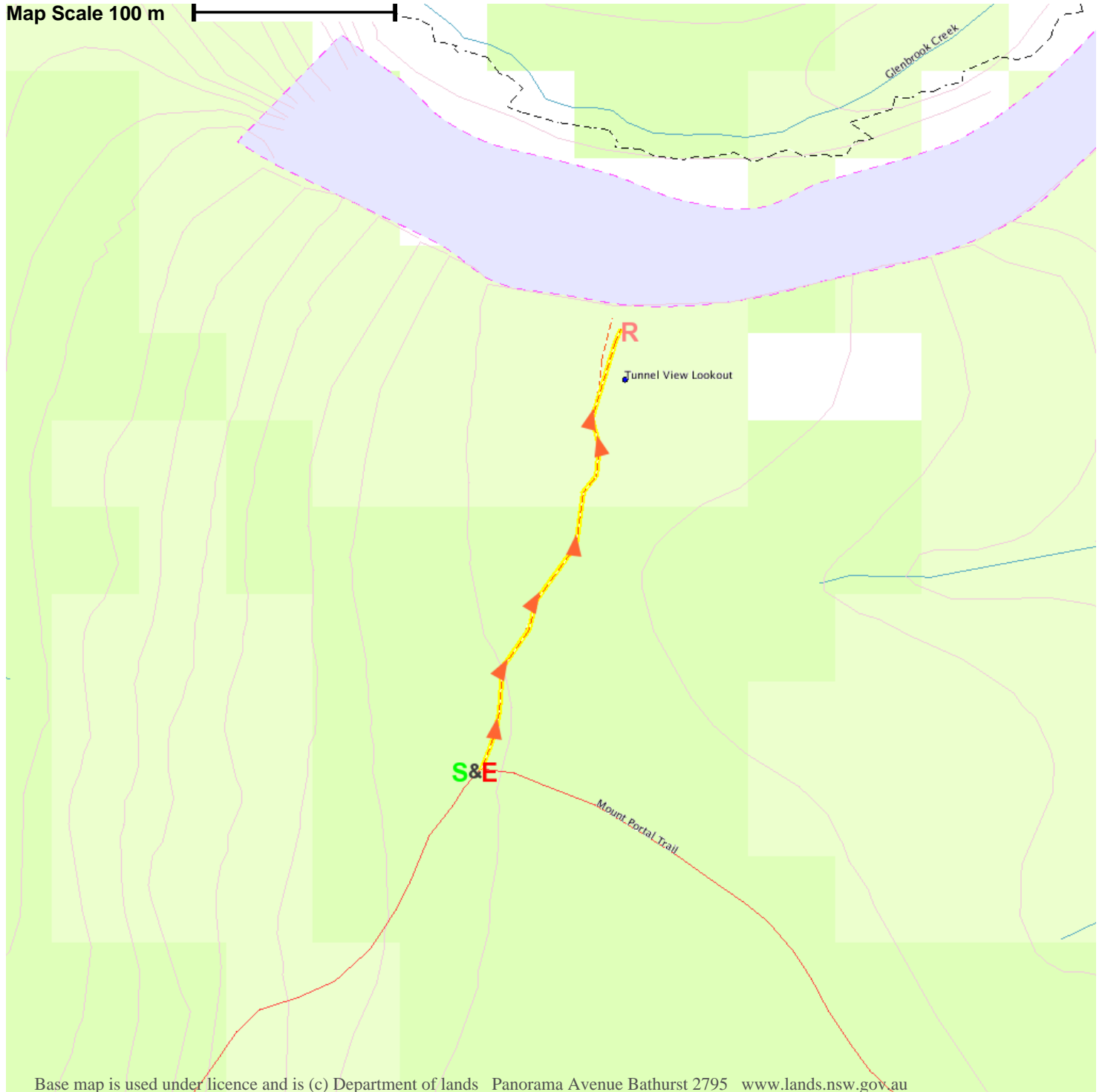
www.wildwalks.com/books.html



A walk for every body



Map Scale 100 m



Base map is used under licence and is (c) Department of lands Panorama Avenue Bathurst 2795 www.lands.nsw.gov.au

