



This is a short walk along a popular horse riding trail, going to a great lookout over Bobbin Head. The lookout is a lovely spot, so allow time just to sit on the boulders and enjoy the view.

Ku-ring-gai Chase National Park

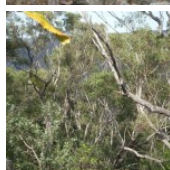
Length: 1.6 km
Time: 45 mins
Climb: 55 m
Style: Return
Rating: Track: Moderate
Where: 5 km WNW of Terrey Hills
Transport: car



Visit www.wildwalks.com for more info



Side trips and Alternate routes mentioned in these notes are not included in the tracks overall rating, distance or time estimate. The notes only describe the side trips and Alternate routes in one direction. Allow extra time for resting and exploring areas of interest. Please ensure you and your group are well prepared and equipped for all possible hazards and delays. The authors, staff and owners of wildwalks take care in preparing these notes but will not accept responsibility for any inconvenience, loss or injury sustained by using these notes or maps. Please take care and share your experience through the website. Please check park closures, weather information and Fire Danger Rating just before leaving for your walk. Walk maybe closed during Total Fire Ban. GPS for start and end of this walk: -33.6689,151.1817

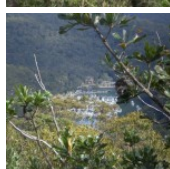


Wildwalks

Download the free Bushwalk Australia eMag

The eMagazine is produced by the community at bushwalk.com and the Wildwalks team
Bushwalk.com Australia's most active bushwalking forum - Check it out.

Happy Reading. Matt :)



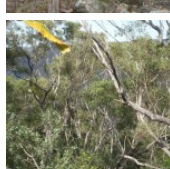
End of Booralie Rd to Int of Booralie Trail and Cullamine Track 0.1km 1 mins

(From S) From the end of Booralie Rd, this walk bypasses the gate, signposted as the 'Booralie Namba Trail' and heads north-west along the management trail for approximately 100m before coming to an intersection with several other management trails.



Int of Booralie & Cullamine Track to Int of Slade & Duffys Wharf Track 0.2km 4 mins

(From 0.07 km) Continue straight: From the intersection, this walk passes the gate signposted as the 'Booralie Trail' and heads north-west along the management trail. the walk soon comes to an intersection with another management trail signposted with 'Slade Trail' and 'Duffys Wharf'



Int of Slade and Duffys Wharf Track to Slade Lookout 0.5km 10 mins

(From 0.28 km) Continue straight: From the intersection, this walk heads south-west along the flat management trail for approximately 500m before coming to Slades Lookout, which offers views over Cowan Creek as far as Bobbin Head Reserve.

This is a 'Return' style walk - retrace your steps back to the beginning when you are ready.

A list of paper topographical maps that cover this walk

Hornsby 1:25 000 Map Series

Ku-ring-gai Chase National Park Tourist Map 1:40 000 Map Series

Sydney 1:100 000 Map Series



Nearby outdoor and camping stores

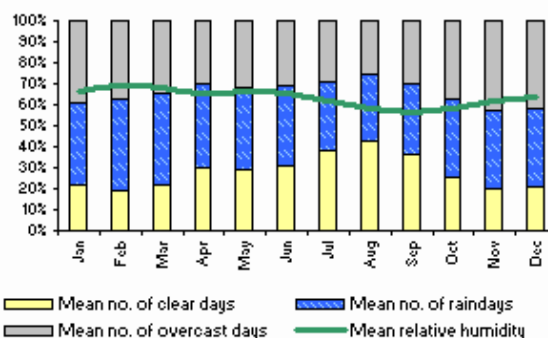
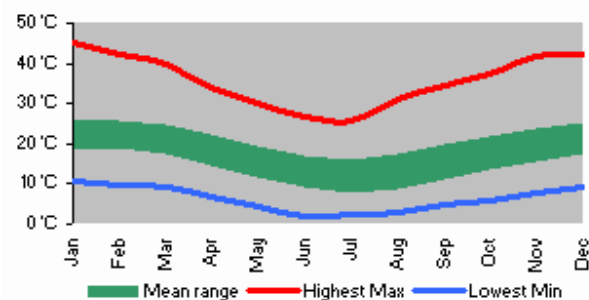
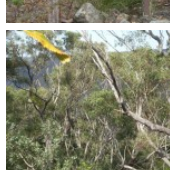
Kathmandu 236 Pacific Hwy (Westfield) Hornsby (02) 9476 1399

CampHikeClimb 20 George St Hornsby (02) 9476 5767

Paddlecraft 3B / 1714 Pittwater Road Bayview 02 9997 8015

Mountain Equipment 72 Archer St Chatswood (02) 9419 6955

Larry Adler Ski & Outdoor 77 Archer St Chatswood (02) 9412 4777



This space is available for advertising



Full colour
Great photos



Give the joy of walking to a friend
(and support wildwalks)

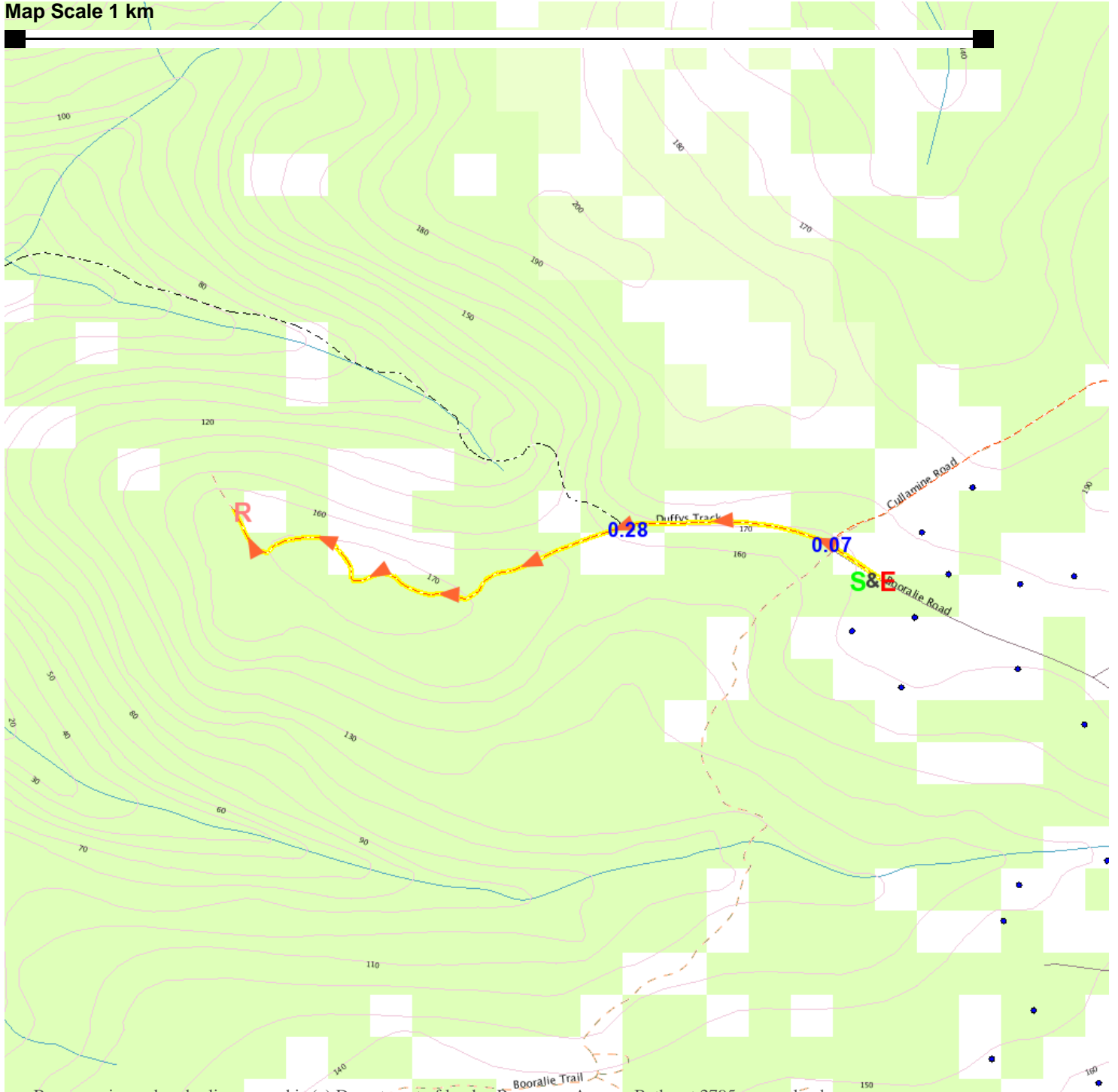
www.wildwalks.com/books.html



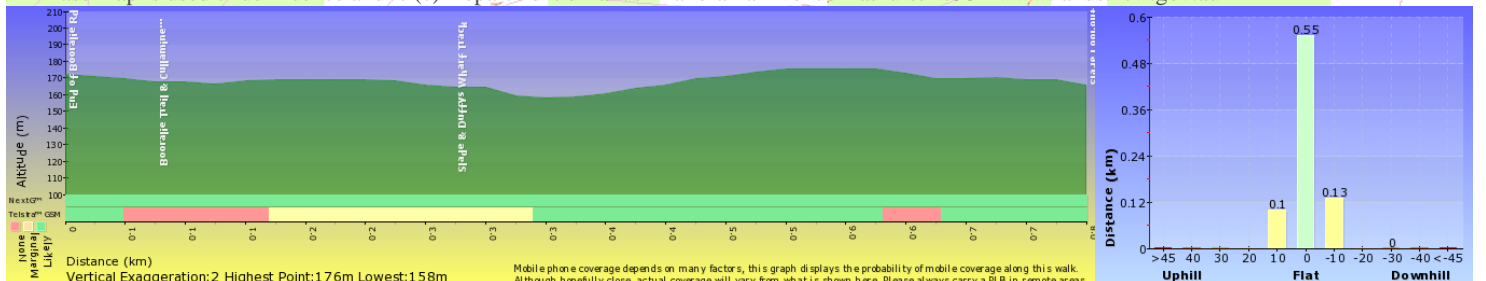
A walk for every body



Map Scale 1 km



Base map is used under licence and is (c) Department of lands Panorama Avenue Bathurst 2795 www.lands.nsw.gov.au



Mobile phone coverage depends on many factors, this graph displays the probability of mobile coverage along this walk. Although hopefully close, actual coverage will vary from what is shown here. Please always carry a PLB in remote areas.