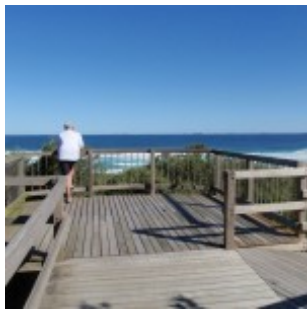


# Tea Tree Picnic Area to Bird Island Lookout



This short walk leads from the Tea Tree Picnic Area to the Bird Island Lookout. The view from the fenced platform looks up and down Birdie Beach, and out to sea to Bird Island. The walk starts from the car park and heads across the compacted dirt, then a mulched path, before finally heading up a timber ramp to the lookout. A short walk to a grand view.

Munmorah State Conservation Area

**Length:** 0.2 km  
**Time:** 3 mins  
**Climb:** 3 m  
**Style:** Return  
**Rating:** Path: Easy - Wheelchair accessible  
**Where:** 4.6 km NE of Budgewoi  
**Transport:** car



Visit [www.wildwalks.com](http://www.wildwalks.com) for more info



*Side trips and Alternate routes mentioned in these notes are not included in the tracks overall rating, distance or time estimate. The notes only describe the side trips and Alternate routes in one direction. Allow extra time for resting and exploring areas of interest. Please ensure you and your group are well prepared and equipped for all possible hazards and delays. The authors, staff and owners of wildwalks take care in preparing these notes but will not accept responsibility for any inconvenience, loss or injury sustained by using these notes or maps. Please take care and share your experience through the website. Please check park closures, weather information and Fire Danger Rating just before leaving for your walk. Walk maybe closed during Total Fire Ban. GPS for start and end of this walk: -33.2058,151.6029*



## Wildwalks

Download the free [Bushwalk Australia eMag](http://bushwalk.com)

The eMagazine is produced by the community at [bushwalk.com](http://bushwalk.com) and the Wildwalks team

[bushwalk.com](http://bushwalk.com) Australia's most active bushwalking forum - Check it out.

Happy Reading. Matt :)



## Tea Tree Picnic area

Tea Tree Picnic area is near the end of Birdie Beach Rd in Munmorah State Conservation Area. There is a fair-sized car park, two BBQs in a shelter and a couple of picnic tables. An information sign marks the start of a track, leading to a lookout and to Birdie Beach. There is limited shade, but the heath provides fair protection from the afternoon sea breeze. A quiet picnic area, great if visiting the beach. A track leads to Birdie Beach car park and toilet block.



## Tea Tree Picnic area to Bird Island Lookout 0.1km 1 mins

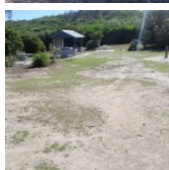
(From S) From the behind the 'Welcome to Tea Tree Picnic Area' information sign, this walk follows the track away from the car park and soon passes a 'Seabird Survival' information sign and moves onto a timber boardwalk. The walk follows the timber boardwalk a short distance to the fenced and un-signposted lookout.



## Bird Island Lookout

Near Tea Tree Picnic area, this lookout provides a great view over Birdie Beach. Looking left is the northern end of Birdie Beach and Red Ochre Beach (a nude bathing beach). Looking right, there is a view further down Birdie Beach and out to Bird Island. The lookout has a timber ramp leading up to the fenced, raised platform.

This is a 'Return' style walk - retrace your steps back to the beginning when you are ready.



## A list of paper topographical maps that cover this walk

[Catherine Hill Bay](#) 1:25 000 Map Series

[Lake Macquarie](#) 1:100 000 Map Series



## Nearby outdoor and camping stores

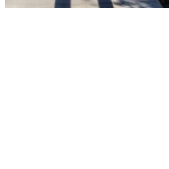
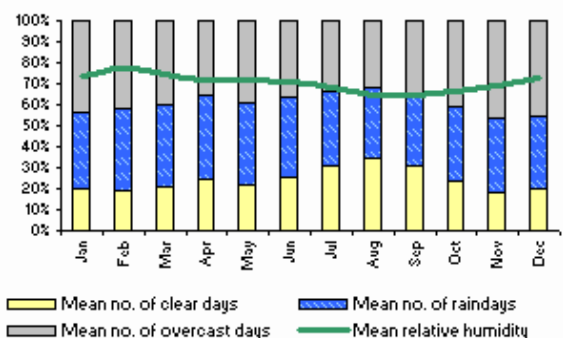
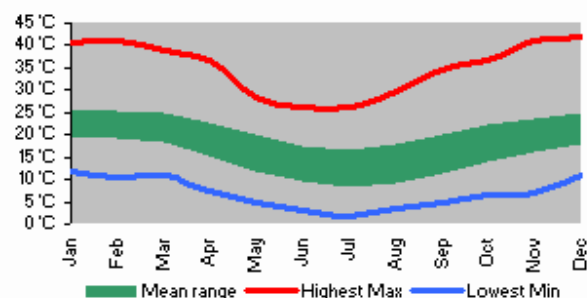
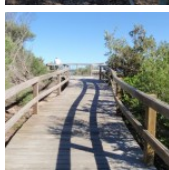
**Lake Macquarie Kayaks & Camping** Unit 1 61 Alliance Ave Morisset (02) 4973 2028

**Central Coast Canvas** 33 Holloway Drv Jilliby (02) 4353 9885

**Camping Country** 401 Pacific Hwy Belmont North (02) 4945 1555

**Wyong Warehouse & Camping World** 59 Howarth St Wyong (02) 4352 1501

**Kangaroo Tent City & BBQs** Homemakers Supa Centre Cnr Wyong Rd & Bryant Drv Tuggerah (02) 4353 4335





# Tea Tree Picnic Area to Bird Island Lookout

This space is available for advertising



Full colour  
Great photos



Give the joy of walking to a friend  
(and support wildwalks)

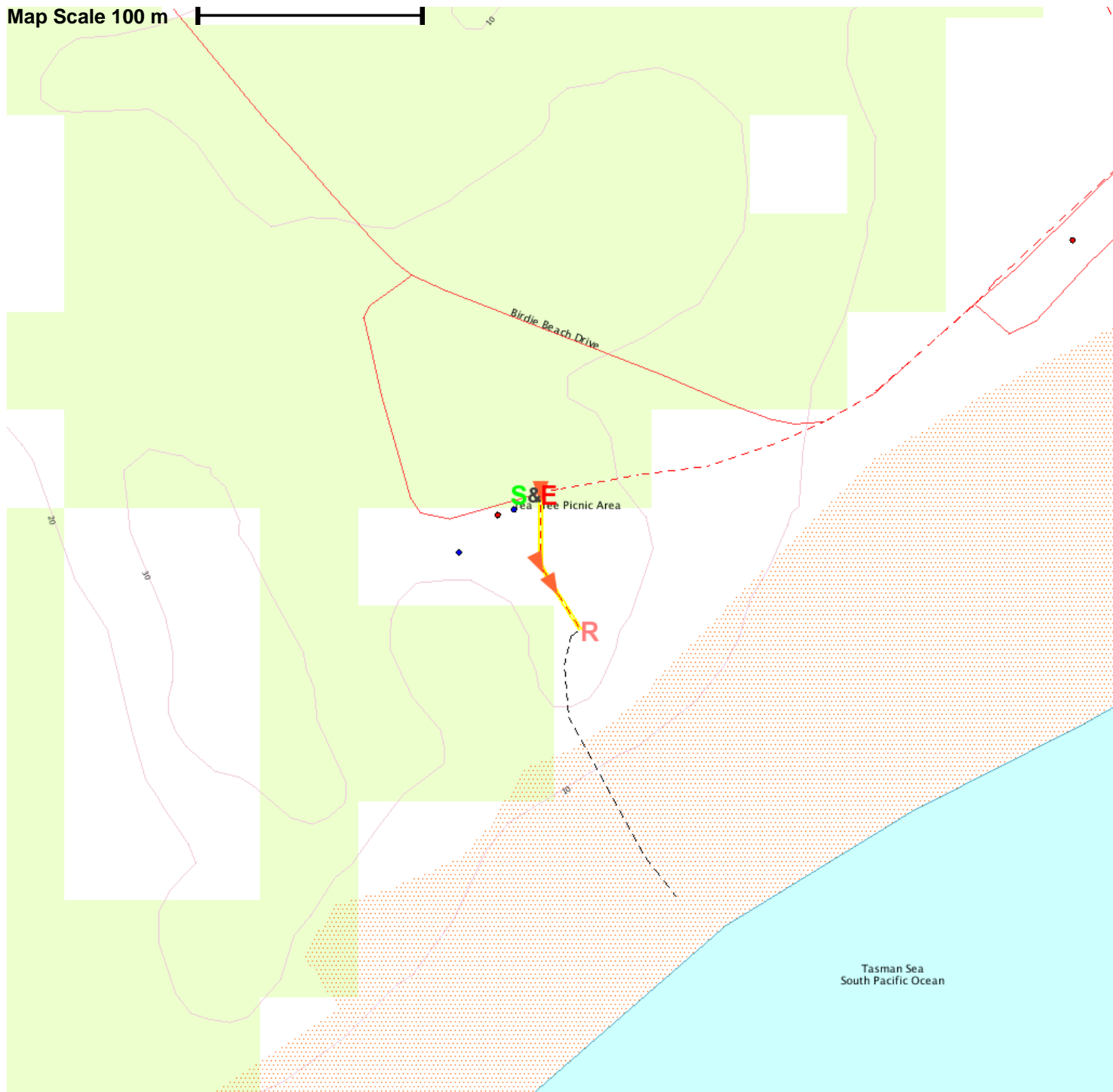
[www.wildwalks.com/books.html](http://www.wildwalks.com/books.html)



A walk for every body



Map Scale 100 m



Base map is used under licence and is (c) Department of lands Panorama Avenue Bathurst 2795 [www.lands.nsw.gov.au](http://www.lands.nsw.gov.au)

