



This walk circumnavigates Coal Mine Creek on good trails. The walk starts and finishes at Richley Reserve, which has excellent picnic facilities combined with a lovely outlook over large ponds. The well established eucalyptus forest that this walk travels through surrounds you as you walk along these trail. This is a good walk which is made all the more pleasant by using the excellent facilities of Richley Reserve in Blackbutt Reserve.

**Length:** 2.8 km  
**Time:** 1 hr 15 mins  
**Climb:** 90 m  
**Style:** Circuit  
**Rating:** Track: Moderate  
**Where:** 2.4 km W of Adamstown  
**Transport:** bus car



Visit [www.wildwalks.com](http://www.wildwalks.com) for more info



*Side trips and Alternate routes mentioned in these notes are not included in the tracks overall rating, distance or time estimate. The notes only describe the side trips and Alternate routes in one direction. Allow extra time for resting and exploring areas of interest. Please ensure you and your group are well prepared and equipped for all possible hazards and delays. The authors, staff and owners of wildwalks take care in preparing these notes but will not accept responsibility for any inconvenience, loss or injury sustained by using these notes or maps. Please take care and share your experience through the website. Please check park closures, weather information and Fire Danger Rating just before leaving for your walk. Walk maybe closed during Total Fire Ban. GPS for start and end of this walk: -32.9324,151.7*



## Wildwalks

Download the free [Bushwalk Australia eMag](http://Bushwalk Australia eMag)

The eMagazine is produced by the community at [bushwalk.com](http://bushwalk.com) and the Wildwalks team  
[Bushwalk.com](http://Bushwalk.com) Australia's most active bushwalking forum - Check it out.

Happy Reading. Matt :)



## Blackbutt Reserve

Blackbutt Reserve, near Newcastle, occupies over 182 hectares of land and provides visitors with the chance to enjoy nature trails, wildlife exhibits, children's playgrounds and recreational facilities. The reserve is the perfect place for a relaxing family picnic or to explore on a bushwalk. Native wildlife, such as the Powerful Owl and the Grey-headed flying fox can be seen within the park. There is an information cottage at Carnley Avenue, which is open 7am to 5pm, or 7am to 7pm during daylight savings. The reserve has car parking at Carnley Avenue, Richley Reserve, Lookout Road and Mahonoy Drive. For more information, phone 02 4904 3344.



## Richley Reserve

The Richley Reserve, within Blackbutt Reserve, has a park office, large pond areas with swans (beware the swans as they defend their territory), sheltered picnic tables, water taps, toilets, open grassed areas, a children's playground, electric barbecues and a car park. The Richley Reserve car park has disability friendly parking and is open from 7am to 5pm or 7am to 7pm during daylight savings. For further information phone 02 4904 3344.



## Richley Reserve (Car Park) to Richley Reserve (Ponds end) 0.1km 3 mins

(From S) From the Richley Reserve Car Park (Freybery St, New Lambton), this walk follows the 'Tall Tree Ridge Walk' sign and sealed trail gently uphill, while keeping the sheltered picnic table and large pond on your left. This walk continues through forest, with a pond on your left, for about 140m until coming to a four-way intersection, with a timber post with chain attached (on the right) and another large pond (on your left and ahead).



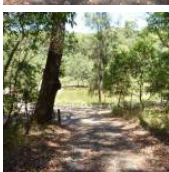
## Richley Reserve (Ponds end) to Int of Forest Way AND Tall Trees Walks 0.3km 5 mins

(From 0.14 km) Turn right: From the intersection, this walk follows the sealed trail gently uphill, while initially keeping the timber post with chain attached on your right and keeping the large pond directly behind. This walk continues through attractive forest (ignoring side tracks) for about 300m, until coming to a level T-intersection, with a 'Richley Carpark' sign directly ahead.



## Int of Forest Way & Tall Trees Walks to Tall Trees Walk & Lookout Road Trails 0.6km 10 mins

(From 0.48 km) Veer left: From the intersection, this walk follows the 'Tall Trees Walk to Carnley Ave Carpark' sign and sealed trail gently uphill. This walk continues through forest for about 300m until coming to a three-way intersection, with a 'Tall Tree Ridge Walk' sign directly ahead.



Continue straight: From the intersection, this walk follows the 'Tall Tree Ridge Walk' sign and sealed trail gently downhill, while keeping the valley on the left. This walk continues, undulating through thick forest for about 290m until coming to a three-way intersection, with a 'Tall Trees Walk to Richley Carpark' sign directly ahead.

## Main Ridge & Lookout Road Trails to Int of Main Ridge & Tall Trees Walks 0.4km 5 mins

(From 1.08 km) Turn left: From the intersection, this walk follows the 'Tall Trees Walk to Carnley Ave Carpark' sign gently downhill, while keeping the valley on your right. This walk continues, undulating through forest for about 400m until coming to a level three-way intersection, with a 'Tall Trees Walk to Richley Carpark' sign (on the left) and a sealed trail (on the right).



**Int of Main Ridge & Tall Trees Walks to Int of Carnley & Tall Trees Trails** 0.7km 10 mins

(From 1.43 km) Continue straight: From the intersection, this walk follows the 'Main Ridge Walk to Carnley Ave Carpark' sign and sealed trail gently uphill, while keeping the sealed gently downhill trail on your right. This walk continues through forest on a ridge for about 70m, to find an open gravel area (on the left). Then this walk continues straight ahead, undulating for about 600m, until coming to a four-way intersection, with a 'Main Ridge Walk (loop)' sign (on the left).



**Int of Main Ridge & Tall Trees Walks to Richley Reserve (Short Cut Intersection)** 0.2km 4 mins

(From 2.14 km) Turn left : From the intersection, this walk passes around a metal post and follows the 'Richley Carpark 400m' sign and sealed footpath gently downhill, while leaving the bench seat directly behind. This walk continues through forest for about 140m, to pass around a metal post and find a large grassy picnic area. Then this walk continues straight ahead over grass and through some trees for about 70m, until coming to a sealed trail (with the valley beyond).



**Richley Reserve (Short Cut Intersection) to Richley Reserve (Car Park)** 0.3km 5 mins **Alternative Exit:**

(From 2.34 km) Turn right: From the trail below the large elevated grassed picnic area, this walk follows the trail gently downhill, while keeping the valley on your left. This walk continues through grassed parkland for about 120m, until coming to a three-way intersection with a sealed trail and a 'Tall Tree Walk (loop)' sign (on the right).

Turn left: From the intersection, this walk follows the sealed trail gently downhill, keeping the 'Tall Tree Walk (loop)' sign directly behind you while walking towards the road and car park. This walk continues for about 45m, passing through a metal gate to find a three-way intersection, with a road on the right and the car park on the left. Then this walk turns left and follows the car park gently uphill for about 150m, until coming to a 'Tall Tree Ridge Walk' sign and sheltered picnic tables ahead.(End of the alternative exit track)



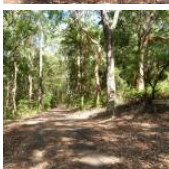
**Richley Reserve (Short Cut Intersection) to Richley Reserve (Four Way Intersection)** 0.3km 5 mins

(From 2.34 km) Turn left: From the trail below the large elevated grassed picnic area, this walk follows the gently downhill trail west, while keeping the valley on your right. This walk continues for about 120m to find a sheltered picnic area (on the right). Then this walk continues straight ahead and gently uphill for about 160m, becoming gently downhill and passing timber steps (on the left) and a toilet block (on the right), until coming to a four-way intersection, with a playground on the right and a timber footbridge directly ahead.



**Richley Reseve (four way intersection) to Richley Reserve (car park)** 0.2km 3 mins

(From 2.59 km) Turn right: From the intersection, this walk follows the footpath gently downhill, while initially keeping the timber footbridge on your left. This walk continues for about 180m, beside a pond (on your left), until coming to a car park with a sheltered picnic table and 'Tall Tree Ridge Walk' sign (on the left).

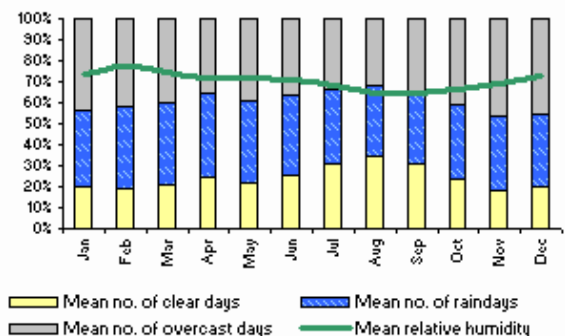
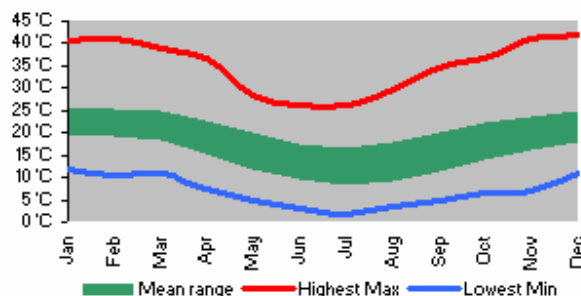


**A list of paper topographical maps that cover this walk**

- [Wallsend](#) 1:25 000 Map Series
- Newcastle 1:100 000 Map Series

**Nearby outdoor and camping stores**

- Kathmandu** 6 Northcott Drv Kotara (02) 4952 1233
- Aussie Disposal Newcastle** 4/ 14 Northcott Drv Kotara (02) 4965 5500
- Boots Great Outdoors** 27 Lambton Rd Broadmeadow (02) 4969 4655
- Wallsend Army Disposal Store** Cnr Tyrrell & Council Sts Wallsend (02) 4951 5725
- Mountain Designs** Cnr King & National Park Sts Newcastle West (02) 4962 3311



This space is available for advertising



Full colour  
Great photos



Give the joy of walking to a friend  
(and support wildwalks)

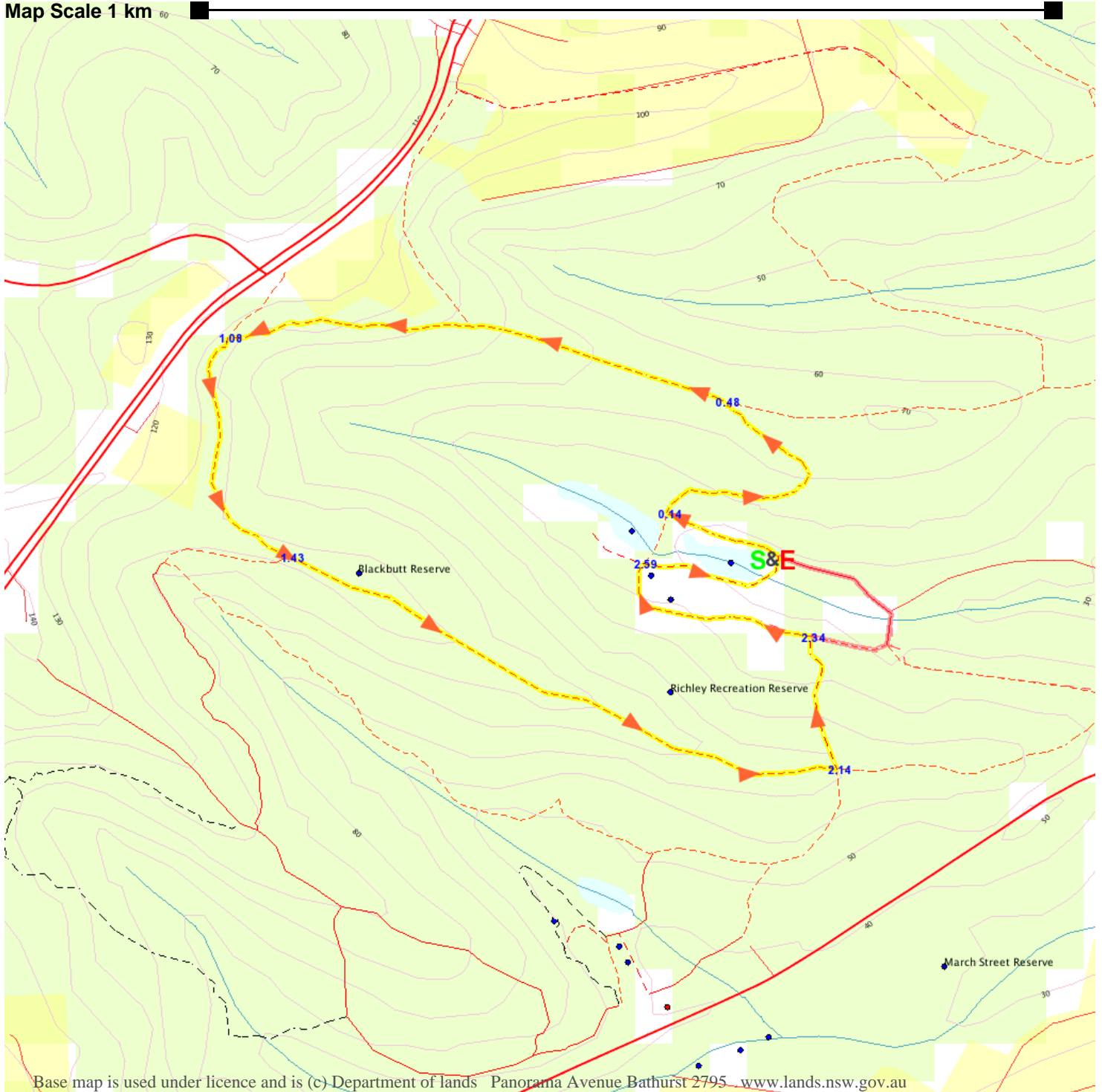
[www.wildwalks.com/books.html](http://www.wildwalks.com/books.html)



A walk for every body



Map Scale 1 km



Base map is used under licence and is (c) Department of lands Panorama Avenue Bathurst 2795 [www.lands.nsw.gov.au](http://www.lands.nsw.gov.au)

