



Starting from Vaucluse Rd, you will head down past the stately Strickland House to the small but lovely Milk Beach on Sydney Harbour. There are several interesting buildings in the Strickland House complex as well as some interesting open exotic gardens to explore. From behind Strickland House, you will then turn right and head along a short section of the Hermitage Foreshore Walk down to Milk Beach, where you will find more great harbour and city views.

Length: 0.7 km
Time: 25 mins
Climb: 31 m
Style: Return
Rating: Walk: Easy
Where: 1.9 km NW of Vaucluse
Transport: bus car



Sydney Harbour National Park

Visit www.wildwalks.com for more info



Side trips and Alternate routes mentioned in these notes are not included in the tracks overall rating, distance or time estimate. The notes only describe the side trips and Alternate routes in one direction. Allow extra time for resting and exploring areas of interest. Please ensure you and your group are well prepared and equipped for all possible hazards and delays. The authors, staff and owners of wildwalks take care in preparing these notes but will not accept responsibility for any inconvenience, loss or injury sustained by using these notes or maps. Please take care and share your experience through the website. Please check park closures, weather information and Fire Danger Rating just before leaving for your walk. Walk maybe closed during Total Fire Ban. GPS for start and end of this walk: -33.8551,151.2686



Wildwalks

Download the free [Bushwalk Australia eMag](http://bushwalk.com)

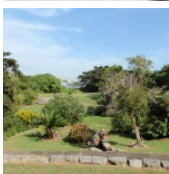
The eMagazine is produced by the community at bushwalk.com and the Wildwalks team
[Bushwalk.com](http://bushwalk.com) Australia's most active bushwalking forum - Check it out.

Happy Reading. Matt :)



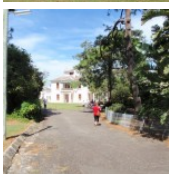
Top of Strickland House Driveway to Strickland House 0.2km 3 mins

(From S) From beside Vaucluse Rd (number 52), this walk heads through the gates (only open 9-5 daily[ref_img=254849]) and follows the Strickland House driveway downhill. The driveway soon leads past a caretaker's cottage (on your left) and then bends left. This walk ignores the side tracks, soon coming to the front of the main grand, white Strickland House building.



Strickland House

First established in 1913 and named after Sir Gerald Strickland (Governor of NSW 1913-1917), Strickland House was a women's convalescent home until 1989. Today, the house and gardens are hired out for private functions, however, if just walking through, this is a great spot to take a break, enjoy the views and rest from the walk. For more information, phone Strickland House on (02) 9337 5999.



Strickland House to Strickland House picnic area 0.1km 2 mins

(From 0.16 km) Turn right: From the front of Strickland House, this walk heads around the back of the house towards the water view, keeping the house to your left. After enjoying the building, this walk heads across the back lawn to the line of trees, where there are a few picnic tables and an intersection with the Hermitage Foreshore Walk.



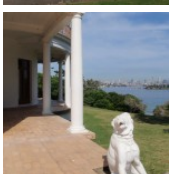
Strickland House picnic area to Milk Beach 0.1km 2 mins

(From 0.26 km) Turn right: From Strickland House picnic area, this walk follows the NPWS arrow through a small grove of trees (keeping the water to your left). The track soon leads down some stairs, then turns left to find a bench seat and a large 'Hermitage Foreshore Walk' sign behind Milk Beach. From here, the walk heads down the hill and onto Milk Beach.



Milk Beach

Milk Beach is a small, secluded, sandy beach in Sydney Harbour National Park, on the inside of South Head. In the 'back yard' of Strickland House, this beach is a memorable spot along the Hermitage Foreshore Walk. The beach is about 50m wide and faces south-east. The views across the water to the city and to Shark Island are great. A seat on the grassy clearing behind the beach makes a very inviting offer to sit and enjoy for a while. This is also a great place to get the toes wet.



This is a 'Return' style walk - retrace your steps back to the beginning when you are ready.

This space is available for advertising



Full colour
Great photos



Give the joy of walking to a friend
(and support wildwalks)

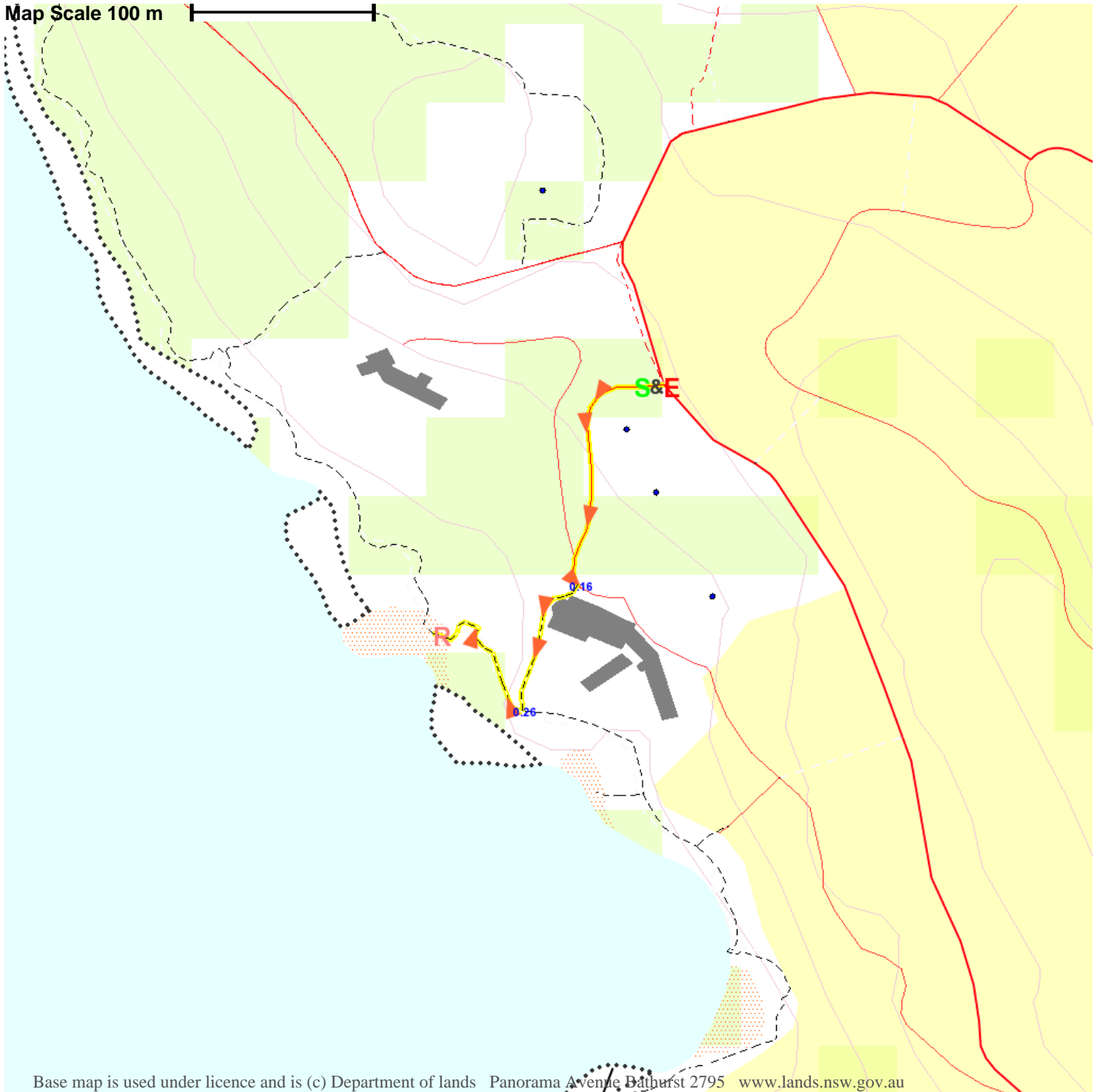
www.wildwalks.com/books.html



A walk for every body



Map Scale 100 m



Base map is used under licence and is (c) Department of lands Panorama Avenue Bathurst 2795 www.lands.nsw.gov.au

