



This walk explores the tip of Sydney Harbour's South Head. On this walk, you will visit several historic and scenic places, following a footpath most of the way. You will start at Camp Cove, the first landing place for Europeans in Australia, and also visit a number of gun emplacements, designed to protect the shores from the threat of invasion. Also enjoy the panoramic ocean and harbour views from the cliff line at Hornby Lighthouse. A wonderful walk for those wanting to explore wide open views and get a glimpse of history.

**Length:** 1.7 km  
**Time:** 45 mins  
**Climb:** 64 m  
**Style:** Circuit  
**Rating:** Walk: Easy  
**Where:** 1.2 km NNW of Watsons Bay  
**Transport:** bus car



Visit [www.wildwalks.com](http://www.wildwalks.com) for more info

## Sydney Harbour National Park

*Side trips and Alternate routes mentioned in these notes are not included in the tracks overall rating, distance or time estimate. The notes only describe the side trips and Alternate routes in one direction. Allow extra time for resting and exploring areas of interest. Please ensure you and your group are well prepared and equipped for all possible hazards and delays. The authors, staff and owners of wildwalks take care in preparing these notes but will not accept responsibility for any inconvenience, loss or injury sustained by using these notes or maps. Please take care and share your experience through the website. Please check park closures, weather information and Fire Danger Rating just before leaving for your walk. Walk maybe closed during Total Fire Ban. GPS for start and end of this walk:-33.8394,151.28*



## Wildwalks



Download the free [Bushwalk Australia eMag](http://bushwalk.com.au)

The eMagazine is produced by the community at [bushwalk.com](http://bushwalk.com) and the Wildwalks team

[bushwalk.com](http://bushwalk.com) Australia's most active bushwalking forum - Check it out.

Happy Reading. Matt :)

### Camp Cove car park to Camp Cove Beach 0.1km 1 mins

(From S) From the signposted 'Camp Cove Car Park', this walk follows the 'No Through Road' sign to the end of 'Cliff St'. The footpath leads past a 'Camp Cove timeline' information sign then, at the end of the road, turns left, coming to the front of the kiosk at the northern end of Camp Cove Beach.

### Camp Cove

Camp Cove is home to a lovely, yellow sand, north-east facing beach. The cove is on the protected side of South Head and is a popular spot for swimming and relaxing on the beach. At the northern end of the beach is a kiosk, toilet block and an entrance to Sydney Harbour National Park.

The cove was an important location to the Cadigal (Gadigal) people who gathered fresh water, shellfish, launched their canoes and buried some of their people nearby.

This cove is also believed to be the first landing place for Europeans in 1788. The name Camp Cove was given during that landing and appears on the earliest maps of Sydney Harbour.

### Camp Cove Beach to Cannon 0.1km 3 mins

(From 0.05 km) Veer right: From the front of Camp Cove Beach kiosk, this walk crosses the beach (keeping the water to your left) and climbs up the timber staircase. From the intersection at the top of the stairs, this walk continues straight, along the timber boardwalk that soon turns into a concrete path. The path soon comes to a wide, cobbled sandstone path that leads up a disused cannon, gun emplacement and great harbour views.

### Cannon

This cannon was placed here prior to 1890, along with the rest of this gun emplacement and rifle walls. The emplacement was designed to protect a military jetty and boat shed from the threat of an invasion. The 'Cobblestone Road' beside the cannon was built during the late 1870s or early 1880s and extends from the jetty in Camp Cove up to Hornby Road above. The road was built to carry supplies and ordnance from Camp Cove to the various military installations on south head. [More info](#)

### Cannon to Lady Bay Beach Int 0.3km 5 mins

(From 0.18 km) Continue straight: From the cannon, this walk heads up the path and steps and soon turns left to follow the old road. The walk follows the old road, enjoying sweeping harbour views (to your left). About 170m along this road (as it bends right), it passes a toilet block then finds some garbage bins at the end of the road. Here, the walk heads along the narrower footpath for ~60m until coming to the signposted intersection above 'Lady Bay Beach'.

### Lady Bay Beach Int to Lady Bay Beach 0km 1 mins **Optional Side Trip:**

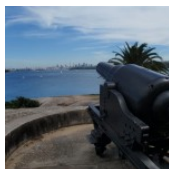
(From 0.47 km) Turn left : From the intersection, the walk follows the 'Lady Bay Beach' sign down the steps as they wind to the sandy beach below.

(Retrace your steps back to the main track, then turn left to continue along this walk.)



## Lady Bay Beach

Lady Bay Beach is an official nudist beach found on the inside of South Head. Facing west, this beach is surrounded by a long cliff and a rocky shoreline. There are great views across the water to Middle Head. Officially declared a nude bathing beach by Neville Wran in 1976, nudity is only permitted on the beach and water. The beach is also known as 'Lady Jane Beach'. You are welcome to use the beach clothed or unclad. [More info](#)



## Lady Bay Beach Int to Lady Bay Lookout 0.1km 2 mins

(From 0.47 km) Continue straight: From the intersection, this walk heads gently downhill along the main path, keeping the large fence to your right. The path leads down a few steps and after  $\approx 80\text{m}$ , heads up a few steps then some more steps through a cleft in the rock to find the fenced timber lookout platform looking over Lady Bay.

## Lady Bay Lookout

Some may find it strange having a lookout platform overlooking a nudist beach, but the harbour and city views are great. This fenced and timber-decked lookout platform is found on the main walking track at the northern end of the bay. The lookout's main view is south-west along the beach and harbour towards North Sydney. There are a few trees growing up over the view, which adds further interest to the outlook.



## Lady Bay Lookout to Circuit intersection 0.1km 1 mins

(From 0.56 km) Continue straight: From Lady Bay Lookout, this walk heads up the steps and follows the timber boardwalk a short distance until coming to a four-way intersection next to the large 'South Head Heritage Trail' sign.

## Circuit intersection to Lightkeepers Cottage 0.2km 3 mins

(From 0.62 km) Veer left: From the intersection, this walk heads along the short section of timber boardwalk, past the 'South Head Heritage Trail' sign, keeping the filtered water views to your left. The walk then follows the flat footpath through the heath and after  $\approx 70\text{m}$ , the path leads to a large clearing with great views across the water. The walk continues along this path, bending to the right in front of the old Lightkeeper's cottage and find a 'Lightkeeper's Cottages 1858' sign between the old house and a gun emplacement.



## A list of paper topographical maps that cover this walk

[Sydney Heads](#) 1:25 000 Map Series

Sydney 1:100 000 Map Series



## Nearby outdoor and camping stores

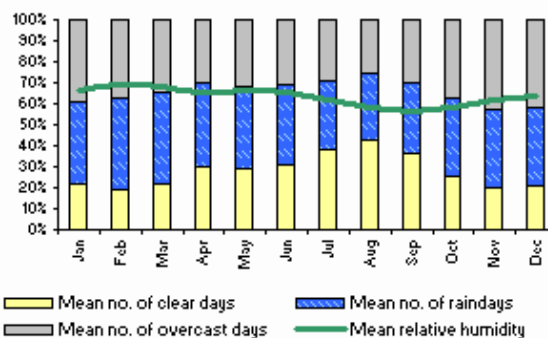
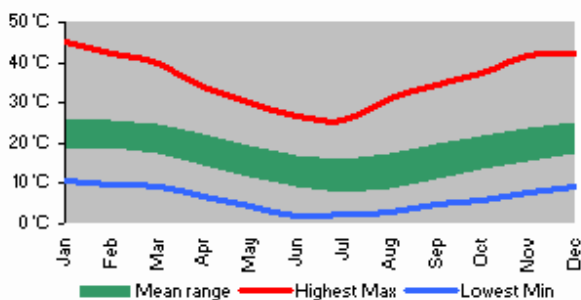
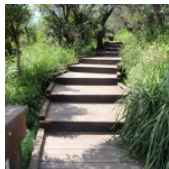
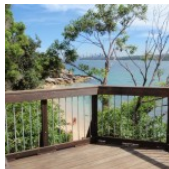
**Outdoor Equipment** 60 Spring St Bondi Junction (02) 9389 8122

**Kellys Camping & Outdoors** 826 Pittwater Rd Dee Why (02) 9972 0061

**Inski** 46 York St Sydney (02) 9233 3200

**Mitchells Adventure** 81 York St Sydney (02) 9299 6321

**Venus Repair Workshop** Suite 36a 104 Bathurst St Sydney (02) 9267 0706



This space is available for advertising



Full colour  
Great photos



Give the joy of walking to a friend  
(and support wildwalks)

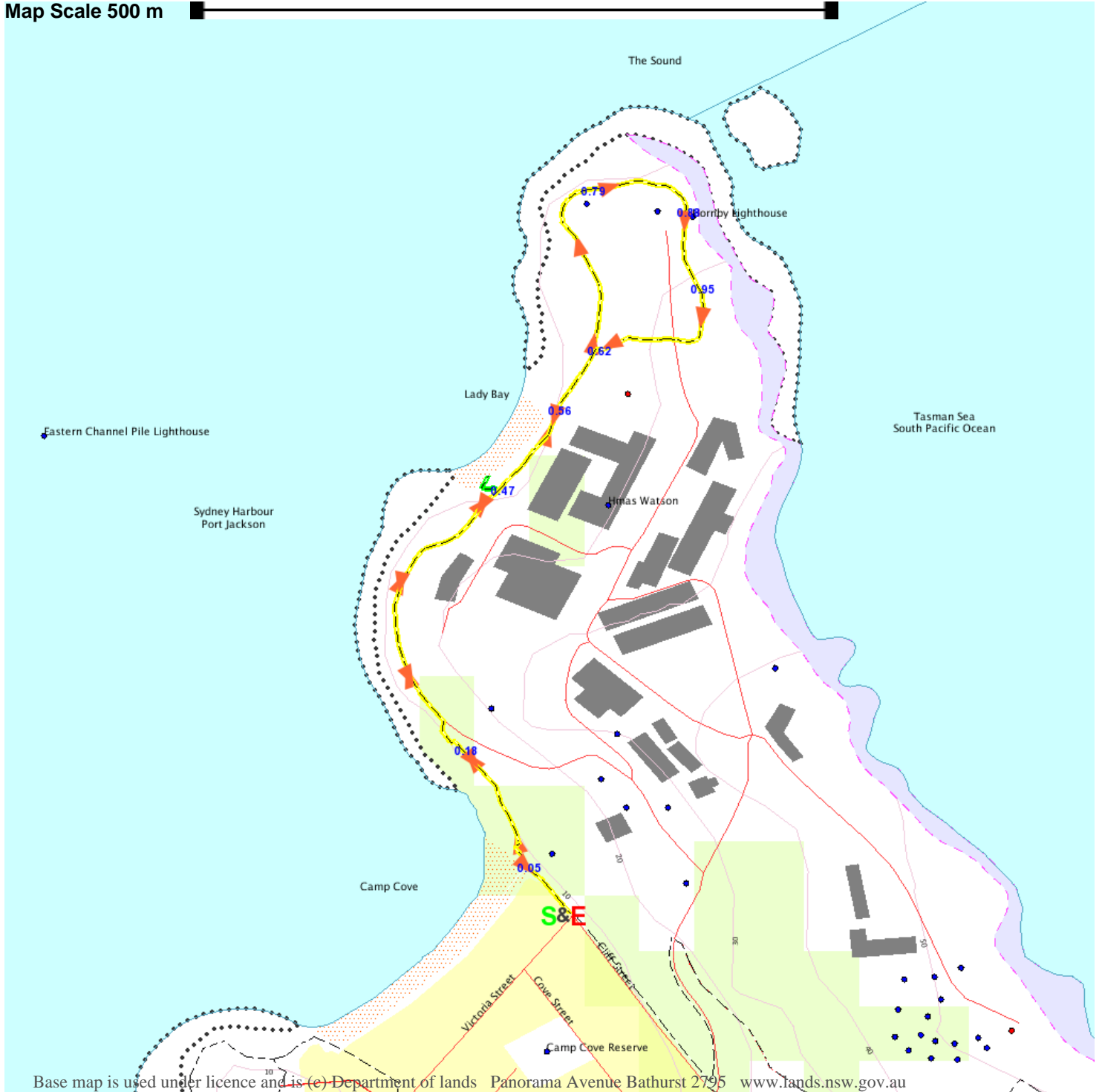
[www.wildwalks.com/books.html](http://www.wildwalks.com/books.html)



A walk for every body



Map Scale 500 m



Base map is used under licence and is (c) Department of lands Panorama Avenue Bathurst 2795 [www.lands.nsw.gov.au](http://www.lands.nsw.gov.au)

