



This short walk takes you from the Katandra Rd Picnic Area to Seymour Pond. The pond was made to support a farm that was once in the area, and now the pond support many water birds. There is a simple picnic area and plenty of shady spots at the pond, making a nice place to sit and enjoy the birds. These notes also describe two side trips to some other interesting spots near the pond.

Katandra Reserve

**Length:** 0.9 km  
**Time:** 30 mins  
**Climb:** 45 m  
**Style:** Return  
**Rating:** Walk: Easy  
**Where:** 2.5 km SW of Holgate  
**Transport:** bus car



Visit [www.wildwalks.com](http://www.wildwalks.com) for more info



*Side trips and Alternate routes mentioned in these notes are not included in the tracks overall rating, distance or time estimate. The notes only describe the side trips and Alternate routes in one direction. Allow extra time for resting and exploring areas of interest. Please ensure you and your group are well prepared and equipped for all possible hazards and delays. The authors, staff and owners of wildwalks take care in preparing these notes but will not accept responsibility for any inconvenience, loss or injury sustained by using these notes or maps. Please take care and share your experience through the website. Please check park closures, weather information and Fire Danger Rating just before leaving for your walk. Walk maybe closed during Total Fire Ban. GPS for start and end of this walk: -33.4146,151.396*



### Wildwalks

Download the free [Bushwalk Australia eMag](http://Bushwalk Australia eMag)

The eMagazine is produced by the community at [bushwalk.com](http://bushwalk.com) and the Wildwalks team  
[Bushwalk.com](http://Bushwalk.com) Australia's most active bushwalking forum - Check it out.

Happy Reading. Matt :)



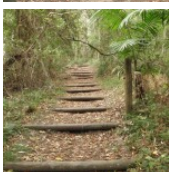
### Katandra Rd Picnic Area

The Katandra Road Picnic Area is found at the end of a short driveway (signposted at the intersection of Katandra Rd and Croton Ave, Holgate). The picnic area is in front of the ranger's residence and is open from 7am to 6pm daily. The picnic area provides some toilets, garbage bins, two picnic tables, parking and an information sign.



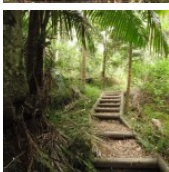
### Katandra Rd picnic area to Int of Waterman walk and Katandra Rd track 0.1km 3 mins

(From S) From the picnic area, this walk follows the 'Seymour Pond' and 'Waterman Walk' signs north-east along the clear track. The track soon heads down a series of steps and, shortly after turning right (at a locked gate), this walk comes to a three-way intersection marked with two blue/white arrows on a post.



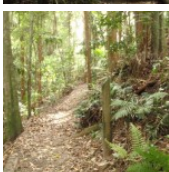
### Int of Waterman walk and Katandra Rd track to Seymour Pond Picnic area 0.3km 5 mins

(From 0.14 km) Turn left: From the intersection, this walk follows the upper arrow down the hill, keeping the fence and house to the right. The track heads down the hill then steps down into a palm-filled valley. Here, the walk climbs some steps and passes the 'Commemorating 10 years of bushcaring in Katandra Reserve' plaque, then bends right and around a sharp left-hand bend and past the number '5' post (and old Wombat Hole). The track continues around the gully to cross a few small bridges and come to a picnic area and a 'Seymour Pond' sign.



### Seymour Pond

Seymour Pond is medium-sized water body in Katandra Reserve. The pond is fed by a spring coming from the cliffs at the top of the reserve. The small creek was dammed in the early 1900's to provide water for a farm on the south side (growing vegetables). The pond is home to water birds, large lizards and other wildlife. The council does not allow swimming in the pond, helping to maintain the ecosystem that now relies on this pond. There are a few spots beside the pond where you can enjoy the cool climate and the visiting birds.



### Seymour Pond Picnic Area

The Seymour Pond Picnic Area is found on the dam wall at the eastern end of Seymour Pond in Katandra Reserve. The picnic area provides a couple of picnic tables and a garbage bin. The picnic area is set in a lovely naturally shaded area in view of the Seymour Pond and beside Watermans and Toomeys walks.



### Seymour Pond Picnic area to Strangler Fig Tube 0.1km 2 mins **Optional Side Trip:**

(From 0.45 km) Veer right: From the picnic area, this walk heads across the dam wall, keeping the water on the left while passing the two picnic tables. The walk then crosses a timber bridge and comes to a signposted three-way intersection with 'Toomey' and 'Waterman' walks.

Continue straight: From the intersection, this walk follows the 'Toomey Walk' sign along the boardwalk, away from the pond. Soon the walk follows the track along the gully then follows the timber steps as they bend right and head up to the number '4' post, next to the Strangler Fig tube.



### Strangler Fig Tube

This Strangler Fig Tube is found beside Toomey Walk, just north of Seymour Pond. The scientific name of the tree is *Ficus obliqua* and it is listed on the Significant Tree Register. This Small-leaved Fig has grown around a large fallen log. The log has long-since rotted away, leaving a knotted tubular structure. Strangler Figs often grow from seeds dropped by birds. The seeds may fall on logs or rocks and the roots will make their way to the ground (to provided water, nutrients and a firm anchor), whilst the rest of the tree grows upwards for light. [More info](#)



### Seymour Pond Picnic area to Waterman View 0.1km 2 mins **Optional Side Trip:**

(From 0.45 km) Veer left: From the picnic tables, this walk heads past the 'Seymour Pond' sign (following the right-hand 'Waterman walk' arrow) and follows the track, keeping the pond close by on the right. The track soon leads to a viewing platform with long bench seats - Waterman view.



### Waterman View

Waterman view (informally named) is a viewing point at the western end of Seymour Pond. The platform has a couple of long bench seats. A timber platform on the water's edge means that visitors can get right up near the water. Signs here remind visitors that swimming is not allowed. This is a great spot to enjoy the birds and other life around the pond.

This is a 'Return' style walk - retrace your steps back to the beginning when you are ready.

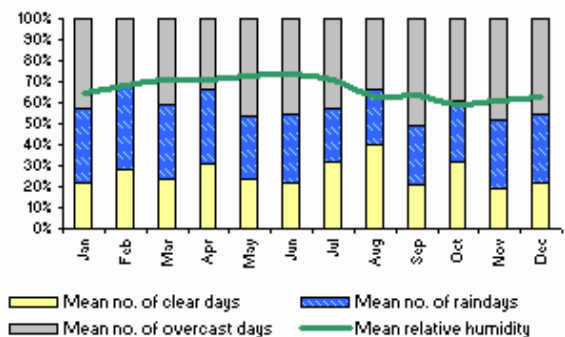
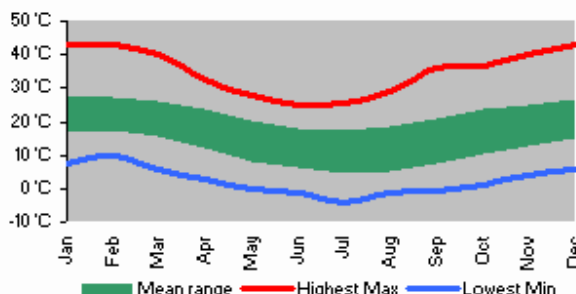
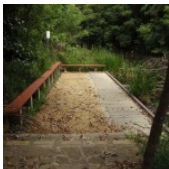
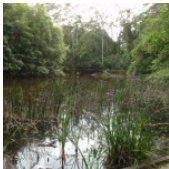


### A list of paper topographical maps that cover this walk

- [Gosford](#) 1:25 000 Map Series
- Gosford 1:100 000 Map Series

### Nearby outdoor and camping stores

- Boots Great Outdoors** 201 The Entrance Rd Erina (02) 4367 0396
- Camping World Shop** 18, 482 Pacific Hwy Wyoming (02) 4324 6515
- BCF Australia Pty Ltd** 354 Manns Rd Gosford West (02) 4322 5833
- Mannings Sports** 172 Mann St Gosford (02) 4325 1617
- Kangaroo Tent City & BBQs** Homemakers Supa Centre Cnr Wyong Rd & Bryant Drv Tuggerah (02) 4353 4335



This space is available for advertising



Full colour  
Great photos



Give the joy of walking to a friend  
(and support wildwalks)

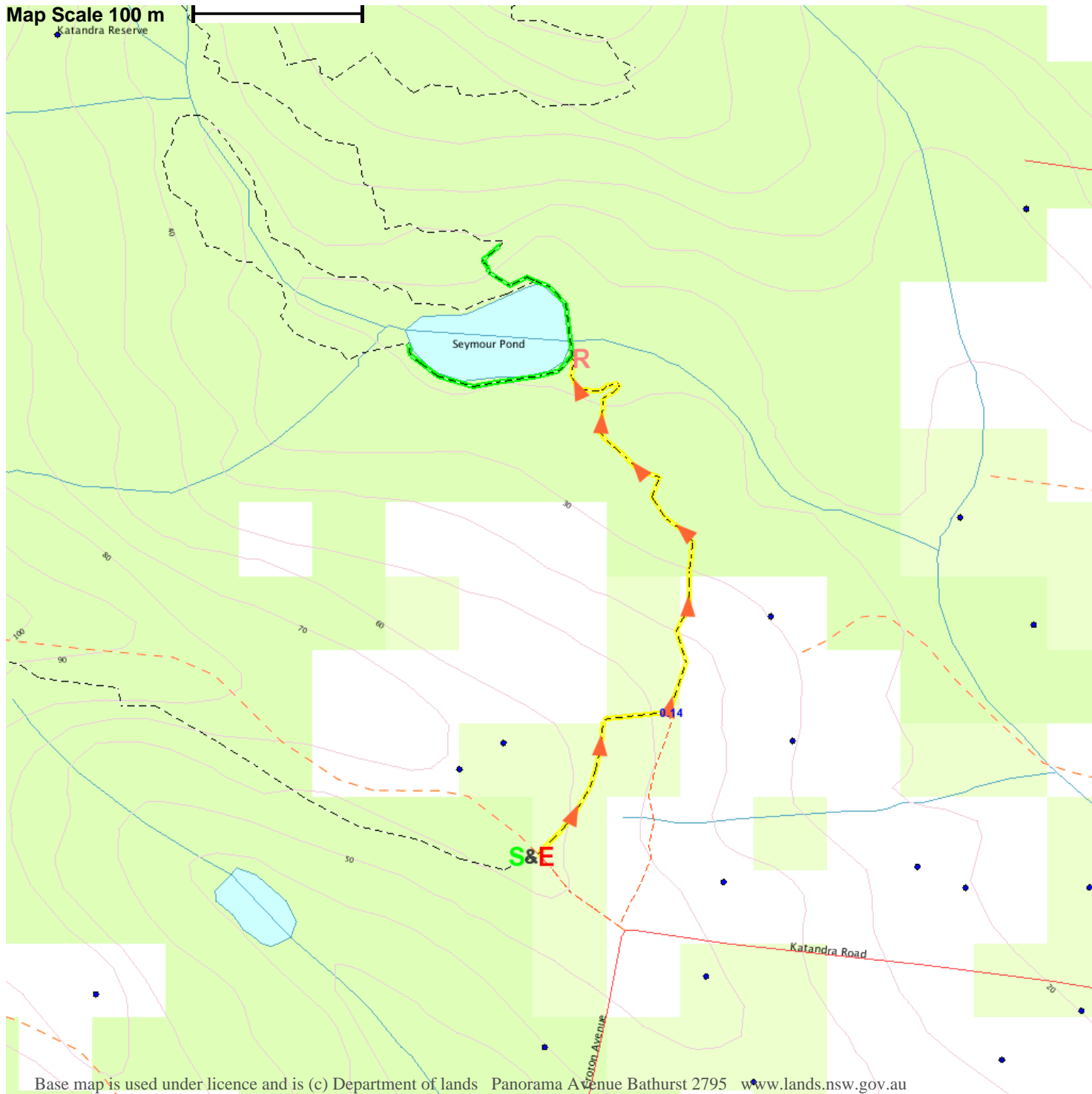
[www.wildwalks.com/books.html](http://www.wildwalks.com/books.html)



A walk for every body



Map Scale 100 m



Base map is used under licence and is (c) Department of lands Panorama Avenue Bathurst 2795 [www.lands.nsw.gov.au](http://www.lands.nsw.gov.au)

