



The track to the historic Scotts Hut is a great walk along the shores of Wallagoot Lake and Scotts Bay. The walk is well signposted as it leads into the open grass area of Scotts Hut picnic area. The hut itself is well worth an explore and a peek through the windows of this once pioneer home.

Bournda National Park

**Length:** 3.6 km  
**Time:** 1 hr 15 mins  
**Climb:** 6 m  
**Style:** Return  
**Rating:** Walk: Easy  
**Where:** 7.5 km SSW of Tathra  
**Transport:** car



Visit [www.wildwalks.com](http://www.wildwalks.com) for more info



*Side trips and Alternate routes mentioned in these notes are not included in the tracks overall rating, distance or time estimate. The notes only describe the side trips and Alternate routes in one direction. Allow extra time for resting and exploring areas of interest. Please ensure you and your group are well prepared and equipped for all possible hazards and delays. The authors, staff and owners of wildwalks take care in preparing these notes but will not accept responsibility for any inconvenience, loss or injury sustained by using these notes or maps. Please take care and share your experience through the website. Please check park closures, weather information and Fire Danger Rating just before leaving for your walk. Walk maybe closed during Total Fire Ban. GPS for start and end of this walk: -36.797,149.94*



### Wildwalks

Download the free [Bushwalk Australia eMag](http://bushwalk.com)

The eMagazine is produced by the community at [bushwalk.com](http://bushwalk.com) and the Wildwalks team

[Bushwalk.com](http://bushwalk.com) Australia's most active bushwalking forum - Check it out.

Happy Reading. Matt :)



### Hobart Beach campground

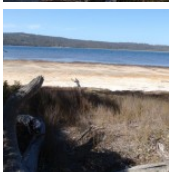
This is a well-established campsite close to the beach and lake. There are garbage and recycling bins. Each camping space is well-defined and there is a large covered common area. The camp surrounds the stone and timber toilet and laundry facility.



### Hobart Beach large shelter to Int. Hobart Lagoon and Hobart Campground Trks 0.4km 5 mins

(From S) From the sign post at the large shelter, the walk follows the dirt road, leaving the shelter behind on the left. The walk follows the road for a short distance to come to a large, green roofed, wooden building, the toilet block.

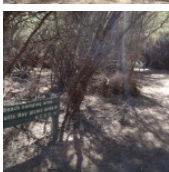
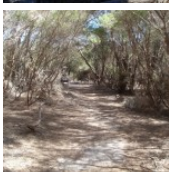
Continue straight: From the toilet block, this walk heads west along the dirt road further into the campground. At the 'Sites 36-54' the walk turns right following the 'one way' arrow towards the lake. As the road bends left, follow the track down the hill to the lake to soon come to a three way intersection next to Wallagoot Lake. Here there is a sign pointing back to 'Hobart Beach Camping Area'.



### Wallagoot Lake (Lagoon)

Wallagoot Lake, Bournda National Park, is located between Tathra and Merimbula on the Sapphire Coast Drive. Wallagoot Lake is a large expanse of water, although it is only two to three metres deep. The lake's catchment is found predominantly within Bournda National Park, the main tributary being Moncks Creek. The lake is blocked from the ocean by sand dunes on the eastern end - these dunes are broken intermittently, connecting the lake with the sea. Wallagoot Lake is home to many bird species including Black Swans and a threatened Tern.

The lake is a popular spot for picnics and other recreation. Hobart Beach camping area lies on the southern shore of the lake, and on the northern edge lies the Wallagoot Lake Boat Club, with its parking, and also a picnic area, providing plenty of opportunities to enjoy the lake. Wallagoot Lake can be accessed by Wallagoot Lake Rd off the Sapphire Coast Drive. [More info](#)



### Int. Hobart Lagoon and Hobart Campground Trks to Int. Scotts Hut Picnic Area 1.3km 10 mins

(From 0.41 km) Turn left: From the intersection, this walk keeps Wallagoot Lake to the right and follows the shoreline. The track continues behind the shoreline and soon tends left away from the views of the lake. The track heads through the heath for a short time to an intersection with two signposts, one of which points back to 'Hobart Beach camping area via Wallagoot Lake'.

Continue straight: From the intersection, the walk follows the 'Scotts Bay picnic area' sign, with Wallagoot Lake off to the right. The track continues to an intersection on the left and two signposts, one of which points back towards 'Hobart Beach camping area'

Continue straight: From the intersection, this walk follows the 'Scotts Bay picnic area' sign down the path bordered by heath vegetation. The track winds slightly for a short time until arriving at the clearing and picnic facilities.





### Scotts Bay picnic area

Scotts Bay picnic area, Bournda National Park, is situated on the southern banks of Wallagoot Lake, at Scotts Bay. The picnic area has a large grassed area with a few shady areas closer to the water. An electric BBQ plate, toilets and picnic tables are scattered in the shade. The picnic area surrounds the historic Scotts Hut building. The facilities can be accessed from Bournda Rd.



### Int. Scotts Hut Picnic Area to Scotts Hut 0.1km 2 mins

(From 1.69 km) Veer left: From the intersection behind the picnic area, the walk heads across the grass and the road. The walk then passes through the gate to explore Scotts hut and its garden.

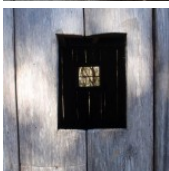


### Scotts Hut

Scotts Hut is situated on the south-western banks of Wallagoot Lake, halfway between Merimbula and Tathra, in Bournda National Park. The reconstructed hut (completed in 1988) was built in a slab cottage style. This cottage has a corrugated iron roof, and wooden walls and floorings. The cottage has been fitted with gutters which feed a water tank at the southern end of the hut. The hut has an open fireplace and its interiors are painted white.

The builder of the hut was Thomas Scott, originally a resident of Cooma and a father of twelve, to two wives. The hut is thought to have been built in 1890 on one of many pieces of land Mr Scott owned around the Wallagoot Lake.

The hut can be accessed via the Sapphire Highway and Bournda Rd. Surrounding the hut is a picnic area and adjacent, Hobart Beach. [More info](#)

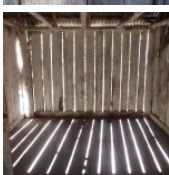


This is a 'Return' style walk - retrace your steps back to the beginning when you are ready.

### A list of paper topographical maps that cover this walk

[Wolumla](#) 1:25 000 Map Series

Bega 1:100 000 Map Series



### Nearby outdoor and camping stores

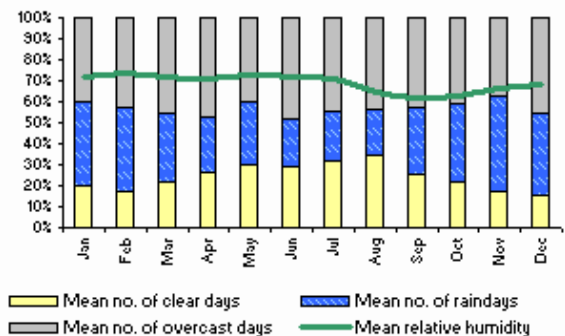
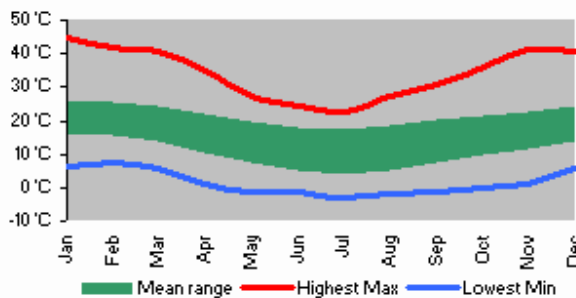
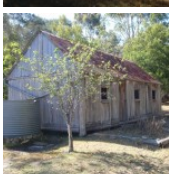
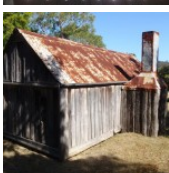
**Camping Plus** 6 Alice St Merimbula (02) 6495 2571

**Gas Connection The** Arthur Kaine Drv Pambula (02) 6495 7121

**Barbeques Galore (Bega)** 274 Carp St Bega (02) 6492 4054

**Camping Outdoors Centre** 43 Vulcan St Moruya (02) 4474 3081

**Gone Fishin** Cnr Ford & Queen Sts Moruya (02) 4474 4381



This space is available for advertising



Full colour  
Great photos



Give the joy of walking to a friend  
(and support wildwalks)

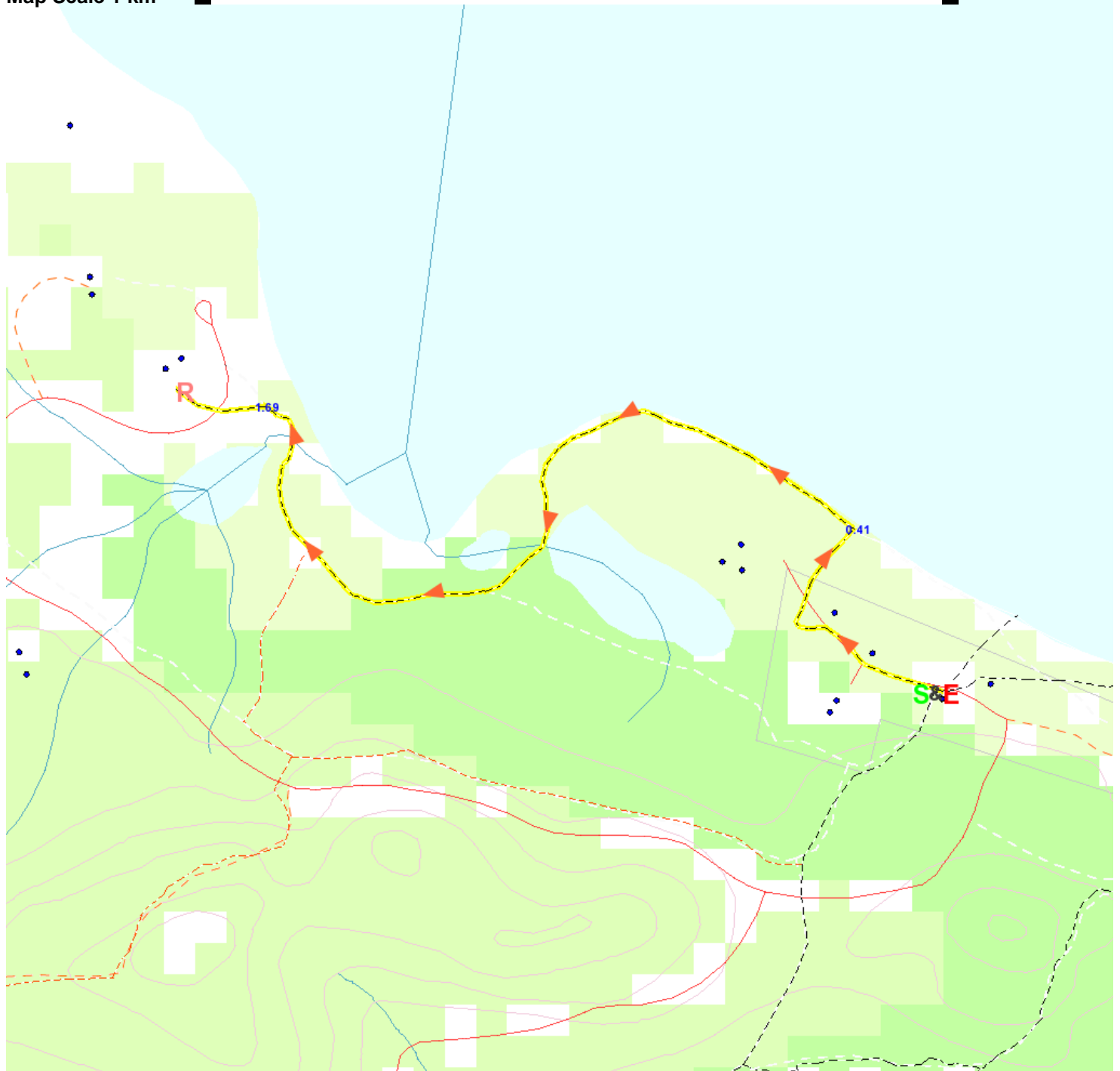
[www.wildwalks.com/books.html](http://www.wildwalks.com/books.html)



A walk for every body



Map Scale 1 km



Base map is used under licence and is (c) Department of lands Panorama Avenue Bathurst 2795 [www.lands.nsw.gov.au](http://www.lands.nsw.gov.au)

