

Rod Earp Rainforest Circuit (from Carnley Ave)



This walk takes the walker into a dense cool rainforest that seems a world away from the hustle and bustle of Newcastle city. You're likely to see flying foxes in the trees and, if you're lucky, a Powerful Owl. Starting and finishing at the Carnley Ave Reserve, this walk can easily be combined with a visit to the Wildlife Exhibits and/or a picnic at Carnley Ave Reserve. A recommended walk.

Length: 2 km
Time: 1 Hr
Climb: 99 m
Style: Circuit
Rating: Track: Moderate
Where: 2.6 km WSW of Adamstown
Transport: bus car



Visit www.wildwalks.com for more info



Side trips and Alternate routes mentioned in these notes are not included in the tracks overall rating, distance or time estimate. The notes only describe the side trips and Alternate routes in one direction. Allow extra time for resting and exploring areas of interest. Please ensure you and your group are well prepared and equipped for all possible hazards and delays. The authors, staff and owners of wildwalks take care in preparing these notes but will not accept responsibility for any inconvenience, loss or injury sustained by using these notes or maps. Please take care and share your experience through the website. Please check park closures, weather information and Fire Danger Rating just before leaving for your walk. Walk maybe closed during Total Fire Ban. GPS for start and end of this walk: -32.9379,151.6981



Wildwalks

Download the free [Bushwalk Australia eMag](http://bushwalk.com)

The eMagazine is produced by the community at bushwalk.com and the Wildwalks team [Bushwalk.com](http://bushwalk.com) Australia's most active bushwalking forum - Check it out.

Happy Reading. Matt :)



Blackbutt Reserve

Blackbutt Reserve, near Newcastle, occupies over 182 hectares of land and provides visitors with the chance to enjoy nature trails, wildlife exhibits, children's playgrounds and recreational facilities. The reserve is the perfect place for a relaxing family picnic or to explore on a bushwalk. Native wildlife, such as the Powerful Owl and the Grey-headed flying fox can be seen within the park. There is an information cottage at Carnley Avenue, which is open 7am to 5pm, or 7am to 7pm during daylight savings. The reserve has car parking at Carnley Avenue, Richley Reserve, Lookout Road and Mahonoy Drive. For more information, phone 02 4904 3344.



Carnley Ave Reserve

The Carnley Avenue Reserve, within Blackbutt Reserve, is wheelchair accessible and has toilets, drinking fountains, gas/electric barbeques, sheltered picnic tables, a children's playground, fenced displays of kangaroos and emu, a large black duck pond and an information centre that is housed within a replica pioneering cottage. The information cottage has a range of souvenirs, focusing on quality and affordable products. A fee of \$4 per vehicle can be paid from the automatic machines in the car park. The information centre is open 7am to 5pm, or 7am to 7pm during daylight savings. For further information phone: 02 4904 3344.



Blackbutt Wildlife Exhibits

This boardwalk in the Blackbutt Reserve offers wildlife exhibits on an elevated timber boardwalk which is wheelchair accessible. Some of the wildlife that you are likely to encounter are kangaroos, koalas, wombats, Lace monitors, Wonga Pigeons, Red-winged Parrots, Black-winged Stilt, Buff-banded Rail, Herons, Eastern long-necked Turtle, Kingfishers, Turquoise Parrot, Banded Plover, Peaceful Dove, Cockatoos, Lorikeets, True Parrots, Major Mitchell Cockatoo, Bush Stone Curlew, Long-tailed Finch and Barking Owls. Entry is free and the exhibit is open from 9.00am to 5.00pm every day (closed Christmas Day, Good Friday and until 1pm ANZAC Day). Personal koala encounters are available at 2pm daily and cost \$3.50/person. For further information, phone: 02 4904 3344. [More info](#)



Int of Boardwalk & Main Ridge Trail to Main Ridge & Rain Forest Walks 0.4km 5 mins

(From S) From the intersection, this walk follows the sealed road gently uphill, while initially keeping the timber fenced boardwalk to the Wildlife Exhibits on your right. This walk continues through forest for about 140m until coming to a three-way intersection, with a 'Lookout Road Carpark 400m' sign (on the right).

Continue straight: From the intersection, this walk follows the 'Rainforest Walk' sign and sealed road gently downhill. This walk continues undulating for about 260m until coming to a three-way intersection, with a sealed road (on the right) and a 'Rainforest Walk to Lookout Rd Carpark' sign (on the left).





Main Ridge & Rain Forest Walks to Int of Rain Forest Walk & Link Track 0.5km 10 mins

(From 0.38 km) Turn left: From the intersection, this walk follows the 'Rainforest Walk to Lookout Rd Carpark' sign and sealed road gently downhill, while keeping the valley on the left. This walk continues for about 110m, passing a closed toilet block (on the left), until crossing over a bridge at the Rainforest picnic area. Then this walk continues gently uphill for about 30m, until coming to a three-way intersection with a gravel trail (on the right). This walk then turns right, following the 'Rainforest Walk' sign on the gravel trail for about 400m through dense rainforest (passing a 'Rainforest Picnic Area' sign on the left), until coming to a three-way intersection with a gently downhill trail (on the right) and a gently uphill trail (on the left).

Rod Earp Rainforest Picnic Area

This secluded, dense rainforest within Blackbutt Reserve has bench seats and a picnic table. The forest in this area hosts a large population of grey-headed flying foxes. These large bats migrate for food and then return to roost during the day. Watch out for the bat guano the ground. This picnic area feels a world away from downtown Newcastle.

Int of Rain Forest Walk & Lookout Trail to Int of Lookout Trail & Rain Forest Walk 0.1km 3 mins

(From 0.91 km) Continue straight: From the intersection, this walk follows the trail gently downhill, while keeping the gently uphill trail on your left and the valley on your right. This walk continues through rainforest for about 130m, passing a 'Rainforest Restoration Project' sign (on the left), until coming to a three-way intersection, with a trail and bridge on the right, and a 'Lookout Rd 420m' sign on the left.

Int of Lookout Trail AND Rain Forest Walk to Int of Rain Forest Walk AND Lookout Road 0.3km 5 mins

(From 1.03 km) Turn right: From the intersection, this walk crosses the bridge and follows the trail moderately steeply uphill, while leaving the face of the 'Lookout Rd 420m' sign directly behind. This walk continues, passing the 'Senses Track 150m' sign (on the right) and becoming gently uphill through forest for about 170m to pass a 'Rain Forest Area/Picnic Park' sign (on the left). Then this walk continues for about 140m, until coming to a car park and sealed road, with a 'Sensory Trail (return)' sign on the left.

Int of Rain Forest Walk & Lookout Road to Int of Lookout Road & Main Ridge Trail 0km

(From 1.34 km) Turn right: From the intersection, this walk follows the road gently downhill and across the car park, while initially leaving the 'Sensory Trail (return)' sign on your right. This walk continues for about 25m, until passing through yellow metal posts and coming to a three-way intersection, with a 'Main Ridge Walk (loop)' sign and trail (on the left) and square brick buildings (on the right).

Rain Forest Walk & Main Ridge Walk to Int of Lookout Road & Main Ridge Trail 0.1km 3 mins

(From 1.36 km) Continue straight: From the intersection, this walk follows the sealed road, while passing the two square brick buildings (on your right) and leaving the yellow metal posts (directly behind). This walk continues through a picnic area for about 160m until coming to a three-way intersection with a sealed road and 'Rainforest Walk' sign (on the right).

Int of Lookout Road & Main Ridge Trail to Int of Main Ridge Trail & Lookout Road 0.4km 5 mins

(From 1.51 km) Turn right: From the intersection, this walk follows the 'Rainforest Walk' sign gently downhill, while keeping the valley on your right. This walk continues through dense forest for about 170m until coming to a T-intersection, with a 'Rainforest Walk to Lookout Rd Carpark' sign indicating a right turn.
Continue straight: From the intersection, this walk follows the 'Wildlife Exhibit' sign and sealed road gently downhill, while keeping the valley on the right. This walk continues, undulating for about 260m until coming to a three-way intersection, with a 'Lookout Road Carpark' sign and gently uphill sealed road on the left.

Int of Main Ridge Trail & Lookout Road to Int of Boardwalk & Main Ridge Trail 0.1km 3 mins

(From 1.91 km) Continue straight: From the intersection, this walk follows the 'Wildlife Exhibitions 120m' sign and sealed road gently downhill, while keeping the 'Lookout Road Carpark' sign directly behind you. This walk continues through forest for about 140m, until coming to a four-way intersection with the Wildlife Exhibits boardwalk (on the left), a car park ahead and a disabled car park (on the right).



Rod Earp Rainforest Circuit (from Carnley Ave)

This space is available for advertising



Full colour
Great photos



Give the joy of walking to a friend
(and support wildwalks)

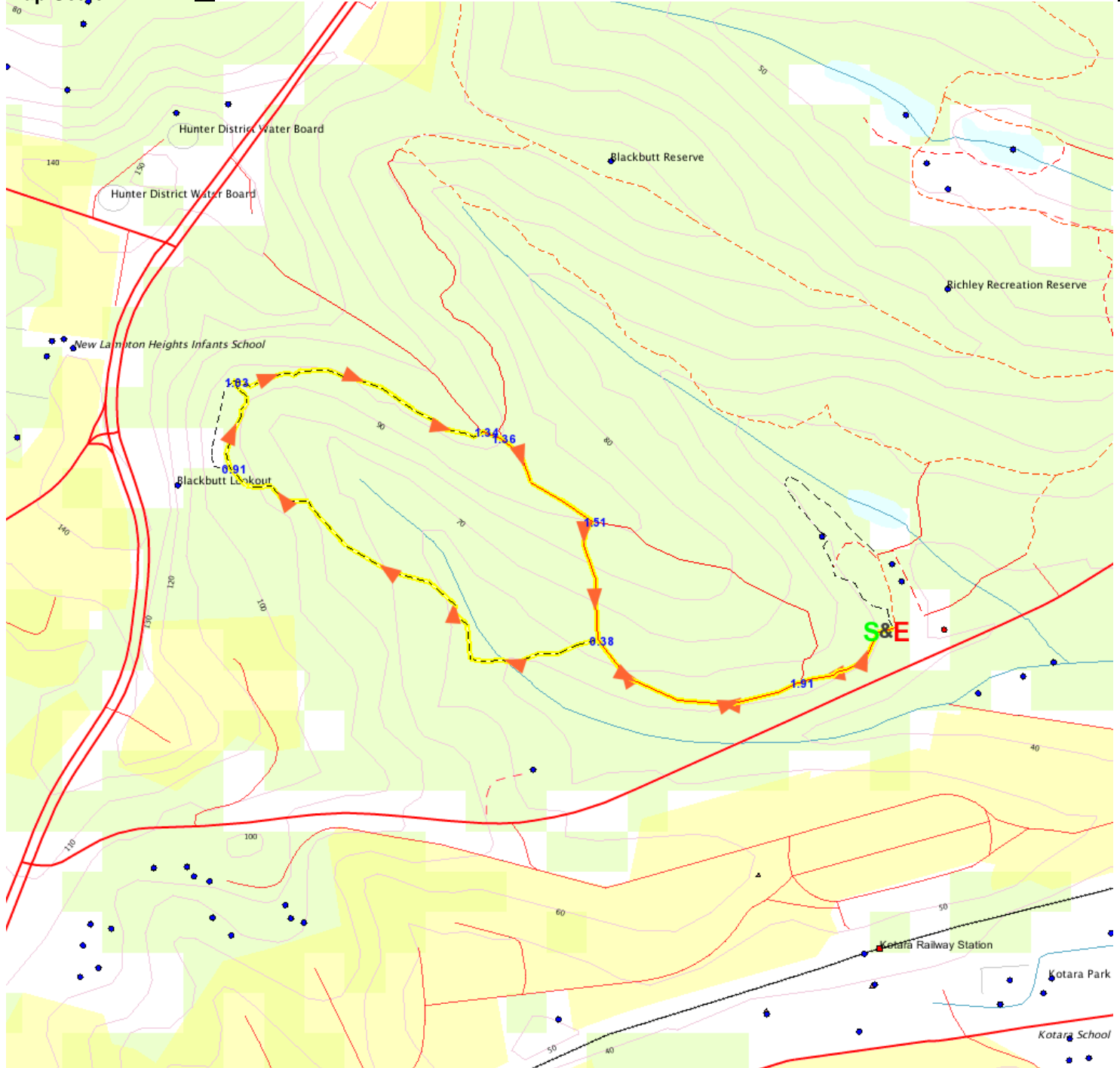
www.wildwalks.com/books.html



A walk for every body



Map Scale 1 km



Base map is used under licence and is (c) Department of lands Panorama Avenue Bathurst 2795 www.lands.nsw.gov.au

