

Rod Earp Rain Forest Circuit (from Lookout Rd)



This quiet and secluded walk is an easy amble through attractive rainforest. This walk circumnavigates Rainforest Creek and takes the walker into cool dense forest. You are likely to see flying foxes in the trees and if you are lucky, a Powerful Owl. Accessed from the quieter Lookout Road car park, this walk escapes the crowds well. A recommended walk, particularly on a hot day.

Length: 1.9 km
Time: 1 Hr
Climb: 104 m
Style: Circuit
Rating: Track: Moderate
Where: 3.2 km W of Adamstown
Transport: bus car



Visit www.wildwalks.com for more info



Side trips and Alternate routes mentioned in these notes are not included in the tracks overall rating, distance or time estimate. The notes only describe the side trips and Alternate routes in one direction. Allow extra time for resting and exploring areas of interest. Please ensure you and your group are well prepared and equipped for all possible hazards and delays. The authors, staff and owners of wildwalks take care in preparing these notes but will not accept responsibility for any inconvenience, loss or injury sustained by using these notes or maps. Please take care and share your experience through the website. Please check park closures, weather information and Fire Danger Rating just before leaving for your walk. Walk maybe closed during Total Fire Ban. GPS for start and end of this walk: -32.9336,151.6909



Wildwalks

Download the free Bushwalk Australia eMag

The eMagazine is produced by the community at bushwalk.com and the Wildwalks team Bushwalk.com Australia's most active bushwalking forum - Check it out.

Happy Reading. Matt :)



Blackbutt Reserve

Blackbutt Reserve, near Newcastle, occupies over 182 hectares of land and provides visitors with the chance to enjoy nature trails, wildlife exhibits, children's playgrounds and recreational facilities. The reserve is the perfect place for a relaxing family picnic or to explore on a bushwalk. Native wildlife, such as the Powerful Owl and the Grey-headed flying fox can be seen within the park. There is an information cottage at Carnley Avenue, which is open 7am to 5pm, or 7am to 7pm during daylight savings. The reserve has car parking at Carnley Avenue, Richley Reserve, Lookout Road and Mahonoy Drive. For more information, phone 02 4904 3344.



Lookout Road Recreation Area

The Lookout Road Recreation Area in Blackbutt Reserve has picnic tables, a drinking fountain, shelter, picnic tables and car parking. There is ample, free car parking. The car park is open from 7am to 5pm, or 7am to 7pm during daylight savings. For further information phone: 02 4904 3344.



Lookout Road Recreation Area to Int of Rain Forest Walk & Lookout Road 0.3km 5 mins

(From S) From the Lookout Road Recreation Area (off Lookout Rd, New Lambton Heights), this walk passes through metal gates and follows the 'Lower Carpark' sign and road moderately steeply downhill, while leaving the picnic area behind and to the right. This walk continues for about 300m, becoming gently downhill, until coming to a three-way intersection, with a trail and 'Sensory Trail (return)' sign on the right.



Int of Rain Forest Walk AND Lookout Road to Int of Lookout Trail AND Rain Forest Walk 0.3km 5 mins

(From 0.33 km) Turn right: From the intersection, this walk follows the 'Sensory Trail (return)' sign and trail gently downhill. This walk continues through forest for about 140m, to pass a 'Rain Forest Area/Picnic Park' sign (on the right). Then this walk continues for about 170m, passing the 'Senses Track 150m' sign (on the left), until crossing a bridge with a timber fence and coming to a three-way intersection, with a 'Lookout Rd 420m' sign ahead.



Int of Lookout Trail & Rain Forest Walk to Int of Rain Forest Walk & Lookout Trail 0.1km 3 mins

(From 0.63 km) Turn left: From the intersection, this walk follows the trail gently uphill, while initially leaving the bridge on the left and passing the 'Lookout Rd 420m' sign on the right. This walk continues through rainforest for about 130m, passing a 'Rainforest Restoration Project' sign (on the right), until coming to a three-way intersection, with a gently uphill trail on the right and a gently downhill trail on the left.



Rod Earp Rainforest Picnic Area

This secluded, dense rainforest within Blackbutt Reserve has bench seats and a picnic table. The forest in this area hosts a large population of grey-headed flying foxes. These large bats migrate for food and then return to roost during the day. Watch out for the bat guano on the ground. This picnic area feels a world away from downtown Newcastle.



Int of Rain Forest Walk & Link Track to Main Ridge & Rain Forest Walks 0.5km 10 mins

(From 0.75 km) Continue straight: From the intersection, this walk follows the gravel trail gently downhill, while initially keeping the gently downhill trail behind you on your left and keeping the valley on your left. This walk continues (passing a 'Rainforest Picnic Area' sign on your right) through dense rainforest for about 400m, until coming to a three-way intersection, with a sealed road and 'Rainforest Walk' sign (on the right). Then this walk turns left onto the gently downhill sealed road and after about 30m, crosses a bridge at the Rainforest picnic area. This walk then follows the road gently uphill, passing a closed toilet block (on the right) for about 110m, until coming to a three-way intersection with a sealed road (on the left) and a 'Wildlife Exhibit' sign (on the right).

Main Ridge & Rain Forest Walks to Int of Lookout Road & Main Ridge Trail 0.2km 4 mins

(From 1.28 km) Turn left: From the intersection, this walk follows the sealed road gently uphill, while leaving the 'Rainforest Walk to Lookout Rd Carpark' sign directly behind you and initially passing a small picnic area on your right. This walk continues through dense forest for about 170m until coming to a level three-way intersection, with a picnic area directly ahead and 'Rainforest Walk' sign on the right.

Int of Lookout Road & Main Ridge Trail to Lookout Road Recreation Area 0.5km 10 mins

(From 1.44 km) Turn left: From the intersection, this walk follows the sealed road gently uphill, while moving directly away from the face of the 'Rainforest Walk' sign. This walk continues, heading through a picnic area for about 160m, passing two square brick buildings, and then coming to a three-way intersection with a gently downhill sealed road (on the right) and a gently uphill sealed car park, past yellow metal posts (directly ahead).

Continue straight: From the intersection, this walk passes through the yellow metal posts and crosses the car park gently uphill, while initially passing the 'Main Ridge Walk (loop)' sign on the right. This walk continues for about 25m, until coming to a three-way intersection with a trail and 'Sensory Trail (return)' sign on the left.

Continue straight: From the intersection, this walk follows the road gently uphill, while initially passing the 'Sensory Trail (return)' sign on your left. This walk continues, becoming moderately steeply uphill for about 300m, to pass through a metal gate and into the Lookout Road Recreation Area.

A list of paper topographical maps that cover this walk

[Wallsend](#) 1:25 000 Map Series

Newcastle 1:100 000 Map Series

Nearby outdoor and camping stores

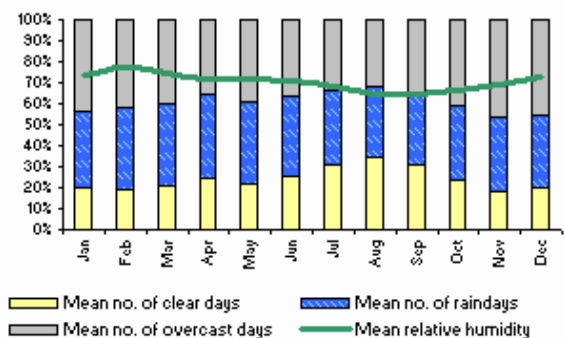
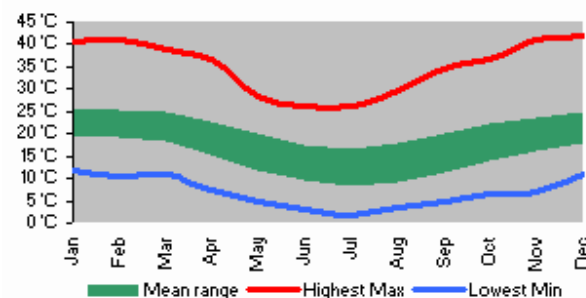
Kathmandu 6 Northcott Drv Kotara (02) 4952 1233

Aussie Disposal Newcastle 4/ 14 Northcott Drv Kotara (02) 4965 5500

Boots Great Outdoors 27 Lambton Rd Broadmeadow (02) 4969 4655

Wallsend Army Disposal Store Cnr Tyrrell & Council Sts Wallsend (02) 4951 5725

Camping World 3/ 276 Macquarie Rd Warners Bay (02) 4956 6183





Rod Earp Rain Forest Circuit (from Lookout Rd)

This space is available for advertising



Full colour
Great photos



Give the joy of walking to a friend
(and support wildwalks)

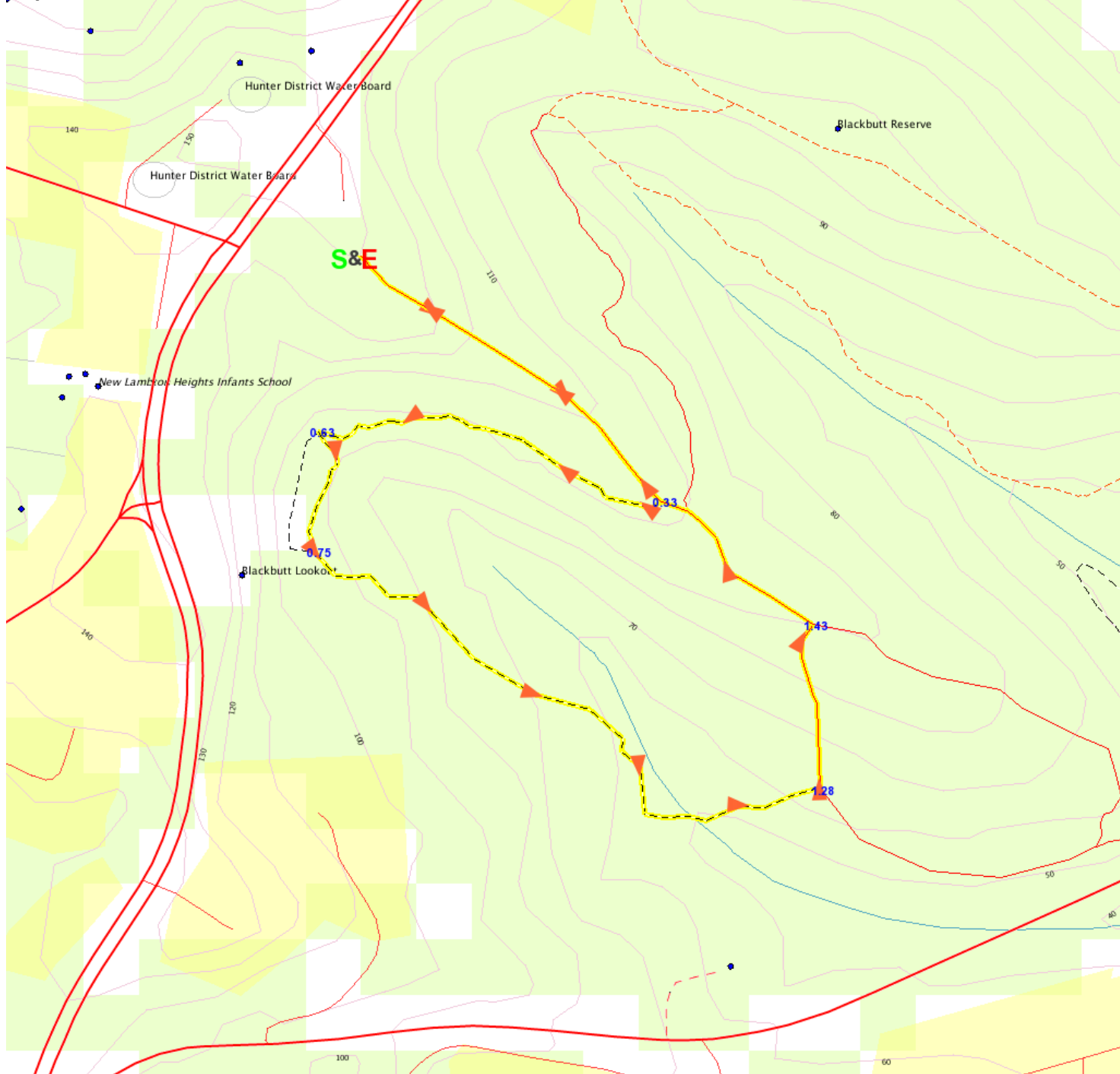
www.wildwalks.com/books.html



A walk for every body



Map Scale 500 m



Base map is used under licence and is (c) Department of lands Panorama Avenue Bathurst 2795 www.lands.nsw.gov.au

