



A great family length walk that takes in both of the large reserves in the Blackbutt Park. This walk starts at Richley Reserve and travels to Carnley Reserve and the Wildlife Exhibits before returning a different way to Richley Reserve. Never far from facilities, this walk suits families or those who want to stay on the wider trails. An excellent walk.

Length: 2.9 km
Time: 1 hr 15 mins
Climb: 96 m
Style: Circuit
Rating: Track: Moderate
Where: 2.4 km W of Adamstown
Transport: bus car



Visit www.wildwalks.com for more info



Side trips and Alternate routes mentioned in these notes are not included in the tracks overall rating, distance or time estimate. The notes only describe the side trips and Alternate routes in one direction. Allow extra time for resting and exploring areas of interest. Please ensure you and your group are well prepared and equipped for all possible hazards and delays. The authors, staff and owners of wildwalks take care in preparing these notes but will not accept responsibility for any inconvenience, loss or injury sustained by using these notes or maps. Please take care and share your experience through the website. Please check park closures, weather information and Fire Danger Rating just before leaving for your walk. Walk maybe closed during Total Fire Ban. GPS for start and end of this walk: -32.9324,151.7



Wildwalks

Download the free [Bushwalk Australia eMag](http://bushwalk.com)

The eMagazine is produced by the community at bushwalk.com and the Wildwalks team
[Bushwalk.com](http://bushwalk.com) Australia's most active bushwalking forum - Check it out.

Happy Reading. Matt :)



Blackbutt Reserve

Blackbutt Reserve, near Newcastle, occupies over 182 hectares of land and provides visitors with the chance to enjoy nature trails, wildlife exhibits, children's playgrounds and recreational facilities. The reserve is the perfect place for a relaxing family picnic or to explore on a bushwalk. Native wildlife, such as the Powerful Owl and the Grey-headed flying fox can be seen within the park. There is an information cottage at Carnley Avenue, which is open 7am to 5pm, or 7am to 7pm during daylight savings. The reserve has car parking at Carnley Avenue, Richley Reserve, Lookout Road and Mahonoy Drive. For more information, phone 02 4904 3344.



Richley Reserve

The Richley Reserve, within Blackbutt Reserve, has a park office, large pond areas with swans (beware the swans as they defend their territory), sheltered picnic tables, water taps, toilets, open grassed areas, a children's playground, electric barbecues and a car park. The Richley Reserve car park has disability friendly parking and is open from 7am to 5pm or 7am to 7pm during daylight savings. For further information phone 02 4904 3344.



Richley Reserve (Car Park) to Int of Richley Reserve & Tall Tree Walk (loop) 0.2km 4 mins

(From S) From the Richley Reserve (Car Park), this walk follows the car park gently downhill, while leaving the ponds directly behind you. This walk continues for about 150m, to find a three-way intersection, with a metal gate and 'Blackbutt Reserve - Freyberg St Entrance' sign (on the right). This walk turns right and continues gently uphill for about 45m, passing through the metal gate, until coming to a three-way intersection with a sealed trail and 'Tall Tree Walk (loop)' sign (on the left).

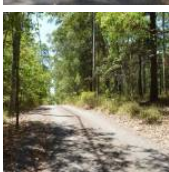


Int of Richley Reserve & Tall Tree Walk (loop) to Int of Main Ridge AND Tall Trees Walks 0.7km 10 mins

(From 0.2 km) Veer left: From the intersection, this walk follows the 'Wildlife Exhibit' sign and trail gently uphill, while keeping the valley on your left. This walk continues through forest for about 300m, until coming to a faint three-way intersection with a track on the left (houses visible on the left) at a right-hand turn in the trail.



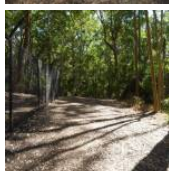
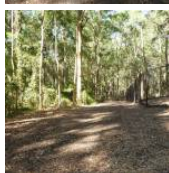
Turn right: From the intersection, this walk follows the trail gently uphill, while leaving Dunkley Ave and the houses directly behind. This walk continues through attractive forest for about 400m until coming to a four-way intersection, with a 'Main Ridge Walk (loop)' sign (on the right) and a timber seat.



Int of Carnley & Tall Trees Trails to Carnley Ave Car Park (Eastern end) 0.3km 5 mins

(From 0.85 km) Turn left: From the intersection, this walk follows the trail gently downhill, while moving directly away from the face of the 'Richley Car Park' sign and keeping the valley on the left. This walk continues, undulating for about 170m until coming to a three-way intersection, with a trail and metal ring fence (on the left).

Veer left: From the intersection, this walk follows the trail gently downhill, while keeping the metal ring fence on your right. This walk continues for about 60m, until passing around a locked metal gate and coming to the end of the metal ring fence and the Carnley Avenue car park.



Carlney Ave Car Park (Eastern end) to Carlney Ave Car Park (western end) 0.1km 2 mins

(From 1.13 km) Veer right: From the intersection, this walk follows the road gently downhill through the car park, while leaving the metal ring fence and locked metal gate directly behind. This walk continues for about 60m, turning right (leaving Carnley Avenue on the left in the distance). Then this walk continues for about 40m, to come to a three-way intersection, with a footpath and 'Blackbutt Reserve - Carnley Ave Car Park' sign on the right. This walk then continues straight ahead for about 50m, crossing a bridge over Black Duck Creek and then continuing gently uphill for about 50m, until coming to a three-way intersection with a footpath and 'Blackbutt Reserve - Carnley Ave Entrance' sign (on the right).

Carnley Ave Reserve

The Carnley Avenue Reserve, within Blackbutt Reserve, is wheelchair accessible and has toilets, drinking fountains, gas/electric barbeques, sheltered picnic tables, a children's playground, fenced displays of kangaroos and emu, a large black duck pond and an information centre that is housed within a replica pioneering cottage. The information cottage has a range of souvenirs, focusing on quality and affordable products. A fee of \$4 per vehicle can be paid from the automatic machines in the car park. The information centre is open 7am to 5pm, or 7am to 7pm during daylight savings. For further information phone: 02 4904 3344.

Carnley Ave Car Park to Int of Boardwalk & Carnley Trail 0.1km 2 mins

(From 1.26 km) Turn right: From the Carnley Ave Car Park (Off Carnley Ave, Kotara), this walk follows the footpath through the metal fenced gate way, while initially keeping the 'Blackbutt Reserve - Carnley Ave Reserve' sign on your left. This walk follows the footpath for about 90m (passing toilets, picnic tables and a children's playground on the left), until coming to a four-way intersection, with Black Duck Pond directly ahead and a replica pioneering cottage on the left. Turn left: From the intersection, this walk follows the 'Animal' sign and sealed trail gently uphill, while initially passing the replica pioneering cottage on the right. This walk continues for about 20m until coming to a three-way intersection, with a large timber fenced gate (on the right).

Int of Boardwalk & Carnley Trail to Int of Boardwalk & Main Ridge Trail 0.1km 2 mins

(From 1.37 km) Turn left: From the intersection, this walk follows the sealed trail gently uphill, while initially passing the large timber fenced gate on the right and keeping the valley on the left. This walk continues for about 90m, passing an 'Animals' sign and 'Information' sign (on the right) and concrete stairs (on the left), until coming to a four-way intersection, with an 'Animals' sign and elevated boardwalk (on the right) and disabled parking and general car parking (on the left).

Blackbutt Wildlife Exhibits

This boardwalk in the Blackbutt Reserve offers wildlife exhibits on an elevated timber boardwalk which is wheelchair accessible. Some of the wildlife that you are likely to encounter are kangaroos, koalas, wombats, Lace monitors, Wonga Pigeons, Red-winged Parrots, Black-winged Stilt, Buff-banded Rail, Herons, Eastern long-necked Turtle, Kingfishers, Turquoise Parrot, Banded Plover, Peaceful Dove, Cockatoos, Lorikeets, True Parrots, Major Mitchell Cockatoo, Bush Stone Curlew, Long-tailed Finch and Barking Owls. Entry is free and the exhibit is open from 9.00am to 5.00pm every day (closed Christmas Day, Good Friday and until 1pm ANZAC Day). Personal koala encounters are available at 2pm daily and cost \$3.50/person. For further information, phone: 02 4904 3344. [More info](#)

Int of Boardwalk & Main Ridge Trail to Int of Boardwalk & Carnley Trail 0.4km 5 mins

(From 1.47 km) Turn right: From the intersection, this walk follows the 'Animals' sign and timber boardwalk gently uphill, while initially keeping the car park on the right. This walk continues, undulating for about 300m on an elevated boardwalk through large and small animal enclosures, with a fascinating selection of native animals and birds. Then this walk continues on a sealed footpath for about 70m, until passing through a high timber fenced gate and coming to a three-way intersection, with a sealed trail (on the left towards the pond) and a trail directly ahead.

Int of Boardwalk & Carnley Trail to Carnley Avenue Reserve 0km

(From 1.85 km) Turn left: From the intersection, this walk follows the sealed trail gently downhill and towards the Black Duck Pond, while initially keeping the large timber fenced gate on your left. This walk continues for about 20m until coming to a four-way intersection, with the replica pioneering cottage, Black Duck Pond and a 'Richley Reserve' sign (on the left).



Carnley Avenue Reserve to Int of Blueberry Ash Walk & Carnley Trail 0.1km 2 mins

(From 1.87 km) Continue straight: From the intersection, this walk follows the sealed road, while initially keeping the Black Duck Pond on your left and the replica pioneering cottage directly behind you. This walk continues, passing the Black Duck Pond (on the left) and continues gently uphill for about 150m (passing a sheltered picnic area and children's playground on the right) until coming to a three-way intersection with a gravel trail (on the left), a metal ring fence (on the right) and a 'Main Ridge Walk (loop)' sign.



Int of Carnley Trail & Blueberry Ash Walk to Int of Carnley & Tall Trees Trails 0.3km 5 mins

(From 2 km) Veer right: From the intersection, this walk follows the 'Main Ridge Walk (loop)' sign on your left and trail gently downhill. This walk continues through forest with a metal ring fence (on the left) for about 170m, until coming to a three-way intersection with a gently downhill trail (on the right) and the end of the metal ring fence.

Continue straight: From the intersection, this walk follows the gently downhill trail and moves directly away from the metal ring fence, while initially keeping the trail and fence on your right. This walk continues, undulating for about 170m until coming to a three-way intersection, with a 'Richley Car Park' sign.



Int of Main Ridge & Tall Trees Walks to Richley Reserve (Short Cut Intersection) 0.2km 4 mins

(From 2.3 km) Continue straight: From the intersection, this walk passes around a metal post and follows the 'Richley Carpark 400m' sign and sealed footpath gently downhill, while leaving the bench seat directly behind. This walk continues through forest for about 140m, to pass around a metal post and find a large grassy picnic area. Then this walk continues straight ahead over grass and through some trees for about 70m, until coming to a sealed trail (with the valley beyond).



Richley Reserve (Short Cut Intersection) to Richley Reserve (car park) 0.4km 5 mins

(From 2.49 km) Turn left: From the trail below the large elevated grassed picnic area, this walk follows the gently downhill trail west, while keeping the valley on your right. This walk continues for about 120m to find a sheltered picnic area (on the right). Then this walk continues straight ahead and gently uphill for about 160m, becoming gently downhill and passing timber steps (on the left) and a toilet block (on the right), until coming to a four-way intersection, with a playground on the right and a timber footbridge directly ahead.

Turn right: From the intersection, this walk follows the footpath gently downhill, while initially keeping the timber footbridge on your left. This walk continues for about 180m, beside a pond (on your left), until coming to a car park with a sheltered picnic table and 'Tall Tree Ridge Walk' sign (on the left).



A list of paper topographical maps that cover this walk

[Wallsend](#) 1:25 000 Map Series

Newcastle 1:100 000 Map Series



Nearby outdoor and camping stores

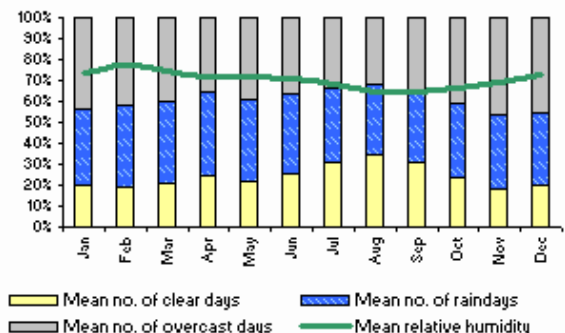
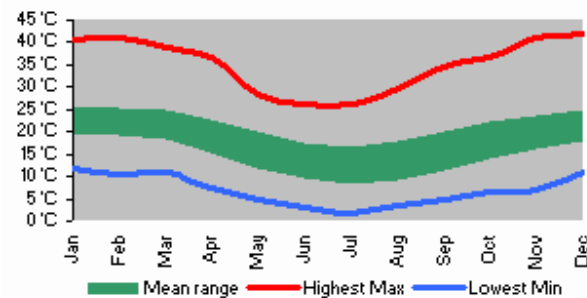
Kathmandu 6 Northcott Drv Kotara (02) 4952 1233

Aussie Disposal Newcastle 4/ 14 Northcott Drv Kotara (02) 4965 5500

Boots Great Outdoors 27 Lambton Rd Broadmeadow (02) 4969 4655

Wallsend Army Disposal Store Cnr Tyrrell & Council Sts Wallsend (02) 4951 5725

Mountain Designs Cnr King & National Park Sts Newcastle West (02) 4962 3311





Richley Reserve to Carnley Reserve Circuit

This space is available for advertising



Full colour
Great photos



Give the joy of walking to a friend
(and support wildwalks)

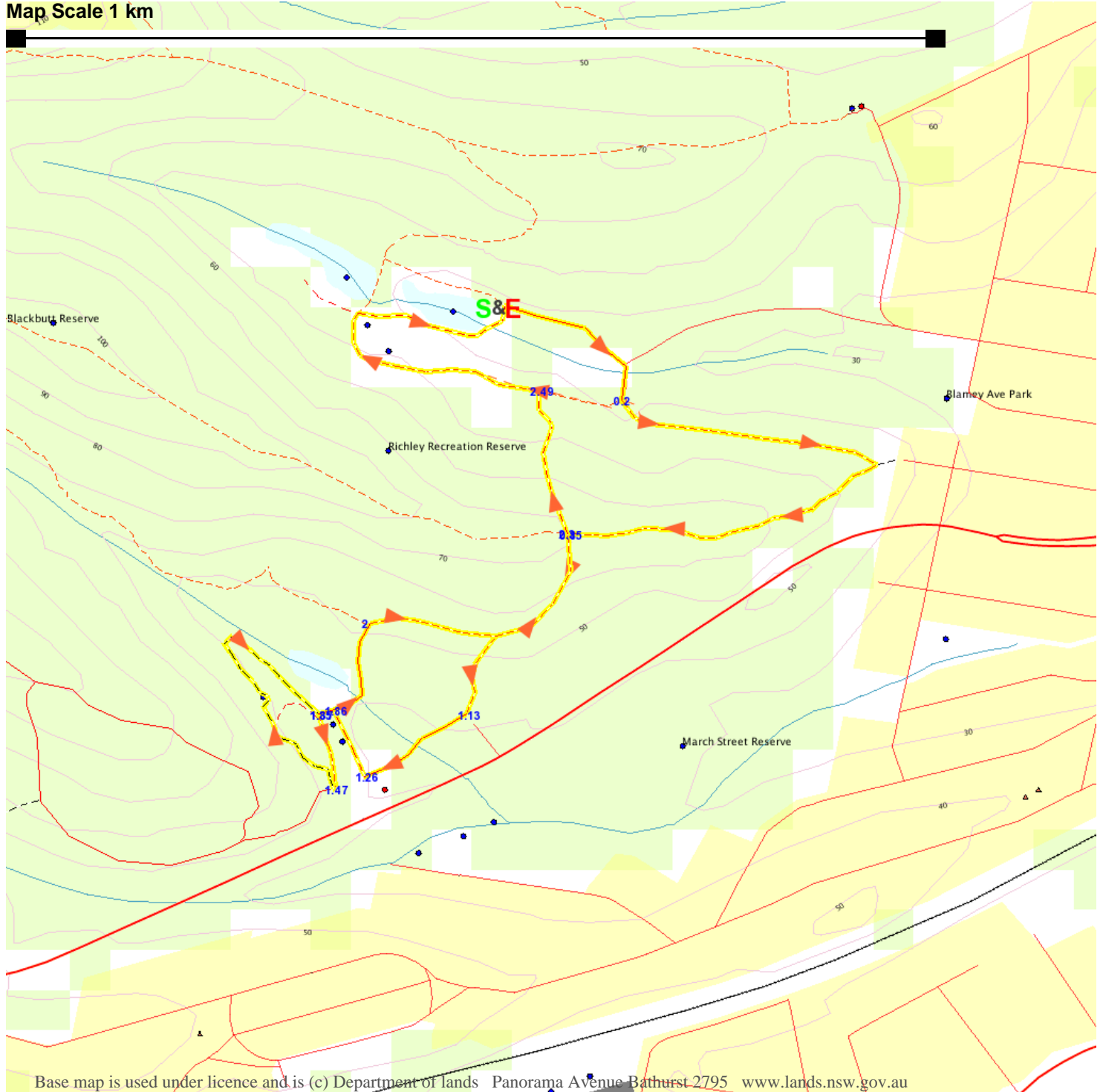
www.wildwalks.com/books.html



A walk for every body



Map Scale 1 km



Base map is used under licence and is (c) Department of lands Panorama Avenue Bathurst 2795 www.lands.nsw.gov.au

