



This easy walk, which is wheelchair accessible, travels through open grasslands that are surrounded by healthy eucalyptus forest. The grasslands have two large ponds, with two black swans on the lower pond. Do beware of the swans defending their territory. Richley Reserve is well maintained and makes this walk particularly attractive. This walk is recommended.

Length: 0.7 km
Time: 30 mins
Climb: 21 m
Style: Circuit
Rating: Path: Easy - Wheelchair accessible
Where: 2.4 km W of Adamstown
Transport: bus car



Visit www.wildwalks.com for more info



Side trips and Alternate routes mentioned in these notes are not included in the tracks overall rating, distance or time estimate. The notes only describe the side trips and Alternate routes in one direction. Allow extra time for resting and exploring areas of interest. Please ensure you and your group are well prepared and equipped for all possible hazards and delays. The authors, staff and owners of wildwalks take care in preparing these notes but will not accept responsibility for any inconvenience, loss or injury sustained by using these notes or maps. Please take care and share your experience through the website. Please check park closures, weather information and Fire Danger Rating just before leaving for your walk. Walk maybe closed during Total Fire Ban. GPS for start and end of this walk: -32.9324,151.7



Wildwalks

Download the free Bushwalk Australia eMag

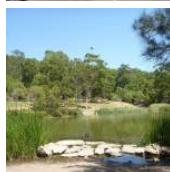
The eMagazine is produced by the community at bushwalk.com and the Wildwalks team
Bushwalk.com Australia's most active bushwalking forum - Check it out.

Happy Reading. Matt :)



Blackbutt Reserve

Blackbutt Reserve, near Newcastle, occupies over 182 hectares of land and provides visitors with the chance to enjoy nature trails, wildlife exhibits, children's playgrounds and recreational facilities. The reserve is the perfect place for a relaxing family picnic or to explore on a bushwalk. Native wildlife, such as the Powerful Owl and the Grey-headed flying fox can be seen within the park. There is an information cottage at Carnley Avenue, which is open 7am to 5pm, or 7am to 7pm during daylight savings. The reserve has car parking at Carnley Avenue, Richley Reserve, Lookout Road and Mahonoy Drive. For more information, phone 02 4904 3344.



Richley Reserve

The Richley Reserve, within Blackbutt Reserve, has a park office, large pond areas with swans (beware the swans as they defend their territory), sheltered picnic tables, water taps, toilets, open grassed areas, a children's playground, electric barbecues and a car park. The Richley Reserve car park has disability friendly parking and is open from 7am to 5pm or 7am to 7pm during daylight savings. For further information phone 02 4904 3344.



Richley Reserve (car park) to Richley Reserve (four way intersection) 0.2km 3 mins

(From S) From the Richley Reserve car park (next to the 'Tall Tree Ridge Walk' sign), this walk follows the footpath, while keeping the sign and pond on your right. This walk continues with the pond on your right for about 180m, until the footpath becomes gently uphill and comes to a four-way intersection, with a timber footbridge on the right and a children's playground on the left.



Richley Reserve (Four Way Intersection) to Richley Reserve (Short Cut Intersection) 0.3km 5 mins

(From 0.18 km) Turn left: From the intersection, this walk follows the trail gently uphill, while initially keeping the children's playground on your left and the timber footbridge directly behind you. This walk continues for about 160m, passing a toilet block (on your left) and timber steps (on your right), to find a gently downhill section of trail (with a sheltered picnic area on the left). Then this walk continues straight ahead and gently uphill for about 120m, until coming to a section of trail that allows easy access to the large elevated grassed picnic area to the right.



Richley Reserve (Short Cut Intersection) to Int of Richley Reserve & Tall Tree Walk (loop) 0.1km 2 mins

(From 0.44 km) Continue straight: From the trail below the large elevated grassed picnic area, this walk follows the trail gently downhill, while keeping the valley on your left. This walk continues through grassed parkland for about 120m, until coming to a three-way intersection with a sealed trail and a 'Tall Tree Walk (loop)' sign (on the right).



Int of Richley Reserve & Tall Tree Walk (loop) to Richley Reserve (Car Park) 0.2km 4 mins

(From 0.53 km) Turn left: From the intersection, this walk follows the sealed trail gently downhill, keeping the 'Tall Tree Walk (loop)' sign directly behind you while walking towards the road and car park. This walk continues for about 45m, passing through a metal gate to find a three-way intersection, with a road on the right and the car park on the left. Then this walk turns left and follows the car park gently uphill for about 150m, until coming to a 'Tall Tree Ridge Walk' sign and sheltered picnic tables ahead.



A list of paper topographical maps that cover this walk

[Wallsend](#) 1:25 000 Map Series

Newcastle 1:100 000 Map Series

Nearby outdoor and camping stores

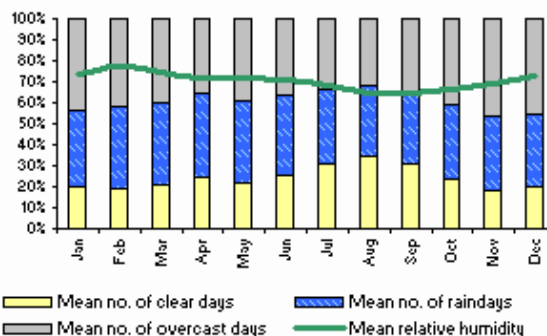
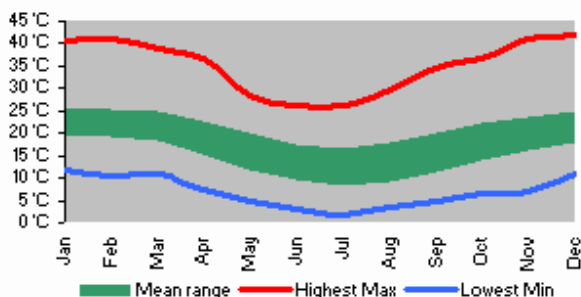
Kathmandu 6 Northcott Drv Kotara (02) 4952 1233

Aussie Disposal Newcastle 4/ 14 Northcott Drv Kotara (02) 4965 5500

Boots Great Outdoors 27 Lambton Rd Broadmeadow (02) 4969 4655

Wallsend Army Disposal Store Cnr Tyrrell & Council Sts Wallsend (02) 4951 5725

Mountain Designs Cnr King & National Park Sts Newcastle West (02) 4962 3311



This space is available for advertising



Full colour
Great photos



Give the joy of walking to a friend
(and support wildwalks)

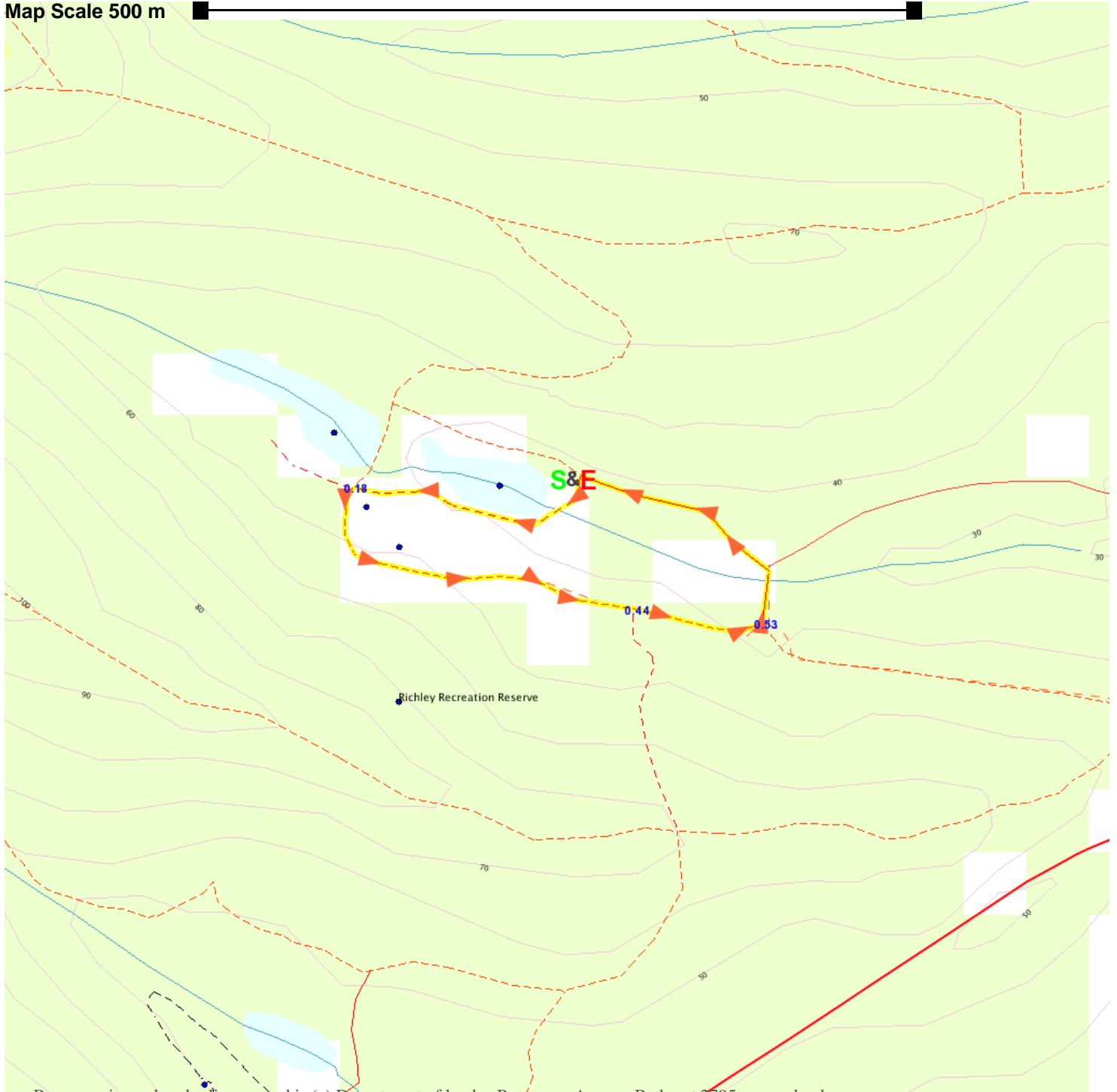
www.wildwalks.com/books.html



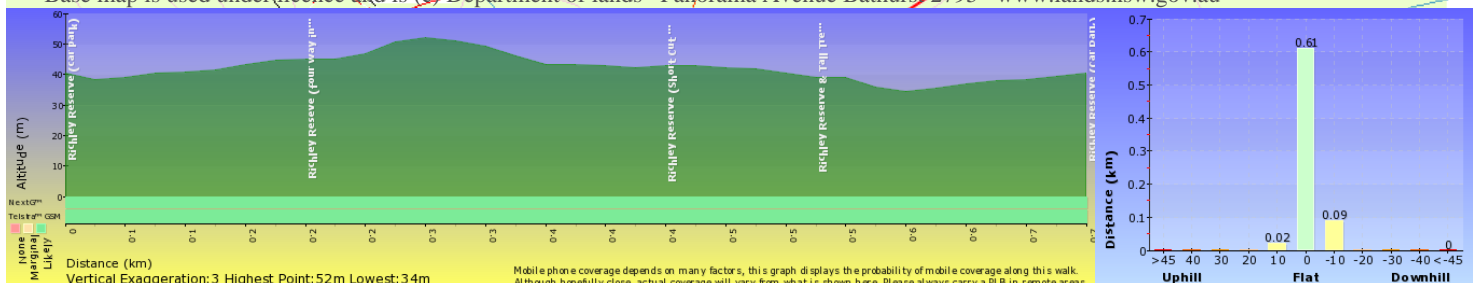
A walk for every body



Map Scale 500 m



Base map is used under licence and is (c) Department of lands Panorama Avenue Bathurst 2795 www.lands.nsw.gov.au



Mobile phone coverage depends on many factors, this graph displays the probability of mobile coverage along this walk. Although hopefully close, actual coverage will vary from what is shown here. Please always carry a PLB in remote areas.