



This short walk follows a set of sandstone steps from the narrow streets of Vaucluse to the small, isolated Queens Beach on Sydney Harbour. The beach has great views across the top of Rose Bay to the city and Sydney Harbour Bridge. A great place to wet the toes and enjoy a peaceful lunch by the water. Although the walk is short, the only flat section is on the beach.

Sydney Harbour National Park

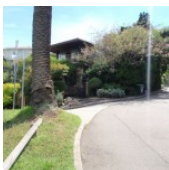
Length: 0.1 km
Time: 10 mins
Climb: 18 m
Style: Return
Rating: Track: Moderate
Where: 1.4 km WNW of Vaucluse
Transport: bus car



Visit www.wildwalks.com for more info



Side trips and Alternate routes mentioned in these notes are not included in the tracks overall rating, distance or time estimate. The notes only describe the side trips and Alternate routes in one direction. Allow extra time for resting and exploring areas of interest. Please ensure you and your group are well prepared and equipped for all possible hazards and delays. The authors, staff and owners of wildwalks take care in preparing these notes but will not accept responsibility for any inconvenience, loss or injury sustained by using these notes or maps. Please take care and share your experience through the website. Please check park closures, weather information and Fire Danger Rating just before leaving for your walk. Walk maybe closed during Total Fire Ban. GPS for start and end of this walk: -33.8609,151.2695



Wildwalks



Download the free [Bushwalk Australia eMag](http://bushwalk.com.au)

The eMagazine is produced by the community at bushwalk.com and the Wildwalks team
[Bushwalk.com](http://bushwalk.com) Australia's most active bushwalking forum - Check it out.

Happy Reading. Matt :)



Int of Queens Ave and Little Queens Lane to Queens Beach 0.1km 2 mins

(From S) From the 'Hermitage Foreshore Walk - Queens Beach' sign on Queens Ave (just near Little Queens Lane), this walk heads down the sandstone steps towards the water. Partway down the steps (before the beach), this track comes to three-way intersection with the main Hermitage Foreshore walking track.

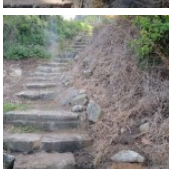
Veer left: From the intersection, this walk heads down the steps towards the beach. The track then comes to a boardwalk, a 'Hermitage Foreshore Walk - Queens Beach' sign and a short set of steps leading down to the beach.



Queens Beach

Queens Beach is a small, 50m wide sandy beach that faces west, near Queens Ave Vaucluse. The beach has the Hermitage Foreshore walk running behind it. The beach is protected from the ocean surf and is not patrolled. There are great views across the harbour to the city and Harbour Bridge. A quiet spot, providing an excuse to enjoy the view and splash the feet.

This is a 'Return' style walk - retrace your steps back to the beginning when you are ready.



A list of paper topographical maps that cover this walk

[Sydney Heads](http://www.sydneymaps.com.au) 1:25 000 Map Series

Sydney 1:100 000 Map Series



Nearby outdoor and camping stores

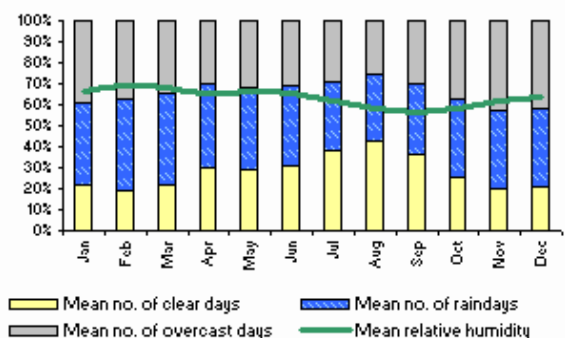
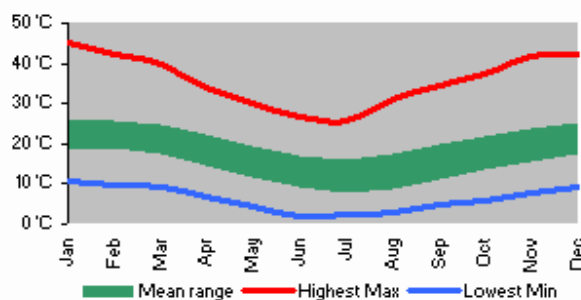
Outdoor Equipment 60 Spring St Bondi Junction (02) 9389 8122

Inski 46 York St Sydney (02) 9233 3200

Mitchells Adventure 81 York St Sydney (02) 9299 6321

Venus Repair Workshop Suite 36a 104 Bathurst St Sydney (02) 9267 0706

Trek & Travel 447 Kent St Sydney (02) 9261 3435



This space is available for advertising



Full colour
Great photos



Give the joy of walking to a friend
(and support wildwalks)

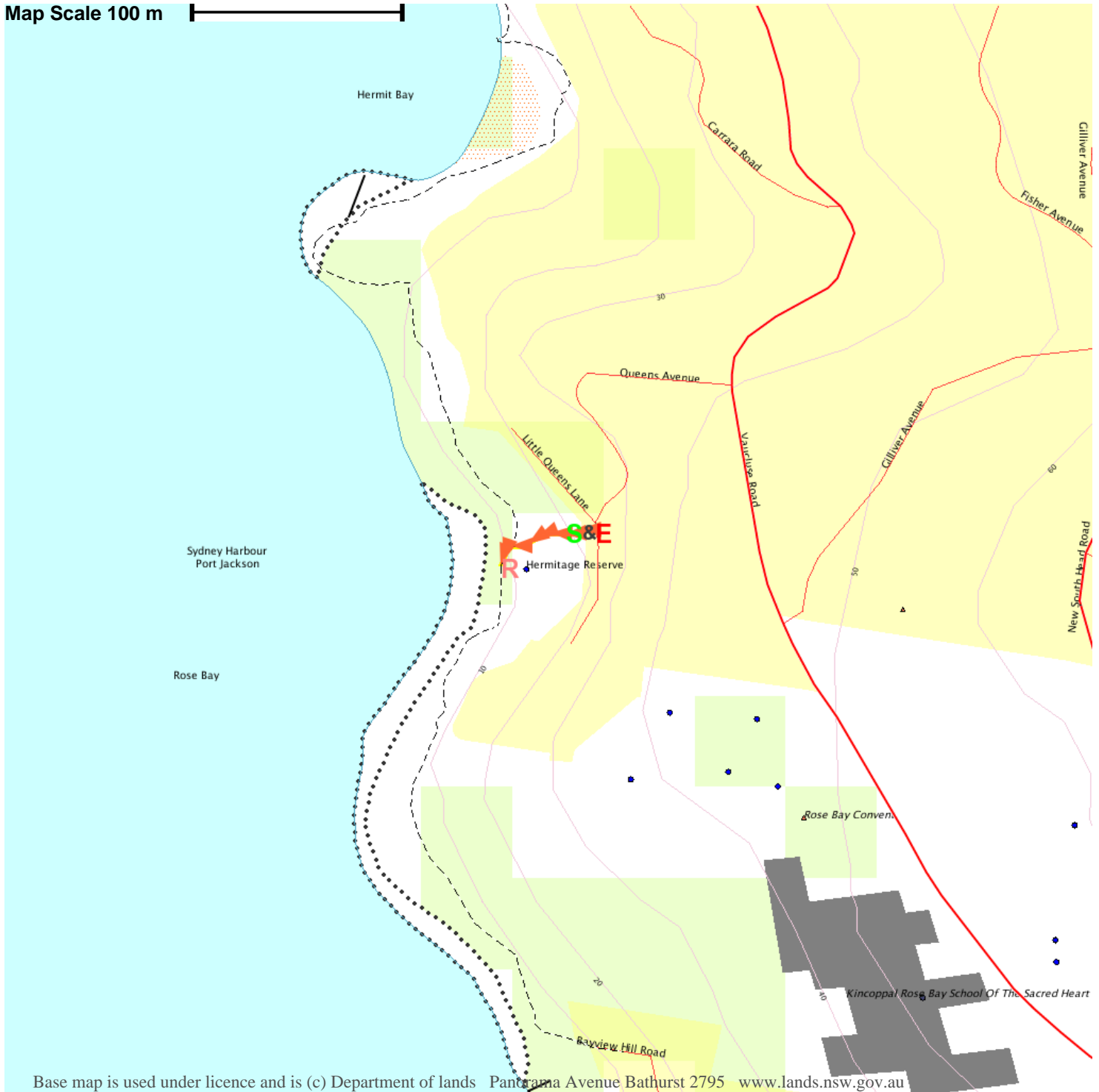
www.wildwalks.com/books.html



A walk for every body



Map Scale 100 m



Base map is used under licence and is (c) Department of lands Pantorama Avenue Bathurst 2795 www.lands.nsw.gov.au

