



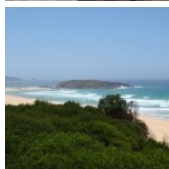
This walk is a great way to enjoy the panoramic views from the lookout on Bournda Island. The views extend north up Bournda Beach and south all the way along North Tura beach. The walk mainly follows the beach, giving you a chance to feel the sand between the toes and get the feet wet when playing games with the incoming waves.

Bournda National Park

Length: 2.3 km
Time: 45 mins
Climb: 30 m
Style: Return
Rating: Track: Hard
Where: 11 km SSW of Tathra
Transport: car



Visit www.wildwalks.com for more info



Side trips and Alternate routes mentioned in these notes are not included in the tracks overall rating, distance or time estimate. The notes only describe the side trips and Alternate routes in one direction. Allow extra time for resting and exploring areas of interest. Please ensure you and your group are well prepared and equipped for all possible hazards and delays. The authors, staff and owners of wildwalks take care in preparing these notes but will not accept responsibility for any inconvenience, loss or injury sustained by using these notes or maps. Please take care and share your experience through the website. Please check park closures, weather information and Fire Danger Rating just before leaving for your walk. Walk maybe closed during Total Fire Ban. GPS for start and end of this walk: -36.8291,149.9346

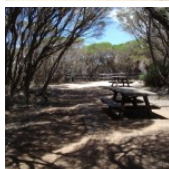


Wildwalks

Download the free [Bushwalk Australia eMag](http://bushwalk.com)

The eMagazine is produced by the community at bushwalk.com and the Wildwalks team
[Bushwalk.com](http://bushwalk.com) Australia's most active bushwalking forum - Check it out.

Happy Reading. Matt :)

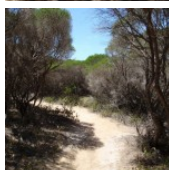


Int. Nth Tura Car Park and Lookout Trk to Nth Tura Lookout 0km Optional Side Trip:

(From S) Turn left: From the intersection, the walk follows the sign for 'Viewing Platform' out to the verandah lookout. (Retrace your steps back to the main track, then turn right to continue along this walk.)

North Tura Lookout

North Tura Beach Lookout is located between Tathra and Merimbula in Bournda National Park. The lookout has stunning views over North Tura Beach, all the way south to Tura Headland and out to sea. The lookout is also a great viewing point for Turingal Head and Bournda Island. The lookout is easily accessed from North Tura car park and is wheelchair-accessible.



Int. Nth Tura Car Park and Lookout Trk to Nth Tura Beach 0.1km 2 mins

(From S) From the intersection, the walk follows the walking tracks sign along the fence line, with the car park on your left. The walk continues to the picnic table and signpost.

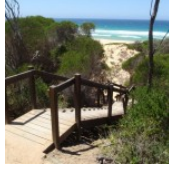
Veer right: From the intersection, this walk follows the sign 'Steps to Beach 80m' down the hill. The walk winds down through the melaleuca trees to an unsignposted intersection with a set of stairs.

Turn right: From the intersection, this walk follows the stairs down the hill and through the heath and then onto the beach.



North Tura Beach

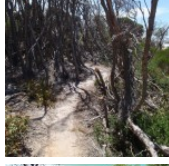
North Tura Beach is located north of Merimbula and Tura Heads. The beach is a beautiful expanse of sand of nearly 2.5km, stretching from Tura Heads to Bournda Island in the north. North Tura is an easterly-facing beach which is accessed by Widgegam Rd off the Sapphire Coast Drive.



Nth Tura Beach to Bournda Island Trk 0.9km 10 mins

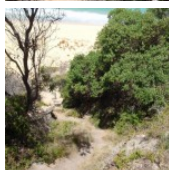
(From 0.13 km) Turn left: From the staircase, this walk heads north along the beach towards Bournda Island, keeping the ocean to the right. Just before the rocky Bournda Island, there is a small but distinct track on the left through the heath.

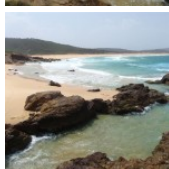
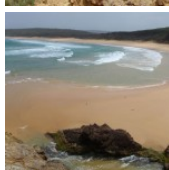
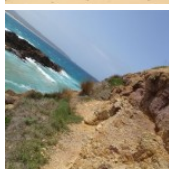
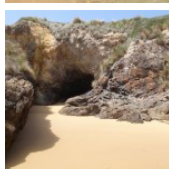
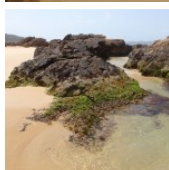
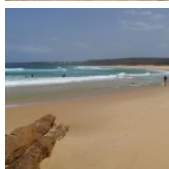
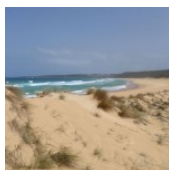
Turn right: From the bottom of the steps, this walk heads away from the stairs and across the beach towards Bournda Island. The walk continues along the sand to a small cave feature at the base of the island.



Bournda Island Trk to Bournda Island 0.1km 1 mins

(From 1.08 km) Veer right: From the intersection, the walk keeps the cave feature on the right and climbs up the ridge of rock. The track winds along the left-hand side of the island, with the ocean below on the left. The walk heads up onto the hill with views of both North Tura and Bournda Beaches.





Bournda Island

Bournda Island separates Bournda and North Tura beaches, and is located between Tathra and Merimbula. The island is joined to the mainland by a tombola beach, which can be submerged by the tide to form a real island. Bournda Island is covered in low dune shrub vegetation species that are perched on top of the rocky island. Access to the island is at low tide from Bournda or North Tura beaches. Bournda Island can also be accessed from the Bournda Lagoon via Headland Track.

This is a 'Return' style walk - retrace your steps back to the beginning when you are ready.

A list of paper topographical maps that cover this walk

[Wolumla](#) 1:25 000 Map Series

Bega 1:100 000 Map Series

Nearby outdoor and camping stores

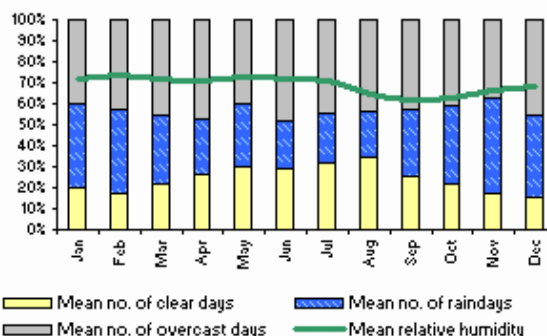
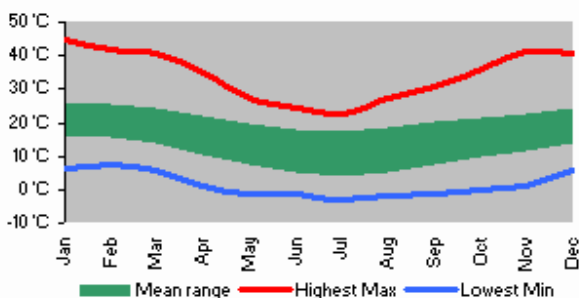
Camping Plus 6 Alice St Merimbula (02) 6495 2571

Gas Connection The Arthur Kaine Drv Pambula (02) 6495 7121

Barbeques Galore (Bega) 274 Carp St Bega (02) 6492 4054

Camping Outdoors Centre 43 Vulcan St Moruya (02) 4474 3081

Gone Fishin Cnr Ford & Queen Sts Moruya (02) 4474 4381





North Tura car park to Bournda Island

This space is available for advertising



Full colour Great photos



Give the joy of walking to a friend (and support wildwalks)

www.wildwalks.com/books.html



A walk for every body



Map Scale 1 km

