



The lookout at North Tura is just off the car park on a well placed platform, perched above the heath. From the end of this short walk you can see up and down the lonely beach, both to the north and south. Bournda Island can also be clearly seen to the north.

Bournda National Park

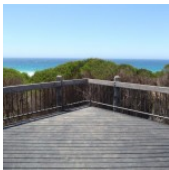
Length: 0 km
Time: 5 mins
Climb: 1 m
Style: Return
Rating: Path: Easy - Wheelchair accessible
Where: 11 km SSW of Tathra
Transport: car



Visit www.wildwalks.com for more info



Side trips and Alternate routes mentioned in these notes are not included in the tracks overall rating, distance or time estimate. The notes only describe the side trips and Alternate routes in one direction. Allow extra time for resting and exploring areas of interest. Please ensure you and your group are well prepared and equipped for all possible hazards and delays. The authors, staff and owners of wildwalks take care in preparing these notes but will not accept responsibility for any inconvenience, loss or injury sustained by using these notes or maps. Please take care and share your experience through the website. Please check park closures, weather information and Fire Danger Rating just before leaving for your walk. Walk maybe closed during Total Fire Ban. GPS for start and end of this walk: -36.8291,149.9346



Wildwalks

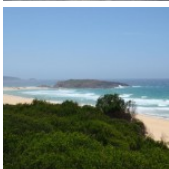


Download the free [Bushwalk Australia eMag](http://bushwalk.com)

The eMagazine is produced by the community at bushwalk.com and the Wildwalks team

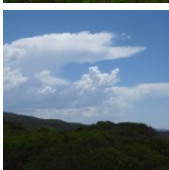
bushwalk.com Australia's most active bushwalking forum - Check it out.

Happy Reading. Matt :)



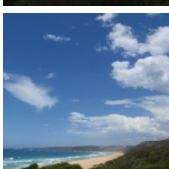
Int. Nth Tura Car Park and Lookout Trk to Nth Tura Lookout 0km

(From S) From the intersection, the walk follows the sign for 'Viewing Platform' out to the verandah lookout.



North Tura Lookout

North Tura Beach Lookout is located between Tathra and Merimbula in Bournda National Park. The lookout has stunning views over North Tura Beach, all the way south to Tura Headland and out to sea. The lookout is also a great viewing point for Turingal Head and Bournda Island. The lookout is easily accessed from North Tura car park and is wheelchair-accessible.



North Tura Beach

North Tura Beach is located north of Merimbula and Tura Heads. The beach is a beautiful expanse of sand of nearly 2.5km, stretching from Tura Heads to Bournda Island in the north. North Tura is an easterly-facing beach which is accessed by Widgeram Rd off the Sapphire Coast Drive.

This is a 'Return' style walk - retrace your steps back to the beginning when you are ready.



A list of paper topographical maps that cover this walk

Wolumla 1:25 000 Map Series

Bega 1:100 000 Map Series



Nearby outdoor and camping stores

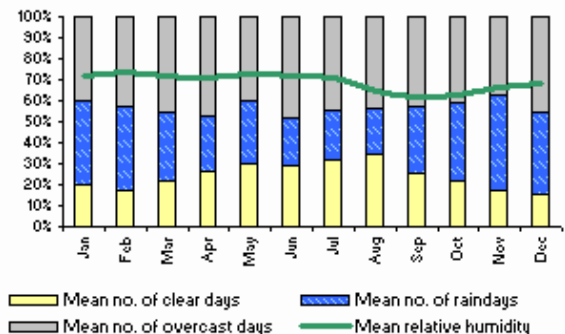
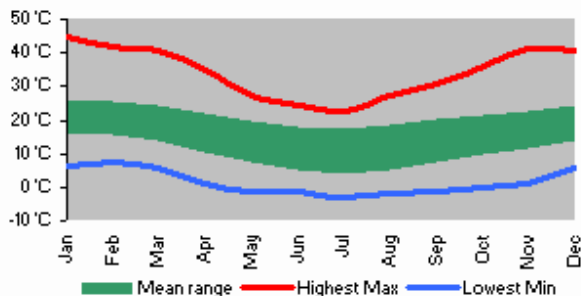
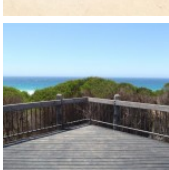
Camping Plus 6 Alice St Merimbula (02) 6495 2571

Gas Connection The Arthur Kaine Drv Pambula (02) 6495 7121

Barbeques Galore (Bega) 274 Carp St Bega (02) 6492 4054

Camping Outdoors Centre 43 Vulcan St Moruya (02) 4474 3081

Gone Fishin Cnr Ford & Queen Sts Moruya (02) 4474 4381



This space is available for advertising



Full colour
Great photos



Give the joy of walking to a friend
(and support wildwalks)

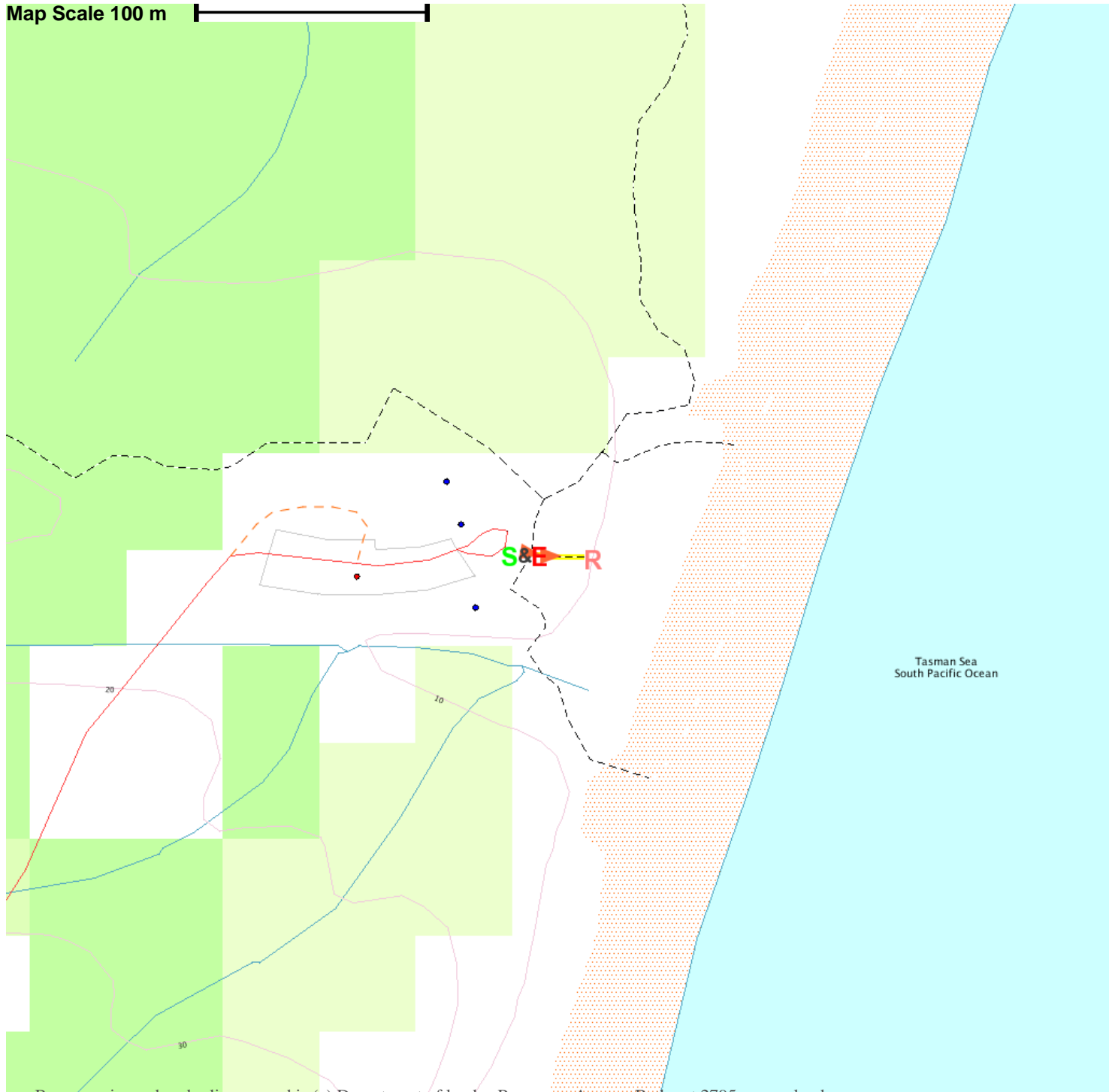
www.wildwalks.com/books.html



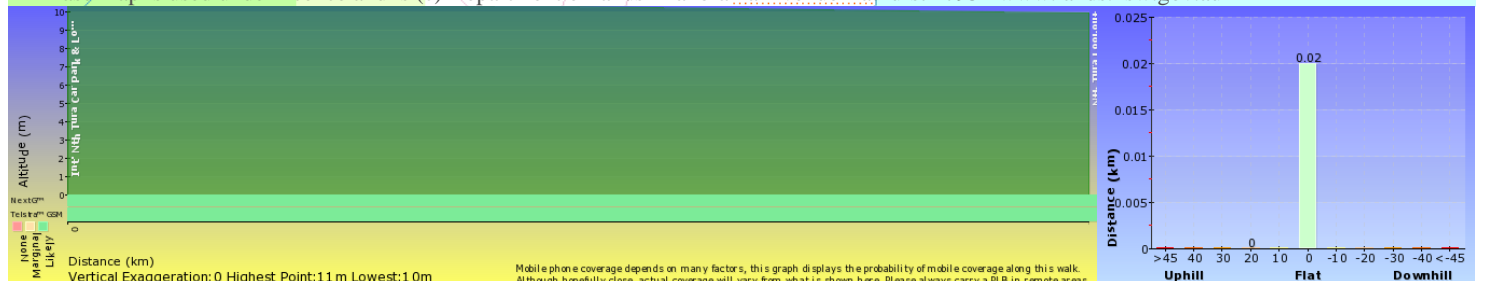
A walk for every body



Map Scale 100 m



Base map is used under licence and is (c) Department of lands Panorama Avenue Bathurst 2795 www.lands.nsw.gov.au



Mobile phone coverage depends on many factors, this graph displays the probability of mobile coverage along this walk. Although hopefully close, actual coverage will vary from what is shown here. Please always carry a PLB in remote areas.