



This walk from North Tura car park to Bournda Lagoon takes the inland route, away from the coast. The heath protects the walk as it winds through numerous vegetation types and then down across Sandy Beach Creek. The walk then follows the beautiful lagoon before heading up to the car park for the car shuffle or pick up.

Bournda National Park

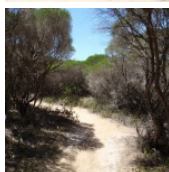
**Length:** 3.5 km  
**Time:** 1 hr 15 mins  
**Climb:** 83 m  
**Style:** One way  
**Rating:** Track: Hard  
**Where:** 7.1 km NNE of Merimbula  
**Transport:** car



Visit [www.wildwalks.com](http://www.wildwalks.com) for more info



*Side trips and Alternate routes mentioned in these notes are not included in the tracks overall rating, distance or time estimate. The notes only describe the side trips and Alternate routes in one direction. Allow extra time for resting and exploring areas of interest. Please ensure you and your group are well prepared and equipped for all possible hazards and delays. The authors, staff and owners of wildwalks take care in preparing these notes but will not accept responsibility for any inconvenience, loss or injury sustained by using these notes or maps. Please take care and share your experience through the website. Please check park closures, weather information and Fire Danger Rating just before leaving for your walk. Walk maybe closed during Total Fire Ban. GPS for start the start of this walk:-36.8291,149.9346 & for the end:-36.8156,149.9375*

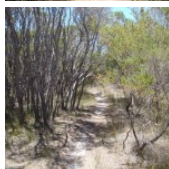


## Wildwalks

Download the free [Bushwalk Australia eMag](http://bushwalk.com)

The eMagazine is produced by the community at [bushwalk.com](http://bushwalk.com) and the Wildwalks team  
[Bushwalk.com](http://bushwalk.com) Australia's most active bushwalking forum - Check it out.

Happy Reading. Matt :)

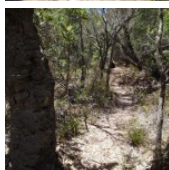


### Int. Nth Tura Car Park and Lookout Trk to Nth Tura Lookout 0km Optional Side Trip:

(From S) Turn left: From the intersection, the walk follows the sign for 'Viewing Platform' out to the verandah lookout. (Retrace your steps back to the main track, then turn right to continue along this walk.)

### North Tura Lookout

North Tura Beach Lookout is located between Tathra and Merimbula in Bournda National Park. The lookout has stunning views over North Tura Beach, all the way south to Tura Headland and out to sea. The lookout is also a great viewing point for Turingal Head and Bournda Island. The lookout is easily accessed from North Tura car park and is wheelchair-accessible.



### Int. Nth Tura Car Park and Lookout Trk to Int. Bournda Lagoon Lookout and Bournda Lagoon Trks 3.1km 45 mins

(From S) From the intersection, the walk follows the walking tracks sign along the fence line, with the car park on your left. The walk continues to the picnic table and signpost.

Turn left: From the intersection, this walk follows the 'Bournda Lagoon via Sandy Beach Creek' sign, passing picnic tables on the left. The track winds a little as it passes through open and closed heath areas, as well as a 'Walking Track' sign. The track continues, bordered by the heath, coming to a signposted intersection.

Turn right: From the intersection, this walk follows the sign to 'Bournda Lagoon' down the sandy track. The track is virtually fenced by the vegetation either side, and soon comes to a signposted intersection.

Turn left: From the intersection, this walk follows the sign 'Bournda Lagoon via Sandy Beach Ck' up the slight hill. The track tends right, heading through the bush to meet Sandy Beach Creek (below on the left). The track loosely follows this creek, then heads down some rocky steps to the arrow-marked bank of the creek.

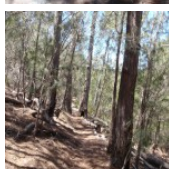
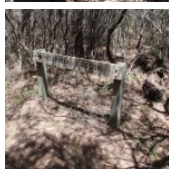
Veer left: From the creek bank, this walk crosses the creek. The track follows a rocky path over a small hill, then turns right along the waterline. The walk follows track markers along the creek bank, coming to an area with a number of seats, signposted as 'Study Area 2'. The track continues past this area to closely follow the waterline (on the right of the track) to 'Study Area 1'. The track passes these seats and continues above the lagoon (on the right) to an area of rainforest vegetation, which is signposted. The track here turns left, heading up to a cliffline and following this along to a set of stairs. The walk climbs the stairs to a signposted intersection.

Continue straight: From the intersection, this walk keeps the lagoon on the right and heads in the opposite direction to the 'Walking Track' sign. The track heads across the hill to turn right, down the hill to another 'Walking Track' sign near a rock shelf.

### Int. Bournda Lagoon Lookout and Bournda Lagoon Trks to Bournda Lagoon Lookout 0km 1 mins Optional Side Trip:

(From 3.1 km) Turn right: From the intersection, this walk follows the sign to the lookout. The track winds through the trees, up onto a rocky platform overlooking the lagoon and beach.

(Retrace your steps back to the main track, then continue straight to continue along this walk.)





## Bournda Lagoon Lookout

Bournda Lagoon lookout is a small unfenced rock platform perched above Bournda Lagoon, in Bournda National Park. The views to the south, over the lake, reveal how close the lagoon is to the beach. The angle of the lookout onto the water gives a look through the water to the bottom of the lagoon.



## Int. Bournda Lagoon Lookout and Bournda Lagoon Trks to Int. Bournda Lagoon Car park and Bournda Lagoon Trks 0.2km 5 mins

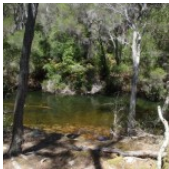
(From 3.1 km) Turn left: From the intersection, this walk heads down the hill, keeping the lagoon on the right of the track. The track heads down to wind along the flatter shoreline of the lagoon, coming to a signposted intersection with stairs on the left.

Veer right: From the intersection, the walk heads up the hill away from the lagoon, soon turning left. The track follows the shore of the lagoon (below on the left) to a signposted intersection.



## Bournda Lagoon

Bournda Lagoon has formed behind Bournda Beach, between Tathra and Merimbula in Bournda National Park. The lagoon is deep enough for swimming and is a popular spot for a freshwater swim. The lagoon is fed by Sandy Beach Creek, which has been silted up at the southernmost end of Bournda Beach. The lagoon supports a variety of environments, including a rainforest, on its shores. However, the lagoon is subject to environmental issues such as algal blooms. The lagoon can be accessed by bush track from Bournda Lagoon car park, at the end of Bournda Rd. [More info](#)



## Bournda Lagoon to Bournda Lagoon Car Park 0.1km 2 mins

(From 3.33 km) Turn left: From the lagoon, the walk heads away from the lagoon up the wooden stairs on the bushy hill. The track continues past a toilet block (on your right) and then a gate into the car park.



## Bournda Beach picnic area

Bournda Beach picnic area is found next to Bournda Lagoon car park, in Bournda National Park. The picnic area is shaded by the trees behind Bournda Beach, which is between Tathra and Merimbula. The picnic area has modest facilities with a few picnic tables, BBQ pit and a toilet nearby. The picnic area is a great place to eat lunch before heading down to Bournda Beach or Lagoon, which are only a stroll away through the bush.



## A list of paper topographical maps that cover this walk

[Wolumla](#) 1:25 000 Map Series

Bega 1:100 000 Map Series



## Nearby outdoor and camping stores

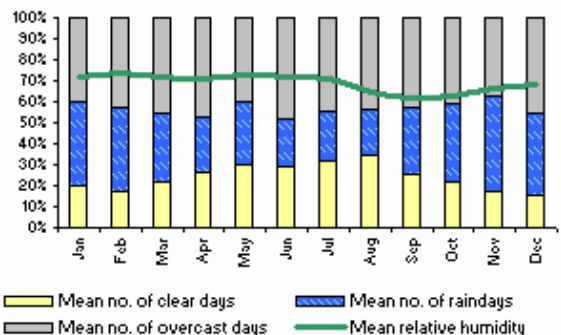
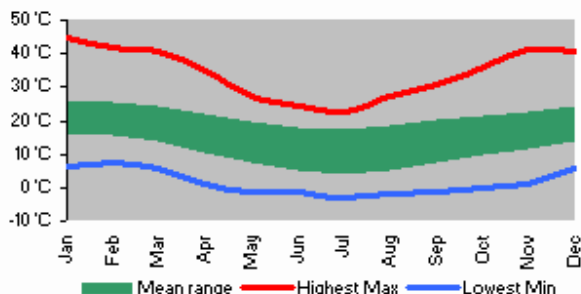
**Camping Plus** 6 Alice St Merimbula (02) 6495 2571

**Gas Connection The** Arthur Kaine Drv Pambula (02) 6495 7121

**Barbeques Galore (Bega)** 274 Carp St Bega (02) 6492 4054

**Camping Outdoors Centre** 43 Vulcan St Moruya (02) 4474 3081

**Gone Fishin** Cnr Ford & Queen Sts Moruya (02) 4474 4381





# North Tura Beach to Bournda Lagoon

This space is available for advertising



Full colour  
Great photos



Give the joy of walking to a friend  
(and support wildwalks)

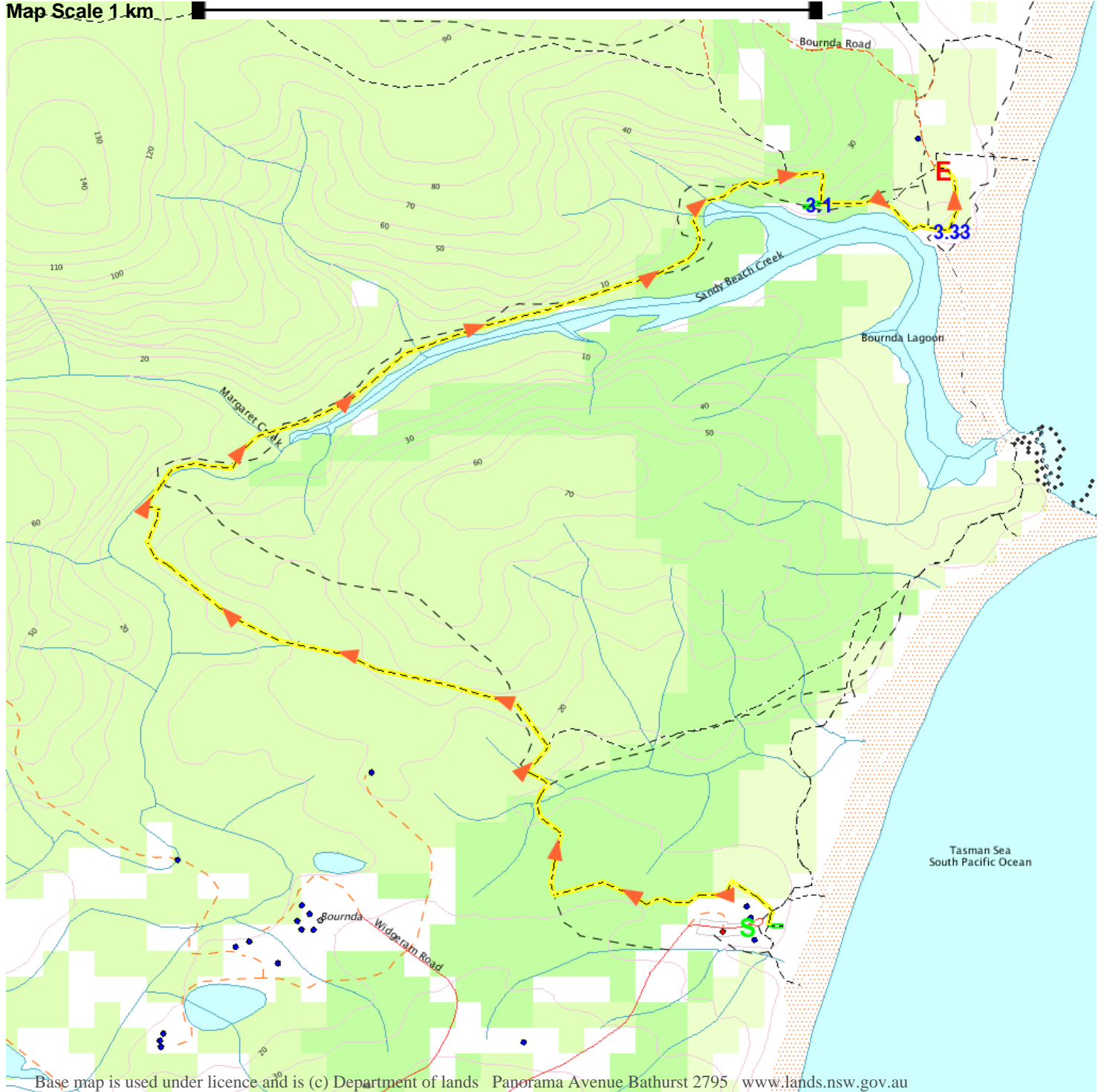
[www.wildwalks.com/books.html](http://www.wildwalks.com/books.html)



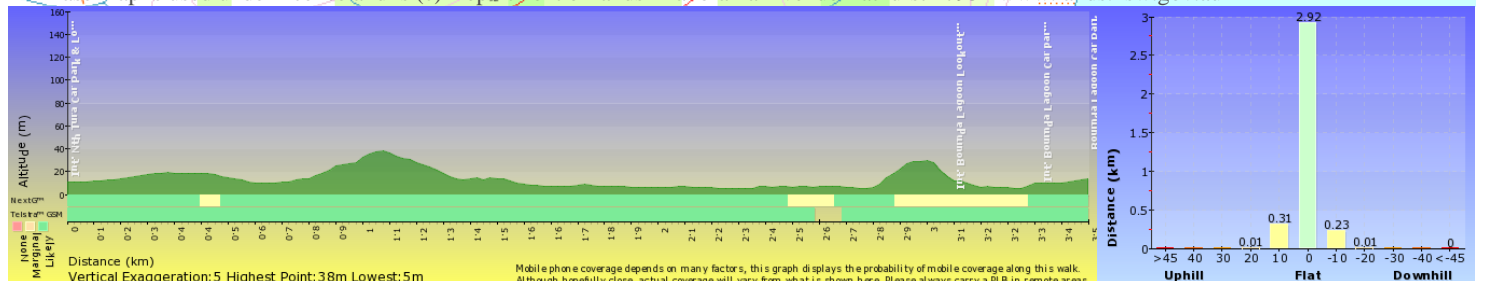
A walk for every body



Map Scale 1 km



Base map is used under licence and is (c) Department of lands Panorama Avenue Bathurst 2795 [www.lands.nsw.gov.au](http://www.lands.nsw.gov.au)



Mobile phone coverage depends on many factors, this graph displays the probability of mobile coverage along this walk. Although hopefully close, actual coverage will vary from what is shown here. Please always carry a PLB in remote areas.