



This walk explores the bushy interior section of Nielsen Park. On this walk, you will visit historic Greycliffe House and the Steele Point Gun Emplacement. The walk climbs over the Mount Trefle summit. At just over 40m above sea level, I suspect most walkers will not consider it much of a mountain, but an enjoyable walk all the same. Most of this walk follows concrete and sealed paths, and there are some great harbour views on the second half of this walk.

Length: 1.7 km
Time: 40 mins
Climb: 58 m
Style: Circuit
Rating: Walk: Easy
Where: 2.2 km NW of Vaucluse
Transport: bus car

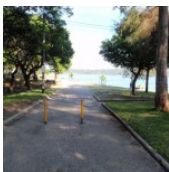


Sydney Harbour National Park

Visit www.wildwalks.com for more info



Side trips and Alternate routes mentioned in these notes are not included in the tracks overall rating, distance or time estimate. The notes only describe the side trips and Alternate routes in one direction. Allow extra time for resting and exploring areas of interest. Please ensure you and your group are well prepared and equipped for all possible hazards and delays. The authors, staff and owners of wildwalks take care in preparing these notes but will not accept responsibility for any inconvenience, loss or injury sustained by using these notes or maps. Please take care and share your experience through the website. Please check park closures, weather information and Fire Danger Rating just before leaving for your walk. Walk maybe closed during Total Fire Ban. GPS for start and end of this walk: -33.8508,151.2686



Wildwalks

Download the free [Bushwalk Australia eMag](http://bushwalk.com)

The eMagazine is produced by the community at bushwalk.com and the Wildwalks team
[Bushwalk.com](http://bushwalk.com) Australia's most active bushwalking forum - Check it out.

Happy Reading. Matt :)



Greycliffe Ave Car Park to Nielsen Park Cafe 0.2km 3 mins

(From S) From the lower end of the car park on Greycliffe Ave, this walk heads around the gate and along the sealed path (driveway) towards the water, passing the 'Sydney Harbour National Park' sign. After ~50m, the path leads to a four-way intersection just past the garbage bins.

Continue straight: From the intersection, this walk heads towards the water following the wide path. The path soon bends left (near the toilet block, on the right) and heads behind the beach, past the large information sign. Soon the path heads over the 'Dressing Pavilion' tunnel and, ~50m later, comes to the front of the Nielsen Park Cafe with its great water views.

Shark Bay

Located at the northern end of Nielsen Park, this beach faces north across Sydney Harbour. The sandy beach offers a swimming net enclosure, public toilets and change rooms, showers and is a popular place for people to simply relax. The beach is a focal point of Nielsen Park and also boasts a cafe. Protected by the harbour, there is no surf at this beach. The beach is not patrolled. This is a lovely spot, with natural shade not far from the beach.



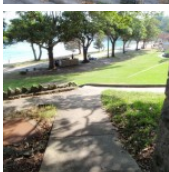
Nielsen Park Cafe

Open 8-5 daily, this historic cafe offers inside seating and a range of meals, including breakfast, sandwiches and hot food. This is one of a number of buildings in Nielsen Park which are available for functions. For further enquiries, contact 9337 1574. [More info](#)



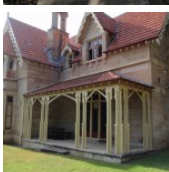
Nielsen Park Cafe to Western end of Shark Bay 0.1km 1 mins

(From 0.2 km) Continue straight: From Nielsen Park Cafe, this walk heads the short distance along the path in front of the cafe and behind the beach (keeping the water to your right). The path heads past the 'William Albert Notting' and 'Niels R.W. Nielsen, MLA' memorial (on your left) to soon find a four-way intersection (at the base of some steps) at the eastern end of Shark Bay.



Western end of Shark Bay to Greycliffe House 0.1km 3 mins

(From 0.28 km) Turn sharp left: From the intersection, this walk heads directly away from the water and up the path then steps, towards the grand building on top of the hill (not following the 'Hermitage Forest Walking track' sign). The path heads past the sandstone toilet block (on your right) and then at the top of the hill, the path bends to the right, in front of the 'Greycliffe House' information sign, coming to the driveway and a four-way intersection, in front of Greycliffe House.



Greycliffe House

Greycliffe House was completed in 1851 by John Reeve, son-in-law to the explorer W C Wentworth. The house was unoccupied between 1898 and 1911, when it was taken over by the State Government and used as a baby hospital and Tresillian mothercraft home in to the 1930s. Many of the plantings are from this era. Today, the building is home to the Sydney Harbour South office of the NSW National Parks and Wildlife Service, and is one of few remaining examples of gothic architecture in Sydney. [More info](#)



Greycliffe House to NP Workshop driveway 0.5km 10 mins

(From 0.37 km) Continue straight: From in front of Greycliffe House, this walk follows the 'Vaucluse Rd Via Mt Trefle' sign up the steps. The track soon bends left and heads high past Greycliffe House and a 'Surviving the City' information sign. The track then gently winds through the bush over Mt Trefle (the high point, but not very high), coming to a 'Greycliffe House' sign pointing back along the track, just near the back of the fenced workshop. Here the walk continues to generally follow the fence around the NP workshop. Heading along the side of the workshop, there is a view of some houses on Vaucluse Rd. At the front of the workshop, this walk turns left to follow the driveway down to find a 'T' intersection with a wider road (driveway).



NP Workshop driveway to Steele Point int 0.4km 5 mins

(From 0.92 km) Turn right: From the intersection, this walk heads west along the road (driveway) towards the water, keeping the fence and grassy clearing on your left. After ~30m, the walk leads over a speed bump as the road bends right. The road passes a large clearing (on the left) with harbour views, then about halfway through the next grove of trees, the road comes to a signposted intersection marked with a gap in the fence (down the hill on your left).
Continue straight: From the intersection, this walk heads north-west along the road as it continues to bend right, soon passing a clearing and a filtered view of the harbour on your left. The road then leads through a grove of trees for just over 100m, coming to another clearing and great view of Sydney Harbour. The walk continues along the road for another ~140m to find an intersection marked with a large 'Hermitage Foreshore Walk' sign (at the top of a set of stairs, on your left).



Steele Point Cottage

Why not make a weekend of it? Built in 1880, this one-time gunners' barracks has been restored as a one bedroom getaway. Managed by NPWS, you can hire this cottage (found on Steele Point) from \$330 per night (two night min). Great for a romantic weekend away for two. [More info](#)



Steele Point int to Degaussing range 0km 1 mins

(From 1.35 km) Continue straight: From the intersection, this walk heads along the road a short distance, keeping 'Steele Point Cottage' to your left. As the road bends sharply to the right, the walk then comes to an intersection just past the fenced degaussing range, near a sign pointing to 'Greycliffe House'.



Degaussing range

This degaussing range, found at Steele Point, was constructed in 1960 and is still operated by the Royal Australian Navy today. Degaussing is the process of removing (or at least reducing) a magnetic field. This degaussing range services four areas in the harbour (about 500m from the building), where metal ships passing over will be automatically de-magnetised. Why? Mostly to prevent the triggering of seabed mines. [More info](#)



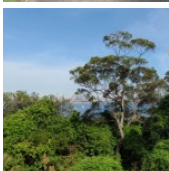
Degaussing range to Steele Point Gun Emplacement 0.1km 1 mins **Optional Side Trip:**

(From 1.37 km) Turn left: From the intersection, this walk heads up the driveway, keeping the degaussing range fence just to your left. At the end of the driveway, the walk heads across the grass to find the Steele Point Gun Emplacement just behind the degaussing range. Beware of the unfenced drop into the emplacement.
(Retrace your steps back to the main track, then turn sharp left to continue along this walk.)



Steele Point Gun Emplacement

Construction of this initial emplacement took about three years and was completed in 1874. The sandstone pit once had a steel dome (to protect from shells) and was part of a series of gun emplacements protecting from the threat of invasion. Today, you will find a series of tall sandstone channels and the circular pit where the main gun once stood. A set of un-railed steps leads into the pit - please take care in the area, as the pit is not fenced.





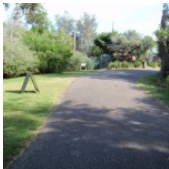
Degaussing range to Greycliffe Ave Car Park 0.4km 5 mins

(From 1.37 km) Veer left: From the degaussing range, this walk heads down the footpath and steps, towards the beach. The path leads past an open grassy clearing (on your right) and ignores a path (on the right, leading to the toilet). At the bottom of the stairs, the path comes to a four-way intersection at the western end of Shark Bay.

Continue straight: From the intersection, this walk follows the flat, wide path, keeping the beach and water to the left. The path soon passes the 'William Albert Notting' and 'Niels R.W. Nielsen, MLA' memorial (on your right) and, not much further along, comes to the front of Nielsen Park Cafe.

Continue straight: From Nielsen Park Cafe, this walk heads along the path, keeping the beach and water to your left. After ~50m, the path heads over the 'Dressing Pavilion' tunnel and soon passes a large information sign. At the sign, the path bends right and then comes to a four-way intersection near a large number of garbage bins.

Continue straight: From the intersection, this walk follows the wide sealed path (driveway) directly away from the water, past the garbage bins. The path soon leads past the 'Sydney Harbour National Park' sign and through the gate to Greycliffe Ave.



A list of paper topographical maps that cover this walk

[Sydney Heads](#) 1:25 000 Map Series

Sydney 1:100 000 Map Series

Nearby outdoor and camping stores

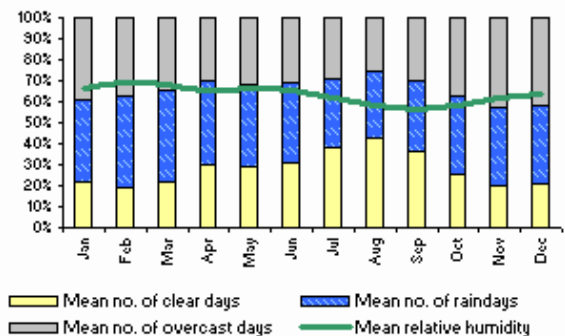
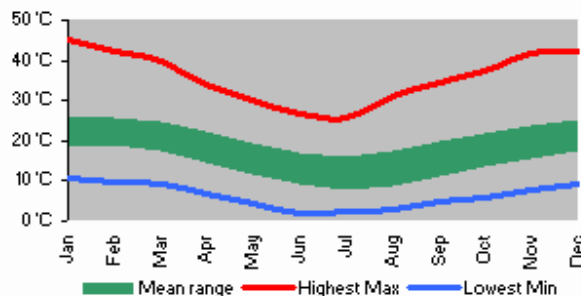
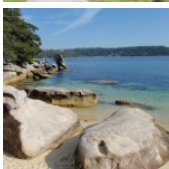
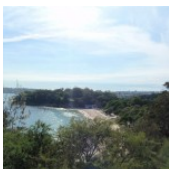
Outdoor Equipment 60 Spring St Bondi Junction (02) 9389 8122

Inski 46 York St Sydney (02) 9233 3200

Mitchells Adventure 81 York St Sydney (02) 9299 6321

Venus Repair Workshop Suite 36a 104 Bathurst St Sydney (02) 9267 0706

Wildsports Upper Floor 447 Kent St Sydney (02) 9264 2095



This space is available for advertising



Full colour
Great photos



Give the joy of walking to a friend
(and support wildwalks)

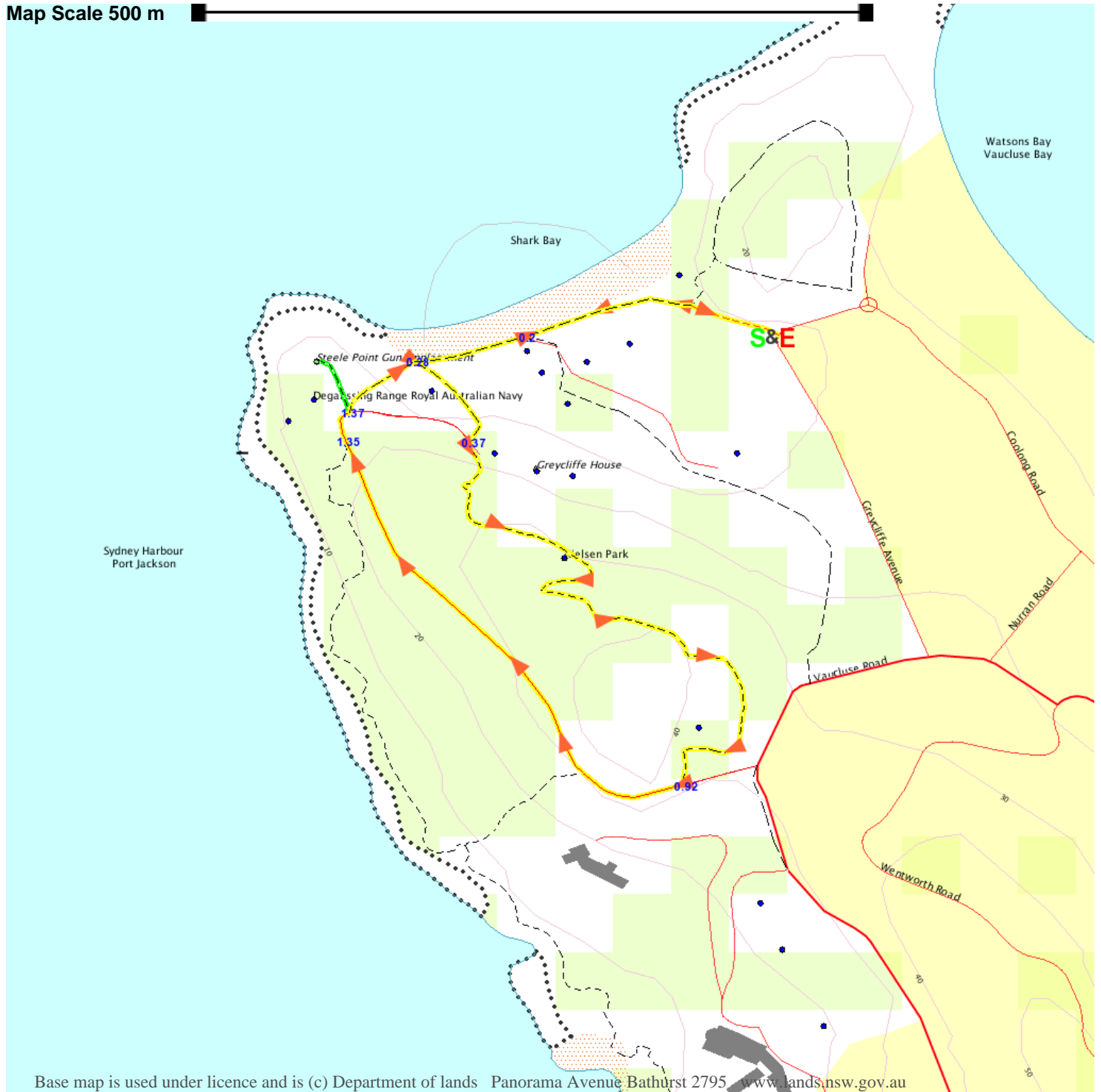
www.wildwalks.com/books.html



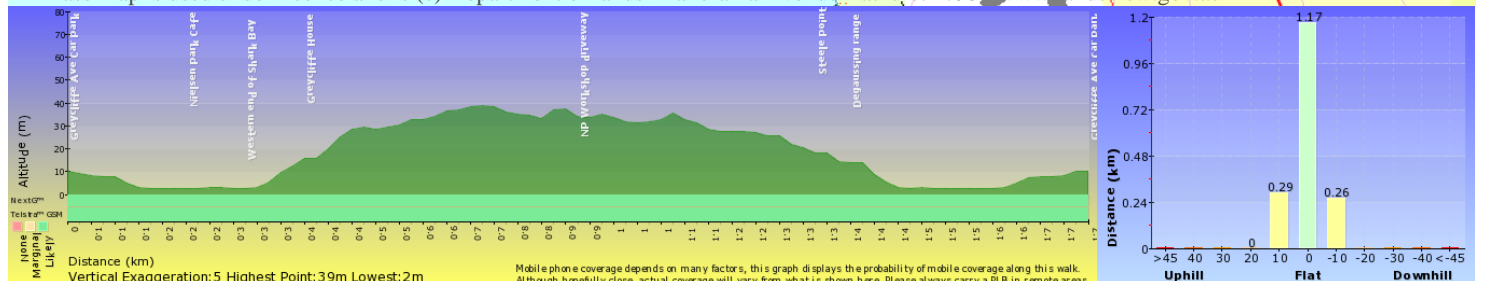
A walk for every body



Map Scale 500 m



Base map is used under licence and is (c) Department of lands Panorama Avenue Bathurst 2795 www.lands.nsw.gov.au



Mobile phone coverage depends on many factors, this graph displays the probability of mobile coverage along this walk. Although hopefully close, actual coverage will vary from what is shown here. Please always carry a PLB in remote areas.