



Boulder Bay is a fantastic secluded beach backed by many smooth, round rocks (hence the name). The walk is dotted with views of the coast, and the bushland itself is pleasant to walk through. The starting point at Kianiny Bay has great picnic facilities and play equipment to entertain the young, or young at heart.

Bournda National Park

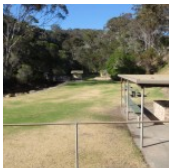
Length: 3.5 km
Time: 2 hrs
Climb: 200 m
Style: Return
Rating: Track: Hard
Where: 1.4 km ESE of Tathra
Transport: car



Visit www.wildwalks.com for more info



Side trips and Alternate routes mentioned in these notes are not included in the tracks overall rating, distance or time estimate. The notes only describe the side trips and Alternate routes in one direction. Allow extra time for resting and exploring areas of interest. Please ensure you and your group are well prepared and equipped for all possible hazards and delays. The authors, staff and owners of wildwalks take care in preparing these notes but will not accept responsibility for any inconvenience, loss or injury sustained by using these notes or maps. Please take care and share your experience through the website. Please check park closures, weather information and Fire Danger Rating just before leaving for your walk. Walk maybe closed during Total Fire Ban. GPS for start and end of this walk: -36.7368,149.9819

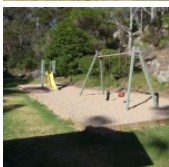


Wildwalks

Download the free Bushwalk Australia eMag

The eMagazine is produced by the community at bushwalk.com and the Wildwalks team
Bushwalk.com Australia's most active bushwalking forum - Check it out.

Happy Reading. Matt :)

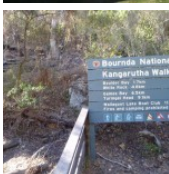


Kianinny Boat Ramp to Kianinny Park 0.1km 1 mins

(From S) From the car park, this walk keeps the water on the left as it heads down the stairs to the grassed area of the park. The track then continues along the creek, below on the left, to a bridge and information sign.

Kianinny Bay picnic area

Kianinny Bay picnic area is found at the end of Davidson St in Tathra. The picnic area leads off the boat ramp's parking area. Kianinny Bay picnic area has an electric BBQ hot plate underneath a shelter. The picnic area also boasts a number of tables, grass clearing, toilets and a playground. Kianinny Bay picnic area is at one end of the Kangarutha Track and, with the large car park at the bay, this makes it quite convenient for car shuffles.



Kianinny Park to Kianinny Bay Lookout 0.2km 5 mins

(From 0.06 km) Veer left: From the information sign, this walk crosses the bridge and heads up the hill. The walk soon leads up the logged steps to a rock platform at the top. On the ocean side of the rock platform is a great lookout over Kianinny Bay and the coast.



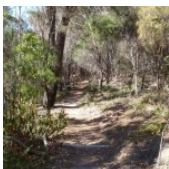
Kianinny Bay Lookout

Kianinny Bay Lookout is perched on the hill, just south of Kianinny Bay. The lookout is an unfenced rock platform which has two white nautical markers placed on it. The lookout views the passage of boats into Kianinny Bay as they avoid the rocks near the northern headland. The lookout can be accessed from Kianinny Bay car park in Tathra, using the Kangarutha Track.



Kianinny Bay Lookout to Int. Kangarutha and Wild Horse Bay Lookout Trks 0.5km 10 mins

(From 0.21 km) Turn right: From the intersection, this walk keeps the ocean to the left as it crosses straight over the rock platform to a gap in the heath. The track passes down through the heath to meander and undulate for some time. The track continues past a cleared area on the right before turning into a gully. The track winds out of the gully tending right, up the hill, to an area of low heath with a faint track on the left.



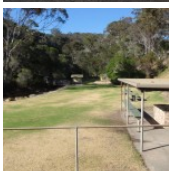
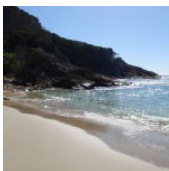
Int. Kangarutha and Wild Horse Bay Lookout Trks to Wild Horse Bay Lookout 0.2km 3 mins **Optional Side Trip:**

(From 0.76 km) Turn left: From the intersection, the walk follows the bush track down the hill, towards the coast. The track winds down through areas of low heath and taller melaleuca trees. The track then bends to the right, in a clearing with views of the ocean, keeping the rocks on the left and comes to a small clearing overlooking the rocky coastline. (Retrace your steps back to the main track, then turn left to continue along this walk.)



White Horse Bay Lookout

Wild Horse Bay Lookout, in Bournda National Park, is located south of Tathra. The lookout offers views out across the South Pacific Ocean and the waves crashing into Wild Horse Bay. The bay is surrounded by rock platforms and cliffs. The lookout is accessed by a side trip from the Kangarutha Track.



Int. Kangarutha and Wild Horse Bay Lookout Trks to Boulder Bay 1km 15 mins

(From 0.76 km) Veer right: From the intersection, this walk heads up the hill away from the ocean. The track winds along an area of low heath to soon turn left into taller heath. The track winds and undulates through the cleared passage in the heathland, passing through a few gullies. The walk crosses a large creek with stairs leading down and away from a rock platform. The track then continues up and around the hillside through an area of more open vegetation. This walk then leads down the hill to an arrow post, marking the track on the right.

Continue straight: From the intersection, this walk heads down the hill along the track, soon coming into view of the beach. The walk winds down the stairs onto a rock which leads onto the beach. This walk continues to the middle of the beach.

Boulder Bay

Boulder Bay is located on the Kangarutha Track, south of Tathra, within Bournda National Park. The bay is sided by two rocky coast lines that funnel the water to the sandy beach. The sand of Boulder Bay is lower on the beach and the area behind this is covered in rounded rocks in a variety of sizes. Boulder Bay Creek runs into the bay but is usually a dry creek bed at the back of the beach. Access to Boulder Bay is by the Kangarutha Track.

This is a 'Return' style walk - retrace your steps back to the beginning when you are ready.

A list of paper topographical maps that cover this walk

[Bega](#) 1:25 000 Map Series

Bega 1:100 000 Map Series

Nearby outdoor and camping stores

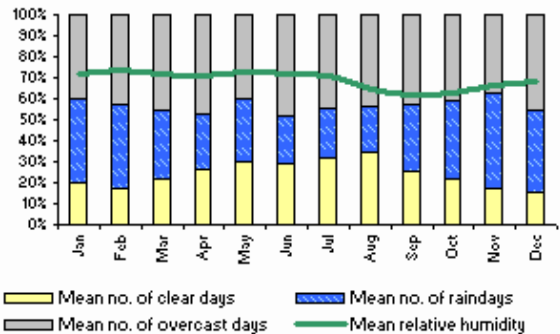
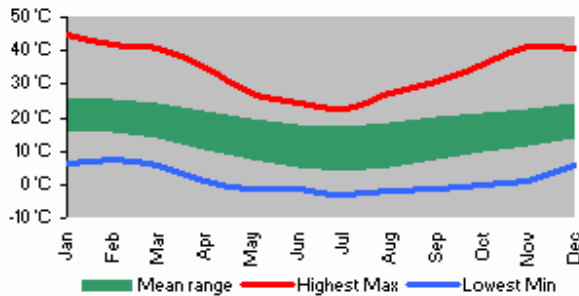
Barbeques Galore (Bega) 274 Carp St Bega (02) 6492 4054

Camping Plus 6 Alice St Merimbula (02) 6495 2571

Gas Connection The Arthur Kaine Drv Pambula (02) 6495 7121

Camping Outdoors Centre 43 Vulcan St Moruya (02) 4474 3081

Gone Fishin Cnr Ford & Queen Sts Moruya (02) 4474 4381



This space is available for advertising



Full colour
Great photos



Give the joy of walking to a friend
(and support wildwalks)

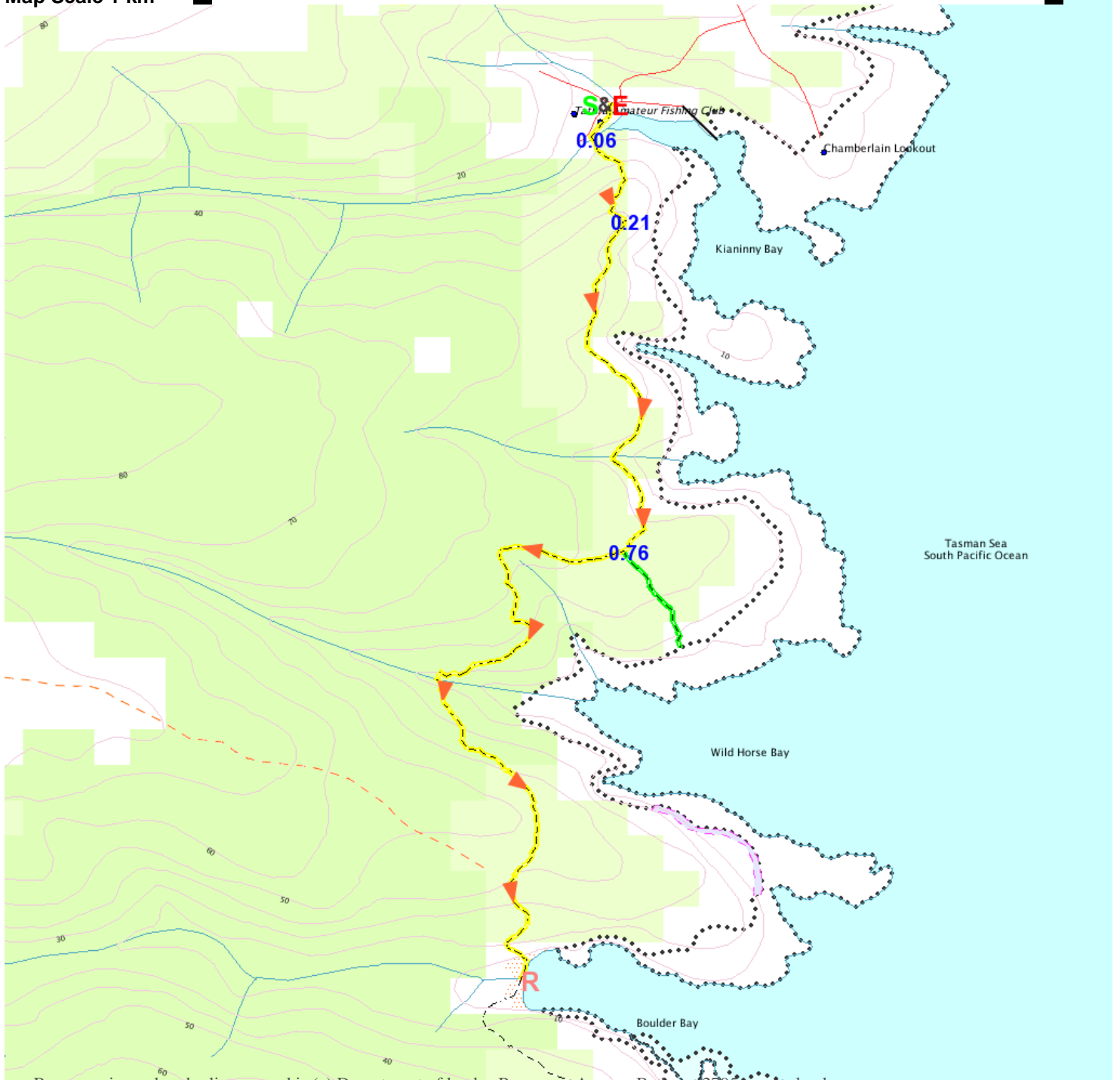
www.wildwalks.com/books.html



A walk for every body



Map Scale 1 km



Base map is used under licence and is (c) Department of lands Panorama Avenue Bathurst 2795 www.lands.nsw.gov.au

