



This walk extends the Kangarutha Track, starting from Kianiny Bay in Tathra and following the coast to Hobart Beach camping area. This coastal walk is dotted with many secluded beaches and bays, great places to watch the waves roll in, or to get the toes wet. The walk along the sandy Wallagoot Beach is a nice way to finish, before arriving at Hobart Beach camping area.

Bournda National Park

**Length:** 11.5 km  
**Time:** 4 hrs 30 mins  
**Climb:** 476 m  
**Style:** One way  
**Rating:** Track: Hard  
**Where:** 1.4 km ESE of Tathra  
**Transport:** car



Visit [www.wildwalks.com](http://www.wildwalks.com) for more info



*Side trips and Alternate routes mentioned in these notes are not included in the tracks overall rating, distance or time estimate. The notes only describe the side trips and Alternate routes in one direction. Allow extra time for resting and exploring areas of interest. Please ensure you and your group are well prepared and equipped for all possible hazards and delays. The authors, staff and owners of wildwalks take care in preparing these notes but will not accept responsibility for any inconvenience, loss or injury sustained by using these notes or maps. Please take care and share your experience through the website. Please check park closures, weather information and Fire Danger Rating just before leaving for your walk. Walk maybe closed during Total Fire Ban. GPS for start the start of this walk:-36.7368,149.9819 & for the end:-36.797,149.94*



**National Parks Association of NSW - Learn more about the NPA** [www.npansw.org.au](http://www.npansw.org.au)

Walk with a club - Enjoy bushwalking and make new friends (community announcement)

The NPA is more than just a bushwalking club. We are a conservation group that helps protect natural places. As a member you can join any of our 1000 guided walks each year and enjoy our quarterly Magazine 'Nature NSW'. Membership fee is just \$65 per year, concession fee also available. [Learn More...](#)

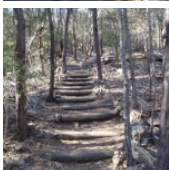


**Kianinny Boat Ramp to Kianinny Park** 0.1km 1 mins

(From S) From the car park, this walk keeps the water on the left as it heads down the stairs to the grassed area of the park. The track then continues along the creek, below on the left, to a bridge and information sign.

**Kianinny Bay picnic area**

Kianinny Bay picnic area is found at the end of Davidson St in Tathra. The picnic area leads off the boat ramp's parking area. Kianinny Bay picnic area has an electric BBQ hot plate underneath a shelter. The picnic area also boasts a number of tables, grass clearing, toilets and a playground. Kianinny Bay picnic area is at one end of the Kangarutha Track and, with the large car park at the bay, this makes it quite convenient for car shuffles.

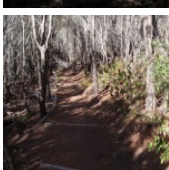
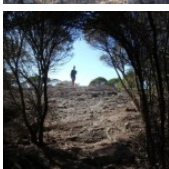


**Kianinny Park to Kianinny Bay Lookout** 0.2km 5 mins

(From 0.06 km) Veer left: From the information sign, this walk crosses the bridge and heads up the hill. The walk soon leads up the logged steps to a rock platform at the top. On the ocean side of the rock platform is a great lookout over Kianinny Bay and the coast.

**Kianinny Bay Lookout**

Kianinny Bay Lookout is perched on the hill, just south of Kianinny Bay. The lookout is an unfenced rock platform which has two white nautical markers placed on it. The lookout views the passage of boats into Kianinny Bay as they avoid the rocks near the northern headland. The lookout can be accessed from Kianinny Bay car park in Tathra, using the Kangarutha Track.

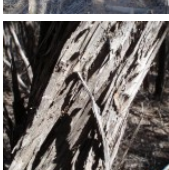
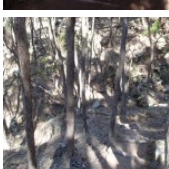


**Kianinny Bay Lookout to Boulder Bay** 1.5km 25 mins

(From 0.21 km) Turn right: From the intersection, this walk keeps the ocean to the left as it crosses straight over the rock platform to a gap in the heath. The track passes down through the heath to meander and undulate for some time. The track continues past a cleared area on the right before turning into a gully. The track winds out of the gully tending right, up the hill, to an area of low heath with a faint track on the left.

Veer right: From the intersection, this walk heads up the hill away from the ocean. The track winds along an area of low heath to soon turn left into taller heath. The track winds and undulates through the cleared passage in the heathland, passing through a few gullies. The walk crosses a large creek with stairs leading down and away from a rock platform. The track then continues up and around the hillside through an area of more open vegetation. This walk then leads down the hill to an arrow post, marking the track on the right.

Continue straight: From the intersection, this walk heads down the hill along the track, soon coming into view of the beach. The walk winds down the stairs onto a rock which leads onto the beach. This walk continues to the middle of the beach.





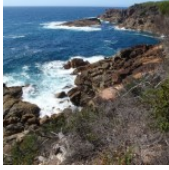
## Boulder Bay

Boulder Bay is located on the Kangarutha Track, south of Tathra, within Bournda National Park. The bay is sided by two rocky coast lines that funnel the water to the sandy beach. The sand of Boulder Bay is lower on the beach and the area behind this is covered in rounded rocks in a variety of sizes. Boulder Bay Creek runs into the bay but is usually a dry creek bed at the back of the beach. Access to Boulder Bay is by the Kangarutha Track.



## Boulder Bay to Int Kangarutha Trk Nth and White Rock Rd 2.8km 1 Hrs

(From 1.73 km) Continue straight: From the middle of the beach, the walk heads towards the track marker near a tree on the beach, keeping the water to the left. The walk then follows the arrow along a bush track, away from the beach and winds through areas of heath and open bush. After passing a small trail to the left (which accesses the cliffs through the heath), the track continues, keeping the ocean to the left, and arrives at a signposted intersection with an overgrown service trail.



Continue straight: From the intersection, the walk follows the arrow down the steps, towards the ocean. The track opens out onto the coast and arrives at a white post on the rock platform beside the bay.



Turn right: From the first white post, the walk heads towards the next visible white post, keeping the ocean on the left. The track meanders along the rocky platform then tends away from the bay, turning right, up the hill. As it climbs up the hill, the walk passes an ant mound, to the left, and soon heads over a very rocky area, following the most worn and compacted route through the rocks. The track continues, with the ocean on the left, and follows a track marker down the hill, arriving at the middle of a rocky bay.



Continue straight: From the middle of the rocky bay, the walk follows rock-cut steps up onto the rocky headland, keeping the water on the left. The track then winds its way over the rocks, passing a lookout on the left, and dropping into a U-shaped rock valley (which points out to sea).



Continue straight: From the U-shaped rock valley, the walk climbs the hill, keeping the ocean on the left. The track continues for some time passing many great views of the coast. After passing through more areas of open and closed heath, the track bends right and goes up some stairs to an intersection with a service trail.

## Int. Kangarutha Trk Nth and White Rock Rd to White Rock Nth route 0.2km 5 mins **Optional Side Trip:**

(From 4.57 km) Turn left : From the intersection, this walk heads down the hill towards the ocean. The track soon tends right, down to a cul-de-sac in the management trail.

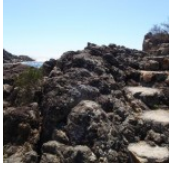
Continue straight: On the side of the car park where the road leads up the hill, this walk follows track around the cliff tops, keeping the small bay below on the left. The track heads around the small hill (above on the right), leading to a point on the white rock which overlooks the sea and surrounding coast.

(Retrace your steps back to the main track, then continue straight to continue along this walk.)



## White Rock

White Rock, Bournda National Park, as the name suggests, is an area of white coloured rocks, south of Tathra. The rocks form the headland with spectacular views of the coastline both to the North and South, and across the South Pacific Ocean. White Rock car park is backed by an old quarry, which formed the amphitheatre of rock behind it. White Rock can be accessed by White Rock Rd, off the Snowy Mountains Highway.



## Int. Kangarutha Trk Nth and White Rock Rd to Int. White Rock Rd and Kangarutha Trk Sth 0km 1 mins

(From 4.57 km) Veer right: From the intersection, this walk heads up the hill to a bend in the management trail, where a small green track marker indicates the intersection.



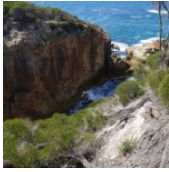
## Int. White Rock Rd and Kangarutha Trk Sth to Games Bay 1.6km 25 mins

(From 4.6 km) Veer left: From the intersection, this walk heads south-west, away from the management trail and up the slight hill following the track marker. The track meanders for a short time to tend left down the hill, towards the ocean. Here, the track meets a large black termite mound and turns right. The walk passes a number of good views, and a track on the left (which leads down to the ocean). This walk continues along the hillside, and soon tends to the right, heading through the heath to enter an area of trees. The track then heads down the hill into a rocky bay.

Turn right: From the bay, this walk heads up the hill, keeping the ocean on the left of the track. The walk winds up the steps to then meander along the hillside, coming to a track marker at an intersection.

Veer left: From the intersection, this walk heads down the stairs following the track marker arrow. The track very quickly winds down into the sandy creek bed behind Games Bay. A signpost marking 'Games Bay' is hidden in the low bush at the back of the beach area.





## Games Bay

Games Bay, Bournda National Park, is located along the Kangarutha Track, south of Tathra. The bay is formed by two rocky sides, and backed by a sandy beach. Games Bay Creek runs through the beach out to sea, but flows intermittently. The bay is named after Mr Games, a settler who cleared and used the surrounding area of the bay for dairy farming. Mr Games also made a track from Games Bay to White Rock. The bay is backed by a small fireplace with driftwood seats around it.



## Games Bay to Int. Wallagoot Gap and Kangarutha Trks 2.4km 45 mins

(From 6.21 km) Turn right: From the sandy creek bed, this walk heads up the hill out of Games Bay, keeping the ocean to the left of the track. The walk keeps Games Bay just below on the left for a short time, as it winds up the hill and then tends right with the hill, following posts marking the track. The walk passes many access tracks down to the side of Games Bay. This walk leads through heath and banksia, with the posts still leading the way through large clear areas and areas of thick vegetation. The track continues for quite some time, winding with the ocean far below to the left until coming to the signposted intersection just before the timber platform overlooking Wallagoot Gap.



## Int. Wallagoot Gap and Kangarutha Trks to Wallagoot Gap 0.1km 2 mins **Optional Side Trip:**

(From 8.61 km) Turn left: From the intersection, the walk heads to the timber platform then down the timber steps onto Wallagoot Gap Beach.

(Retrace your steps back to the main track, then turn sharp left to continue along this walk.)



## Wallagoot Gap

Wallagoot Gap is situated south of Tathra, facing east out onto the South Pacific Ocean. The gap is created by two headlands that protect the main beach from the wind. A second beach can be found around the corner of Wallagoot Gap, by following the right-hand side wall. Wallagoot Gap is an excellent place for a swim or a play in the sand. The gap can be accessed from Wallagoot Beach car park at the end of Wallagoot Lake Rd or the Kangarutha Track.



## Int. Wallagoot Gap and Kangarutha Trks to Wallagoot Beach North 0.3km 5 mins

(From 8.61 km) Veer left: From the intersection, this walk heads down the hill, keeping the ocean and the wooden platform to the left. The track tends right, down the hill to reveal a great view over Wallagoot Beach. The walk then heads down the hill and a set of stairs onto the beach.



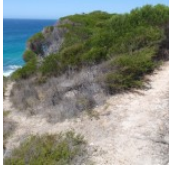
## Wallagoot Beach North to Wallagoot Beach 1.5km 25 mins

(From 8.89 km) Veer left: From the intersection, this walk heads down the beach, keeping the ocean to the left and the lake to the right. After some time, this walk comes to a set of sand ladder steps rising up the dunes. (This track may be impassable during high water, in which case, walkers can follow the hillside around on to the beach.)



## Wallagoot Beach

Wallagoot Beach, is located east of Wallagoot Lake in Bournda National Park, between Tathra and Merimbula. The beach is a large expanse of white sand, with surf conditions created by its south easterly aspect. The beach's northern end sometimes floods, due to Wallagoot Lake breaking through the beach's sand barrier. Alternative access (instead of Wallagoot Lake Rd) is from Bournda Rd, through Hobart Beach camping area.



## Wallagoot Beach to Ocean beaches carpark Trk 0.3km 5 mins

(From 10.42 km) Turn right: From the intersection, this walk heads away from the beach and up the erosion control stairs. The walk then heads down the stairs onto a sandy clear trail which winds through the bush. The track soon meets a signposted intersection.



## Ocean beaches carpark Trk to Wallagoot Lake Shore (Hobart Beach) 0.4km 5 mins

(From 10.72 km) Turn left: From the intersection, this walk follows the sign to the 'Parking Area' along the sandy track, towards the distant hills. The walk winds through the melaleuca, some of which are on the track. The soon comes to a timber boardwalk and a three way intersection with a 'Ocean Beaches' sign pointing back along the track.

From the intersection, this walk follows the 'Hobart Beach camp' sign off the end of the board walk to the come to a car park a short distance later. At the carpark the walk turns right to find a signposted intersection next to the picnic table.

Turn right: From the intersection, this walk follows the arrow on the sign to 'Wallagoot Lake', away from the car park and picnic table. The track tends right, down the hill, for approximately 50m to an intersection on the shore of Wallagoot Lake.



## Wallagoot Lake (Lagoon)

Wallagoot Lake, Bournda National Park, is located between Tathra and Merimbula on the Sapphire Coast Drive. Wallagoot Lake is a large expanse of water, although it is only two to three metres deep. The lake's catchment is found predominantly within Bournda National Park, the main tributary being Moncks Creek. The lake is blocked from the ocean by sand dunes on the eastern end - these dunes are broken intermittently, connecting the lake with the sea. Wallagoot Lake is home to many bird species including Black Swans and a threatened Tern.

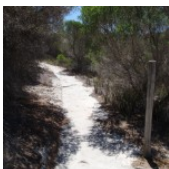


The lake is a popular spot for picnics and other recreation. Hobart Beach camping area lies on the southern shore of the lake, and on the northern edge lies the Wallagoot Lake Boat Club, with its parking, and also a picnic area, providing plenty of opportunities to enjoy the lake. Wallagoot Lake can be accessed by Wallagoot Lake Rd off the Sapphire Coast Drive. [More info](#)



## Hobart Beach

Hobart Beach is located on the southern shores of Wallagoot Lake, between Tathra and Merimbula. Hobart Beach extends from the sand dunes to Scotts Bay, on Wallagoot Lake. The beach is a thin slice of white sand between the treeline and the lake, and provides plenty of opportunity to go for a swim and enjoy the water. Access to the beach is through Hobart Beach camping area, off Bournda Rd in Bournda National Park.



## Wallagoot Lake Shore (Hobart Beach) to Hobart Beach large shelter 0.3km 5 mins

(From 11.15 km) Turn sharp left: From the intersection, the walk heads away from Wallagoot Lake, keeping it a bit to the right for a short time, passing a post with a red reflective marker. The track tends right, away from the lake and the beach, to come into view of a clearing, the campsite, on the left. The track continues to an area with cut logs on the ground. The walk passes these logs, continuing to the main road, to the right of large triangular shelter where there is a signpost.



## Hobart Beach campground

This is a well-established campsite close to the beach and lake. There are garbage and recycling bins. Each camping space is well-defined and there is a large covered common area. The camp surrounds the stone and timber toilet and laundry facility.

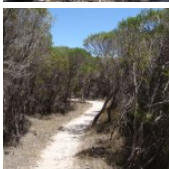


## A list of paper topographical maps that cover this walk

[Wolumla](#) 1:25 000 Map Series

[Bega](#) 1:25 000 Map Series

Bega 1:100 000 Map Series



## Nearby outdoor and camping stores

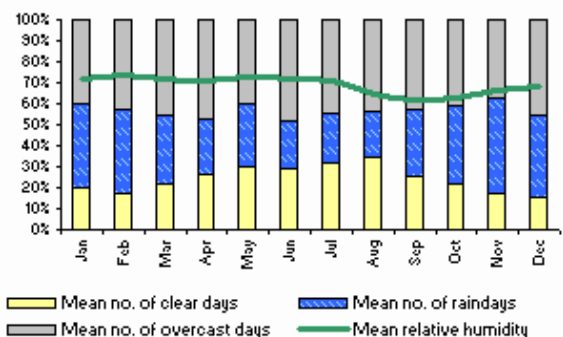
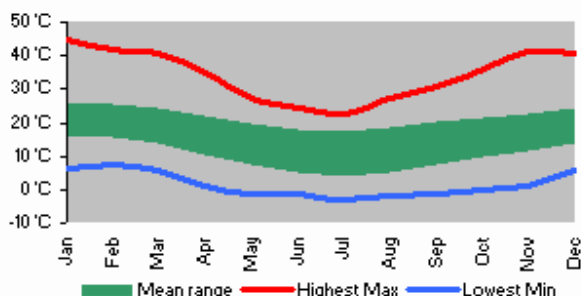
**Barbeques Galore (Bega)** 274 Carp St Bega (02) 6492 4054

**Camping Plus** 6 Alice St Merimbula (02) 6495 2571

**Gas Connection The** Arthur Kaine Drv Pambula (02) 6495 7121

**Camping Outdoors Centre** 43 Vulcan St Moruya (02) 4474 3081

**Gone Fishin** Cnr Ford & Queen Sts Moruya (02) 4474 4381





# Kangarutha Track to Hobart Beach

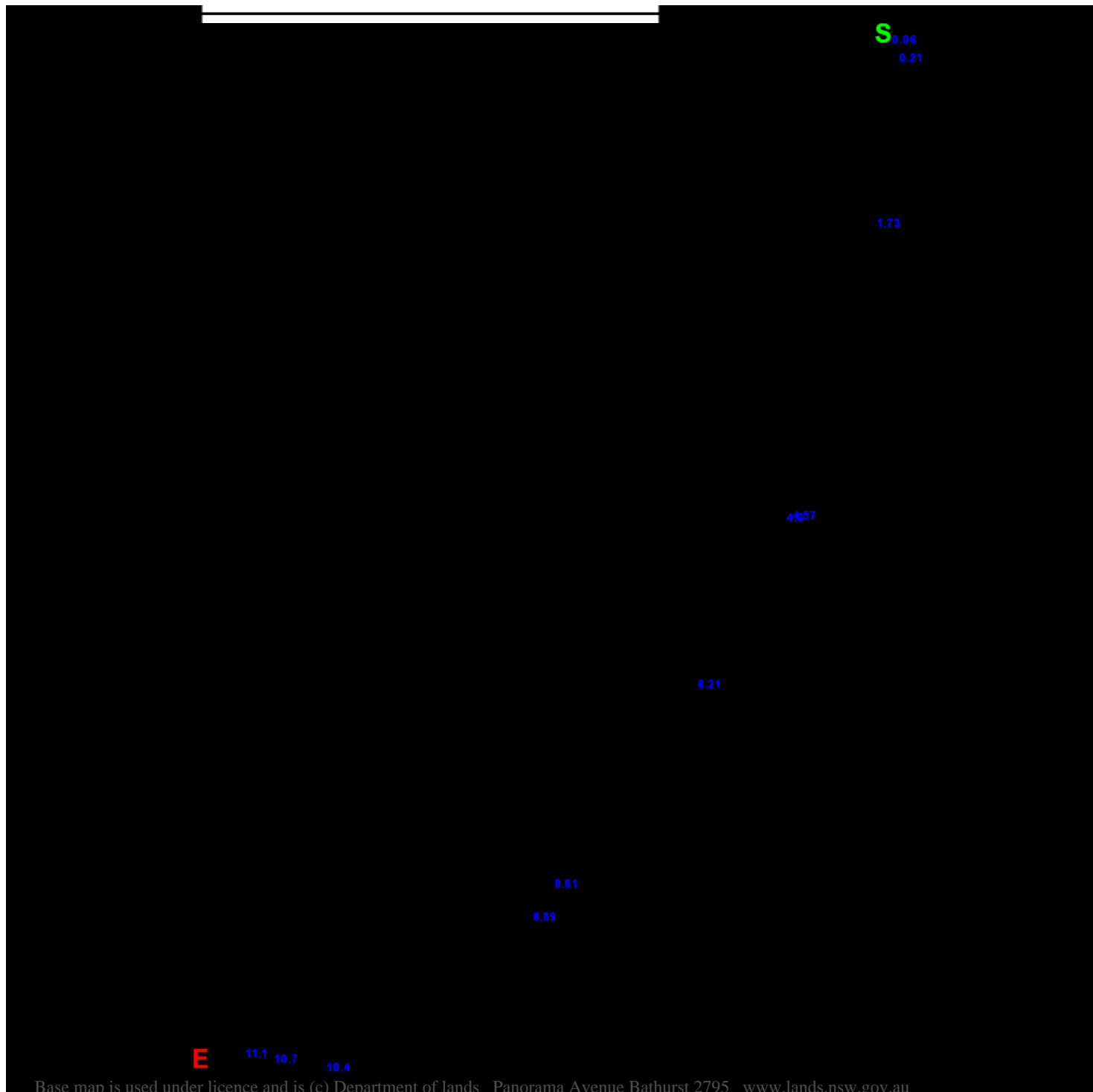
## Join Australia's largest Bushwalking Club

• Explore new places • Make new friends • Over 1000 guided walks every year  
Join NPA in 2012 and receive a free bushwalking guide book.

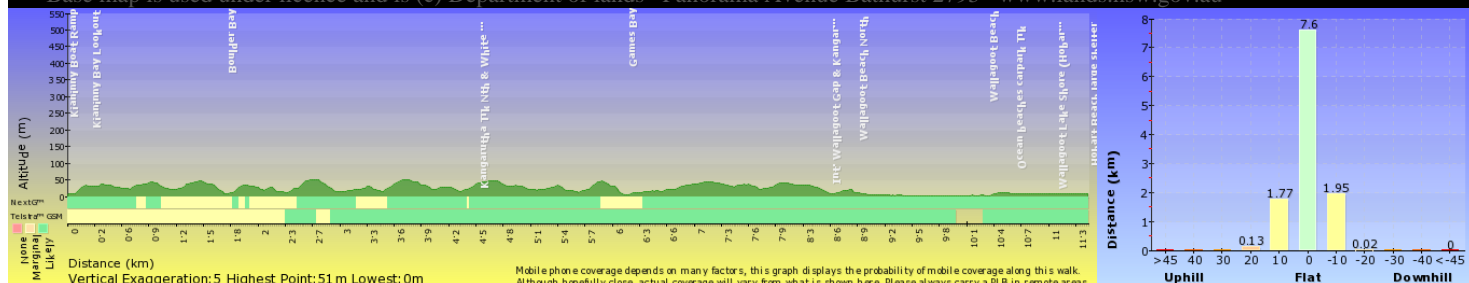
bushwalks@npansw.org.au  
www.npansw.org.au  
(02) 9299 0000



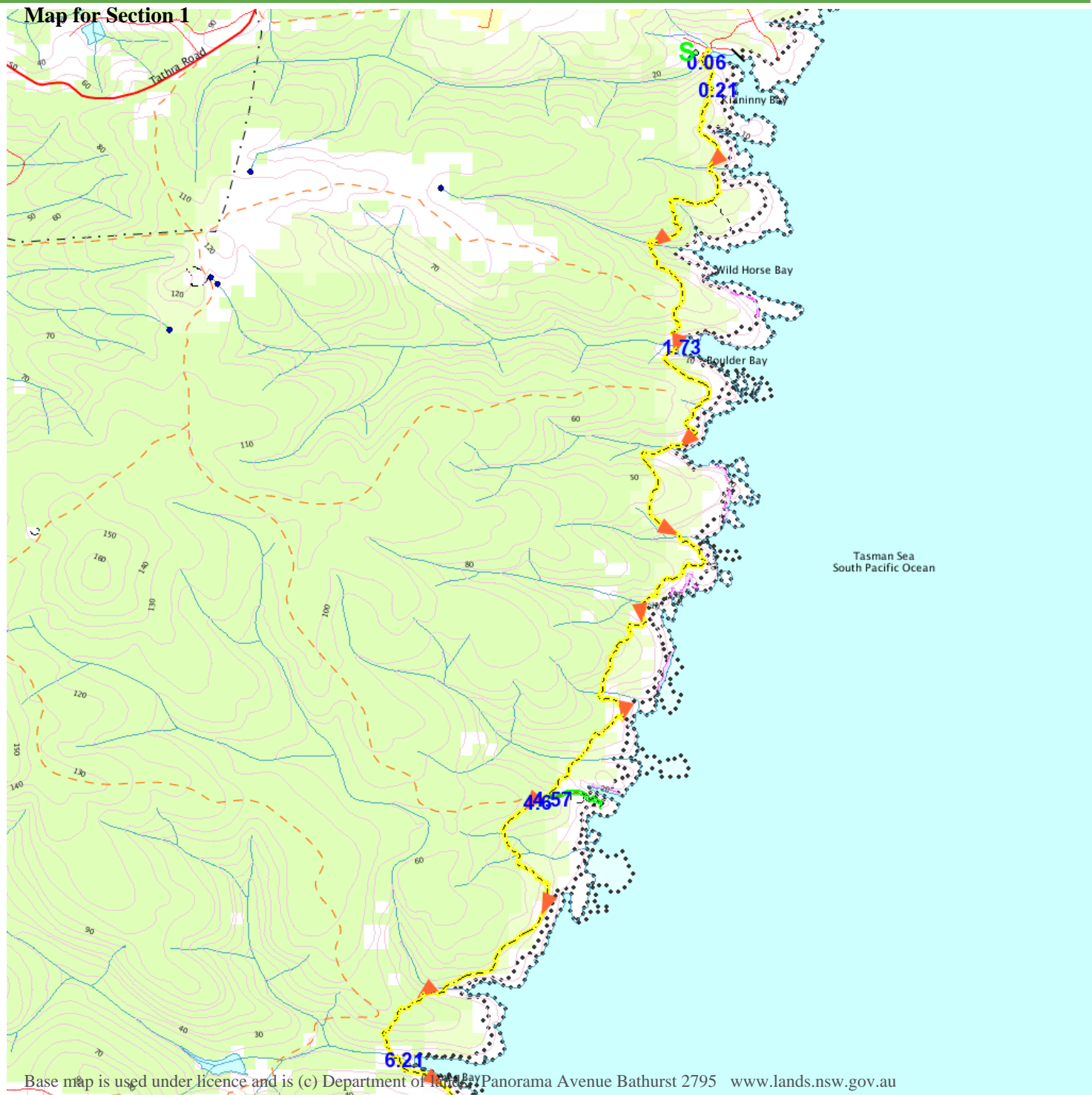
Photo: © Henry Gold



Base map is used under licence and is (c) Department of lands Panorama Avenue Bathurst 2795 www.lands.nsw.gov.au







Map Scale 1 km

## Join Australia's largest Bushwalking Club

• Explore new places • Make new friends • Over 1000 guided walks every year  
Join NPA in 2012 and receive a free bushwalking guide book.

bushwalks@npsnw.org.au

www.npsnw.org.au

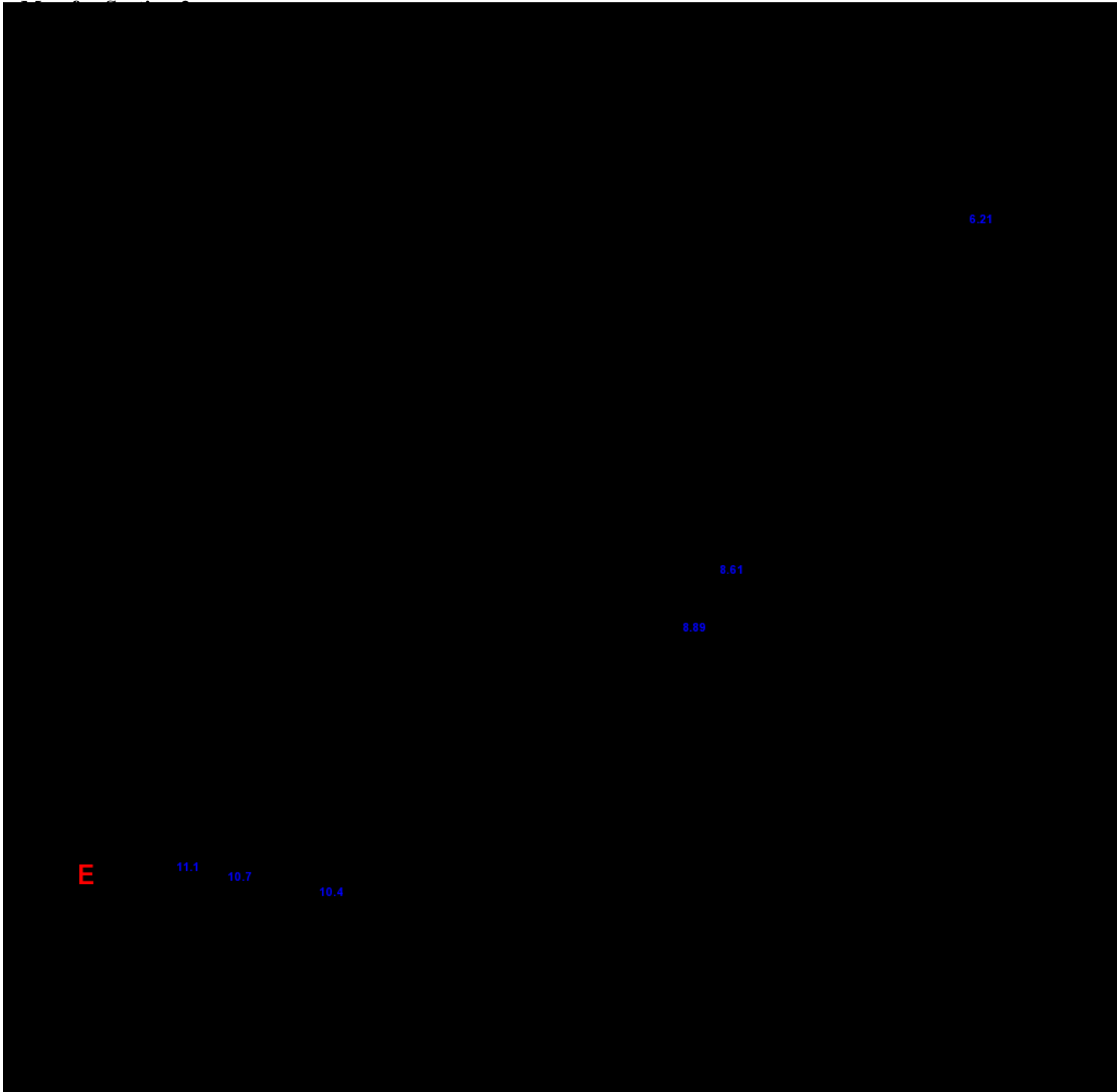
(02) 9299 0000



Photo: © Henry Gold



# Kangarutha Track to Hobart Beach



Base map is used under licence and is (c) Department of lands Panorama Avenue Bathurst 2795 www.lands.nsw.gov.au

Map Scale 1 km

## Join Australia's largest Bushwalking Club

• Explore new places • Make new friends • Over 1000 guided walks every year  
Join NPA in 2012 and receive a free bushwalking guide book.

bushwalks@npansw.org.au  
www.npansw.org.au  
(02) 9299 0000



Photo: © Henry Gold