



This loop walk starts from the Hunter Lookout picnic area. The walk provides great views across the valley and winds around the edge of the ridge line, passing Macleans lookout, also with great views. The walk continues along a short section of the Great North Walk, through an open forest to the end of Glen road. From here the walk follows the dirt roads back to the Hunter Lookout.

Heaton State Forest

Length: 2.5 km
Time: 1 Hr
Climb: 138 m
Style: Circuit
Rating: Track: Hard
Where: 13.6 km N of Cooranbong
Transport: car



Visit www.wildwalks.com for more info



Side trips and Alternate routes mentioned in these notes are not included in the tracks overall rating, distance or time estimate. The notes only describe the side trips and Alternate routes in one direction. Allow extra time for resting and exploring areas of interest. Please ensure you and your group are well prepared and equipped for all possible hazards and delays. The authors, staff and owners of wildwalks take care in preparing these notes but will not accept responsibility for any inconvenience, loss or injury sustained by using these notes or maps. Please take care and share your experience through the website. Please check park closures, weather information and Fire Danger Rating just before leaving for your walk. Walk maybe closed during Total Fire Ban. GPS for start and end of this walk: -32.9626,151.4138



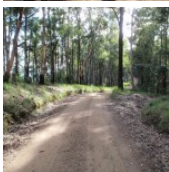
Wildwalks



Download the free [Bushwalk Australia eMag](http://bushwalk.com)

The eMagazine is produced by the community at bushwalk.com and the Wildwalks team
[Bushwalk.com](http://bushwalk.com) Australia's most active bushwalking forum - Check it out.

Happy Reading. Matt :)



Hunter Lookout

Hunter Lookout can be found on Bakers Road, along the Great North Walk. This fenced lookout has everything you will need snack-stop, including toilets, picnic tables, chairs and wood-fired barbecues. This lookout has fantastic views over much of the Hunter region. In 2010, a series of vandalism attacks occurred on the water tank, so water is no longer available at Hunter Lookout.

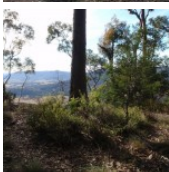


Hunter Lookout picnic area to Macleans Lookout 0.7km 10 mins

(From S) From the picnic area, this walk heads north, past the metal gate to the intersection of Bakers Road.

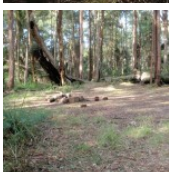
Veer left: From the Hunter Lookout picnic area (on Bakers Road), this walk follows Bakers Road north and gently downhill, while keeping Hunter Lookout on your left. The walk continues for about 400m until coming to a Y-intersection (Bakers Road loop).

Continue straight: From the intersection (Bakers Road Loop), this walk follows the track gently uphill, while keeping the other end of Bakers Road Loop to your right, gently downhill. The walk follows the road for about 130m until coming to Macleans Lookout.



Mcleans Lookout

Mcleans Lookout offers magnificent views of the valleys in Heaton State Forest. Located on Bakers Road, this fenced lookout also has picnic facilities including tables with seats and open grassy areas.

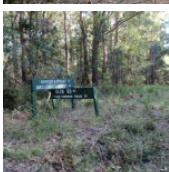


Maclean Lookout to Int of GNW track AND Glen Road 0.7km 15 mins

(From 0.7 km) **Veer right:** From Mcleans Lookout, this walk follows Bakers Road gently downhill, while keeping Macleans Lookout behind you on your left. The walk continues for about 80m until coming to a three-way intersection with a wide track and GNW arrow marker (on the left).

Continue straight: From the intersection, this walk follows the trail gently downhill, while keeping the 'Heaton Lookout' sign on your right. The walk continues (becoming moderately steep downhill) for about 280m until coming to a three-way intersection with a track on the left.

Turn sharp right: From the intersection, this walk follows the track moderately steeply downhill, while keeping the GNW arrow marker on your left. The walk continues (descending moderately steeply into and out of a gully) for about 150m, until coming to a three-way intersection, Glen Road.



Int of Great North Walk and Glen Road to Glen Road Rest Area 0.3km 5 mins

(From 1.37 km) **Continue straight:** From the intersection, the walk follows the 'Glenn Road' sign up the steep, rocky hill to the top, where it flattens out and comes to a rest area.



Glen Road Rest Area to Int of Bakers and Glen Roads 0.6km 10 mins

(From 1.64 km) **Continue straight:** From the rest area, the walk heads west along Glenn Road through an open wooded forest, winding to the intersection of 'Glen Road' and Bakers Road.



Int of Bakers & Glen Roads to Hunter Lookout picnic area 0.3km 4 mins

(From 2.2 km) Veer right: From the intersection, this walk follows Bakers Road gently uphill, while keeping Glen Road on your right. The walk continues, undulating gently for about 250m until coming to Hunter Lookout picnic area (on the left).

Veer left: From the intersection, this walk heads off the road and up the hill following the Hunter Lookout picnic area sign, past the wooden gate and the public toilet, to the picnic area area and the lookout.



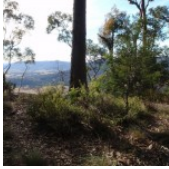
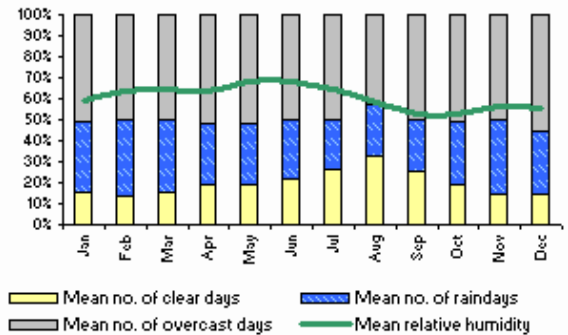
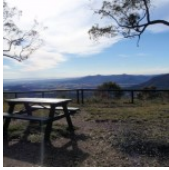
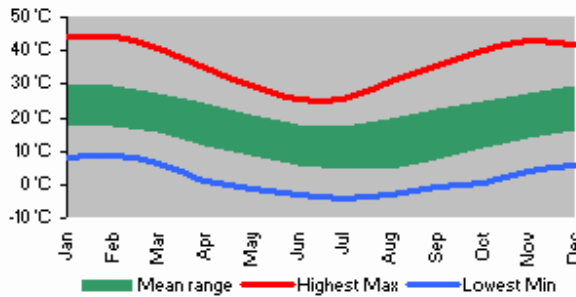
A list of paper topographical maps that cover this walk

- [Quorrobolong](#) 1:25 000 Map Series
- Cessnock 1:50 000 Map Series
- Cessnock 1:100 000 Map Series



Nearby outdoor and camping stores

- Carneys Sport & Leisure** 137 Vincent St Cessnock (02) 4991 2208
- Lake Macquarie Kayaks & Camping** Unit 1 61 Alliance Ave Morisset (02) 4973 2028
- East Lake Refrigeration** 511 Lake Rd Argenton (02) 4958 6255
- Camping World** Cnr Hillsborough & Macquarie Rds Warners Bay (02) 4956 6183
- Camping World** 3/ 276 Macquarie Rd Warners Bay (02) 4956 6183



This space is available for advertising



Full colour
Great photos



Give the joy of walking to a friend
(and support wildwalks)

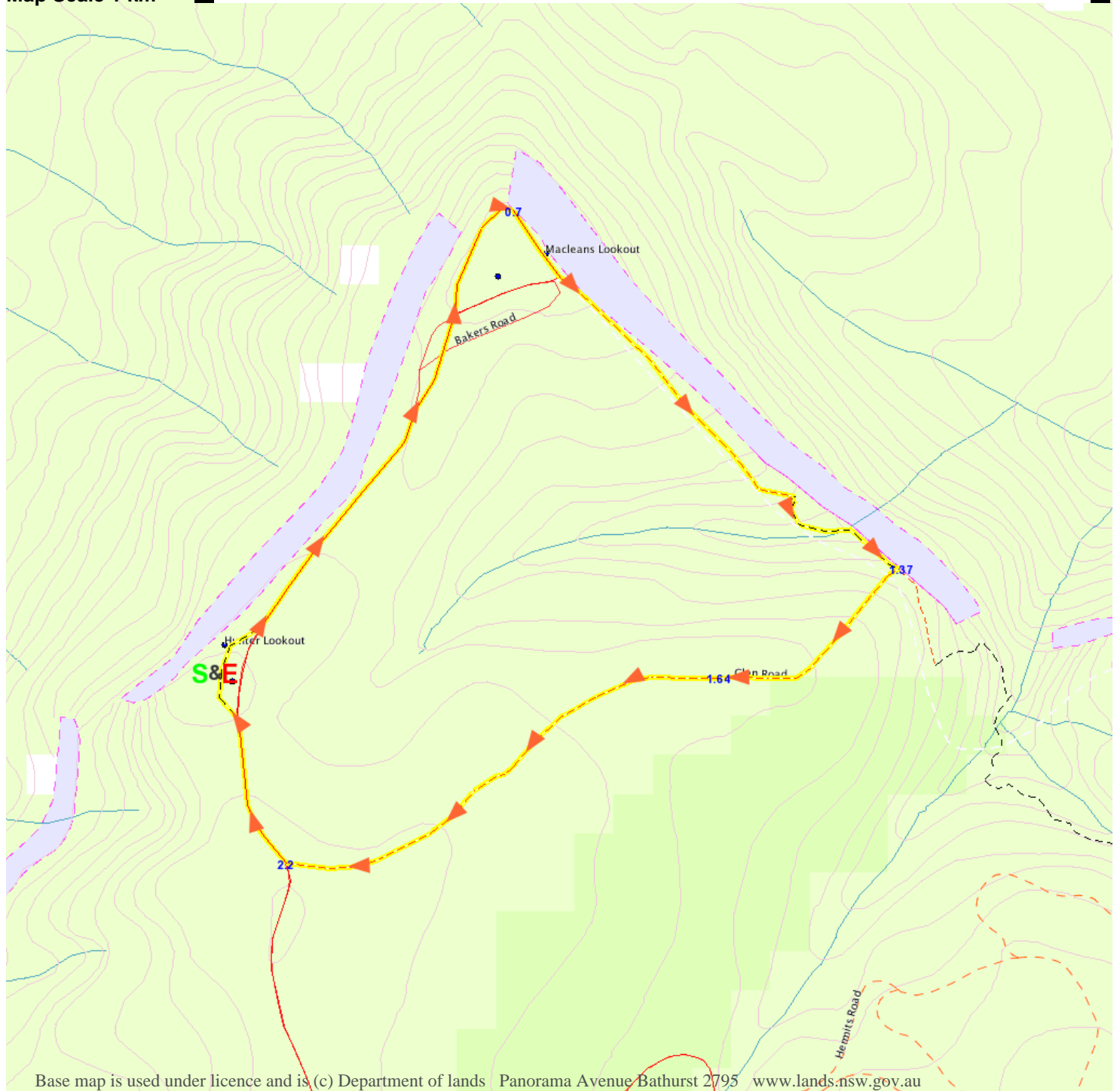
www.wildwalks.com/books.html



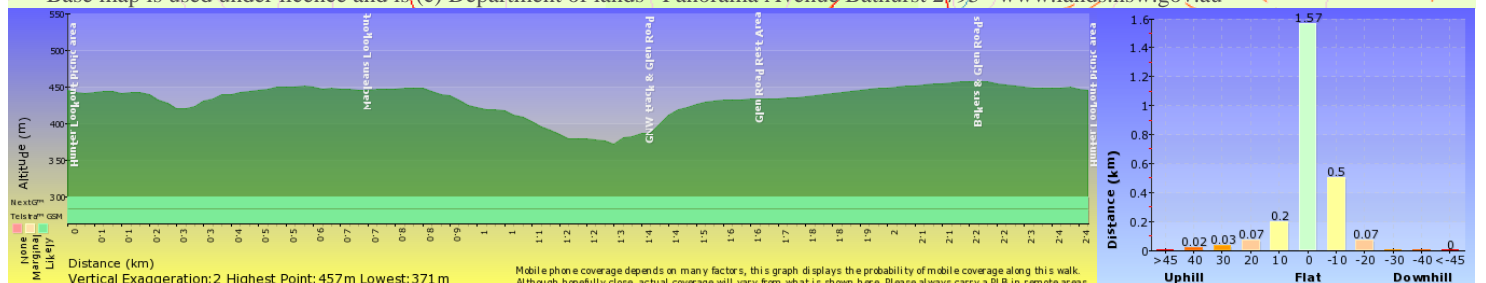
A walk for every body



Map Scale 1 km



Base map is used under licence and is (c) Department of lands Panorama Avenue Bathurst 2795 www.lands.nsw.gov.au



Mobile phone coverage depends on many factors, this graph displays the probability of mobile coverage along this walk. Although hopefully close, actual coverage will vary from what is shown here. Please always carry a PLB in remote areas.