

Hobart Beach, Bournda Lagoon and Beach loop



This is an expansive walk out from Hobart Beach camping area taking in some of the best sights of Bournda National Park. The walk explores the area from the campsite, and around Bournda Lagoon, before following the beautiful North Tura and Bournda beaches back to the start. There is plenty of opportunity along this walk to get the toes wet and to simply enjoy your surroundings.

Bournda National Park

Length: 10.6 km
Time: 3 hrs 45 mins
Climb: 139 m
Style: Circuit
Rating: Track: Hard
Where: 7.5 km SSW of Tathra
Transport: car



Visit www.wildwalks.com for more info



Side trips and Alternate routes mentioned in these notes are not included in the tracks overall rating, distance or time estimate. The notes only describe the side trips and Alternate routes in one direction. Allow extra time for resting and exploring areas of interest. Please ensure you and your group are well prepared and equipped for all possible hazards and delays. The authors, staff and owners of wildwalks take care in preparing these notes but will not accept responsibility for any inconvenience, loss or injury sustained by using these notes or maps. Please take care and share your experience through the website. Please check park closures, weather information and Fire Danger Rating just before leaving for your walk. Walk maybe closed during Total Fire Ban. GPS for start and end of this walk: -36.797,149.94



National Parks Association of NSW - Learn more about the NPA www.npansw.org.au

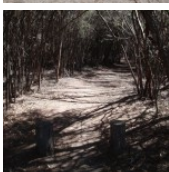
Walk with a club - Enjoy bushwalking and make new friends (community announcement)

The NPA is more than just a bushwalking club. We are a conservation group that helps protect natural places
 As a member you can join any of our 1000 guided walks each year and enjoy our quarterly Magazine 'Nature NSW'.
 Membership fee is just \$65 per year, concession fee also available. [Learn More...](#)



Hobart Beach campground

This is a well-established campsite close to the beach and lake. There are garbage and recycling bins. Each camping space is well-defined and there is a large covered common area. The camp surrounds the stone and timber toilet and laundry facility.

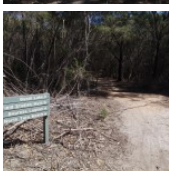


Hobart Beach large shelter to Int. near Bournda Rd and Hobart Beach Rd 0.4km 5 mins

(From S) From the intersection, this walk follows the path and the sign to the 'Field Study Huts' past the large picnic shelter (on the left). The track soon passes a volleyball court (on the right) and a fire pit (on the left), then follows a track marker through the dense melaleuca. The track soon comes to a three-way intersection marked with several signs, including one pointing back to 'Hobart Beach Camping Area'.

From the intersection, the walk continues straight along the track, following the 'Bondi Lake' sign through the melaleuca. The track soon comes to another three-way intersection, marked with another sign pointing back to 'Hobart Beach Camping Area'.

Continue straight: From this intersection, this walk heads south along the track, following the 'Bondi Lake' sign through the melaleuca. The track soon comes to then crosses the dirt Bournda Rd to the 'Hobart Beach Camping Area 0.5km'sign on the otherside.

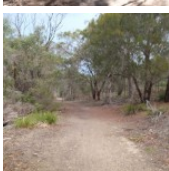
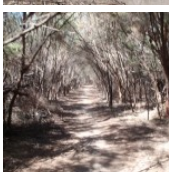


Int. Bournda Rd and Hobart Beach Rd to Bournda Beach car park 1.7km 25 mins

(From 0.41 km) Continue straight: From the road, this walk follows the sign to 'Bondi Lake' between the timber posts and along the wide track. The track winds through the tall heath for a while untill passing an old hut (on the left) where the track comes to a three way intersection marked with a 'hobart beach camp' sign pointing back along the track.

From the intersection, this walk follows the 'bournda lagoon' sign along with wide track. The track passes along the side of Bondi Lake (not visable on the left) to come to a faint intersection with the signposted 'Field Studies Huts' track (on the right).

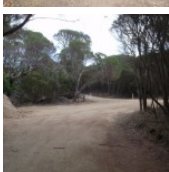
Continue straight: From the intersection, this walk leaves the hill and the 'Field Studies Huts' sign behind, on the right of the track, as the track continues through the heath, heading up a slight rise to a signposted intersection in Bournda Beach car park.



Bournda Beach car park to Bondi Lake Sth 0.4km 5 mins **Optional Side Trip:**

(From 2.11 km) Turn left : From the car park, this walk heads between the trees at the point where three short vertical logs mark the track. The track heads down through the bush to the base of a set of stairs.

Turn left: From the bottom of the stairs, the walk keeps the bottom of the dunes to the right for some time and then tends to the left through the trees. The track winds through the trees to open out onto the large treeless clearing of Bondi Lake. (Retrace your steps back to the main track, then veer left to continue along this walk.)





Bondi Lake

Bondi Lake lies south of Tathra, behind Bournda Beach in Bournda National Park. The lake, when filled, is a shallow body of fresh water, which is fed by streams all found within the National Park. The lake, when dry, resembles a paddock with many kangaroos grazing in the middle of the dry lake. The lake can be accessed by bush tracks from Bournda Lagoon car park or Hobart Beach camping area.



Bournda Beach car park to Int Bournda Rd and Bournda Beach Parking Area 0.1km 1 mins

(From 2.11 km) Continue straight: From the intersection, the walk follows the 'Bournda Lagoon' sign up the hill to the signposted intersection with a management trail.



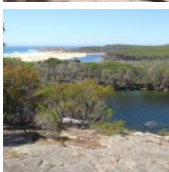
Bournda Lagoon Carpark to Int. Bournda Rd and Bournda Beach Parking Area 0.1km 3 mins

(From 2.19 km) Turn left: From the gate, this walk heads up through the car park following the 'Hobart Beach Camping Area' arrow on the signpost. The trail comes to a signpost for 'Bournda Beach Parking Area'.



Bournda Beach picnic area

Bournda Beach picnic area is found next to Bournda Lagoon car park, in Bournda National Park. The picnic area is shaded by the trees behind Bournda Beach, which is between Tathra and Merimbula. The picnic area has modest facilities with a few picnic tables, BBQ pit and a toilet nearby. The picnic area is a great place to eat lunch before heading down to Bournda Beach or Lagoon, which are only a stroll away through the bush.



Bournda Lagoon Carpark to Bournda Lagoon Lookout 0.2km 5 mins

(From 2.34 km) Turn right: From the intersection, this walk heads along the car park (on the right) to the signposted intersection at the other corner of the car park. The walk then follows the sign 'Bournda Walking Track' down the hill. The track winds for a short time to come to a 'Walking Track' signposted intersection before the lagoon.

Veer right: From the intersection, this walk follows the arrow on the sign 'Walking Track' keeping the lagoon on the left. The track soon meets a signposted hill, which it heads up, coming to an signposted intersection on the left.

Continue straight: From the intersection, this walk follows the sign to the lookout. The track winds through the trees, up onto a rocky platform overlooking the lagoon and beach.



Bournda Lagoon Lookout

Bournda Lagoon lookout is a small unfenced rock platform perched above Bournda Lagoon, in Bournda National Park. The views to the south, over the lake, reveal how close the lagoon is to the beach. The angle of the lookout onto the water gives a look through the water to the bottom of the lagoon.



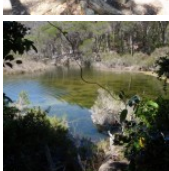
Bournda Lagoon Lookout to Int. North Tura Carpark and Bournda Lagoon Trk 2.3km 40 mins

(From 2.58 km) Turn around: From the lookout, this walk heads away from the unfenced rock edge and into the trees. The track keeps the lagoon below on the right as it winds through the trees to a signposted intersection.

Turn left: From the intersection, this walk follows the sign 'Walking Track', winding up the hill, then turning left and soon coming to a 'Walking Track' signposted intersection.

Continue straight: From the intersection, this walk follows the 'Walking Track' arrow down the steps. The steps lead the walk beneath a line of cliffs, then the track turns left, down the hill, entering an area of rainforest vegetation (which is signposted). The track then continues down closer to the water where it turns right, and keeps the lagoon on the left for some time. The track then passes a whole lot of seats with a signpost marked 'Study Area 1'. The track continues past this to more closely follow the waterline, on the left, coming to 'Study Area 2'. The walk passes over a log then follows the track markers along the creek bank. The track then turns left, up the hill, and follows a rocky path over the hill and down to a dry creek crossing. The track crosses to the other side, where there is a signpost.

Veer right: From the intersection, this walk follows the arrow up the rocky hill. The track winds along the hillside, with Sandy Beach Creek below on the right. The track soon descends from the hill, meandering through the bush, tending left (away from the creek) to a well-signposted intersection.



Int North Tura Carpark and Bournda Lagoon Trk to Int. Bournda Lagoon and Island Trks 1km 15 mins **Alternative ROUTE:**

(From 4.91 km) Turn left : From the intersection, the walk follows the 'Bournda Lagoon via Bournda Headland' sign, tending left down the hill. The walk heads straight past a 'Kunzea' sign to the right, before passing over numerous speed bump like mounds on a white dirt path. The track continues straight up this hill to wind past a 'Melaleuca' sign to the left of the track. From here, the track meanders down the hill to a signposted intersection.

Veer left: From the intersection, this walk follows the sign to 'Bournda Lagoon via Bournda Headland', keeping the ocean on the right of the track. The track winds behind the dunes to soon come to a signposted intersection.

Continue straight to rejoin the main walk, following the notes from 6.61km 'Int. Bournda Lagoon and Island Trks'.



Int. North Tura Carpark and Bournda Lagoon Trk to Nth Tura Car Park Picnic Area 0.8km 10 mins

(From 4.91 km) Turn right: From the intersection, this walk follows the sign 'Nth Tura Carpark' down the hill. The sandy track meanders through the heath to a signposted intersection.

Turn left: From the intersection, this walk follows the sign to 'Nth Tura Carpark', heading down the track through the thick heath. The track winds a little as it passes into areas of open and closed heath, and also passes a 'Walking Track' sign. The walk continues for a short time to meet a signposted intersection with picnic tables at the car park.



Nth Tura Car Park Picnic Area to Nth Tura Lookout 0.1km Optional Side Trip:

(From 5.68 km) Turn right: From the intersection, the walk heads away from the sign and the picnic tables, which are on the right, keeping the car park on your right. The walk comes to the middle of the car park where a fenced-track leads out onto a verandah.

Turn left: From the intersection, the walk follows the sign for 'Viewing Platform' out to the verandah lookout. (Retrace your steps back to the main track, then veer right to continue along this walk.)



North Tura Lookout

North Tura Beach Lookout is located between Tathra and Merimbula in Bournda National Park. The lookout has stunning views over North Tura Beach, all the way south to Tura Headland and out to sea. The lookout is also a great viewing point for Turingal Head and Bournda Island. The lookout is easily accessed from North Tura car park and is wheelchair-accessible.



Nth Tura Car Park Picnic Area to Nth Tura Beach 0.1km 2 mins

(From 5.68 km) Turn left: From the intersection, this walk follows the sign 'Steps to Beach 80m' down the hill. The walk winds down through the melaleuca trees to an unsignposted intersection with a set of stairs.

Turn right: From the intersection, this walk follows the stairs down the hill and through the heath and then onto the beach.



Nth Tura Beach to Nth Tura Beach and Bournda Island Trk 0.8km 10 mins

(From 5.77 km) Turn left: From the staircase, this walk heads north along the beach towards Bournda Island, keeping the ocean to the right. Just before the rocky Bournda Island, there is a small but distinct track on the left through the heath.



Nth Tura Beach and Bournda Island Trk to Bournda Island 0.2km 4 mins Optional Side Trip:

(From 6.56 km) Turn right: From the bottom of the steps, this walk heads away from the stairs and across the beach towards Bournda Island. The walk continues along the sand to a small cave feature at the base of the island.

Veer right: From the intersection, the walk keeps the cave feature on the right and climbs up the ridge of rock. The track winds along the left-hand side of the island, with the ocean below on the left. The walk heads up onto the hill with views of both North Tura and Bournda Beaches.

(Retrace your steps back to the main track, then veer right to continue along this walk.)



Bournda Island

Bournda Island separates Bournda and North Tura beaches, and is located between Tathra and Merimbula. The island is joined to the mainland by a tombola beach, which can be submerged by the tide to form a real island. Bournda Island is covered in low dune shrub vegetation species that are perched on top of the rocky island. Access to the island is at low tide from Bournda or North Tura beaches. Bournda Island can also be accessed from the Bournda Lagoon via Headland Track.



Nth Tura Beach and Bournda Island Trk to Bournda Bch Sth 0.2km 4 mins

(From 6.56 km) Turn left: From the beach, the walk heads up the stairs away from the ocean. The walk heads over the top of the hill to a signposted intersection.

Turn right: From the intersection, this walk follows the sign to 'Bournda Lagoon', following the white fencing. The walk keeps the ocean on the right as it winds down to a grassy lookout on the right of the track (with fantastic views of Bournda Island). The walk then heads down some stairs to a signposted intersection on the beach.



Bournda Beach to Bournda Bch Sth 0.6km 5 mins

(From 6.79 km) Continue straight: From the intersection at the southern end of the beach, the walk heads along the beach, keeping the ocean to the right, and the dunes to the left. The walk continues past views of Bournda Lagoon to a spot opposite a set of stairs (going up the taller dunes on the left).



Bournda Beach

Bournda Beach, Bournda National Park, lies between Tathra and Merimbula, and forms the southern end of Wallagoot Beach. The beach provides some good surf conditions with a south-easterly aspect (not patrolled). At the southern end of the beach is Bournda Island, attached to the beach by a rocky headland and tombola (sand joining the island to mainland). The dunes backing the beach are undergoing rehabilitation. Bournda Beach is accessed by Bournda Rd at either Hobart Beach camping area, Bournda Lagoon or Wallagoot Gap parking areas.



Bournda Beach to Wallagoot Beach 2.2km 30 mins

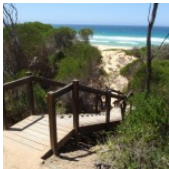
(From 7.36 km) Continue straight: From the middle of the beach, opposite a set of erosion control steps, the walk heads along the beach, keeping the ocean to the right. The walk continues along the beach until it comes opposite a set of erosion control steps to the left.



Continue straight: From the middle of the beach, across from a set of erosion control steps, the walk heads along the beach, keeping the ocean to the right. The walk continues along the beach for quite some time to a point opposite a set of erosion control steps going up the dunes to the left.

Wallagoot Beach

Wallagoot Beach, is located east of Wallagoot Lake in Bournda National Park, between Tathra and Merimbula. The beach is a large expanse of white sand, with surf conditions created by its south easterly aspect. The beach's northern end sometimes floods, due to Wallagoot Lake breaking through the beach's sand barrier. Alternative access (instead of Wallagoot Lake Rd) is from Bournda Rd, through Hobart Beach camping area.



Wallagoot Beach to Ocean beaches carpark Trk 0.3km 5 mins

(From 9.53 km) Turn left: From the intersection, this walk heads away from the beach and up the erosion control stairs. The walk then heads down the stairs onto a sandy clear trail which winds through the bush. The track soon meets a signposted intersection.



Ocean beaches carpark Trk to Wallagoot Lake Shore (Hobart Beach) 0.4km 5 mins

(From 9.83 km) Turn left: From the intersection, this walk follows the sign to the 'Parking Area' along the sandy track, towards the distant hills. The walk winds through the melaleuca, some of which are on the track. The soon comes to a timber boardwalk and a three way intersection with a 'Ocean Beaches' sign pointing back along the track.



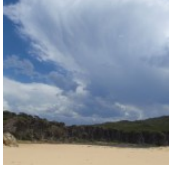
From the intersection, this walk follows the 'Hobart Beach camp' sign off the end of the board walk to the come to a car park a short distance later. At the carpark the walk turns right to find a signposted intersection next to the picnic table.



Turn right: From the intersection, this walk follows the arrow on the sign to 'Wallagoot Lake', away from the car park and picnic table. The track tends right, down the hill, for approximately 50m to an intersection on the shore of Wallagoot Lake.

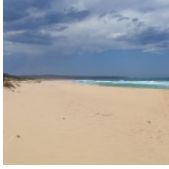
Hobart Beach

Hobart Beach is located on the southern shores of Wallagoot Lake, between Tathra and Merimbula. Hobart Beach extends from the sand dunes to Scotts Bay, on Wallagoot Lake. The beach is a thin slice of white sand between the treeline and the lake, and provides plenty of opportunity to go for a swim and enjoy the water. Access to the beach is through Hobart Beach camping area, off Bournda Rd in Bournda National Park.



Wallagoot Lake (Lagoon)

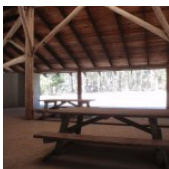
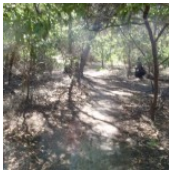
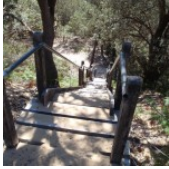
Wallagoot Lake, Bournda National Park, is located between Tathra and Merimbula on the Sapphire Coast Drive. Wallagoot Lake is a large expanse of water, although it is only two to three metres deep. The lake's catchment is found predominantly within Bournda National Park, the main tributary being Moncks Creek. The lake is blocked from the ocean by sand dunes on the eastern end - these dunes are broken intermittently, connecting the lake with the sea. Wallagoot Lake is home to many bird species including Black Swans and a threatened Tern.



The lake is a popular spot for picnics and other recreation. Hobart Beach camping area lies on the southern shore of the lake, and on the northern edge lies the Wallagoot Lake Boat Club, with its parking, and also a picnic area, providing plenty of opportunities to enjoy the lake. Wallagoot Lake can be accessed by Wallagoot Lake Rd off the Sapphire Coast Drive. [More info](#)

Wallagoot Lake Shore (Hobart Beach) to Hobart Beach large shelter 0.3km 5 mins

(From 10.26 km) Turn sharp left: From the intersection, the walk heads away from Wallagoot Lake, keeping it a bit to the right for a short time, passing a post with a red reflective marker. The track tends right, away from the lake and the beach, to come into view of a clearing, the campsite, on the left. The track continues to an area with cut logs on the ground. The walk passes these logs, continuing to the main road, to the right of large triangular shelter where there is a signpost.



A list of paper topographical maps that cover this walk

[Wolumla](#) 1:25 000 Map Series

Bega 1:100 000 Map Series

Nearby outdoor and camping stores

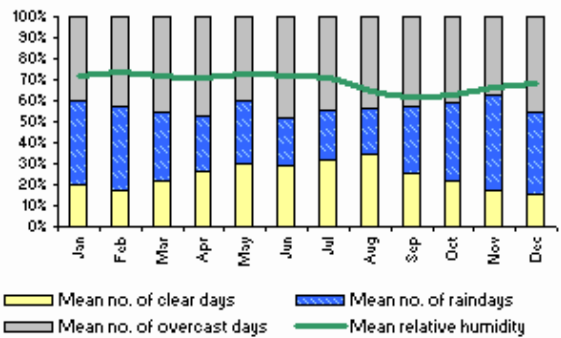
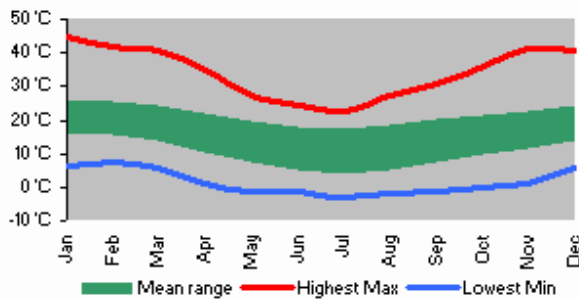
Camping Plus 6 Alice St Merimbula (02) 6495 2571

Gas Connection The Arthur Kaine Drv Pambula (02) 6495 7121

Barbeques Galore (Bega) 274 Carp St Bega (02) 6492 4054

Camping Outdoors Centre 43 Vulcan St Moruya (02) 4474 3081

Gone Fishin Cnr Ford & Queen Sts Moruya (02) 4474 4381





Hobart Beach, Bournda Lagoon and Beach loop

Join Australia's largest Bushwalking Club

- Explore new places • Make new friends • Over 1000 guided walks every year
- Join NPA in 2012 and receive a free bushwalking guide book.

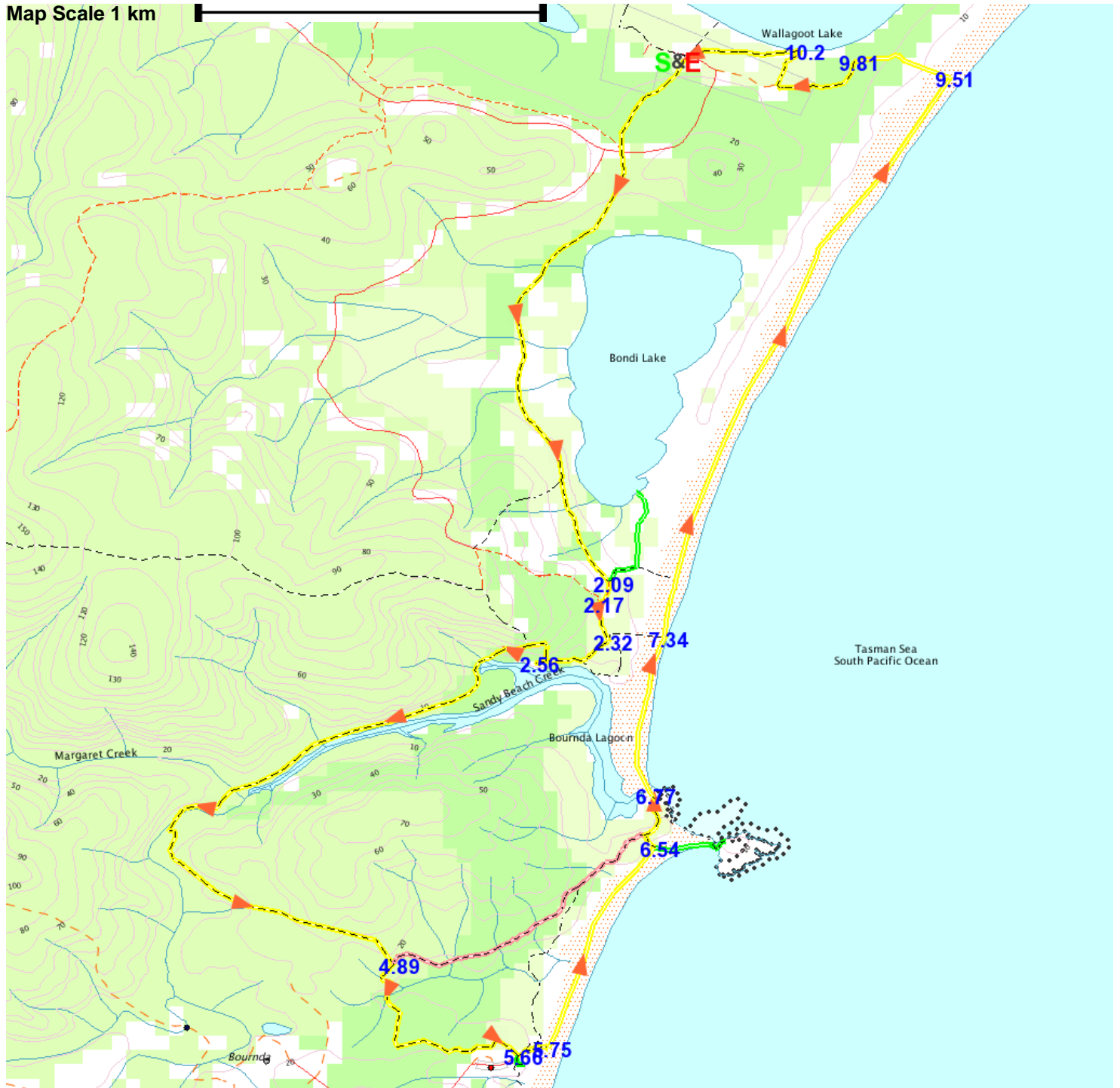
bushwalks@npansw.org.au

www.npansw.org.au

(02) 9299 0000



Map Scale 1 km



Base map is used under licence and is (c) Department of lands Panorama Avenue Bathurst 2795 www.lands.nsw.gov.au

