



The walk to Games Bay from Hobart Beach camping area is a fantastic walk to this gem of a secluded beach. The turquoise waters of Games Bay tempt many people for a swim, and the bay is a great place for lunch under a shady tree.

Bournda National Park

Length: 10.5 km
Time: 3 hrs 30 mins
Climb: 230 m
Style: Return
Rating: Track: Hard
Where: 7.5 km SSW of Tathra
Transport: car



Visit www.wildwalks.com for more info



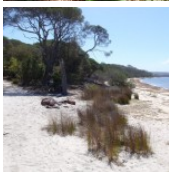
Side trips and Alternate routes mentioned in these notes are not included in the tracks overall rating, distance or time estimate. The notes only describe the side trips and Alternate routes in one direction. Allow extra time for resting and exploring areas of interest. Please ensure you and your group are well prepared and equipped for all possible hazards and delays. The authors, staff and owners of wildwalks take care in preparing these notes but will not accept responsibility for any inconvenience, loss or injury sustained by using these notes or maps. Please take care and share your experience through the website. Please check park closures, weather information and Fire Danger Rating just before leaving for your walk. Walk maybe closed during Total Fire Ban. GPS for start and end of this walk: -36.797,149.94



National Parks Association of NSW - Learn more about the NPA www.npansw.org.au

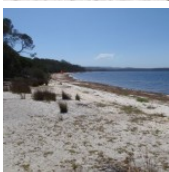
Walk with a club - Enjoy bushwalking and make new friends (community announcement)

The NPA is more than just a bushwalking club. We are a conservation group that helps protect natural places. As a member you can join any of our 1000 guided walks each year and enjoy our quarterly Magazine 'Nature NSW'. Membership fee is just \$65 per year, concession fee also available. [Learn More...](#)



Hobart Beach campground

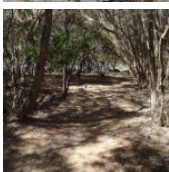
This is a well-established campsite close to the beach and lake. There are garbage and recycling bins. Each camping space is well-defined and there is a large covered common area. The camp surrounds the stone and timber toilet and laundry facility.



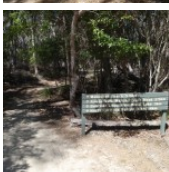
Hobart Beach large shelter to Ocean beaches carpark Trk 0.8km 5 mins

(From S) From the shelter, the walk crosses the road (away from the face of the signpost and shelter). The track follows the road into the campsites, turning right immediately through the logs. The track then continues away from the campsites, with the lake and beach coming into view on the left. The track continues to tend left towards the lake, where it comes to a clearing just behind Hobart Beach.

Turn sharp right: From the intersection, this walk heads directly away from the lake, towards the slight clearing on the left and past the white dot on the tree. The track meanders through the melaleuca for a short time to open out onto a car park, with a signpost pointing back to 'Wallagoot Lake'.



Turn left: From the middle of the carpark, this walk follows the sign to 'Wallagoot Beach' away from the carpark (not the 'Wallagoot Lake' sign next to the picnic table). The wide track soon comes to a timber boardwalk and a three way intersection marked with a 'Hobart Beach camp' sign pointing back to the carpark.

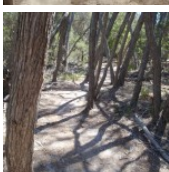


From this intersection the walk heads along the timber boardwalk following the 'Ocean Beaches' sign. The boardwalk soon end and the track winds through the melaleuca to come to a three way intersection marked with a 'Parking Area' sign pointing back along the track.



Ocean beaches carpark Trk to Wallagoot Beach 0.3km 5 mins

(From 0.76 km) Turn right: From the intersection, this walk follows the arrow on the sign to Wallagoot Beach, towards the sound of the ocean. The walk winds along the sandy track to a set of stairs, climbing the stairs to then drop down the dune on the other side, by erosion control steps in the sand. The track continues across the beach towards the water.



Wallagoot Beach

Wallagoot Beach, is located east of Wallagoot Lake in Bournda National Park, between Tathra and Merimbula. The beach is a large expanse of white sand, with surf conditions created by its south easterly aspect. The beach's northern end sometimes floods, due to Wallagoot Lake breaking through the beach's sand barrier. Alternative access (instead of Wallagoot Lake Rd) is from Bournda Rd, through Hobart Beach camping area.

Wallagoot Beach to Wallagoot Beach North 1.5km 25 mins

(From 1.06 km) Turn left: From the bottom of the ladder steps, this walk heads along the beach, keeping the ocean to the right. Wallagoot Lake soon appears on the left, behind the dunes. The walk continues along the beach to the end, where there is a set of stairs leading away from the beach. (This track may be impassable in high water, the hillside further down the beach can be used to access the stairs depending on water levels.)



Wallagoot Beach North to Int. Wallagoot Gap and Kangarutha Trks 0.3km 5 mins

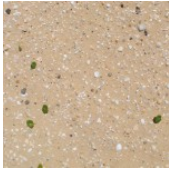
(From 2.59 km) Veer right: From the beach, this walk heads up the stairs and hill through the melaleuca trees, and soon tends left. The track continues up through the trees to an intersection just beyond the timber platform (on the right), marked with 'Kangarutha Walking Track' signs.



Int. Wallagoot Gap and Kangarutha Trks to Wallagoot Gap 0.1km 2 mins **Optional Side Trip:**

(From 2.87 km) Turn sharp right: From the intersection, the walk heads to the timber platform then down the timber steps onto Wallagoot Gap Beach.

(Retrace your steps back to the main track, then turn right to continue along this walk.)



Wallagoot Gap

Wallagoot Gap is situated south of Tathra, facing east out onto the South Pacific Ocean. The gap is created by two headlands that protect the main beach from the wind. A second beach can be found around the corner of Wallagoot Gap, by following the right-hand side wall. Wallagoot Gap is an excellent place for a swim or a play in the sand. The gap can be accessed from Wallagoot Beach car park at the end of Wallagoot Lake Rd or the Kangarutha Track.



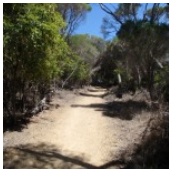
Int. Wallagoot Gap and Kangarutha Trks to Games Bay 2.4km 45 mins

(From 2.87 km) Veer right: From the intersection, this walk follows the 'Kangarutha Walking Track' arrow through the trees, keeping the coast to the right. The track winds for some time, with the ocean far below to the right of the track. The track winds back and forth for quite some time, with posts leading the way through areas of open and closed vegetation. The walk then turns left into a Games Bay, a large bay, with many access track leading down to the ocean on the right of the track. This walk leads around the bay to turn right, down to into the sandy Games Bay. The small bushes at the back of the bay hide the signpost for 'Games Bay'.



Games Bay

Games Bay, Bournda National Park, is located along the Kangarutha Track, south of Tathra. The bay is formed by two rocky sides, and backed by a sandy beach. Games Bay Creek runs through the beach out to sea, but flows intermittently. The bay is named after Mr Games, a settler who cleared and used the surrounding area of the bay for dairy farming. Mr Games also made a track from Games Bay to White Rock. The bay is backed by a small fireplace with driftwood seats around it.



This is a 'Return' style walk - retrace your steps back to the beginning when you are ready.

A list of paper topographical maps that cover this walk

[Wolumla](#) 1:25 000 Map Series

Bega 1:100 000 Map Series



Nearby outdoor and camping stores

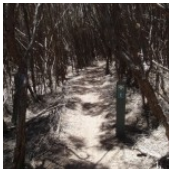
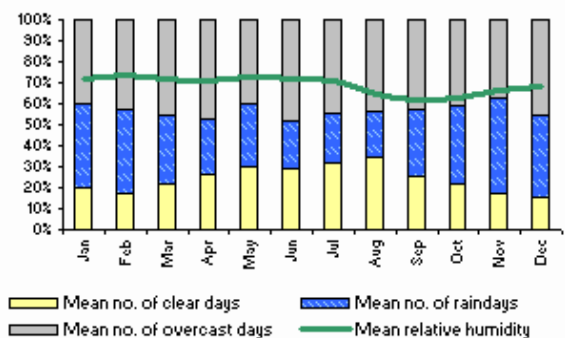
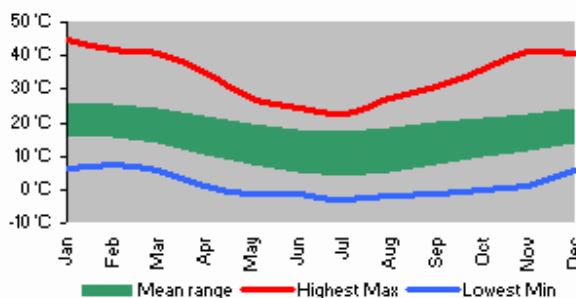
Camping Plus 6 Alice St Merimbula (02) 6495 2571

Gas Connection The Arthur Kaine Drv Pambula (02) 6495 7121

Barbeques Galore (Bega) 274 Carp St Bega (02) 6492 4054

Camping Outdoors Centre 43 Vulcan St Moruya (02) 4474 3081

Gone Fishin Cnr Ford & Queen Sts Moruya (02) 4474 4381





Hobart Beach to Games Bay

Join Australia's largest Bushwalking Club

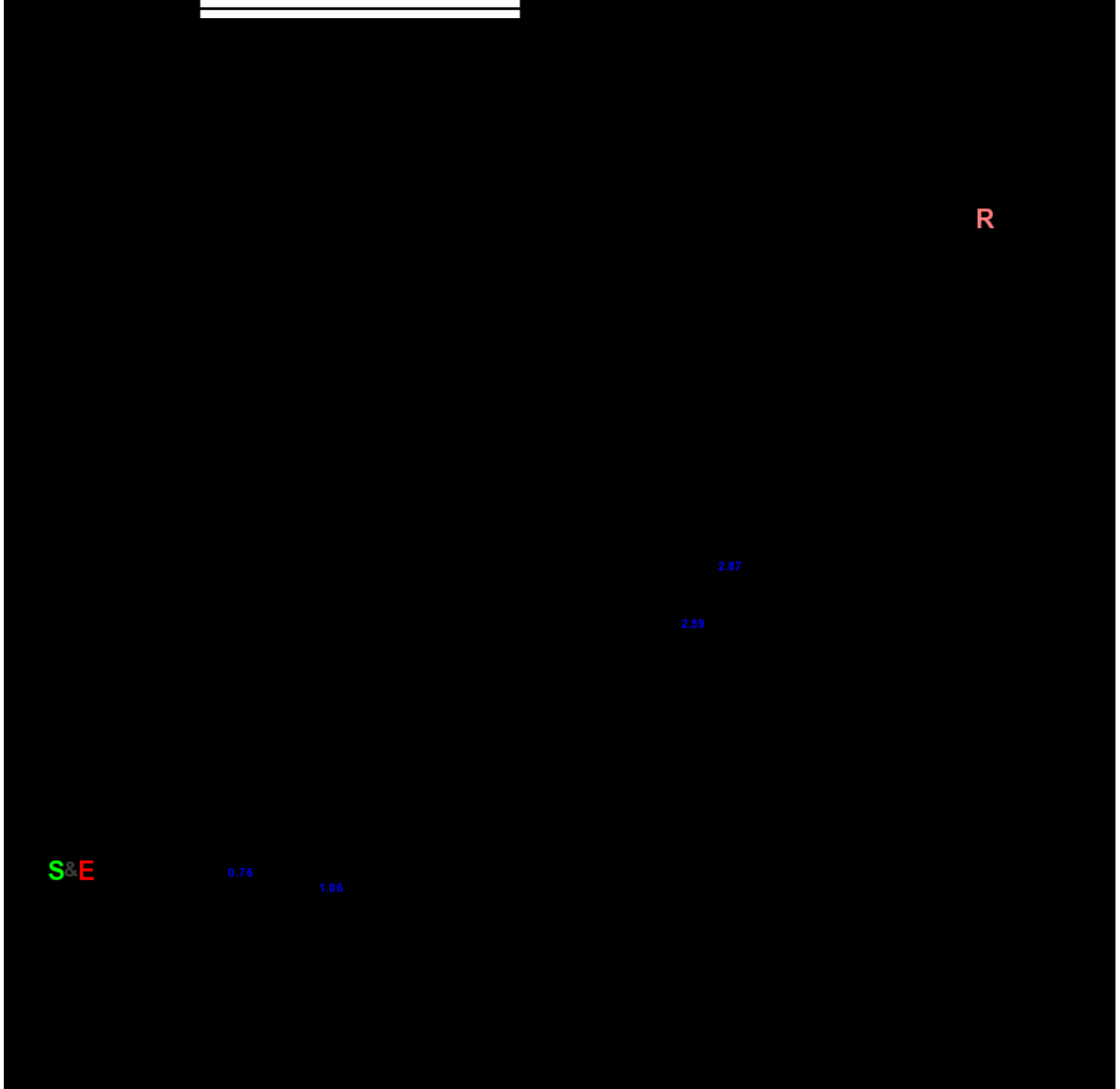
- Explore new places • Make new friends • Over 1000 guided walks every year
- Join NPA in 2012 and receive a free bushwalking guide book.

bushwalks@npansw.org.au

www.npansw.org.au

(02) 9299 0000

Photo: © Henry Gold



Base map is used under licence and is (c) Department of lands Panorama Avenue Bathurst 2795 www.lands.nsw.gov.au

