



The walk to Bournda Island from Hobart Beach camping area is an excellent way to see some of the sights in Bournda National Park. The first half of this picturesque walk is mainly closed in by heath and melaleuca, with closeup views of the local environment. The second half enjoys panoramic views from the beach. The short track up the island gives more great views up and down the coast.

Bournda National Park

Length: 7.6 km
Time: 2 hrs 15 mins
Climb: 70 m
Style: Circuit
Rating: Track: Hard
Where: 7.5 km SSW of Tathra
Transport: car



Visit www.wildwalks.com for more info



Side trips and Alternate routes mentioned in these notes are not included in the tracks overall rating, distance or time estimate. The notes only describe the side trips and Alternate routes in one direction. Allow extra time for resting and exploring areas of interest. Please ensure you and your group are well prepared and equipped for all possible hazards and delays. The authors, staff and owners of wildwalks take care in preparing these notes but will not accept responsibility for any inconvenience, loss or injury sustained by using these notes or maps. Please take care and share your experience through the website. Please check park closures, weather information and Fire Danger Rating just before leaving for your walk. Walk maybe closed during Total Fire Ban. GPS for start and end of this walk: -36.797,149.94



Wildwalks

Download the free [Bushwalk Australia eMag](http://bushwalk.com)

The eMagazine is produced by the community at bushwalk.com and the Wildwalks team
[Bushwalk.com](http://bushwalk.com) Australia's most active bushwalking forum - Check it out.

Happy Reading. Matt :)



Hobart Beach campground

This is a well-established campsite close to the beach and lake. There are garbage and recycling bins. Each camping space is well-defined and there is a large covered common area. The camp surrounds the stone and timber toilet and laundry facility.

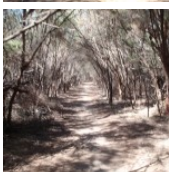


Hobart Beach large shelter to Int. near Bournda Rd and Hobart Beach Rd 0.4km 5 mins

(From S) From the intersection, this walk follows the path and the sign to the 'Field Study Huts' past the large picnic shelter (on the left). The track soon passes a volleyball court (on the right) and a fire pit (on the left), then follows a track marker through the dense melaleuca. The track soon comes to a three-way intersection marked with several signs, including one pointing back to 'Hobart Beach Camping Area'.

From the intersection, the walk continues straight along the track, following the 'Bondi Lake' sign through the melaleuca. The track soon comes to another three-way intersection, marked with another sign pointing back to 'Hobart Beach Camping Area'.

Continue straight: From this intersection, this walk heads south along the track, following the 'Bondi Lake' sign through the melaleuca. The track soon comes to then crosses the dirt Bournda Rd to the 'Hobart Beach Camping Area 0.5km'sign on the otherside.



Int. Bournda Rd and Hobart Beach Rd to Bournda Beach car park 1.7km 25 mins

(From 0.41 km) Continue straight: From the road, this walk follows the sign to 'Bondi Lake' between the timber posts and along the wide track. The track winds through the tall heath for a while until passing an old hut (on the left) where the track comes to a three way intersection marked with a 'hobart beach camp' sign pointing back along the track.

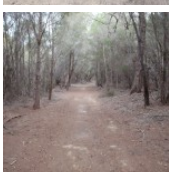
From the intersection, this walk follows the 'bournda lagoon' sign along with wide track. The track passes along the side of Bondi Lake (not visible on the left) to come to a faint intersection with the signposted 'Field Studies Huts' track (on the right).

Continue straight: From the intersection, this walk leaves the hill and the 'Field Studies Huts' sign behind, on the right of the track, as the track continues through the heath, heading up a slight rise to a signposted intersection in Bournda Beach car park.



Bournda Beach car park to Int Bournda Rd and Bournda Beach Parking Area 0.1km 1 mins

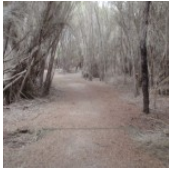
(From 2.11 km) Continue straight: From the intersection, the walk follows the 'Bournda Lagoon' sign up the hill to the signposted intersection with a management trail.



Bournda Lagoon Carpark to Bournda Lagoon 0.3km 5 mins

(From 2.19 km) Turn left: From the gate, this walk heads up through the car park following the 'Hobart Beach Camping Area' arrow on the signpost. The trail comes to a signpost for 'Bournda Beach Parking Area'.

Veer left: From the car park, the walk heads past the gate following the sign to 'Bournda Lagoon' past the toilet. The walk heads down the hill, becoming more sandy as it comes to meet the lagoon shore.



Bournda Lagoon

Bournda Lagoon has formed behind Bournda Beach, between Tathra and Merimbula in Bournda National Park. The lagoon is deep enough for swimming and is a popular spot for a freshwater swim. The lagoon is fed by Sandy Beach Creek, which has been silted up at the southernmost end of Bournda Beach. The lagoon supports a variety of environments, including a rainforest, on its shores. However, the lagoon is subject to environmental issues such as algal blooms. The lagoon can be accessed by bush track from Bournda Lagoon car park, at the end of Bournda Rd. [More info](#)



Bournda Lagoon to Bournda Bch Sth 0.5km 5 mins

(From 2.48 km) Continue straight: From the lagoon, this walk heads over the dunes towards the ocean, keeping the lagoon behind on the right. The walk turns right on the beach, keeping the ocean to the left, and follows the beach to the end where there is a signposted intersection.



Bournda Bch Sth to Bournda Island 0.5km 5 mins

(From 2.93 km) Continue straight: From the intersection, this walk follows the sign to 'Bournda Island' and 'North Tura Beach' up the hill, passing a grassy platform on the left (which has great views over Bournda Island). The walk leads along the top of the dunes, along the fenced track to an intersection with a sign pointing back to 'Bournda Island' and 'Bournda Lagoon'.



Turn left: From the intersection, the walk follows the sign to 'Bournda Island' over the dune and down some stairs onto the beach.

Veer left: From the bottom of the steps, this walk heads away from the stairs and across the beach towards Bournda Island. The walk continues along the sand to a small cave feature at the base of the island.

Veer right: From the intersection, the walk keeps the cave feature on the right and climbs up the ridge of rock. The track winds along the left-hand side of the island, with the ocean below on the left. The walk heads up onto the hill with views of both North Tura and Bournda Beaches.



Bournda Island

Bournda Island separates Bournda and North Tura beaches, and is located between Tathra and Merimbula. The island is joined to the mainland by a tombola beach, which can be submerged by the tide to form a real island. Bournda Island is covered in low dune shrub vegetation species that are perched on top of the rocky island. Access to the island is at low tide from Bournda or North Tura beaches. Bournda Island can also be accessed from the Bournda Lagoon via Headland Track.



Bournda Island to Bournda Island Trk 0.1km 1 mins

(From 3.39 km) Turn around: From the top of Bournda Island, the walk heads towards the mainland, tending closer to the ocean on the right side. The walk then heads down a steep, vegetated track and follows a rocky ridge onto the sand below.



Bournda Bch Sth to Bournda Bch Sth 0.9km 10 mins

(From 3.44 km) Veer right: From the intersection, the walk heads towards the ocean, across the end of the beach, then crosses the rocky headland to continue along a shorter beach, keeping the ocean to the left, to an island like feature. The intersection is marked by a cave feature at the bottom of the island. (This route is only possible at low tide).

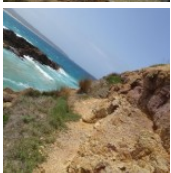
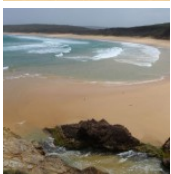
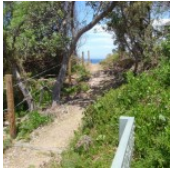
Turn right: From the intersection at the southern end of the beach, the walk heads along the beach, keeping the ocean to the right, and the dunes to the left. The walk continues past views of Bournda Lagoon to a spot opposite a set of stairs (going up the taller dunes on the left).



Bournda Beach

Bournda Beach, Bournda National Park, lies between Tathra and Merimbula, and forms the southern end of Wallagoot Beach. The beach provides some good surf conditions with a south-easterly aspect (not patrolled). At the southern end of the beach is Bournda Island, attached to the beach by a rocky headland and tombola (sand joining the island to mainland). The dunes backing the beach are undergoing rehabilitation. Bournda Beach is accessed by Bournda Rd at either Hobart Beach camping area, Bournda Lagoon or Wallagoot Gap parking areas.





Bournda Beach to Ocean beaches carpark Trk 2.5km 35 mins

(From 4.33 km) Continue straight: From the middle of the beach, opposite a set of erosion control steps, the walk heads along the beach, keeping the ocean to the right. The walk continues along the beach until it comes opposite a set of erosion control steps to the left.

Continue straight: From the middle of the beach, across from a set of erosion control steps, the walk heads along the beach, keeping the ocean to the right. The walk continues along the beach for quite some time to a point opposite a set of erosion control steps going up the dunes to the left.

Turn left: From the intersection, this walk heads away from the beach and up the erosion control stairs. The walk then heads down the stairs onto a sandy clear trail which winds through the bush. The track soon meets a signposted intersection.

Ocean beaches carpark Trk to Wallagoot Lake Shore (Hobart Beach) 0.4km 5 mins

(From 6.8 km) Turn left: From the intersection, this walk follows the sign to the 'Parking Area' along the sandy track, towards the distant hills. The walk winds through the melaleuca, some of which are on the track. The soon comes to a timber boardwalk and a three way intersection with a 'Ocean Beaches' sign pointing back along the track.

From the intersection, this walk follows the 'Hobart Beach camp' sign off the end of the board walk to the come to a car park a short distance later. At the carpark the walk turns right to find a signposted intersection next to the picnic table.

Turn right: From the intersection, this walk follows the arrow on the sign to 'Wallagoot Lake', away from the car park and picnic table. The track tends right, down the hill, for approximately 50m to an intersection on the shore of Wallagoot Lake.

Hobart Beach

Hobart Beach is located on the southern shores of Wallagoot Lake, between Tathra and Merimbula. Hobart Beach extends from the sand dunes to Scotts Bay, on Wallagoot Lake. The beach is a thin slice of white sand between the treeline and the lake, and provides plenty of opportunity to go for a swim and enjoy the water. Access to the beach is through Hobart Beach camping area, off Bournda Rd in Bournda National Park.

Wallagoot Lake Shore (Hobart Beach) to Hobart Beach large shelter 0.3km 5 mins

(From 7.23 km) Turn sharp left: From the intersection, the walk heads away from Wallagoot Lake, keeping it a bit to the right for a short time, passing a post with a red reflective marker. The track tends right, away from the lake and the beach, to come into view of a clearing, the campsite, on the left. The track continues to an area with cut logs on the ground. The walk passes these logs, continuing to the main road, to the right of large triangular shelter where there is a signpost.

A list of paper topographical maps that cover this walk

[Wolumla](#) 1:25 000 Map Series

Bega 1:100 000 Map Series

Nearby outdoor and camping stores

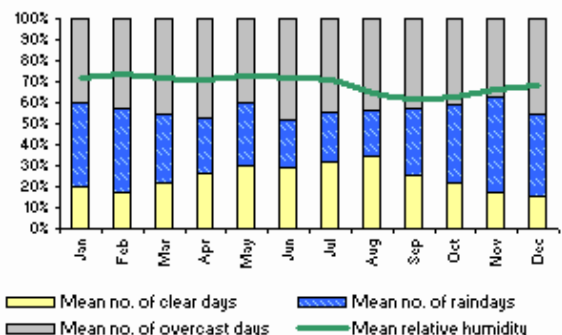
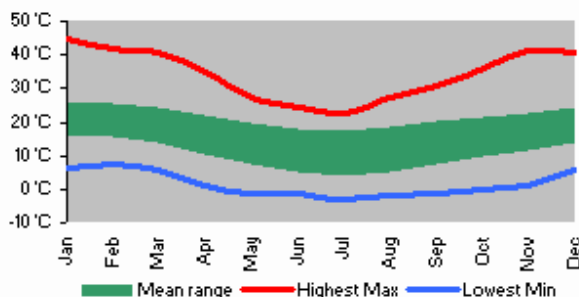
Camping Plus 6 Alice St Merimbula (02) 6495 2571

Gas Connection The Arthur Kaine Drv Pambula (02) 6495 7121

Barbeques Galore (Bega) 274 Carp St Bega (02) 6492 4054

Camping Outdoors Centre 43 Vulcan St Moruya (02) 4474 3081

Gone Fishin Cnr Ford & Queen Sts Moruya (02) 4474 4381





Hobart Beach to Bournda Island Loop

This space is available for advertising



Full colour Great photos



Give the joy of walking to a friend (and support wildwalks)

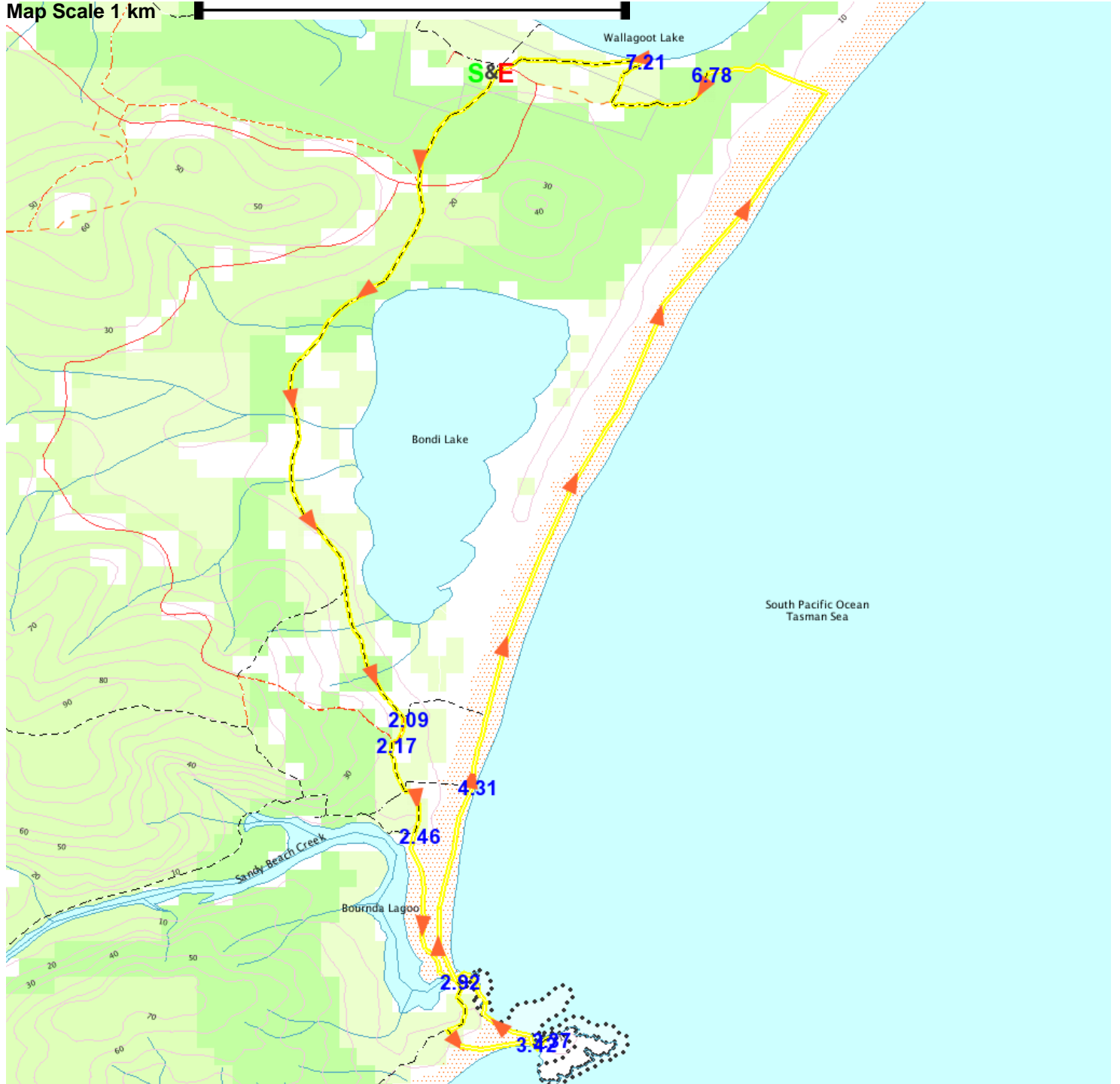
www.wildwalks.com/books.html



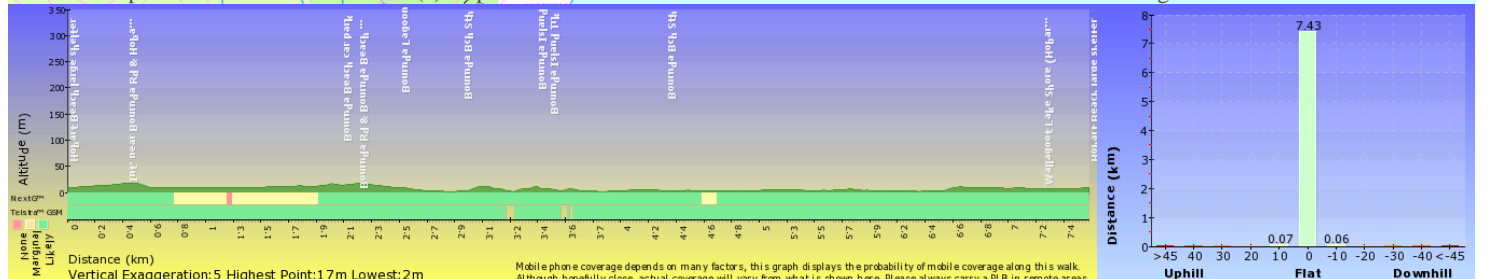
A walk for every body



Map Scale 1 km



Base map is used under licence and is (c) Department of lands Panorama Avenue Bathurst 2795 www.lands.nsw.gov.au



Mobile phone coverage depends on many factors, this graph displays the probability of mobile coverage along this walk. Although hopefully close, actual coverage will vary from what is shown here. Please always carry a PLB in remote areas.