



This walk is a great way to explore Hobart Beach as it leaves the popular camping area to follow along the shore of Wallagoot Lake. The track is soft underfoot with most of the walk on sand. This is great way to enjoy the shore of Wallagoot Lake.

Bournda National Park

**Length:** 1.2 km  
**Time:** 45 mins  
**Climb:** 1 m  
**Style:** Circuit  
**Rating:** Track: Moderate  
**Where:** 7.5 km SSW of Tathra  
**Transport:** car



Visit [www.wildwalks.com](http://www.wildwalks.com) for more info



*Side trips and Alternate routes mentioned in these notes are not included in the tracks overall rating, distance or time estimate. The notes only describe the side trips and Alternate routes in one direction. Allow extra time for resting and exploring areas of interest. Please ensure you and your group are well prepared and equipped for all possible hazards and delays. The authors, staff and owners of wildwalks take care in preparing these notes but will not accept responsibility for any inconvenience, loss or injury sustained by using these notes or maps. Please take care and share your experience through the website. Please check park closures, weather information and Fire Danger Rating just before leaving for your walk. Walk maybe closed during Total Fire Ban. GPS for start and end of this walk: -36.797,149.94*

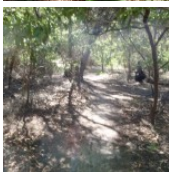


### Wildwalks

Download the free [Bushwalk Australia eMag](http://bushwalk.com)

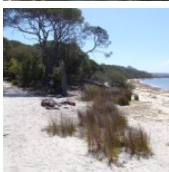
The eMagazine is produced by the community at [bushwalk.com](http://bushwalk.com) and the Wildwalks team  
[Bushwalk.com](http://bushwalk.com) Australia's most active bushwalking forum - Check it out.

Happy Reading. Matt :)



### Hobart Beach campground

This is a well-established campsite close to the beach and lake. There are garbage and recycling bins. Each camping space is well-defined and there is a large covered common area. The camp surrounds the stone and timber toilet and laundry facility.



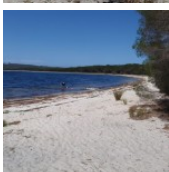
### Hobart Beach large shelter to Wallagoot Lake Shore (Hobart Beach) 0.3km 5 mins

(From S) From the shelter, the walk crosses the road (away from the face of the signpost and shelter). The track follows the road into the campsites, turning right immediately through the logs. The track then continues away from the campsites, with the lake and beach coming into view on the left. The track continues to tend left towards the lake, where it comes to a clearing just behind Hobart Beach.



### Wallagoot Lake (Lagoon)

Wallagoot Lake, Bournda National Park, is located between Tathra and Merimbula on the Sapphire Coast Drive. Wallagoot Lake is a large expanse of water, although it is only two to three metres deep. The lake's catchment is found predominantly within Bournda National Park, the main tributary being Moncks Creek. The lake is blocked from the ocean by sand dunes on the eastern end - these dunes are broken intermittently, connecting the lake with the sea. Wallagoot Lake is home to many bird species including Black Swans and a threatened Tern.

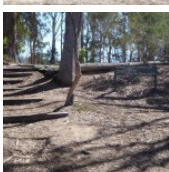


The lake is a popular spot for picnics and other recreation. Hobart Beach camping area lies on the southern shore of the lake, and on the northern edge lies the Wallagoot Lake Boat Club, with its parking, and also a picnic area, providing plenty of opportunities to enjoy the lake. Wallagoot Lake can be accessed by Wallagoot Lake Rd off the Sapphire Coast Drive. [More info](#)



### Hobart Beach

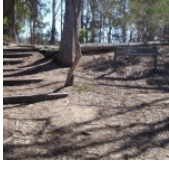
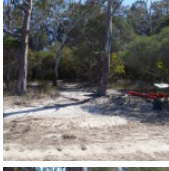
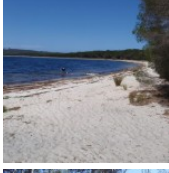
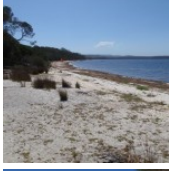
Hobart Beach is located on the southern shores of Wallagoot Lake, in Bournda NP between Tathra and Merimbula. Hobart Beach expands from the sand dunes to Scotts Bay on Wallagoot Lake. The beach is a thin slice of white sand between the treeline and the lake, providing a nice opportunity to enjoy the water. Access to the beach is through Hobart Beach camping area, off Bournda Rd in Bournda National Park.



### Wallagoot Lake Shore (Hobart Beach) to Int. Hobart Lagoon and Hobart Campground Trks 0.5km 5 mins

(From 0.33 km) Turn sharp left: From the intersection, the walk follows the track along the shore line keeping Wallagoot Lake to the right. The track soon comes to a three way intersection marked with a 'Walking track' sign.

Continue straight: From the intersection, this walk follows a track along the shore keeping Wallagoot Lake to the right. Soon the track leads to a three way intersection with a 'Ocean Beaches' sign pointing back (and a set of steps on the left).



**Int. Hobart Lagoon and Hobart Campground Trks to Hobart Beach large shelter** 0.4km 5 mins

(From 0.84 km) Turn left: From the intersection, this walk heads up the stairs following the 'Hobart Beach Camping Area' sign. At the road continues straight to soon turn left at the 'T' intersection (heading away from 'Sites 36-54'). Soon this road leads to to a large green-roofed, wooden building, the toilet block.

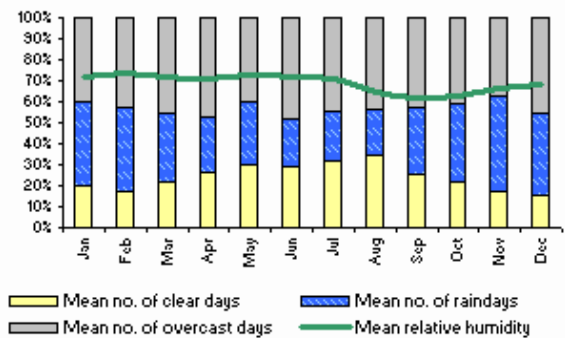
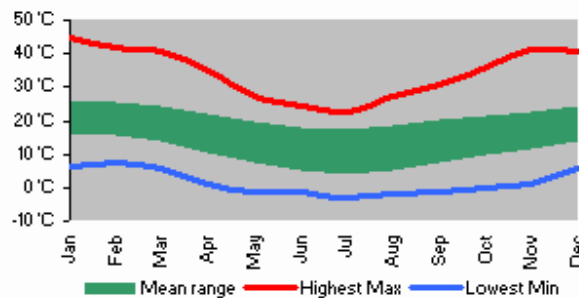
Continue straight: From the intersection in front of the toilet block, the walk follows the dirt road (leaving the toilet block behind on the left). The walk follows the dirt road for a short distance to a signposted intersection (with a footpath) beside a large, open shelter. The shelter covers a number of picnic tables.

**A list of paper topographical maps that cover this walk**

- [Wolumla](#) 1:25 000 Map Series
- Bega 1:100 000 Map Series

**Nearby outdoor and camping stores**

- Camping Plus** 6 Alice St Merimbula (02) 6495 2571
- Gas Connection The** Arthur Kaine Drv Pambula (02) 6495 7121
- Barbeques Galore (Bega)** 274 Carp St Bega (02) 6492 4054
- Camping Outdoors Centre** 43 Vulcan St Moruya (02) 4474 3081
- Gone Fishin** Cnr Ford & Queen Sts Moruya (02) 4474 4381



This space is available for advertising



Full colour  
Great photos



Give the joy of walking to a friend  
(and support wildwalks)

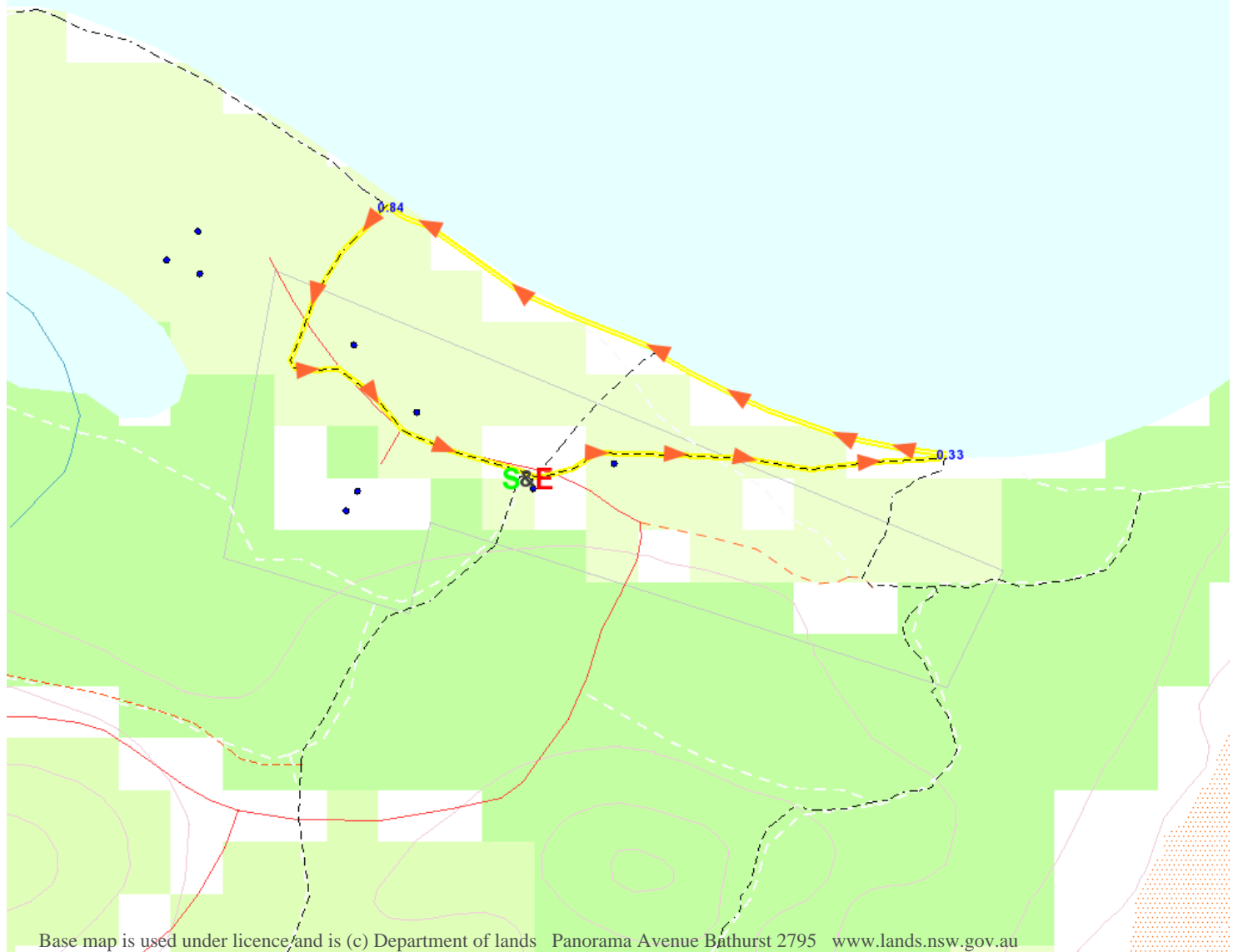
[www.wildwalks.com/books.html](http://www.wildwalks.com/books.html)



A walk for every body



Map Scale 500 m



Base map is used under licence and is (c) Department of lands Panorama Avenue Bathurst 2795 www.lands.nsw.gov.au

