



From Hobart Beach camping area, this walk passes the hidden Bondi Lake to come to Bournda Lagoon. The lagoon is a wonderful oasis with the deep pool and sandy, shaded edges making a really pleasant area. The proximity to Bournda Beach also creates the opportunity to have a body surf. The track to Bournda Lagoon is well signposted from Hobart Beach camping area.

Bournda National Park

Length: 5 km
Time: 1 hr 30 mins
Climb: 43 m
Style: Return
Rating: Track: Moderate
Where: 10.6 km NNE of Merimbula
Transport: car



Visit www.wildwalks.com for more info



Side trips and Alternate routes mentioned in these notes are not included in the tracks overall rating, distance or time estimate. The notes only describe the side trips and Alternate routes in one direction. Allow extra time for resting and exploring areas of interest. Please ensure you and your group are well prepared and equipped for all possible hazards and delays. The authors, staff and owners of wildwalks take care in preparing these notes but will not accept responsibility for any inconvenience, loss or injury sustained by using these notes or maps. Please take care and share your experience through the website. Please check park closures, weather information and Fire Danger Rating just before leaving for your walk. Walk maybe closed during Total Fire Ban. GPS for start and end of this walk: -36.797,149.94



Wildwalks

Download the free Bushwalk Australia eMag

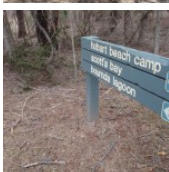
The eMagazine is produced by the community at bushwalk.com and the Wildwalks team
Bushwalk.com Australia's most active bushwalking forum - Check it out.

Happy Reading. Matt :)



Hobart Beach campground

This is a well-established campsite close to the beach and lake. There are garbage and recycling bins. Each camping space is well-defined and there is a large covered common area. The camp surrounds the stone and timber toilet and laundry facility.

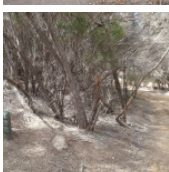
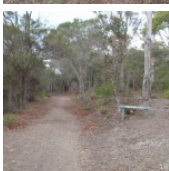


Hobart Beach large shelter to Int. near Bournda Rd and Hobart Beach Rd 0.4km 5 mins

(From S) From the intersection, this walk follows the path and the sign to the 'Field Study Huts' past the large picnic shelter (on the left). The track soon passes a volleyball court (on the right) and a fire pit (on the left), then follows a track marker through the dense melaleuca. The track soon comes to a three-way intersection marked with several signs, including one pointing back to 'Hobart Beach Camping Area'.

From the intersection, the walk continues straight along the track, following the 'Bondi Lake' sign through the melaleuca. The track soon comes to another three-way intersection, marked with another sign pointing back to 'Hobart Beach Camping Area'.

Continue straight: From this intersection, this walk heads south along the track, following the 'Bondi Lake' sign through the melaleuca. The track soon comes to then crosses the dirt Bournda Rd to the 'Hobart Beach Camping Area 0.5km' sign on the otherside.

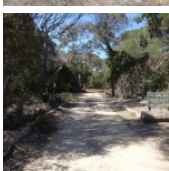


Int. Bournda Rd and Hobart Beach Rd to Bournda Beach car park 1.7km 25 mins

(From 0.41 km) Continue straight: From the road, this walk follows the sign to 'Bondi Lake' between the timber posts and along the wide track. The track winds through the tall heath for a while until passing an old hut (on the left) where the track comes to a three way intersection marked with a 'hobart beach camp' sign pointing back along the track.

From the intersection, this walk follows the 'bournda lagoon' sign along with wide track. The track passes along the side of Bondi Lake (not visible on the left) to come to a faint intersection with the signposted 'Field Studies Huts' track (on the right).

Continue straight: From the intersection, this walk leaves the hill and the 'Field Studies Huts' sign behind, on the right of the track, as the track continues through the heath, heading up a slight rise to a signposted intersection in Bournda Beach car park.

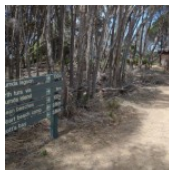


Bournda Beach car park to Int Bournda Rd and Bournda Beach Parking Area 0.1km 1 mins

(From 2.11 km) Continue straight: From the intersection, the walk follows the 'Bournda Lagoon' sign up the hill to the signposted intersection with a management trail.

Bournda Lagoon Carpark to Int. Bournda Rd and Bournda Beach Parking Area 0.1km 3 mins

(From 2.19 km) Turn left: From the gate, this walk heads up through the car park following the 'Hobart Beach Camping Area' arrow on the signpost. The trail comes to a signpost for 'Bournda Beach Parking Area'.



Bournda Beach picnic area

Bournda Beach picnic area is found next to Bournda Lagoon car park, in Bournda National Park. The picnic area is shaded by the trees behind Bournda Beach, which is between Tathra and Merimbula. The picnic area has modest facilities with a few picnic tables, BBQ pit and a toilet nearby. The picnic area is a great place to eat lunch before heading down to Bournda Beach or Lagoon, which are only a stroll away through the bush.



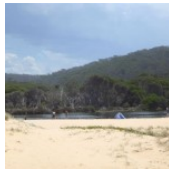
Bournda Lagoon Car Park to Bournda Lagoon 0.1km 2 mins

(From 2.34 km) Veer left: From the car park, the walk heads past the gate following the sign to 'Bournda Lagoon' past the toilet. The walk heads down the hill, becoming more sandy as it comes to meet the lagoon shore.



Bournda Lagoon

Bournda Lagoon has formed behind Bournda Beach, between Tathra and Merimbula in Bournda National Park. The lagoon is deep enough for swimming and is a popular spot for a freshwater swim. The lagoon is fed by Sandy Beach Creek, which has been silted up at the southernmost end of Bournda Beach. The lagoon supports a variety of environments, including a rainforest, on its shores. However, the lagoon is subject to environmental issues such as algal blooms. The lagoon can be accessed by bush track from Bournda Lagoon car park, at the end of Bournda Rd. [More info](#)



Bournda Beach

Bournda Beach, Bournda National Park, lies between Tathra and Merimbula, and forms the southern end of Wallagoot Beach. The beach provides some good surf conditions with a south-easterly aspect (not patrolled). At the southern end of the beach is Bournda Island, attached to the beach by a rocky headland and tombola (sand joining the island to mainland). The dunes backing the beach are undergoing rehabilitation. Bournda Beach is accessed by Bournda Rd at either Hobart Beach camping area, Bournda Lagoon or Wallagoot Gap parking areas.



This is a 'Return' style walk - retrace your steps back to the beginning when you are ready.

A list of paper topographical maps that cover this walk

[Wolumla](#) 1:25 000 Map Series

Bega 1:100 000 Map Series



Nearby outdoor and camping stores

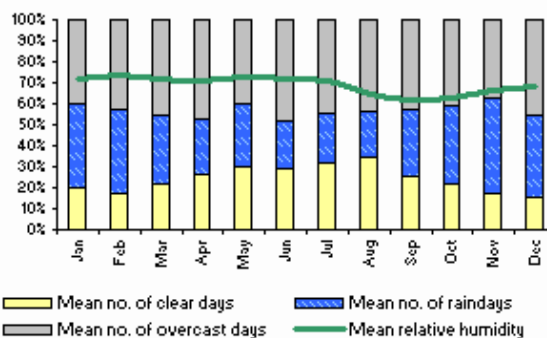
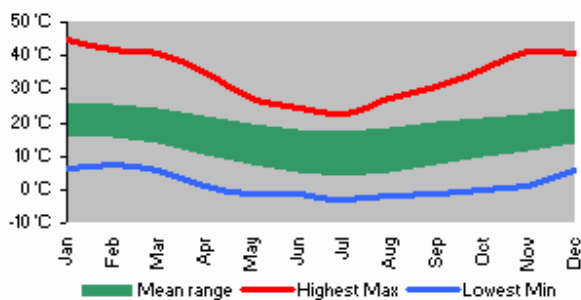
Camping Plus 6 Alice St Merimbula (02) 6495 2571

Gas Connection The Arthur Kaine Drv Pambula (02) 6495 7121

Barbeques Galore (Bega) 274 Carp St Bega (02) 6492 4054

Camping Outdoors Centre 43 Vulcan St Moruya (02) 4474 3081

Gone Fishin Cnr Ford & Queen Sts Moruya (02) 4474 4381





wild
walks

Hobart Beach camping area to Bournda Lagoon

This space is available for advertising



Full colour
Great photos



Give the joy of walking to a friend
(and support wildwalks)

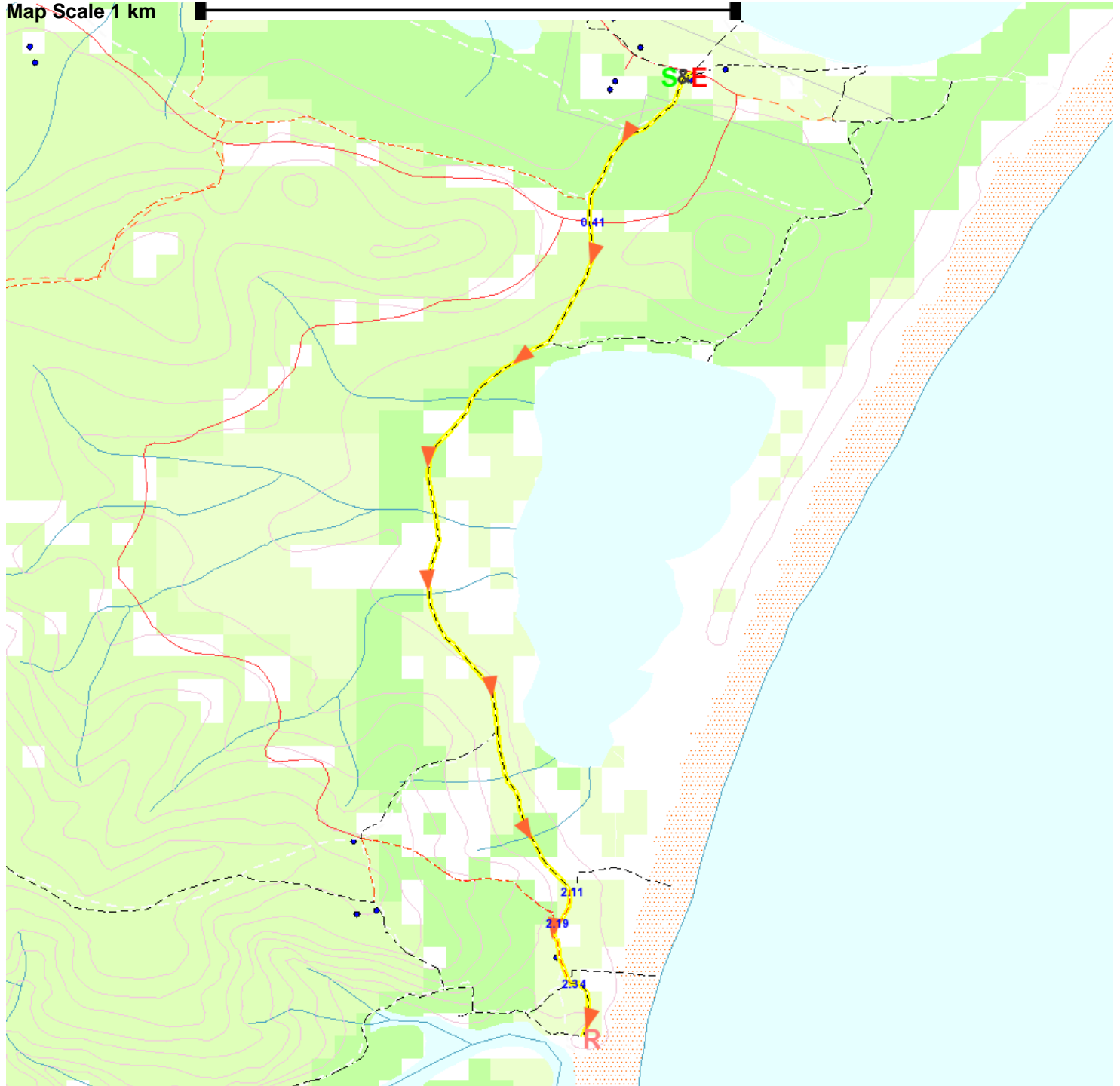
www.wildwalks.com/books.html



A walk for every body



Map Scale 1 km



Base map is used under licence and is (c) Department of lands Panorama Avenue Bathurst 2795 www.lands.nsw.gov.au

