



The walk from Hobart Beach camping area to Bondi Lake is an interesting one, mostly running parallel to the lake, which you can't see, till the very end. The walk is shaded for most of the way due to the thick heath surrounding the track until it opens out onto Bondi Lake (dry when we walked it).

Bournda National Park

Length: 5 km
Time: 1 hr 45 mins
Climb: 42 m
Style: Return
Rating: Route: Hard
Where: 7.5 km SSW of Tathra
Transport: car



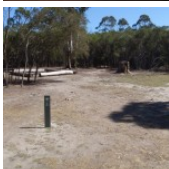
Visit www.wildwalks.com for more info



Side trips and Alternate routes mentioned in these notes are not included in the tracks overall rating, distance or time estimate. The notes only describe the side trips and Alternate routes in one direction. Allow extra time for resting and exploring areas of interest. Please ensure you and your group are well prepared and equipped for all possible hazards and delays. The authors, staff and owners of wildwalks take care in preparing these notes but will not accept responsibility for any inconvenience, loss or injury sustained by using these notes or maps. Please take care and share your experience through the website. Please check park closures, weather information and Fire Danger Rating just before leaving for your walk. Walk maybe closed during Total Fire Ban. GPS for start and end of this walk: -36.797,149.94



This walk passes through a remote area and sections have no visible track. At least one person in your group should have training and experience in off track walking and navigation. Even with these notes and a GPS these extra skills and equipment are required.



Wildwalks

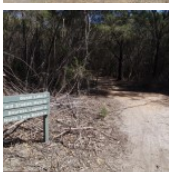
Download the free [Bushwalk Australia eMag](http://bushwalk.com)

The eMagazine is produced by the community at bushwalk.com and the Wildwalks team Bushwalk.com Australia's most active bushwalking forum - Check it out.

Happy Reading. Matt :)

Hobart Beach campground

This is a well-established campsite close to the beach and lake. There are garbage and recycling bins. Each camping space is well-defined and there is a large covered common area. The camp surrounds the stone and timber toilet and laundry facility.



Hobart Beach large shelter to Int. near Bournda Rd and Hobart Beach Rd 0.4km 5 mins

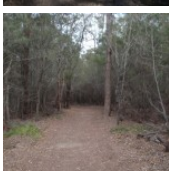
(From S) From the intersection, this walk follows the path and the sign to the 'Field Study Huts' past the large picnic shelter (on the left). The track soon passes a volleyball court (on the right) and a fire pit (on the left), then follows a track marker through the dense melaleuca. The track soon comes to a three-way intersection marked with several signs, including one pointing back to 'Hobart Beach Camping Area'.



From the intersection, the walk continues straight along the track, following the 'Bondi Lake' sign through the melaleuca. The track soon comes to another three-way intersection, marked with another sign pointing back to 'Hobart Beach Camping Area'.

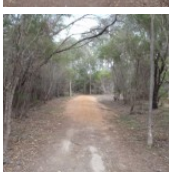


Continue straight: From this intersection, this walk heads south along the track, following the 'Bondi Lake' sign through the melaleuca. The track soon comes to then crosses the dirt Bournda Rd to the 'Hobart Beach Camping Area 0.5km'sign on the otherside.



Int. Bournda Rd and Hobart Beach Rd to Int. Bondi Lake and Bournda Bch Trks 1.8km 25 mins

(From 0.41 km) Continue straight: From the road, this walk follows the sign to 'Bondi Lake' between the timber posts and along the wide track. The track winds through the tall heath for a while until passing an old hut (on the left) where the track comes to a three way intersection marked with a 'hobart beach camp' sign pointing back along the track.



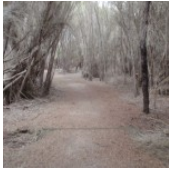
From the intersection, this walk follows the 'bournda lagoon' sign along with wide track. The track passes along the side of Bondi Lake (not visible on the left) to come to a faint intersection with the signposted 'Field Studies Huts' track (on the right).

Continue straight: From the intersection, this walk leaves the hill and the 'Field Studies Huts' sign behind, on the right of the track, as the track continues through the heath, heading up a slight rise to a signposted intersection in Bournda Beach car park.

Turn left : From the car park, this walk heads between the trees at the point where three short vertical logs mark the track. The track heads down through the bush to the base of a set of stairs.

Int Bondi Lake and Bournda Bch Trks to Bondi Lake Sth 0.3km 4 mins

(From 2.22 km) Turn left: From the bottom of the stairs, the walk keeps the bottom of the dunes to the right for some time and then tends to the left through the trees. The track winds through the trees to open out onto the large treeless clearing of Bondi Lake.



Bondi Lake

Bondi Lake lies south of Tathra, behind Bournda Beach in Bournda National Park. The lake, when filled, is a shallow body of fresh water, which is fed by streams all found within the National Park. The lake, when dry, resembles a paddock with many kangaroos grazing in the middle of the dry lake. The lake can be accessed by bush tracks from Bournda Lagoon car park or Hobart Beach camping area.



This is a 'Return' style walk - retrace your steps back to the beginning when you are ready.

A list of paper topographical maps that cover this walk

[Wolumla](#) 1:25 000 Map Series

Bega 1:100 000 Map Series



Nearby outdoor and camping stores

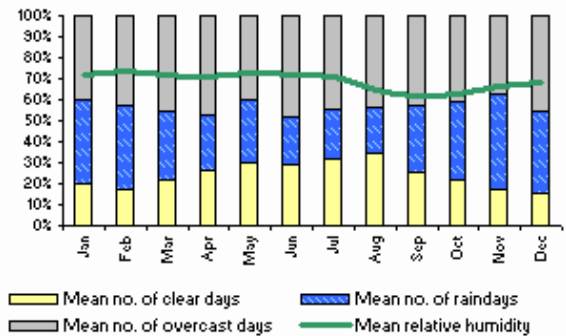
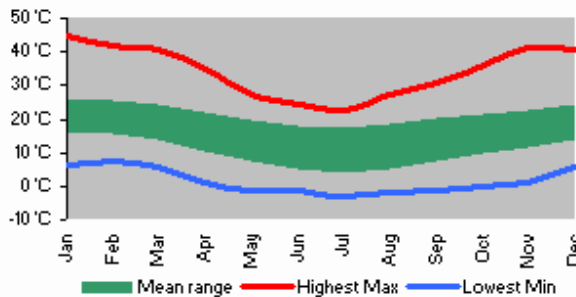
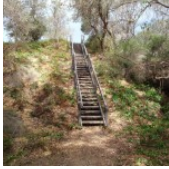
Camping Plus 6 Alice St Merimbula (02) 6495 2571

Gas Connection The Arthur Kaine Drv Pambula (02) 6495 7121

Barbeques Galore (Bega) 274 Carp St Bega (02) 6492 4054

Camping Outdoors Centre 43 Vulcan St Moruya (02) 4474 3081

Gone Fishin Cnr Ford & Queen Sts Moruya (02) 4474 4381





Hobart Beach camping area to Bondi Lake

This space is available for advertising



Full colour
Great photos



Give the joy of walking to a friend
(and support wildwalks)

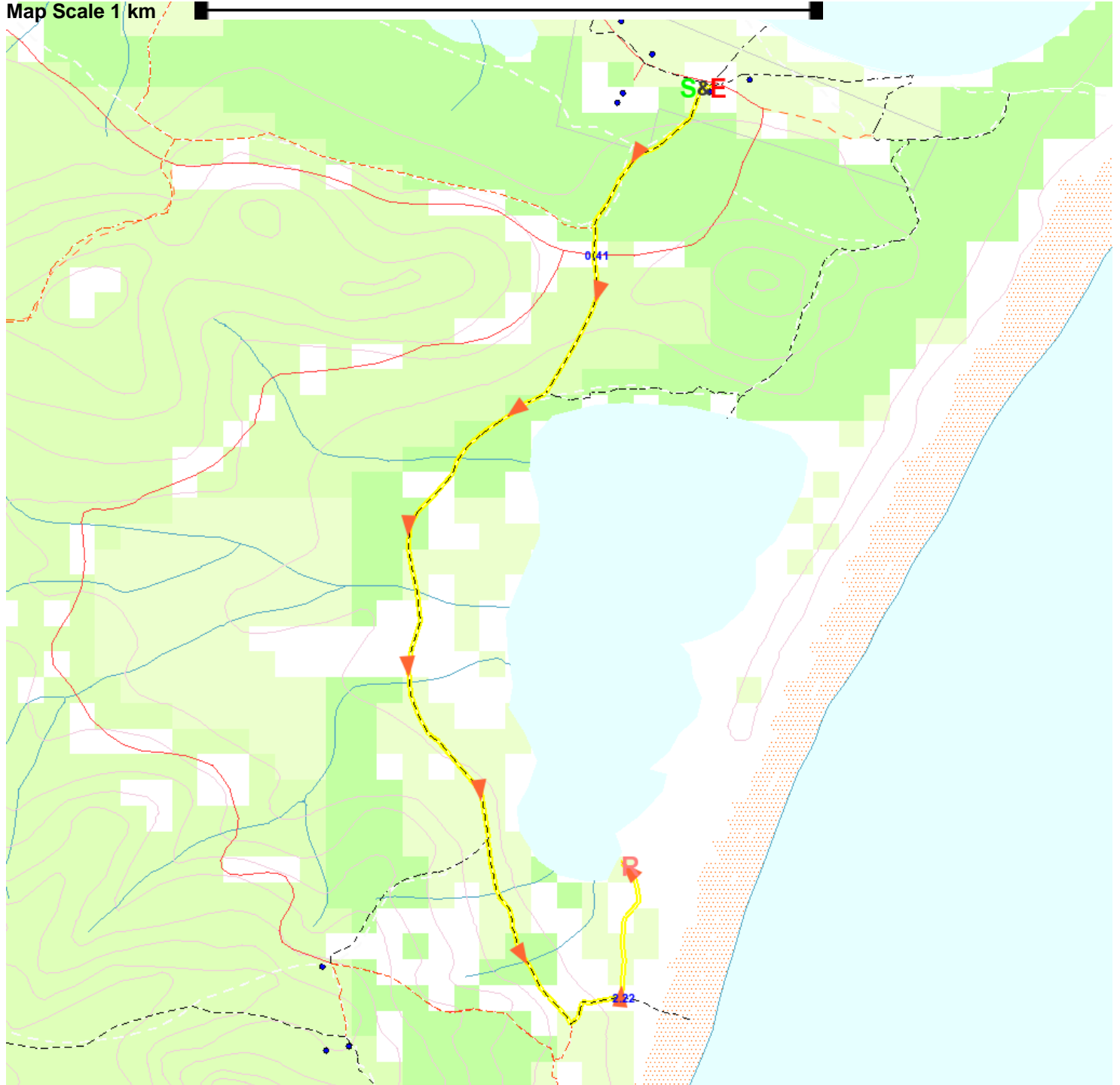
www.wildwalks.com/books.html



A walk for every body



Map Scale 1 km



Base map is used under licence and is (c) Department of lands Panorama Avenue Bathurst 2795 www.lands.nsw.gov.au

