



This is a surprisingly spectacular walk, following the base of the cliff below St Johns Lookout. From the car park, you will follow a gentle track through the bush before heading down some stairs to the cliff face. Handrails and timber walkways have been installed to make this walk more accessible. You will pass some large Angophora, Blackbutts and plenty of fern trees. A highlight of the walk comes when you follow the ledge next right next to the cliff.

Katandra Reserve

Length: 1.2 km
Time: 45 mins
Climb: 80 m
Style: Circuit
Rating: Track: Moderate
Where: 3.4 km SE of Lisarow
Transport: car



Visit www.wildwalks.com for more info



Side trips and Alternate routes mentioned in these notes are not included in the tracks overall rating, distance or time estimate. The notes only describe the side trips and Alternate routes in one direction. Allow extra time for resting and exploring areas of interest. Please ensure you and your group are well prepared and equipped for all possible hazards and delays. The authors, staff and owners of wildwalks take care in preparing these notes but will not accept responsibility for any inconvenience, loss or injury sustained by using these notes or maps. Please take care and share your experience through the website. Please check park closures, weather information and Fire Danger Rating just before leaving for your walk. Walk maybe closed during Total Fire Ban. GPS for start and end of this walk: -33.4065,151.3901



Wildwalks

Download the free Bushwalk Australia eMag

The eMagazine is produced by the community at bushwalk.com and the Wildwalks team
Bushwalk.com Australia's most active bushwalking forum - Check it out.

Happy Reading. Matt :)



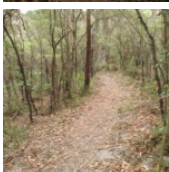
St Johns Lookout car park to Southern end of Guringai walk 0.1km 1 mins

(From S) From the car park, this walk heads across the clearing away from the main picnic area (keeping the road up the hill to the right). The walk soon comes to an intersection and a 'Guringai walk' sign.



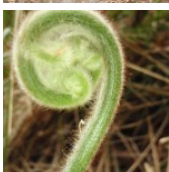
Southern end of Guringai walk to Post 8 0.4km 10 mins

(From 0.08 km) Veer left: From the intersection, this walk follows the 'Guringai Walk' sign down the gentle hill. The walk passes some grass trees and angophoras as it zigzags down the hill. Soon after the track crosses a small timber bridge, the walk follows the base of the cliff until coming to the number '8' post marking a large Blackbutt tree.



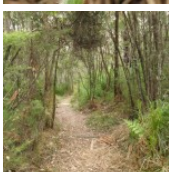
Blackbutt

This Blackbutt tree is found at the base of the cliff next to post 8 on Guringai walk. The *Eucalyptus pilularis* is the scientific name for this tree that can grow as high as 70m. The tree has a brown fibrous bark on the lower half then a smooth grey bark at the top. The tree's name 'pilularis' is Latin for small pill, referring to the tree's fruit



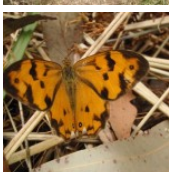
Post 8 to Int of Toomey and Guringai Walks 0.4km 10 mins

(From 0.51 km) Continue straight: From post '8', this walk heads down along the track, keeping the valley to the right. The track follows the base of the cliff and, soon after climbing over a rise and coming very close to the cliff, the walk passes a section with broken glass (this is directly below St Johns Lookout). The walk continues along the base of the cliff then up a series of stairs. Just after flattening out, the track comes to a signposted intersection, with a sign pointing back along 'Guringai Walk'.



Int of Toomey and Guringai Walks to Upper Int of Toomey walk and Katandra Horse track 0.1km 2 mins

(From 0.87 km) Turn left: From the intersection, this walk follows the 'Lookout' sign up the stairs and turns left. The track soon bends sharply right and then leads past some timber posts, coming to an intersection with the Katandra Horse track.



Upper Int of Toomey walk and Katandra Horse track to Toilet block 0.2km 3 mins

(From 0.94 km) Turn left: From the intersection, this walk heads up the hill and through the gap in the fence to a 'Toomey walk' sign, pointing back down the hill. At this sign, the walk turns left and heads through the picnic area, passed another sign (again pointing back to 'Toomey walk') and comes to a footpath in front of a toilet block.

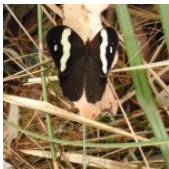
Toilet block to St Johns Lookout 0km 1 mins Optional Side Trip:

(From 1.1 km) Veer left: From the toilet block, this walk follows the footpath past the information sign to the fenced and signposted 'St Johns Lookout'
 (Retrace your steps back to the main track, then turn left to continue along this walk.)



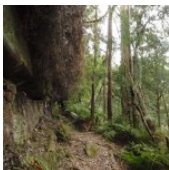
St Johns Lookout

This fenced lookout is found at the top of Katandra Reserve, near the toilets. The lookout was upgraded by Gosford Council in September 2009 and now provides a safer platform and easier access. From the lookout, there are extensive views south-east over Matcham, Erina Heights and Terrigal, out to the ocean. The Guringai Walk passes below the lookout - please take extra care to not drop anything from the platform.



Toilet block to St Johns Lookout car park 0.1km 2 mins

(From 1.1 km) Continue straight: From the toilet block, this walk heads across the picnic area, passing the BBQ and keeping the lookout to the left. The walk soon comes to a information sign and car park (signposted as Katandra on Toomeys Rd).



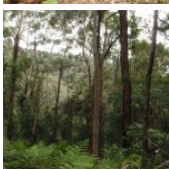
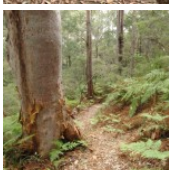
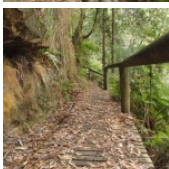
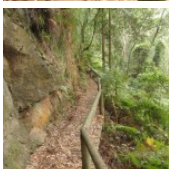
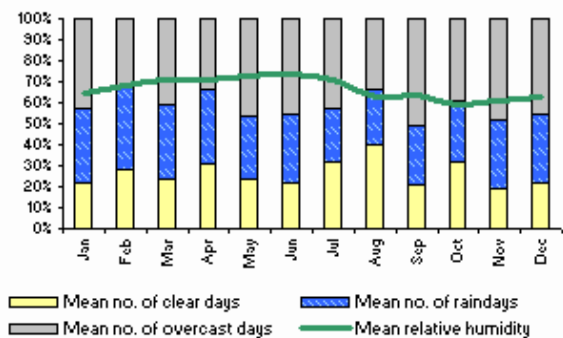
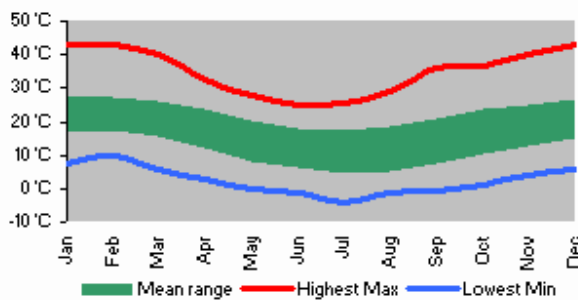
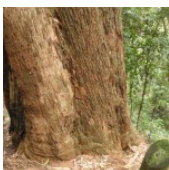
A list of paper topographical maps that cover this walk

- [Gosford 1:25 000 Map Series](#)
- [Gosford 1:100 000 Map Series](#)



Nearby outdoor and camping stores

- Boots Great Outdoors** 201 The Entrance Rd Erina (02) 4367 0396
- Camping World Shop** 18, 482 Pacific Hwy Wyoming (02) 4324 6515
- BCF Australia Pty Ltd** 354 Manns Rd Gosford West (02) 4322 5833
- Mannings Sports** 172 Mann St Gosford (02) 4325 1617
- Kangaroo Tent City & BBQs** Homemakers Supa Centre Cnr Wyong Rd & Bryant Drv Tuggerah (02) 4353 4335



This space is available for advertising



Full colour
Great photos



Give the joy of walking to a friend
(and support wildwalks)

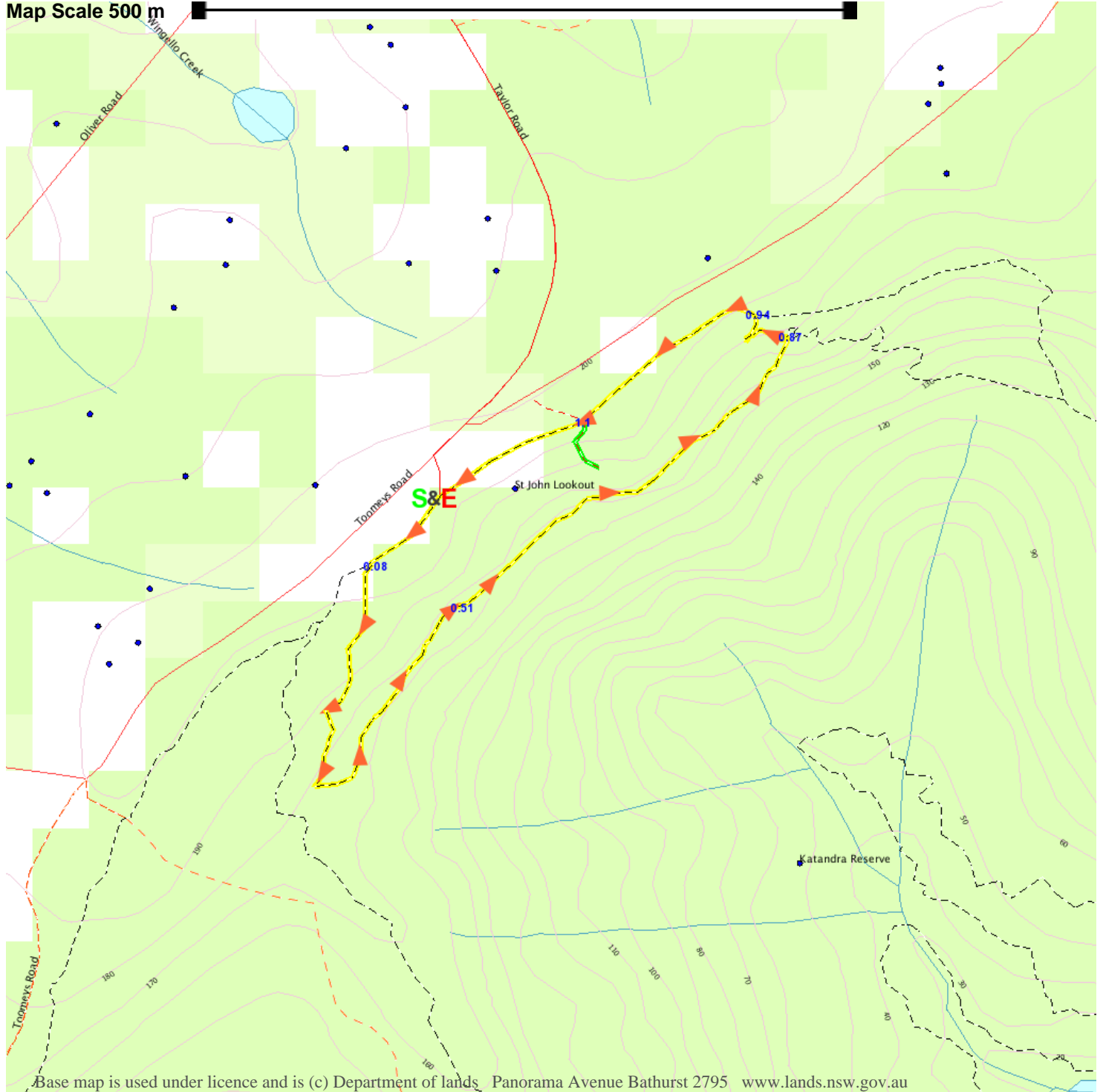
www.wildwalks.com/books.html



A walk for every body



Map Scale 500 m



Base map is used under licence and is (c) Department of lands Panorama Avenue Bathurst 2795 www.lands.nsw.gov.au

