



On this walk, you will circumnavigate Green Point (also known as Laings Point), on Sydney Harbour's South Head. The point is surrounded in history and great harbour views. Starting from the end of Pacific St, you will head through some open parkland and a short side trip leads to Camp Cove, the first landing place for Europeans in Australia. The walk then continues around the grassy headland to visit the eastern anchor point of Sydney's anti-submarine net. A short and enjoyable walk.

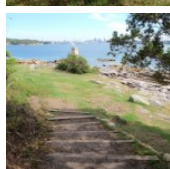
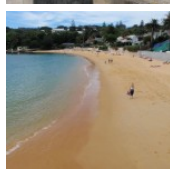
Length: 0.2 km
Time: 15 mins
Climb: 10 m
Style: Circuit
Rating: Walk: Easy
Where: 1.2 km NNW of Watsons Bay
Transport: bus car



Visit www.wildwalks.com for more info

Sydney Harbour National Park

Side trips and Alternate routes mentioned in these notes are not included in the tracks overall rating, distance or time estimate. The notes only describe the side trips and Alternate routes in one direction. Allow extra time for resting and exploring areas of interest. Please ensure you and your group are well prepared and equipped for all possible hazards and delays. The authors, staff and owners of wildwalks take care in preparing these notes but will not accept responsibility for any inconvenience, loss or injury sustained by using these notes or maps. Please take care and share your experience through the website. Please check park closures, weather information and Fire Danger Rating just before leaving for your walk. Walk maybe closed during Total Fire Ban. GPS for start and end of this walk:-33.8408,151.2776



Wildwalks



Download the free [Bushwalk Australia eMag](http://bushwalk.com)

The eMagazine is produced by the community at bushwalk.com and the Wildwalks team

bushwalk.com Australia's most active bushwalking forum - Check it out.

Happy Reading. Matt :)

End of Pacific St to Green (Laings) Point Park 0km 1 mins

(From S) From the end of Pacific St, this walk heads past the large 'Sydney Harbour National Park - Green Point' sign and follows the concrete footpath down the steps to find a monument commemorating the landing of Governor Phillip in 1788 in front of the toilet block.

Green Point Park

Also known as Laings Point, Green Point is a headland on the inside of South Head. The park (at the end of Pacific St) is inside the National Park and is on sloped ground. There is a toilet, great water views, an open grassy area, bench seats and a monument. The monument reminds visitors that Cove Beach (just below) was the first landing place for Governor Phillip in 1788. The park is a pleasant place to rest and is sometimes hired for weddings. A cottage at the top can also be hired from NPWS to make a weekend of your adventures.

Green (Laings) Point Park to Southern End of Camp Cove Beach 0.1km 1 mins **Optional Side Trip:**

(From 0.03 km) Turn right: From the monument commemorating the landing of Governor Phillip in 1788, in the middle of Green Point Park, this walk heads down the concrete path and steps, heading directly away from the brick toilet block. The path soon heads down a timber staircase to find the southern end of Camp Cove Beach. (Retrace your steps back to the main track, then veer right to continue along this walk.)

Camp Cove

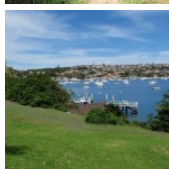
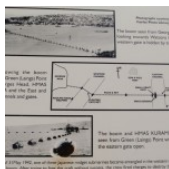
Camp Cove is home to a lovely, yellow sand, north-east facing beach. The cove is on the protected side of South Head and is a popular spot for swimming and relaxing on the beach. At the northern end of the beach is a kiosk, toilet block and an entrance to Sydney Harbour National Park.

The cove was an important location to the Cadigal (Gadigal) people who gathered fresh water, shellfish, launched their canoes and buried some of their people nearby.

This cove is also believed to be the first landing place for Europeans in 1788. The name Camp Cove was given during that landing and appears on the earliest maps of Sydney Harbour.

Green (Laings) Point Park to Green (Laings) Point 0.1km 2 mins

(From 0.03 km) Veer left: From the monument commemorating the landing of Governor Phillip in 1788, in the middle of the park, this walk heads downhill diagonally across the grassy area, keeping the water ahead and to your right. The walk then follows the steps down between the gap in the bushes and across the grass to find a tall sandstone monument and an information sign about the 'World War II Anti-Torpedo Boom' at Green (Laings) Point, beside the water.



Green (Laings) Point

Green (Laings) Point is an open grassland reserve with extensive harbour views. The western tip of the point is still home to many relics, reminding visitors that this area played a significant role in the 1480m anti-submarine net that spanned the harbour entrance, built in 1942. The other end of the net attached to Georges Head. Midway through construction, in May 1942, was when the three Japanese midget submarines entered and attacked vessels in the harbour. From this headland, there are still some preserved parts of the net's construction, including the winch house foundations, the anti-motor torpedo boat defensive battery entrance and another battery. There is also an information sign with more details about the history of the area. [More info](#)

Green (Laings) Point to End of Pacific St 0.1km 3 mins

(From 0.12 km) Continue straight: From the 'World War II Anti-Torpedo Boom' information sign, this walk heads along the grass away from the tall sandstone monument, keeping the water on your right. The walk follows the worn path between the bushes then between the two bunkers, and then across the next grassy clearing towards the house. Near the house, the walk turns left and heads up the hill then steps to find the end of Pacific St.

A list of paper topographical maps that cover this walk

[Sydney Heads](#) 1:25 000 Map Series

Sydney 1:100 000 Map Series

Nearby outdoor and camping stores

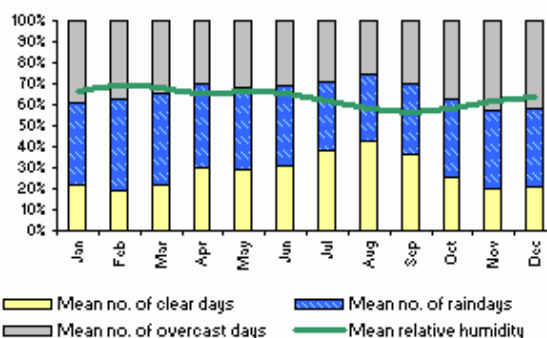
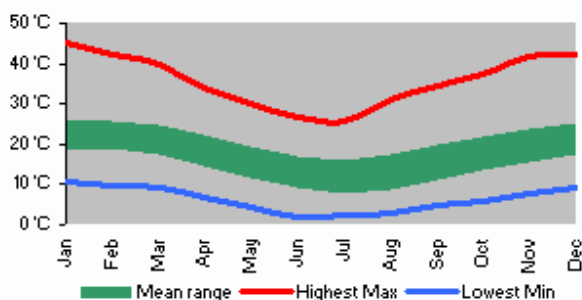
Outdoor Equipment 60 Spring St Bondi Junction (02) 9389 8122

Kellys Camping & Outdoors 826 Pittwater Rd Dee Why (02) 9972 0061

Inski 46 York St Sydney (02) 9233 3200

Mitchells Adventure 81 York St Sydney (02) 9299 6321

Venus Repair Workshop Suite 36a 104 Bathurst St Sydney (02) 9267 0706





Green (Laings) Point Loop

This space is available for advertising



Full colour
Great photos



Give the joy of walking to a friend
(and support wildwalks)

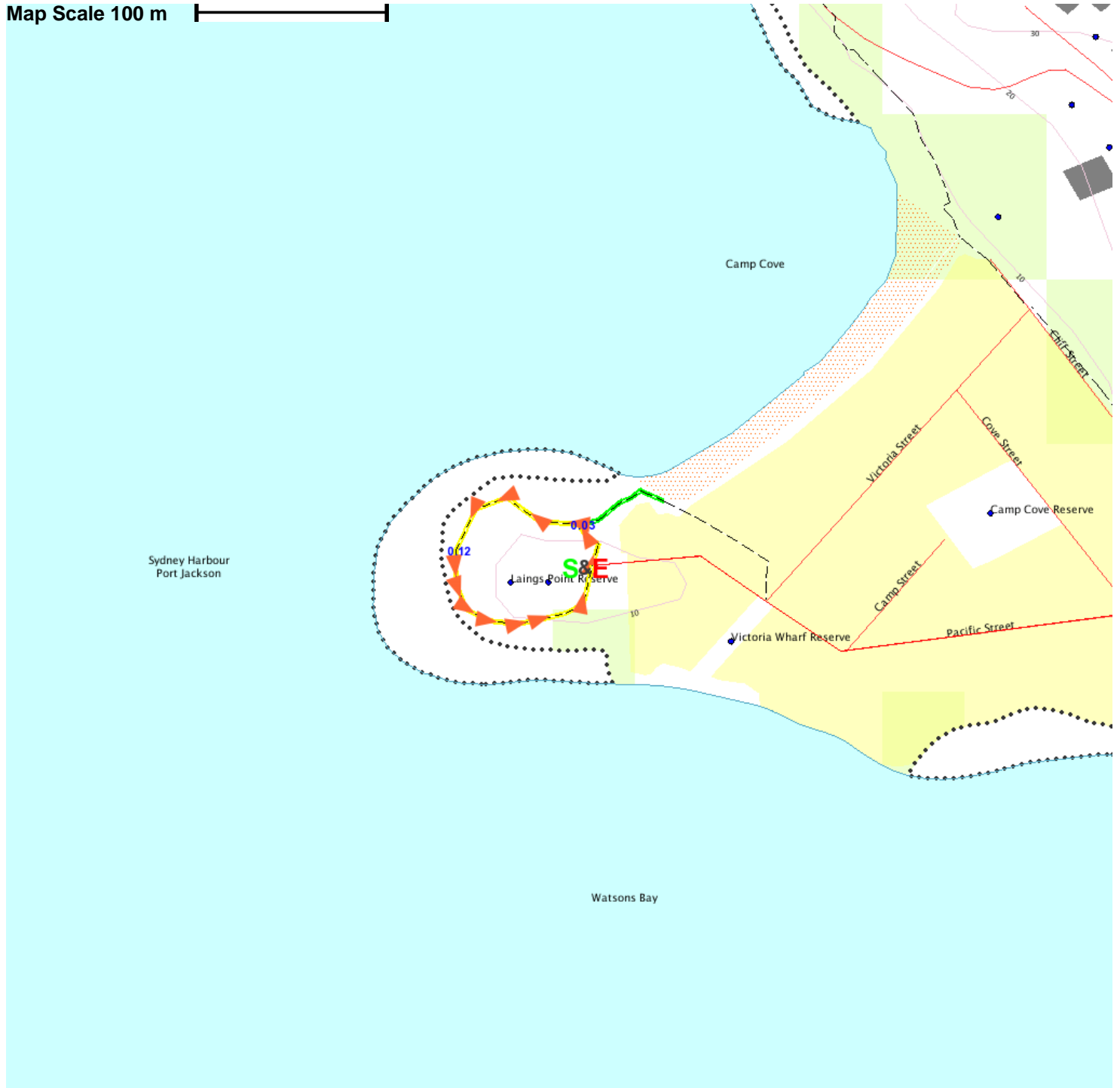
www.wildwalks.com/books.html



A walk for every body



Map Scale 100 m



Base map is used under licence and is (c) Department of lands Panorama Avenue Bathurst 2795 www.lands.nsw.gov.au

