



This walk explores the coastal cliffs near The Gap on Sydney's South Head. The main focal point for this walk is the view from the rocky bluff. The cliff makes for very spectacular scenery and the views extend from North Head along the coast, and even peer across the harbour to the city. This walk starts from Watsons Bay and follows a well used footpath all the way. There is much history in the area and the couple of side trips described in this walk open up some more places to explore.

**Length:** 0.9 km  
**Time:** 30 mins  
**Climb:** 43 m  
**Style:** Return  
**Rating:** Track: Hard  
**Where:** 0.8 km N of Watsons Bay  
**Transport:** ferry bus car



Sydney Harbour National Park

Visit [www.wildwalks.com](http://www.wildwalks.com) for more info



*Side trips and Alternate routes mentioned in these notes are not included in the tracks overall rating, distance or time estimate. The notes only describe the side trips and Alternate routes in one direction. Allow extra time for resting and exploring areas of interest. Please ensure you and your group are well prepared and equipped for all possible hazards and delays. The authors, staff and owners of wildwalks take care in preparing these notes but will not accept responsibility for any inconvenience, loss or injury sustained by using these notes or maps. Please take care and share your experience through the website. Please check park closures, weather information and Fire Danger Rating just before leaving for your walk. Walk maybe closed during Total Fire Ban. GPS for start and end of this walk: -33.8433,151.2818*



## Wildwalks

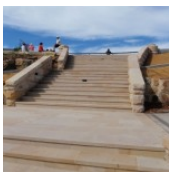


Australia's Latest (and I rocon best) bushwalking Magazine.  
 Download the full magazine for free [Bushwalk Australia eMag](http://Bushwalk Australia eMag)  
 The eMagazine is produces by the community at [bushwalk.com](http://bushwalk.com) and the Wildwalks team  
[Bushwalk.com](http://Bushwalk.com) Australia's most active bushwalking forum - Check it out.  
 Happy Reading. Matt :)



## Watsons Bay

Watsons Bay is a popular spot to enjoy the harbour, Robertson Park and some fish and chips. Doyles offers a formal dining restaurant and the more relaxed fish and chip shop on the ferry wharf. Robertson Park is a large open grassy park with some natural shade, a rotunda, toilets, children's play equipment, garbage bins and picnic tables. [More info](#)



## Watsons Bay Wharf to The bottom of the Gap steps 0.2km 5 mins

(From S) From Watsons Bay Wharf, this walk heads diagonally across the turning circle at the end of Military Rd and into 'Robertson Park'. The walk follows the path diagonally across the open park and tends a little left (straight ahead) at the four-way intersection beside the rotunda. Here the walk goes up the ramp and crosses Military Rd using the crossing, coming to the base of the steps (that lead to The Gap).



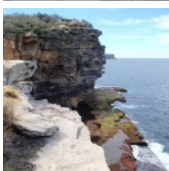
## The bottom of the Gap steps to The Gap 0km

(From 0.23 km) Continue straight: From the bottom of the Gap steps, this walk heads up the steps (or ramp). About halfway up the steps, there is an emergency phone for contacting the police or Lifeline, then at the top there is a fenced section of footpath (lookout) and ocean views from The Gap.



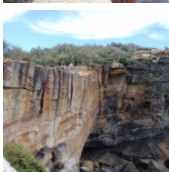
## The Gap

The Gap is one of Sydney's most famous ocean cliff lookouts. The view from the track beside the stretch of cliff is simply stunning. The tall cliffs are enhanced by the rock platform and the pounding ocean far below. Sadly, this site is not only known for the natural wonder, but also for the many deaths that occur here each year. Security cameras and an emergency phone have been installed, to help assist people considering suicide. On the unlikely event that you see someone in distress, please call the police on 000 and lifeline on 131 114, or use the nearby emergency phone. [More info](#)



## The Gap to The Gap Bluff Centre Int 0.1km 3 mins

(From 0.25 km) Turn left: From The Gap, this walk heads up the hill along the path, keeping the fence and water views to your right. The path leads past the 'Sydney Harbour National Park - Gap Bluff' sign and more great views of The Gap. The path comes to a three-way intersection in a small clearing, marked with a few signs including 'The Gap timeline'.



## The Gap Bluff Centre Int to The Gap Bluff Centre (Officers Mess) 0.1km 2 mins **Optional Side Trip:**

(From 0.35 km) Continue straight: From the intersection, this walk heads towards the large white building along the narrow, flat path, away from the ocean views. The path soon leads to a car park, where the walk turns left, around to the front of The Gap Bluff Centre (Officers' Mess) building.  
 (Retrace your steps back to the main track, then turn left to continue along this walk.)



### The Gap Bluff Centre (Officers Mess)

The Gap Bluff Centre, once know as the Officers' Mess, is a large white building just north-east of The Gap on South Head. This building was once part of the South Head School of Artillery. Now part of Sydney Harbour National Park, this building is hired out for functions and conferences. Built in 1936, the curved building has since been extended. The building is surrounded by a car parking area and an exotic garden.



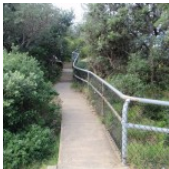
### The Gap Bluff Centre Int to The Gap Bluff Lookout 0.1km 2 mins

(From 0.35 km) Turn right: From the intersection, this walk heads up the path then steps, following the fence and keeping the water views to your right. The path leads past several information signs on local plant life and some lovely wildflowers. The walk continues up the many steps to a rocky clearing near the top. Here the walk tends left and takes the steps through the cleft in the rock to find another rocky clearing and lookout with great panoramic views at the top of Gap Bluff.



### The Gap Bluff Lookout

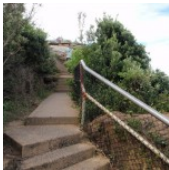
The Gap Bluff Lookout sits high on the rocky hill overlooking the South Pacific Ocean. On the left is a view to North Head and to your right, looking south down the coast, there are great views over The Gap. There are also distant views over the harbour to the city. This site is significant to the traditional owners, the Birrabirragal people, who once occupied the area - although not at this site, there are some rock engraving still remaining. This is a great place to visit and well worth climbing the steps for the view.



### The Gap Bluff Lookout to Gun Emplacement Lookout 0.2km 4 mins **Optional Side Trip:**

(From 0.44 km) Turn left: From the Gap Bluff Lookout, this walk follows the footpath away from the gap and into the heath, keeping the ocean to your right. This path soon leads to a three-way intersection (at an old car park undergoing regeneration) marked with a 'Banksia integrifolia - coast banksia' information sign.

Veer right: From the intersection, this walk heads uphill along the sealed footpath, away from the face of the 'Banksia integrifolia - coast banksia' information sign. Soon the path passes a lookout on your right and comes to a old gun emplacement marked with a 'The gunnery range' sign and a short track to a fenced lookout with another sign.



### Gun Emplacement Lookout

Once home to several gun emplacements, this is now a peaceful, fenced lookout. There are information signs explaining some history, and also some remaining sections of the fortifications to explore.

This is a 'Return' style walk - retrace your steps back to the beginning when you are ready.



### A list of paper topographical maps that cover this walk

[Sydney Heads](#) 1:25 000 Map Series

Sydney 1:100 000 Map Series



### Nearby outdoor and camping stores

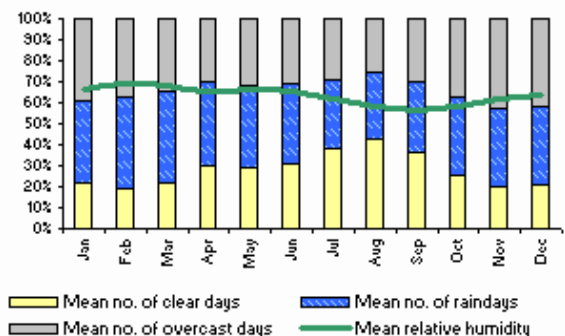
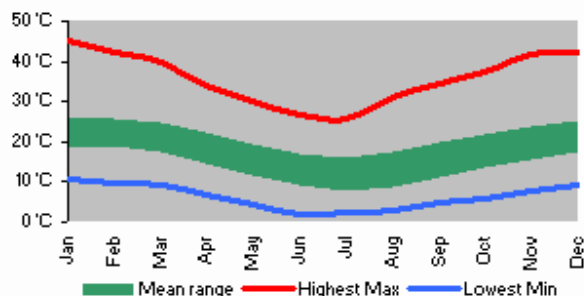
**Outdoor Equipment** 60 Spring St Bondi Junction (02) 9389 8122

**Kellys Camping & Outdoors** 826 Pittwater Rd Dee Why (02) 9972 0061

**Inski** 46 York St Sydney (02) 9233 3200

**Mitchells Adventure** 81 York St Sydney (02) 9299 6321

**Venus Repair Workshop** Suite 36a 104 Bathurst St Sydney (02) 9267 0706



This space is available for advertising



Full colour Great photos



Give the joy of walking to a friend  
(and support wildwalks)

[www.wildwalks.com/books.html](http://www.wildwalks.com/books.html)



A walk for every body



Map Scale 500 m



Base map is used under license and is (c) Department of lands Panorama Avenue Bathurst 2795 [www.lands.nsw.gov.au](http://www.lands.nsw.gov.au)

