



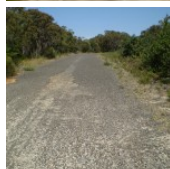
Going from the small town of Bundeena, to one of the largest beaches in the Royal National Park, this walk has great views of the Coast as it heads south through the heath and along the rockshelf. The walk then descends to Marley Beach, which offers the opportunity to swim and explore the lagoon, before heading back to Bundeena. On a sunny day this track is a pure delight.

Royal National Park

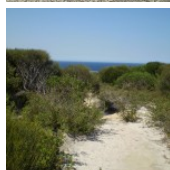
Length: 12.7 km
Time: 4 hrs 30 mins
Climb: 417 m
Style: Return
Rating: Track: Moderate
Where: 0.1 km NE of Bundeena
Transport: car ferry



Visit www.wildwalks.com for more info



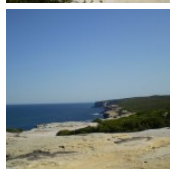
Side trips and Alternate routes mentioned in these notes are not included in the tracks overall rating, distance or time estimate. The notes only describe the side trips and Alternate routes in one direction. Allow extra time for resting and exploring areas of interest. Please ensure you and your group are well prepared and equipped for all possible hazards and delays. The authors, staff and owners of wildwalks take care in preparing these notes but will not accept responsibility for any inconvenience, loss or injury sustained by using these notes or maps. Please take care and share your experience through the website. Please check park closures, weather information and Fire Danger Rating just before leaving for your walk. Walk maybe closed during Total Fire Ban. GPS for start and end of this walk: -34.0827,151.1511



Life Pro - The life insurance professionals Ph:02 9553 1444

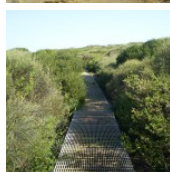
Visit our website www.lifeopro.com.au and compare, you could be paying too much.

Life Insurance - Trauma Insurance - Income Protection



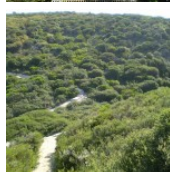
Bundeena

Bundeena is a small township at the northern end of Royal National Park and the southern side of the entrance to Port Hacking. The town can be accessed by car or ferry. There are a few B&B's and other accommodation options and a number of cafes to choose from. Bundeena has a mixed atmosphere, partly a beach holiday community but also home to some permanent residents. There are two main beaches - Hordens Beach to the west and Jibbon Beach to the east. Both are nice beaches inside Port Hacking. [More info](#)



Bundeena Ferry Wharf to End of Beachcomber Av 1.6km 30 mins

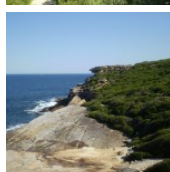
(From S) From Bundeena Ferry, on Brighton St, this walk turns left into Loftus St, goes past Mary St and turns right into Bournemouth St. The walk turns left into Scarborough St and takes the first right into Beachcomber Av. Beachcomber Av is followed south and gradually to the east until reaching the entry into the Royal National Park. This is marked by several large information signs.



End of Beachcomber Av to Int of Beachcomber Rd Service Trail and Coast Walk 0.2km 4 mins

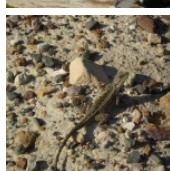
(From 1.55 km) Continue straight: From the end of Beachcomber Av, this walk heads around the locked gate, following the 'Coast Walk' sign along the wide management trail. After about 50m, the trail passes a track (on the left) and continues until coming to an intersection with a wider sandy trail (on the left, which leads to Jibbon Head).

Continue straight: From the intersection, this walk follows the asphalt management trail heading towards the green signposts nearby, where it comes to the signposted intersection of the 'Coast Track'.



Int of Beachcomber Rd Servicetrail and Coast Walk to Bundeena Lookout 0.7km 10 mins

(From 1.76 km) Turn left: From the intersection, the walk follows the 'Coast Track' signpost along the wide, sandy bush track as it winds through the short, thick scrub for a while before arriving at the coast, where there are great views across the South Pacific Ocean.



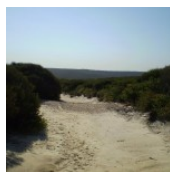
Bundeena Lookout

This unfenced, informal lookout is perched high on the cliffs, looking east over the South Pacific Ocean. The lookout is not signposted nor officially named, but provides great view south along the escarpment. Cliff edge may be unstable and fragile - keep a safe distance.



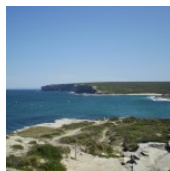
Bundeena Lookout to Int of Coast Track and Marley Head Servicetrail 3km 1 Hrs

(From 2.45 km) Turn right: From the lookout, this walk follows the bush track winding south along the coast line, keeping the ocean to the left as it winds in and out of scrub and across several rock surfaces. On a few occasions, the track will split into two and meet up again a short while later - just stick to the track closer to the coast. This walk follows the track markers until coming to a large gully, where it winds to the bottom via some steep rock steps. Once at the bottom, the track crosses the small stream at the wooden bridge and continues up the other side of the gully, climbing up the wooden steps and the hardened path to the top. From the top of the gully, the track continues along the path heading through the high heath for about 1.5km, until coming to an intersection with a management trail. This intersection is marked by a signpost saying 'Coast Walk'.



Int of Coast Track and Marley Head Servicetrail to East Marely Beach 0.4km 5 mins

(From 5.48 km) Veer left: From the signposted intersection, the walk follows the coast, keeping the ocean to the left. The track winds down the long hill to the end of Marley Beach, and comes to a large green information sign.



East Marely Beach to West Marley Beach 0.4km 5 mins

(From 5.93 km) Continue straight: From the end of Marley Beach, this walk follows the coast along the beach until coming to the rock-shelf at the end. Marley Beach is very beautiful and, on a warm day, it would be a great spot to swim. On the rockshelf at the end of the beach, there are some shady spots to break from the walk. (At this, point there is also an intersection with a small bush track that heads up the hill and away from the beach.)



Big Marley Beach

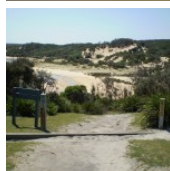
Big Marley Beach, Royal National Park, is a yellow sand, crescent-shaped beach, approximately 400m in length. The beach has a large dune area, behind which Marley Lagoon is found. The lagoon is fed by Marley Creek and the surrounding catchment. The beach is not patrolled and there are no other facilities. The south-facing beach has a rockshelf at either end. For information on this beach's pollution levels, follow the 'more info' link. [More info](#)

This is a 'Return' style walk - retrace your steps back to the beginning when you are ready.

A list of paper topographical maps that cover this walk

[Port Hacking](#) 1:25 000 Map Series

Port Hacking 1:100 000 Map Series



Nearby outdoor and camping stores

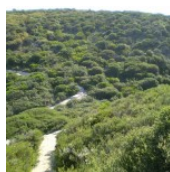
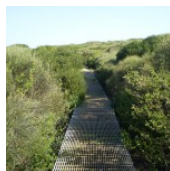
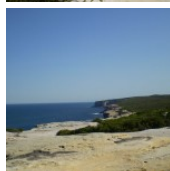
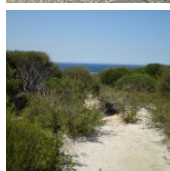
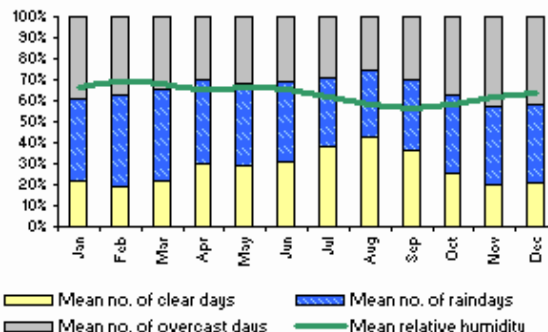
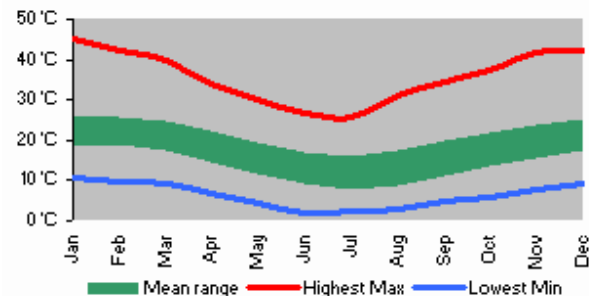
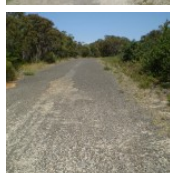
Boots Great Outdoors 23 Koonya Cct Caringbah (02) 9542 8988

Paddy Pallin Adventure Equipment 587 Kingsway Miranda (02) 9525 6829

Caravan Accessories Pty Ltd 33 Rocky Point Rd Kogarah (02) 9588 3400

Carlton Canvas Co 337 Princes Hwy Carlton (02) 9587 0208

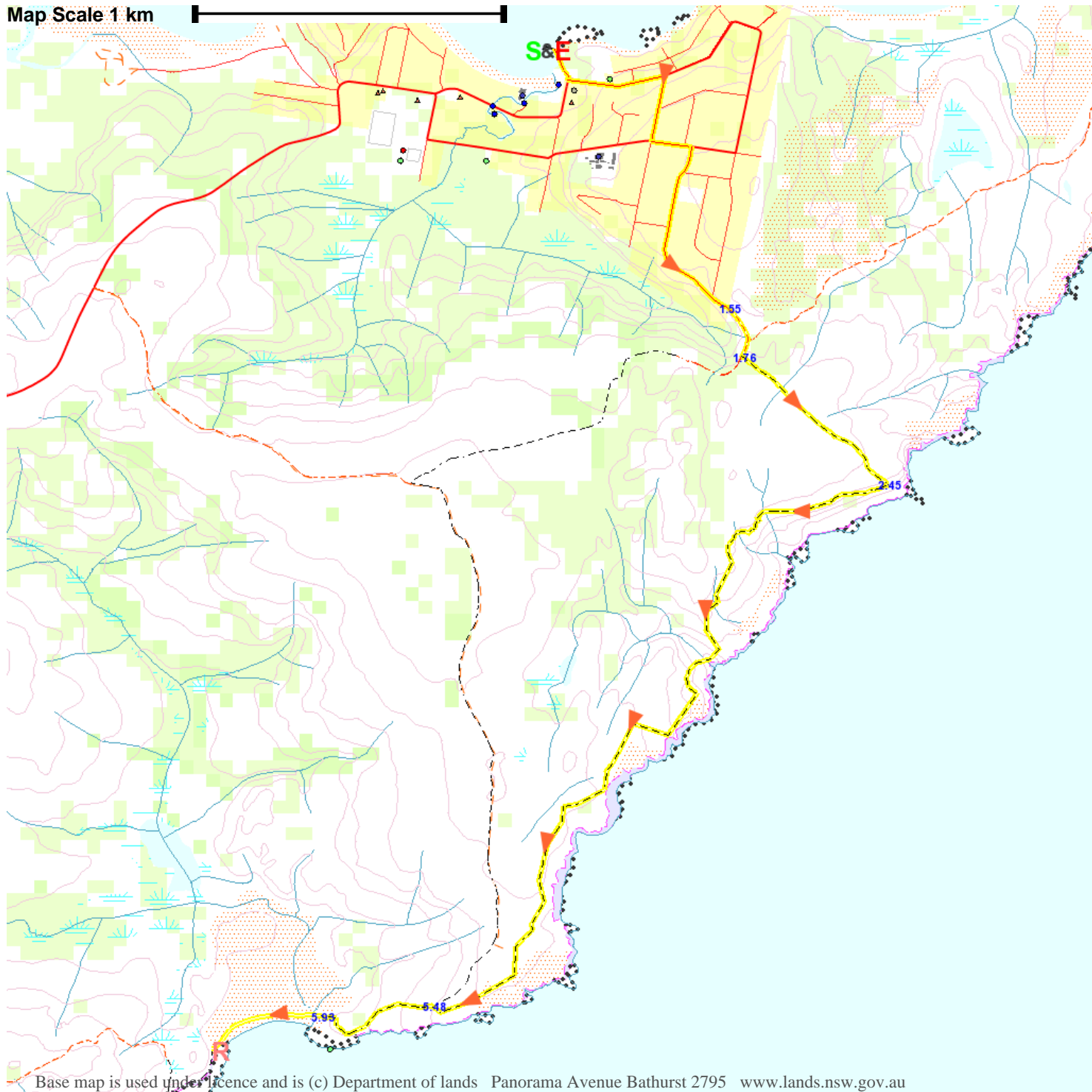
Engadine Disposal & Outdoor Centre Pty Ltd 1042 Old Princes Hwy Engadine (02) 9520 3367





Visit our website www.lifeapro.com.au and compare, you could be paying too much.
 Life Insurance – Trauma Insurance – Income Protection
 Phone – 02 9553 1444

Map Scale 1 km



Base map is used under licence and is (c) Department of lands Panorama Avenue Bathurst 2795 www.lands.nsw.gov.au

