



This walk is the most direct route down to Big and Little Marley. The beaches are fantastic, secluded areas with Big Marley hosting a large sand dune and lagoon. The beaches are not patrolled and can have dangerous surf conditions, so take care. Deer Pool, and it's waterfall, is also a highlight on the walk in.

Royal National Park

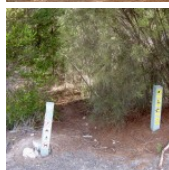
Length: 9.7 km
Time: 3 hrs 30 mins
Climb: 245 m
Style: Return
Rating: Track: Hard
Where: 3.8 km SW of Bundeena
Transport: car



Visit www.wildwalks.com for more info



Side trips and Alternate routes mentioned in these notes are not included in the tracks overall rating, distance or time estimate. The notes only describe the side trips and Alternate routes in one direction. Allow extra time for resting and exploring areas of interest. Please ensure you and your group are well prepared and equipped for all possible hazards and delays. The authors, staff and owners of wildwalks take care in preparing these notes but will not accept responsibility for any inconvenience, loss or injury sustained by using these notes or maps. Please take care and share your experience through the website. Please check park closures, weather information and Fire Danger Rating just before leaving for your walk. Walk maybe closed during Total Fire Ban. GPS for start and end of this walk: -34.103,151.1157



Wildwalks



Download the free [Bushwalk Australia eMag](http://bushwalk.com)

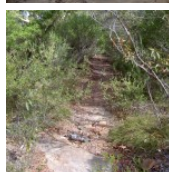
The eMagazine is produced by the community at bushwalk.com and the Wildwalks team
[Bushwalk.com](http://bushwalk.com) Australia's most active bushwalking forum - Check it out.

Happy Reading. Matt :)



Int. Marley Trk and Bundeena Drive to Deer Pools Clearing 1.9km 35 mins

(From S) From the car park on the northern side of Bundeena Drive (1.7km east of Mainbar Rd), this walk crosses the road and heads into the bush between the two posts, following the arrow. Soon the track passes the 'Marley Track' sign and starts to head downhill. The track continues past the old concrete pipe (with white spray-painted arrows). The track passes a couple of rock platforms, but generally the track is narrow as it winds down the hill. Near Deer Pools, there is a clearing on the left as the track tends right, towards the waterfall. The track passes over the top of the waterfall to head up to a clearing on the other side.



Deer Pool

Deer Pool, Royal National Park, is a small and picturesque set of falls that run into a pool with a sandy bank. The waterfall is fed by Marley Creek which continues its journey into Marley Lagoon, behind Big Marley Beach. Royal National Park was once home to many deer, who used to frequent these pools. This is a relaxing spot on a warm day, with the opportunity for a dip or a gentle massage in the cascade. Although a sign suggests camping is permitted by permit, permits are not issued for camping here.



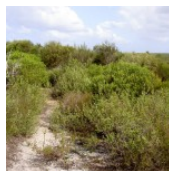
Deer Pools Clearing to Int. Mowlee Ridge Trail and Marley Trk 0.6km 10 mins

(From 1.88 km) Continue straight: From the clearing, this walk leads south-east up the hill through dense scrub. The track follows sprayed white dashes on the rocks, heading up the hill to pass a rocky platform (on the left of the track) approximately 300m up. The track continues past the rocky platform for approximately 100m to the intersection on the ridgeline.



Int. Mowlee Ridge Trail and Marley Trk to North end of Chimney Trk 1km 15 mins

(From 2.44 km) Turn left: From the intersection, this walk follows the service trail, heading down the long gentle hill as it steadily winds down to the coast. There are views across Marley Lagoon on the left as the walk heads down to the end of the service trail, where it comes to a grassy clearing with a bush track on the other side.



North end of Chimney Trk to Int. Coastal Trk and Chimney Trk 0.1km 2 mins

(From 3.47 km) Continue straight: From the intersection, this walk follows the 'Marley' arrow up the short hill and over the rock platform, continuing along the defined bush track, winding down to the coast where it comes to the 'T' intersection with the Coast Walk bush track.



Int. Coastal Trk and Chimney Trk to Little Marley Beach 0.4km 5 mins **Optional Side Trip:**

(From 3.59 km) Veer right: From the intersection, this walk follows the bush track winding along the coast, keeping the ocean and the cliffs to the left. The track winds down the hill for a while before coming to the end of Little Marley Beach. (Retrace your steps back to the main track, then veer right to continue along this walk.)

Little Marley Beach

Little Marley Beach, Royal National Park, is a yellow sand beach, approximately 140m long. The narrow beach faces north-east and has a rock platform at either end. The beach is not patrolled and has no other services. For information on this beach's pollution levels, follow the 'more info' link below. [More info](#)



Int. Coastal Trk and Chimney Trk to West Marley Beach 0.2km 4 mins

(From 3.59 km) Turn left: From the intersection, this walk follows the bush track along the coast, keeping the ocean to the right for a short while before the track descends steeply off the rock-shelf and down a rough bush track to the end of Marley Beach.



West Marley Beach to East Marley Beach 0.4km 5 mins

(From 3.83 km) Veer right: From the end of Marley Beach, this walk follows the coast across the beach until coming to a large green information sign on Aboriginal culture in the area. This is the start of a bush track that heads up the hill to continue along the coast.

Big Marley Beach

Big Marley Beach, Royal National Park, is a yellow sand, crescent-shaped beach, approximately 400m in length. The beach has a large dune area, behind which Marley Lagoon is found. The lagoon is fed by Marley Creek and the surrounding catchment. The beach is not patrolled and there are no other facilities. The south-facing beach has a rockshelf at either end. For information on this beach's pollution levels, follow the 'more info' link. [More info](#)

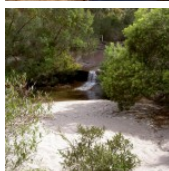


East Marley Beach to Marley Lagoon Lookout 0.6km 10 mins

(From 4.23 km) Turn left : From the intersection, this walk follows the edge of the sand dunes, keeping the thick scrub up the hill to the right. The walk follows a shallow stream to the back of the sand dunes, then climbs up a short hill to the Marley Lagoon lookout.

Marley Lagoon Lookout

This unofficial lookout is on top of the sand dune behind Big Marley Beach in the Royal National Park. The lookout can be accessed by walking inland across the sand from the beach. The view from the sand dune provides a high-set view of the lagoon and also north-west across the bush. The lagoon is not suitable for swimming.



Marley Lagoon Lookout to West Marley Beach 0.5km 5 mins **Alternative ROUTE:**

(From 4.85 km) Veer left: From the view point, the walk follows the edge of the sand dunes, keeping the thick scrub up the hill to the right. The walk winds around to the coast, coming to an intersection with the coastal walk track at the end of the beach.

Turn left to rejoin the main walk, following the notes from 3.83km 'West Marley Beach'.

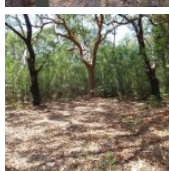
This is a 'Return' style walk - retrace your steps back to the beginning when you are ready.



A list of paper topographical maps that cover this walk

[Port Hacking](#) 1:25 000 Map Series

Port Hacking 1:100 000 Map Series



Nearby outdoor and camping stores

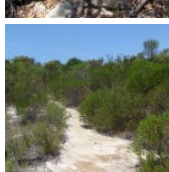
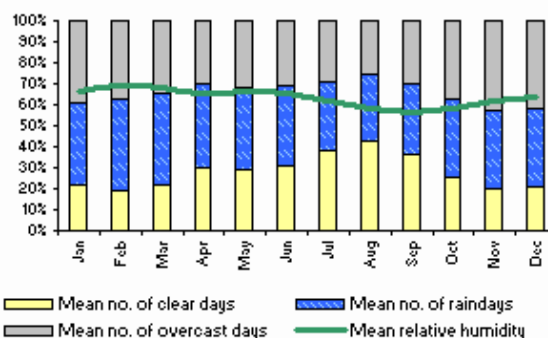
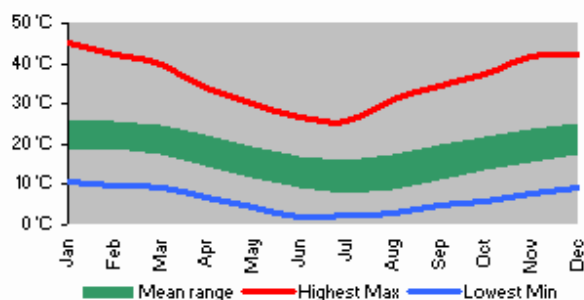
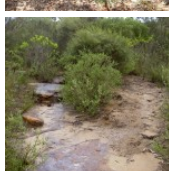
Boots Great Outdoors 23 Koonya Cct Caringbah (02) 9542 8988

Paddy Pallin Adventure Equipment 587 Kingsway Miranda (02) 9525 6829

Carlton Canvas Co 337 Princes Hwy Carlton (02) 9587 0208

Engadine Disposal & Outdoor Centre Pty Ltd 1042 Old Princes Hwy Engadine (02) 9520 3367

Hurstville Disposals & Outdoor Centre 235 Forest Rd Hurstville (02) 9580 4445



This space is available for advertising



Full colour
Great photos



Give the joy of walking to a friend
(and support wildwalks)

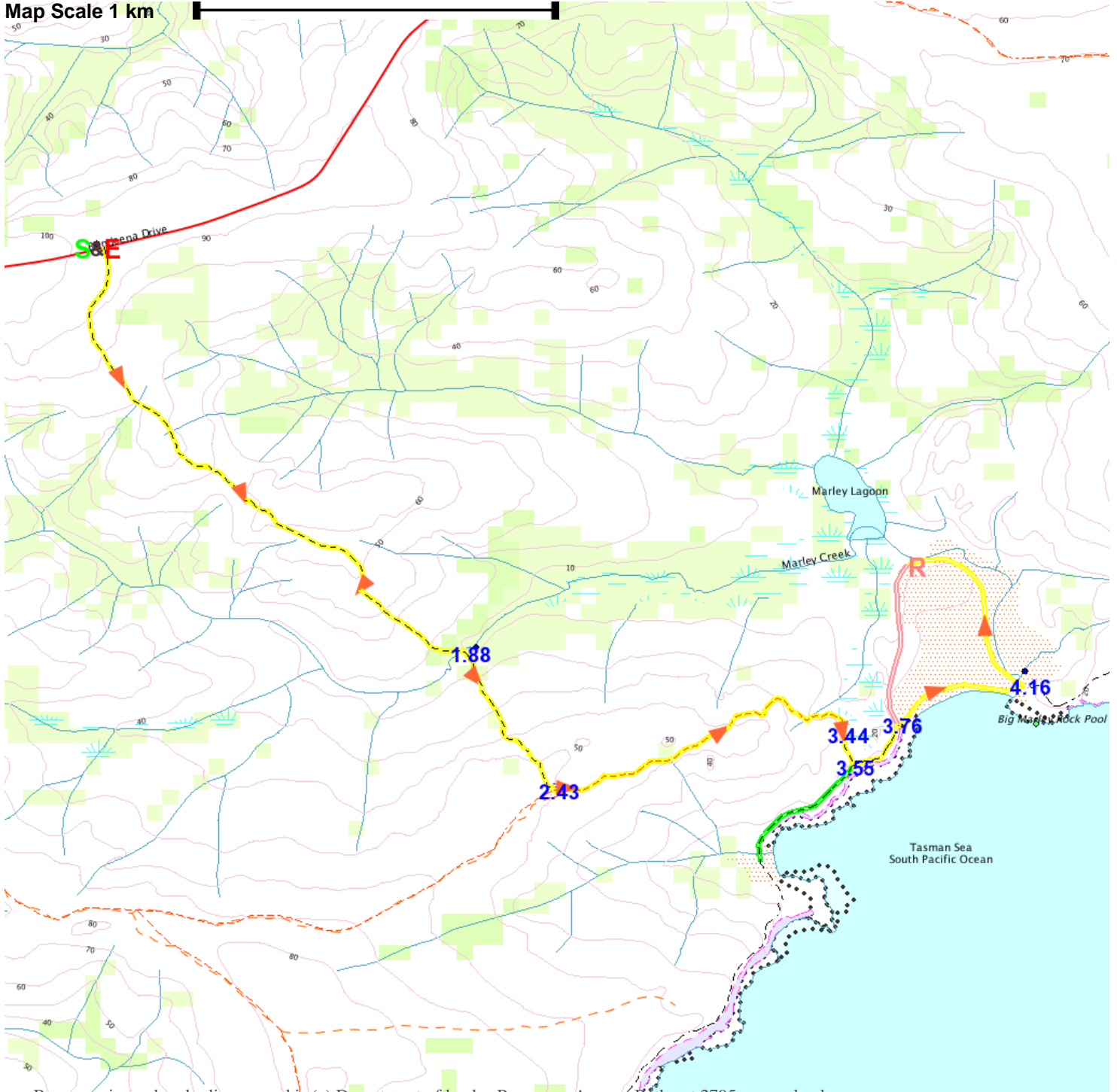
www.wildwalks.com/books.html



A walk for every body



Map Scale 1 km



Base map is used under licence and is (c) Department of lands Panorama Avenue Bathurst 2795 www.lands.nsw.gov.au

