



The Bournda Lagoon track is a wonderful walk around the Lagoon, exploring the surrounding area. Bournda Lagoon and Sandy Beach Creek support some lush vegetation, including a rain forest, on their shores. The walk is well signposted with the option to miss the North Tura section of the walk and head back to the car park. Don't forget to take your swimmers for a dip at Bournda Lagoon on your way back.

Bournda National Park

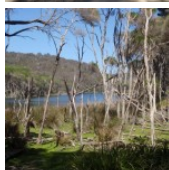
**Length:** 5.2 km  
**Time:** 2 hrs  
**Climb:** 106 m  
**Style:** Circuit  
**Rating:** Track: Hard  
**Where:** 9.5 km SSW of Tathra  
**Transport:** car



Visit [www.wildwalks.com](http://www.wildwalks.com) for more info



*Side trips and Alternate routes mentioned in these notes are not included in the tracks overall rating, distance or time estimate. The notes only describe the side trips and Alternate routes in one direction. Allow extra time for resting and exploring areas of interest. Please ensure you and your group are well prepared and equipped for all possible hazards and delays. The authors, staff and owners of wildwalks take care in preparing these notes but will not accept responsibility for any inconvenience, loss or injury sustained by using these notes or maps. Please take care and share your experience through the website. Please check park closures, weather information and Fire Danger Rating just before leaving for your walk. Walk maybe closed during Total Fire Ban. GPS for start and end of this walk: -36.8156,149.9375*



## Wildwalks

Download the free [Bushwalk Australia eMag](http://Bushwalk Australia eMag)

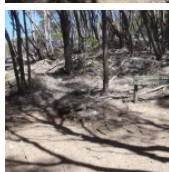
The eMagazine is produced by the community at [bushwalk.com](http://bushwalk.com) and the Wildwalks team  
[Bushwalk.com](http://Bushwalk.com) Australia's most active bushwalking forum - Check it out.

Happy Reading. Matt :)



## Bournda Beach picnic area

Bournda Beach picnic area is found next to Bournda Lagoon car park, in Bournda National Park. The picnic area is shaded by the trees behind Bournda Beach, which is between Tathra and Merimbula. The picnic area has modest facilities with a few picnic tables, BBQ pit and a toilet nearby. The picnic area is a great place to eat lunch before heading down to Bournda Beach or Lagoon, which are only a stroll away through the bush.

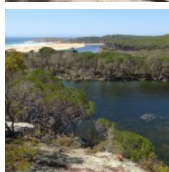


## Bournda Lagoon Carpark to Bournda Lagoon Lookout 0.2km 5 mins

(From S) From the intersection, this walk heads along the car park (on the right) to the signposted intersection at the other corner of the car park. The walk then follows the sign 'Bournda Walking Track' down the hill. The track winds for a short time to come to a 'Walking Track' signposted intersection before the lagoon.

**Veer right:** From the intersection, this walk follows the arrow on the sign 'Walking Track' keeping the lagoon on the left. The track soon meets a signposted hill, which it heads up, coming to an signposted intersection on the left.

**Continue straight:** From the intersection, this walk follows the sign to the lookout. The track winds through the trees, up onto a rocky platform overlooking the lagoon and beach.



## Bournda Lagoon Lookout to Int. North Tura Carpark and Bournda Lagoon Trk 2.3km 40 mins

(From 0.24 km) Turn around: From the lookout, this walk heads away from the unfenced rock edge and into the trees. The track keeps the lagoon below on the right as it winds through the trees to a signposted intersection.

**Turn left:** From the intersection, this walk follows the sign 'Walking Track', winding up the hill, then turning left and soon coming to a 'Walking Track' signposted intersection.

**Continue straight:** From the intersection, this walk follows the 'Walking Track' arrow down the steps. The steps lead the walk beneath a line of cliffs, then the track turns left, down the hill, entering an area of rainforest vegetation (which is signposted). The track then continues down closer to the water where it turns right, and keeps the lagoon on the left for some time. The track then passes a whole lot of seats with a signpost marked 'Study Area 1'. The track continues past this to more closely follow the waterline, on the left, coming to 'Study Area 2'. The walk passes over a log then follows the track markers along the creek bank. The track then turns left, up the hill, and follows a rocky path over the hill and down to a dry creek crossing. The track crosses to the other side, where there is a signpost.

**Veer right:** From the intersection, this walk follows the arrow up the rocky hill. The track winds along the hillside, with Sandy Beach Creek below on the right. The track soon descends from the hill, meandering through the bush, tending left (away from the creek) to a well-signposted intersection.



## Int North Tura Carpark and Bournda Lagoon Trk to Int Bournda Lagoon and Tura Beach Trks 0.7km 10 mins

### Alternative ROUTE:

(From 2.58 km) Turn left : From the intersection, the walk follows the 'Bournda Lagoon via Bournda Headland' sign, tending left down the hill. The walk heads straight past a 'Kunzea' sign to the right, before passing over numerous speed bump like mounds on a white dirt path. The track continues straight up this hill to wind past a 'Melaleuca' sign to the left of the track. From here, the track meanders down the hill to a signposted intersection.

**Veer left** to rejoin the main walk, following the notes from 4.16km 'Int. Bournda Lagoon and Tura Beach Trks'.



# wild walks Bournda Lagoon via North Tura Lookout



## **Int. North Tura Carpark and Bournda Lagoon Trk to Nth Tura Lookout** 0.8km 10 mins

(From 2.58 km) Turn right: From the intersection, this walk follows the sign 'Nth Tura Carpark' down the hill. The sandy track meanders through the heath to a signposted intersection.

Turn left: From the intersection, this walk follows the sign to 'Nth Tura Carpark', heading down the track through the thick heath. The track winds a little as it passes into areas of open and closed heath, and also passes a 'Walking Track' sign. The walk continues for a short time to meet a signposted intersection with picnic tables at the car park.

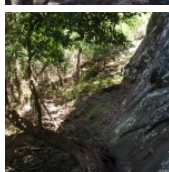
Turn right: From the intersection, the walk heads away from the sign and the picnic tables, which are on the right, keeping the car park on your right. The walk comes to the middle of the car park where a fenced-track leads out onto a verandah.

Turn left: From the intersection, the walk follows the sign for 'Viewing Platform' out to the verandah lookout.



## **North Tura Lookout**

North Tura Beach Lookout is located between Tathra and Merimbula in Bournda National Park. The lookout has stunning views over North Tura Beach, all the way south to Tura Headland and out to sea. The lookout is also a great viewing point for Turingal Head and Bournda Island. The lookout is easily accessed from North Tura car park and is wheelchair-accessible.



## **North Tura Beach**

North Tura Beach is located north of Merimbula and Tura Heads. The beach is a beautiful expanse of sand of nearly 2.5km, stretching from Tura Heads to Bournda Island in the north. North Tura is an easterly-facing beach which is accessed by Widgeram Rd off the Sapphire Coast Drive.



## **Nth Tura Lookout to Int. Bournda Lagoon and Steps onto Beach Trks** 0.1km 1 mins

(From 3.39 km) Turn around: From the lookout, the walk heads away from the beach views to the dirt car park, at the end of the verandah.

Turn right: From the intersection, the walk follows the walking tracks sign along the fence line, with the car park on your left. The walk continues to the picnic table and signpost.

Veer right: From the intersection, this walk follows the sign 'Steps to Beach 80m' down the hill. The walk winds down through the melaleuca trees to an unsignposted intersection with a set of stairs.



## **Int. Bournda Lagoon and Steps onto Beach Trks to Nth Tura Beach** 0.1km 1 mins **Optional Side Trip:**

(From 3.48 km) Turn right: From the intersection, this walk follows the stairs down the hill and through the heath and then onto the beach.

(Retrace your steps back to the main track, then turn right to continue along this walk.)



## **Int Bournda Lagoon and Steps onto Beach Trks to Int. Bournda Lagoon and Island Trks** 1km 15 mins

(From 3.48 km) Continue straight: From the intersection with the stairs, the walk heads behind the dunes, keeping the ocean to the right. The track winds through the trees behind the dunes and has some views of the ocean. The track soon comes to a signposted intersection.

Veer right: From the intersection, this walk follows the sign to 'Bournda Lagoon via Bournda Headland', keeping the ocean on the right of the track. The track winds behind the dunes to soon come to a signposted intersection.



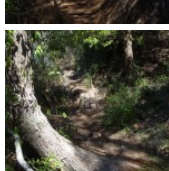
## **Int. Bournda Lagoon and Island Trks to Bournda Island** 0.3km 5 mins **Optional Side Trip:**

(From 4.44 km) Turn right: From the intersection, the walk follows the sign to 'Bournda Island' over the dune and down some stairs onto the beach.

Veer left: From the bottom of the steps, this walk heads away from the stairs and across the beach towards Bournda Island. The walk continues along the sand to a small cave feature at the base of the island.

Veer right: From the intersection, the walk keeps the cave feature on the right and climbs up the ridge of rock. The track winds along the left-hand side of the island, with the ocean below on the left. The walk heads up onto the hill with views of both North Tura and Bournda Beaches.

(Retrace your steps back to the main track, then turn right to continue along this walk.)



## **Bournda Island**

Bournda Island separates Bournda and North Tura beaches, and is located between Tathra and Merimbula. The island is joined to the mainland by a tombola beach, which can be submerged by the tide to form a real island. Bournda Island is covered in low dune shrub vegetation species that are perched on top of the rocky island. Access to the island is at low tide from Bournda or North Tura beaches. Bournda Island can also be accessed from the Bournda Lagoon via Headland Track.



# wild walks Bournda Lagoon via North Tura Lookout



## Int. Bournda Lagoon and Island Trks to Bournda Bch Sth 0.2km 3 mins

(From 4.44 km) Continue straight: From the intersection, this walk follows the sign to 'Bournda Lagoon', following the white fencing. The walk keeps the ocean on the right as it winds down to a grassy lookout on the right of the track (with fantastic views of Bournda Island). The walk then heads down some stairs to a signposted intersection on the beach.



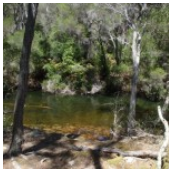
## Bournda Bch Sth to Bournda Lagoon 0.5km 5 mins

(From 4.61 km) Continue straight: From the intersection, this walk heads along the beach, with the ocean on the right, and the lagoon behind the dunes, to the left. The walk continues up the beach, tending left over the dunes to the shore next to the lagoon, and stairs leading up the hill.



## Bournda Lagoon

Bournda Lagoon has formed behind Bournda Beach, between Tathra and Merimbula in Bournda National Park. The lagoon is deep enough for swimming and is a popular spot for a freshwater swim. The lagoon is fed by Sandy Beach Creek, which has been silted up at the southernmost end of Bournda Beach. The lagoon supports a variety of environments, including a rainforest, on its shores. However, the lagoon is subject to environmental issues such as algal blooms. The lagoon can be accessed by bush track from Bournda Lagoon car park, at the end of Bournda Rd. [More info](#)



## Bournda Lagoon to Bournda Lagoon Car Park 0.1km 2 mins

(From 5.07 km) Continue straight: From the lagoon, the walk heads away from the lagoon up the wooden stairs on the bushy hill. The track continues past a toilet block (on your right) and then a gate into the car park.



## Bournda Beach picnic area

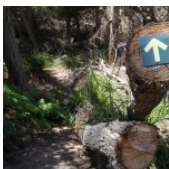
Bournda Beach picnic area is found next to Bournda Lagoon car park, in Bournda National Park. The picnic area is shaded by the trees behind Bournda Beach, which is between Tathra and Merimbula. The picnic area has modest facilities with a few picnic tables, BBQ pit and a toilet nearby. The picnic area is a great place to eat lunch before heading down to Bournda Beach or Lagoon, which are only a stroll away through the bush.



## A list of paper topographical maps that cover this walk

[Wolumla](#) 1:25 000 Map Series

Bega 1:100 000 Map Series



## Nearby outdoor and camping stores

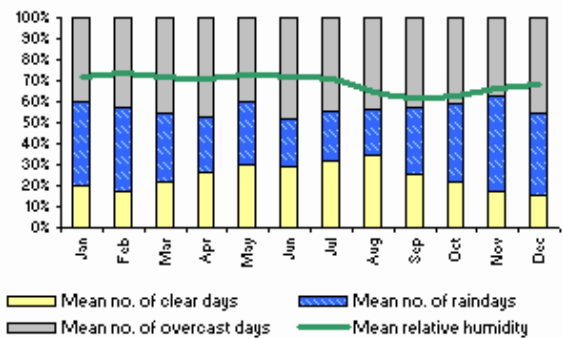
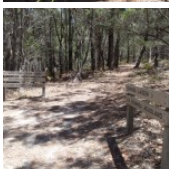
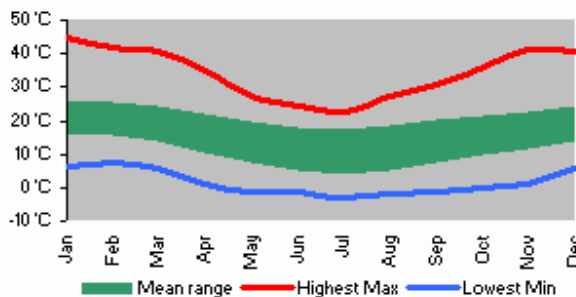
**Camping Plus** 6 Alice St Merimbula (02) 6495 2571

**Gas Connection The** Arthur Kaine Drv Pambula (02) 6495 7121

**Barbeques Galore (Bega)** 274 Carp St Bega (02) 6492 4054

**Camping Outdoors Centre** 43 Vulcan St Moruya (02) 4474 3081

**Gone Fishin** Cnr Ford & Queen Sts Moruya (02) 4474 4381



# wild walks Bournda Lagoon via North Tura Lookout

This space is available for advertising



Full colour  
Great photos



Give the joy of walking to a friend  
(and support wildwalks)

[www.wildwalks.com/books.html](http://www.wildwalks.com/books.html)



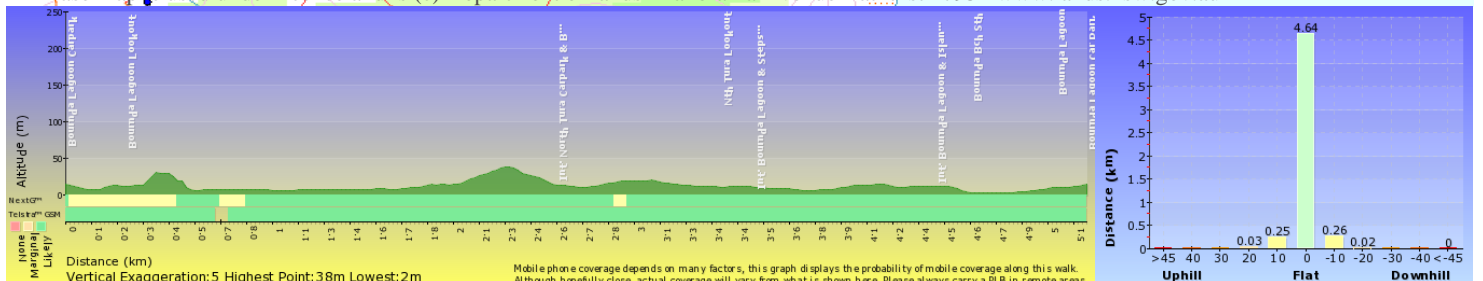
A walk for every body



Map Scale 1 km



Base map is used under licence and is (c) Department of lands Panorama Avenue Bathurst 2795 [www.lands.nsw.gov.au](http://www.lands.nsw.gov.au)



Mobile phone coverage depends on many factors, this graph displays the probability of mobile coverage along this walk. Although hopefully close, actual coverage will vary from what is shown here. Please always carry a PLB in remote areas.