



The walk from Bournda Lagoon to North Tura passes a lagoon, two beaches, a tombola headland, dunes, heath land and stunning views of the coast. With all the different scenery there is plenty to do along this walk, so leave some extra time to thoroughly enjoy all that is on offer.

Bournda National Park

Length: 1.8 km
Time: 45 mins
Climb: 22 m
Style: One way
Rating: Track: Moderate
Where: 8.6 km NNE of Merimbula
Transport: car



Visit www.wildwalks.com for more info



Side trips and Alternate routes mentioned in these notes are not included in the tracks overall rating, distance or time estimate. The notes only describe the side trips and Alternate routes in one direction. Allow extra time for resting and exploring areas of interest. Please ensure you and your group are well prepared and equipped for all possible hazards and delays. The authors, staff and owners of wildwalks take care in preparing these notes but will not accept responsibility for any inconvenience, loss or injury sustained by using these notes or maps. Please take care and share your experience through the website. Please check park closures, weather information and Fire Danger Rating just before leaving for your walk. Walk maybe closed during Total Fire Ban. GPS for start the start of this walk:-36.8156,149.9375 & for the end:-36.8291,149.9346



Wildwalks

Download the free Bushwalk Australia eMag

The eMagazine is produced by the community at bushwalk.com and the Wildwalks team
Bushwalk.com Australia's most active bushwalking forum - Check it out.

Happy Reading. Matt :)



Bournda Lagoon Car Park to Bournda Lagoon 0.1km 2 mins

(From S) From the car park, the walk heads past the gate following the sign to 'Bournda Lagoon' past the toilet. The walk heads down the hill, becoming more sandy as it comes to meet the lagoon shore.

Bournda Lagoon

Bournda Lagoon has formed behind Bournda Beach, between Tathra and Merimbula in Bournda National Park. The lagoon is deep enough for swimming and is a popular spot for a freshwater swim. The lagoon is fed by Sandy Beach Creek, which has been silted up at the southernmost end of Bournda Beach. The lagoon supports a variety of environments, including a rainforest, on its shores. However, the lagoon is subject to environmental issues such as algal blooms. The lagoon can be accessed by bush track from Bournda Lagoon car park, at the end of Bournda Rd. [More info](#)



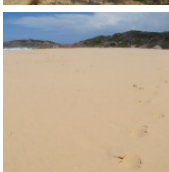
Bournda Lagoon to Bournda Bch Sth 0.5km 5 mins

(From 0.14 km) Continue straight: From the lagoon, this walk heads over the dunes towards the ocean, keeping the lagoon behind on the right. The walk turns right on the beach, keeping the ocean to the left, and follows the beach to the end where there is a signposted intersection.

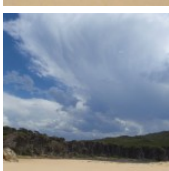


Bournda Bch Sth to Int Bournda Lagoon and Steps onto Beach Trks 1.1km 15 mins

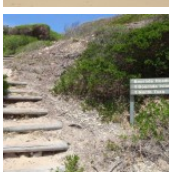
(From 0.6 km) Continue straight: From the intersection, this walk follows the sign to 'Bournda Island' and 'North Tura Beach' up the hill, passing a grassy platform on the left (which has great views over Bournda Island). The walk leads along the top of the dunes, along the fenced track to an intersection with a sign pointing back to 'Bournda Island' and 'Bournda Lagoon'.



Continue straight: From the intersection, this walk follows none of the signed directions, instead it keeps the ocean on the left of the track and continues behind the dunes. The walk winds along the sandy track for a short time, heading down into the melaleuca trees to a signposted intersection.



Veer left: From the intersection, the walk follows the 'Nth Tura Carpark' sign, keeping the ocean to the left. The track winds up through melaleuca trees, away from the ocean views to come to an un-signposted intersection with a set of stairs on the left of the track.



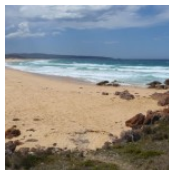
Int. Bournda Lagoon and Steps onto Beach Trks to Nth Tura Beach 0.1km 1 mins **Optional Side Trip:**

(From 1.73 km) Turn left: From the intersection, this walk follows the stairs down the hill and through the heath and then onto the beach.

(Retrace your steps back to the main track, then turn left to continue along this walk.)

North Tura Beach

North Tura Beach is located north of Merimbula and Tura Heads. The beach is a beautiful expanse of sand of nearly 2.5km, stretching from Tura Heads to Bournda Island in the north. North Tura is an easterly-facing beach which is accessed by Widgeram Rd off the Sapphire Coast Drive.



Int. Bournda Lagoon and Steps onto Beach Trks to Int. Nth Tura Car Park and Lookout Trk 0.1km 1 mins
 (From 1.73 km) Continue straight: From the intersection, this walk leaves the beach and stairs behind on the left, as the track winds up the hill for a short time to the car park.

Veer left: From the intersection, the walk heads away from the sign and the picnic tables, which are on the right, keeping the car park on your right. The walk comes to the middle of the car park where a fenced-track leads out onto a verandah.

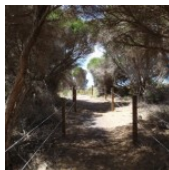


Int. Nth Tura Car Park and Lookout Trk to Nth Tura Lookout 0km **Optional Side Trip:**

(From 1.8 km) Turn left: From the intersection, the walk follows the sign for 'Viewing Platform' out to the verandah lookout.

North Tura Lookout

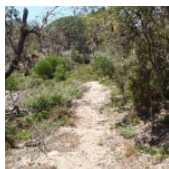
North Tura Beach Lookout is located between Tathra and Merimbula in Bournda National Park. The lookout has stunning views over North Tura Beach, all the way south to Tura Headland and out to sea. The lookout is also a great viewing point for Turingal Head and Bournda Island. The lookout is easily accessed from North Tura car park and is wheelchair-accessible.



A list of paper topographical maps that cover this walk

[Wolumla](#) 1:25 000 Map Series

Bega 1:100 000 Map Series



Nearby outdoor and camping stores

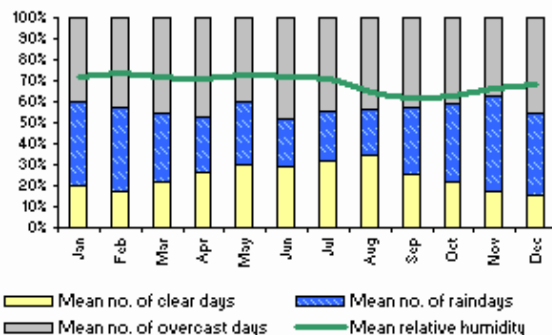
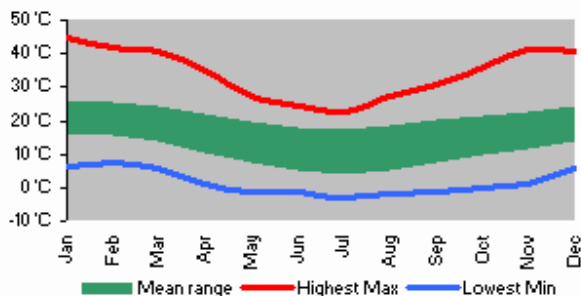
Camping Plus 6 Alice St Merimbula (02) 6495 2571

Gas Connection The Arthur Kaine Drv Pambula (02) 6495 7121

Barbeques Galore (Bega) 274 Carp St Bega (02) 6492 4054

Camping Outdoors Centre 43 Vulcan St Moruya (02) 4474 3081

Gone Fishin Cnr Ford & Queen Sts Moruya (02) 4474 4381





Bournda Lagoon to North Tura

This space is available for advertising



Full colour
Great photos



Give the joy of walking to a friend
(and support wildwalks)

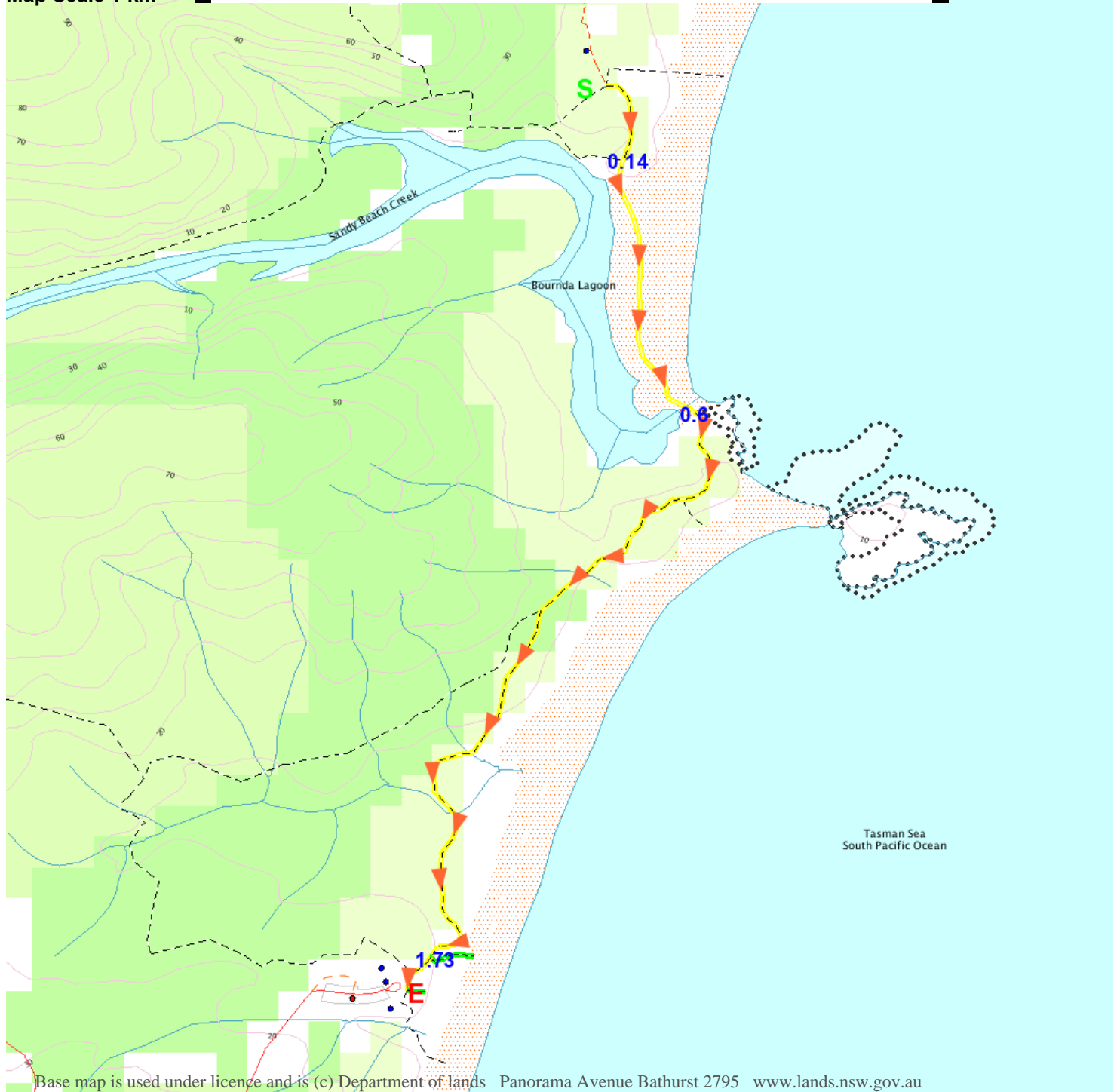
www.wildwalks.com/books.html



A walk for every body



Map Scale 1 km



Base map is used under licence and is (c) Department of lands Panorama Avenue Bathurst 2795 www.lands.nsw.gov.au

