



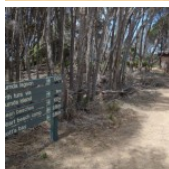
This walk passes Bournda Lagoon and crosses Bournda Beach to follow the headland to the island. Bournda Island divides North Tura and Bournda beaches. The island is exposed to the elements and provides stunning views along both beaches. The cave at the bottom of the island is interesting to explore when the surf conditions are safe.

Bournda National Park

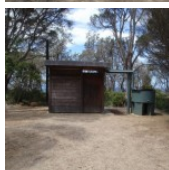
Length: 2.1 km
Time: 45 mins
Climb: 35 m
Style: Return
Rating: Track: Hard
Where: 9.5 km SSW of Tathra
Transport: car



Visit www.wildwalks.com for more info



Side trips and Alternate routes mentioned in these notes are not included in the tracks overall rating, distance or time estimate. The notes only describe the side trips and Alternate routes in one direction. Allow extra time for resting and exploring areas of interest. Please ensure you and your group are well prepared and equipped for all possible hazards and delays. The authors, staff and owners of wildwalks take care in preparing these notes but will not accept responsibility for any inconvenience, loss or injury sustained by using these notes or maps. Please take care and share your experience through the website. Please check park closures, weather information and Fire Danger Rating just before leaving for your walk. Walk maybe closed during Total Fire Ban. GPS for start and end of this walk: -36.8156,149.9375

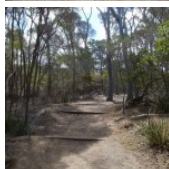


Wildwalks

Download the free [Bushwalk Australia eMag](http://bushwalk.com)

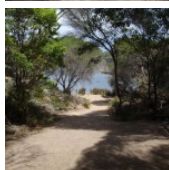
The eMagazine is produced by the community at bushwalk.com and the Wildwalks team
[Bushwalk.com](http://bushwalk.com) Australia's most active bushwalking forum - Check it out.

Happy Reading. Matt :)



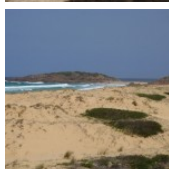
Bournda Lagoon Car Park to Bournda Lagoon 0.1km 2 mins

(From S) From the car park, the walk heads past the gate following the sign to 'Bournda Lagoon' past the toilet. The walk heads down the hill, becoming more sandy as it comes to meet the lagoon shore.



Bournda Lagoon to Bournda Bch Sth 0.5km 5 mins

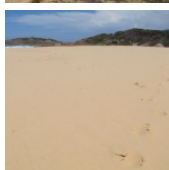
(From 0.14 km) Continue straight: From the lagoon, this walk heads over the dunes towards the ocean, keeping the lagoon behind on the right. The walk turns right on the beach, keeping the ocean to the left, and follows the beach to the end where there is a signposted intersection.



Bournda Island Trk to Bournda Bch Sth 0.3km 5 mins **Alternative ROUTE:**

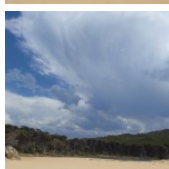
(From 0.6 km) Turn left: From the base of the island, the walk heads along the sand peninsula to the main headland. The walk then bends right, keeping the ocean to the right and the headland to the left. The walk crosses the rocky headland at the end of this beach then bends to the left, to a signposted intersection at the start of the next beach. (This route is only possible with low water tides).

Veer left to rejoin the main walk, following the notes from 0.99km 'Bournda Island Trk'.



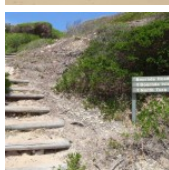
Bournda Bch Sth to Int. Bournda Lagoon and Island Trks 0.2km 3 mins

(From 0.6 km) Continue straight: From the intersection, this walk follows the sign to 'Bournda Island' and 'North Tura Beach' up the hill, passing a grassy platform on the left (which has great views over Bournda Island). The walk leads along the top of the dunes, along the fenced track to an intersection with a sign pointing back to 'Bournda Island' and 'Bournda Lagoon'.



Int. Bournda Lagoon and Island Trks to Nth Tura Beach and Bournda Island Trk 0.1km 1 mins

(From 0.77 km) Turn left: From the intersection, the walk follows the sign to 'Bournda Island' over the dune and down some stairs onto the beach.

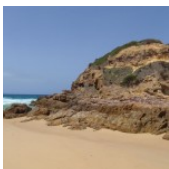
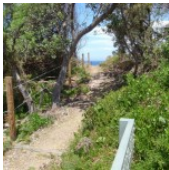
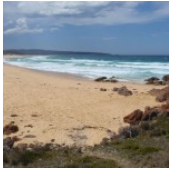


Nth Tura Beach and Bournda Island Trk to Bournda Island Trk 0.2km 3 mins

(From 0.83 km) Veer left: From the bottom of the steps, this walk heads away from the stairs and across the beach towards Bournda Island. The walk continues along the sand to a small cave feature at the base of the island.

Bournda Island Trk to Bournda Island 0.1km 1 mins

(From 0.99 km) Veer right: From the intersection, the walk keeps the cave feature on the right and climbs up the ridge of rock. The track winds along the left-hand side of the island, with the ocean below on the left. The walk heads up onto the hill with views of both North Tura and Bournda Beaches.



Bournda Island

Bournda Island separates Bournda and North Tura beaches, and is located between Tathra and Merimbula. The island is joined to the mainland by a tombola beach, which can be submerged by the tide to form a real island. Bournda Island is covered in low dune shrub vegetation species that are perched on top of the rocky island. Access to the island is at low tide from Bournda or North Tura beaches. Bournda Island can also be accessed from the Bournda Lagoon via Headland Track.

This is a 'Return' style walk - retrace your steps back to the beginning when you are ready.

A list of paper topographical maps that cover this walk

[Wolumla](#) 1:25 000 Map Series

Bega 1:100 000 Map Series

Nearby outdoor and camping stores

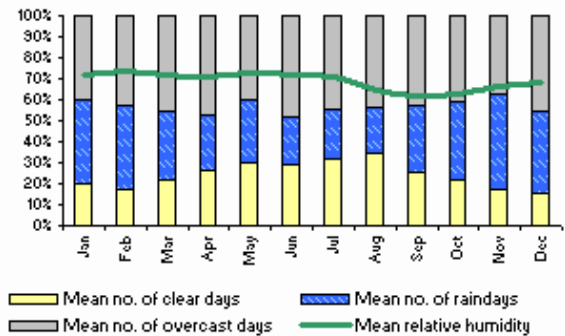
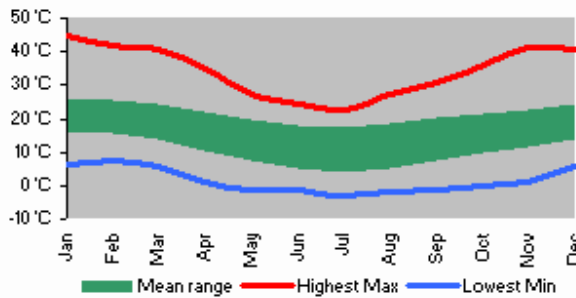
Camping Plus 6 Alice St Merimbula (02) 6495 2571

Gas Connection The Arthur Kaine Drv Pambula (02) 6495 7121

Barbeques Galore (Bega) 274 Carp St Bega (02) 6492 4054

Camping Outdoors Centre 43 Vulcan St Moruya (02) 4474 3081

Gone Fishin Cnr Ford & Queen Sts Moruya (02) 4474 4381





Bournda Lagoon car park to Bournda Island

This space is available for advertising



Full colour
Great photos



Give the joy of walking to a friend
(and support wildwalks)

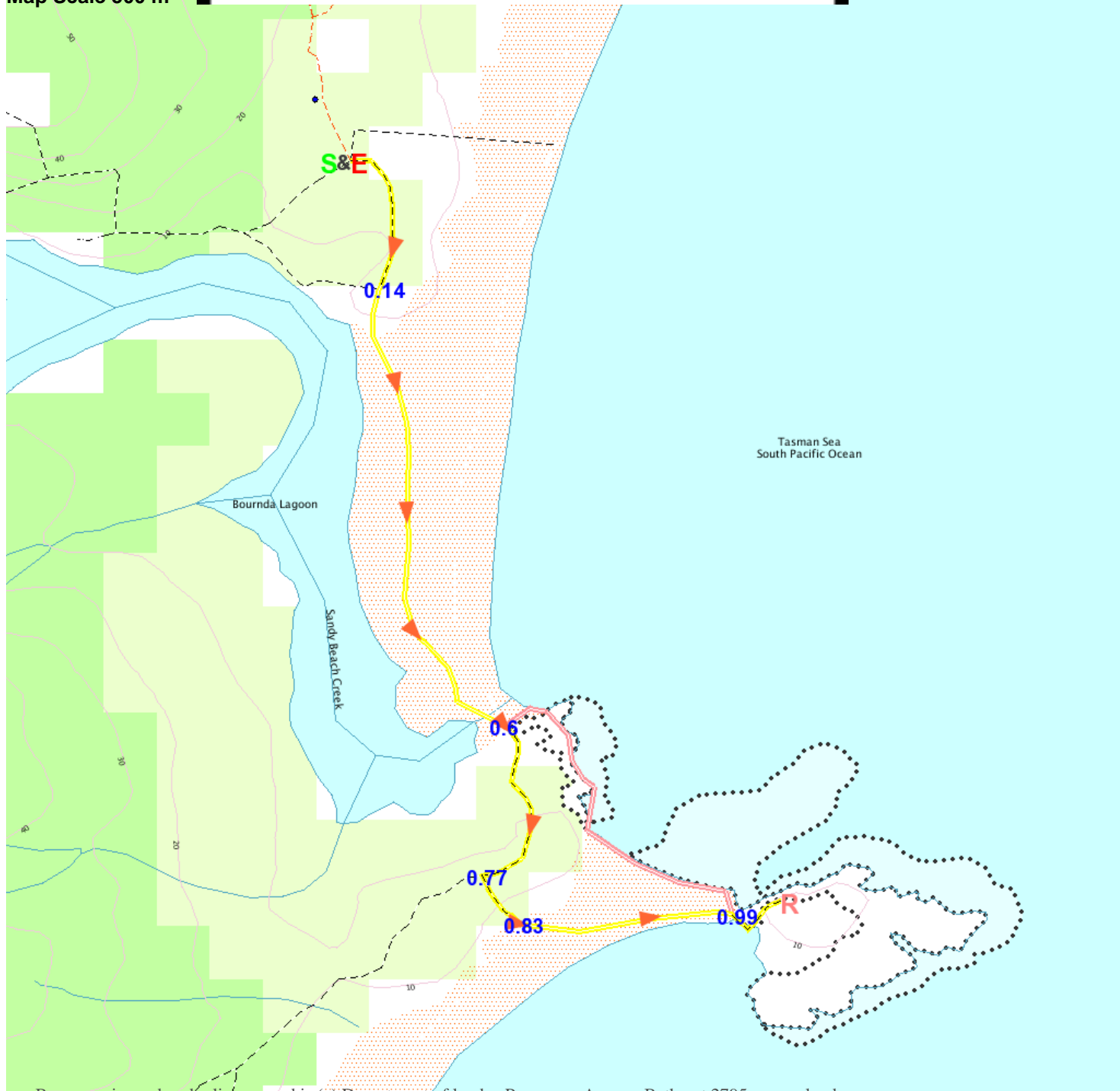
www.wildwalks.com/books.html



A walk for every body



Map Scale 500 m



Base map is used under licence and is (c) Department of lands Panorama Avenue Bathurst 2795 www.lands.nsw.gov.au

