

This walk is the most direct route onto Bournda Beach. The walk heads from the car park through the shaded heath to climb over the dunes and onto the beach. This places you on the beach just north of Bournda Lagoon and Island.

Bournda National Park

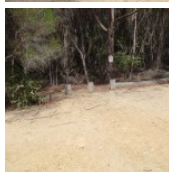
Length: 0.5 km
Time: 10 mins
Climb: 10 m
Style: Return
Rating: Track: Moderate
Where: 9.3 km SSW of Tathra
Transport: car



Visit www.wildwalks.com for more info



Side trips and Alternate routes mentioned in these notes are not included in the tracks overall rating, distance or time estimate. The notes only describe the side trips and Alternate routes in one direction. Allow extra time for resting and exploring areas of interest. Please ensure you and your group are well prepared and equipped for all possible hazards and delays. The authors, staff and owners of wildwalks take care in preparing these notes but will not accept responsibility for any inconvenience, loss or injury sustained by using these notes or maps. Please take care and share your experience through the website. Please check park closures, weather information and Fire Danger Rating just before leaving for your walk. Walk maybe closed during Total Fire Ban. GPS for start and end of this walk: -36.8137,149.9375

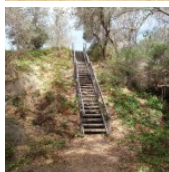


Wildwalks

Download the free Bushwalk Australia eMag

The eMagazine is produced by the community at bushwalk.com and the Wildwalks team
Bushwalk.com Australia's most active bushwalking forum - Check it out.

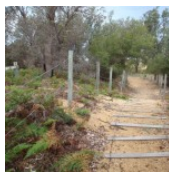
Happy Reading. Matt :)



Bournda Beach car park to Bournda Beach 0.2km 4 mins

(From S) From the car park, this walk heads between the trees at the point where three short vertical logs mark the track. The track heads down through the bush to the base of a set of stairs.

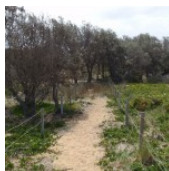
Continue straight: From the intersection, the walk heads up the stairs and over the dune, then down the timber beach steps on the other side. Across the dunes, the walk comes to Bournda Beach.



Bournda Beach

Bournda Beach, Bournda National Park, lies between Tathra and Merimbula, and forms the southern end of Wallagoot Beach. The beach provides some good surf conditions with a south-easterly aspect (not patrolled). At the southern end of the beach is Bournda Island, attached to the beach by a rocky headland and tombola (sand joining the island to mainland). The dunes backing the beach are undergoing rehabilitation. Bournda Beach is accessed by Bournda Rd at either Hobart Beach camping area, Bournda Lagoon or Wallagoot Gap parking areas.

This is a 'Return' style walk - retrace your steps back to the beginning when you are ready.



A list of paper topographical maps that cover this walk

Wolumla 1:25 000 Map Series

Bega 1:100 000 Map Series



Nearby outdoor and camping stores

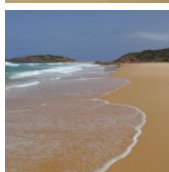
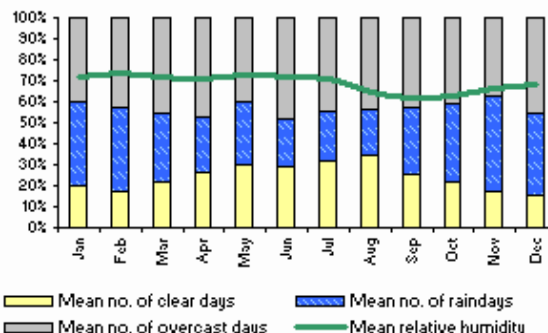
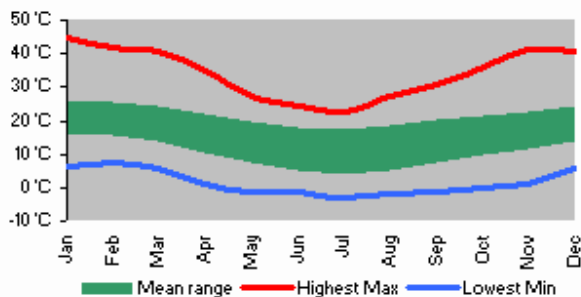
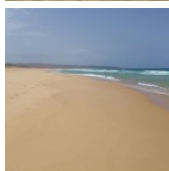
Camping Plus 6 Alice St Merimbula (02) 6495 2571

Gas Connection The Arthur Kaine Drv Pambula (02) 6495 7121

Barbeques Galore (Bega) 274 Carp St Bega (02) 6492 4054

Camping Outdoors Centre 43 Vulcan St Moruya (02) 4474 3081

Gone Fishin Cnr Ford & Queen Sts Moruya (02) 4474 4381



This space is available for advertising



Full colour
Great photos



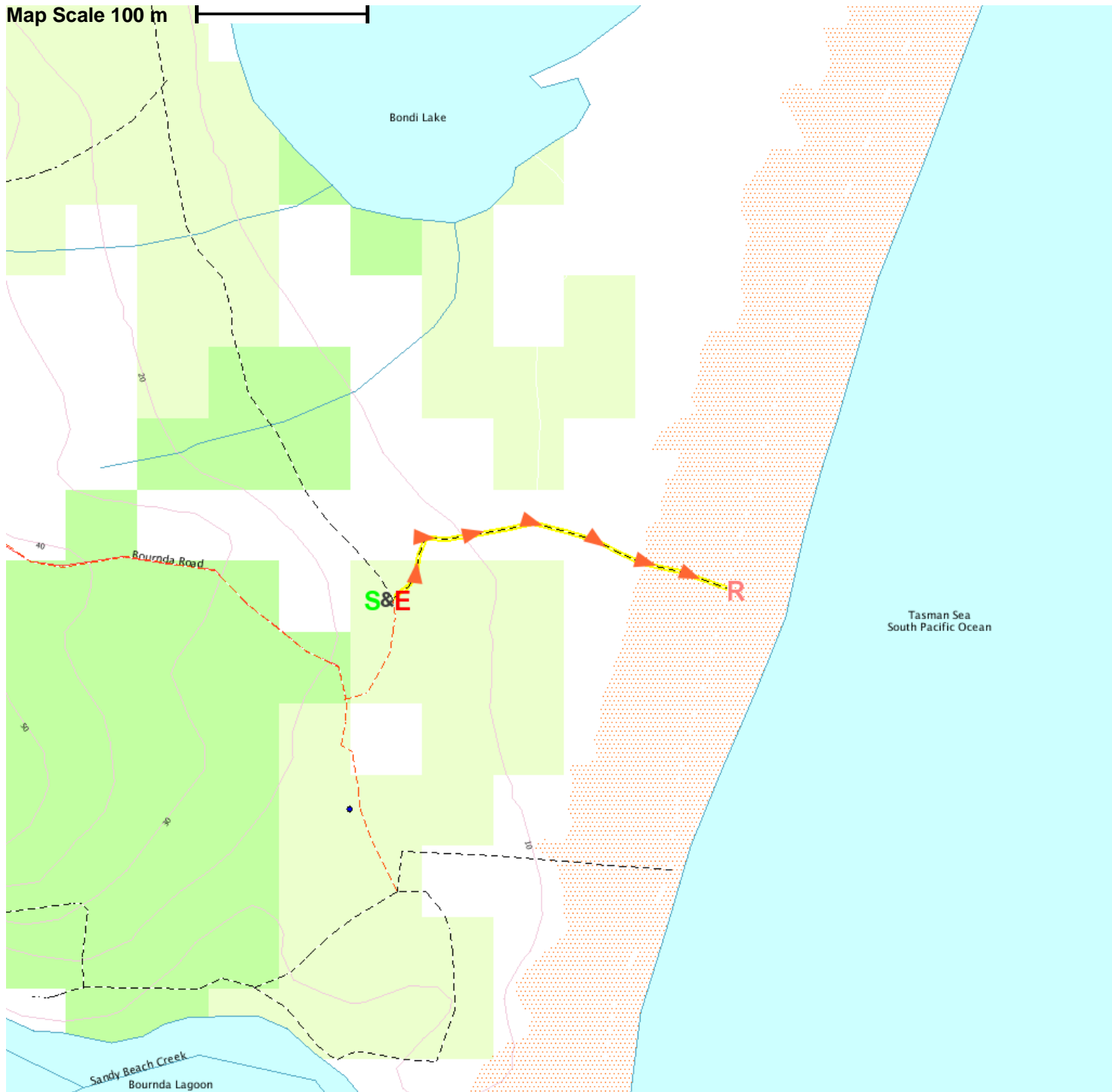
Give the joy of walking to a friend
(and support wildwalks)

www.wildwalks.com/books.html

A walk for every body



Map Scale 100 m



Base map is used under licence and is (c) Department of lands. Panorama Avenue Bathurst 2795 www.lands.nsw.gov.au

