



This walk circumnavigates Black Duck Creek by following the shady Blueberry Ash trail. The walk then returns to Carnley Reserve using the Main Ridge Walking Trail. This relatively short walk has a good combination of shady moist forest and more exposed ridge forest. Make sure you visit the Wildlife Exhibit while at Carnley Reserve. A recommended walk.

**Length:** 2.1 km  
**Time:** 1 Hr  
**Climb:** 89 m  
**Style:** Circuit  
**Rating:** Track: Moderate  
**Where:** 2.6 km W of Adamstown  
**Transport:** bus car



Visit [www.wildwalks.com](http://www.wildwalks.com) for more info



*Side trips and Alternate routes mentioned in these notes are not included in the tracks overall rating, distance or time estimate. The notes only describe the side trips and Alternate routes in one direction. Allow extra time for resting and exploring areas of interest. Please ensure you and your group are well prepared and equipped for all possible hazards and delays. The authors, staff and owners of wildwalks take care in preparing these notes but will not accept responsibility for any inconvenience, loss or injury sustained by using these notes or maps. Please take care and share your experience through the website. Please check park closures, weather information and Fire Danger Rating just before leaving for your walk. Walk maybe closed during Total Fire Ban. GPS for start and end of this walk: -32.937,151.698*



## Wildwalks

Download the free [Bushwalk Australia eMag](http://Bushwalk Australia eMag)

The eMagazine is produced by the community at [bushwalk.com](http://bushwalk.com) and the Wildwalks team  
[Bushwalk.com](http://Bushwalk.com) Australia's most active bushwalking forum - Check it out.

Happy Reading. Matt :)



## Blackbutt Reserve

Blackbutt Reserve, near Newcastle, occupies over 182 hectares of land and provides visitors with the chance to enjoy nature trails, wildlife exhibits, children's playgrounds and recreational facilities. The reserve is the perfect place for a relaxing family picnic or to explore on a bushwalk. Native wildlife, such as the Powerful Owl and the Grey-headed flying fox can be seen within the park. There is an information cottage at Carnley Avenue, which is open 7am to 5pm, or 7am to 7pm during daylight savings. The reserve has car parking at Carnley Avenue, Richley Reserve, Lookout Road and Mahonoy Drive. For more information, phone 02 4904 3344.



## Carnley Ave Reserve

The Carnley Avenue Reserve, within Blackbutt Reserve, is wheelchair accessible and has toilets, drinking fountains, gas/electric barbeques, sheltered picnic tables, a children's playground, fenced displays of kangaroos and emu, a large black duck pond and an information centre that is housed within a replica pioneering cottage. The information cottage has a range of souvenirs, focusing on quality and affordable products. A fee of \$4 per vehicle can be paid from the automatic machines in the car park. The information centre is open 7am to 5pm, or 7am to 7pm during daylight savings. For further information phone: 02 4904 3344.



## Carnley Avenue Reserve to Int of Blueberry Ash Walk & Carnley Trail 0.1km 2 mins

(From S) From the intersection, this walk follows the sealed road, while initially keeping the Black Duck Pond on your left and the replica pioneering cottage directly behind you. This walk continues, passing the Black Duck Pond (on the left) and continues gently uphill for about 150m (passing a sheltered picnic area and children's playground on the right) until coming to a three-way intersection with a gravel trail (on the left), a metal ring fence (on the right) and a 'Main Ridge Walk (loop)' sign.



## Int of Blueberry Ash Walk and Carnley Trail to Int of Rain Forest Walk and Lookout Road 1.2km 20 mins

(From 0.13 km) Turn sharp left: From the intersection, this walk follows the 'Blueberry Ash Walk to Lookout Rd CarPark' sign and gravel trail gently downhill, while leaving the metal ring fence directly behind. This walk continues, undulating through mature forest for about 800m, with Black Duck Creek visible (on the left), until coming to a T-intersection with a sealed road and the 'Blueberry Ash Walk to Carnley Ave Carpark' sign.



Turn left: From the intersection, this walk follows the 'Main Ridge Walk to Lookout Rd Car Park' sign and sealed road gently downhill, while keeping the valley on your left. This walk continues, undulating for about 400m through attractive forest until coming to a three-way intersection with a road and brick buildings (on the left) and yellow metal posts and a 'Main Ridge Walk (Loop)' sign (on the right).



## Rain Forest Walk & Main Ridge Walk to Int of Lookout Road & Main Ridge Trail 0.1km 3 mins

(From 1.32 km) Veer left: From the intersection, this walk follows the sealed road, while passing the two square brick buildings (on your right) and leaving the yellow metal posts (directly behind). This walk continues through a picnic area for about 160m until coming to a three-way intersection with a sealed road and 'Rainforest Walk' sign (on the right).



### Int of Lookout Road & Main Ridge Trail to Int of Main Ridge Trail & Lookout Road 0.4km 5 mins

(From 1.47 km) Turn right: From the intersection, this walk follows the 'Rainforest Walk' sign gently downhill, while keeping the valley on your right. This walk continues through dense forest for about 170m until coming to a T-intersection, with a 'Rainforest Walk to Lookout Rd Carpark' sign indicating a right turn.

Continue straight: From the intersection, this walk follows the 'Wildlife Exhibit' sign and sealed road gently downhill, while keeping the valley on the right. This walk continues, undulating for about 260m until coming to a three-way intersection, with a 'Lookout Road Carpark' sign and gently uphill sealed road on the left.



### Int of Main Ridge Trail & Lookout Road to Int of Boardwalk & Carnley Trail 0.2km 5 mins

(From 1.87 km) Continue straight: From the intersection, this walk follows the 'Wildlife Exhibitions 120m' sign and sealed road gently downhill, while keeping the 'Lookout Road Carpark' sign directly behind you. This walk continues through forest for about 140m, until coming to a four-way intersection with the Wildlife Exhibits boardwalk (on the left), a car park ahead and a disabled car park (on the right).

Veer left: From the intersection, this walk follows the sealed trail gently downhill, while initially keeping the 'Animals' sign and elevated timber boardwalk on the left. This walk continues for about 90m, passing an 'Animals' sign and 'Information' sign (on the left) and concrete stairs (on the right), until coming to a three-way intersection, with a large timber fenced gate (on the left).



### Blackbutt Wildlife Exhibits

This boardwalk in the Blackbutt Reserve offers wildlife exhibits on an elevated timber boardwalk which is wheelchair accessible. Some of the wildlife that you are likely to encounter are kangaroos, koalas, wombats, Lace monitors, Wonga Pigeons, Red-winged Parrots, Black-winged Stilt, Buff-banded Rail, Herons, Eastern long-necked Turtle, Kingfishers, Turquoise Parrot, Banded Plover, Peaceful Dove, Cockatoos, Lorikeets, True Parrots, Major Mitchell Cockatoo, Bush Stone Curlew, Long-tailed Finch and Barking Owls. Entry is free and the exhibit is open from 9.00am to 5.00pm every day (closed Christmas Day, Good Friday and until 1pm ANZAC Day). Personal koala encounters are available at 2pm daily and cost \$3.50/person. For further information, phone: 02 4904 3344. [More info](#)



### Int of Boardwalk & Carnley Trail to Carnley Avenue Reserve 0km

(From 2.1 km) Turn right: From the intersection, this walk follows the sealed trail gently downhill and towards the Black Duck Pond, while initially keeping the large timber fenced gate on your left. This walk continues for about 20m until coming to a four-way intersection, with the replica pioneering cottage, Black Duck Pond and a 'Richley Reserve' sign (on the left).



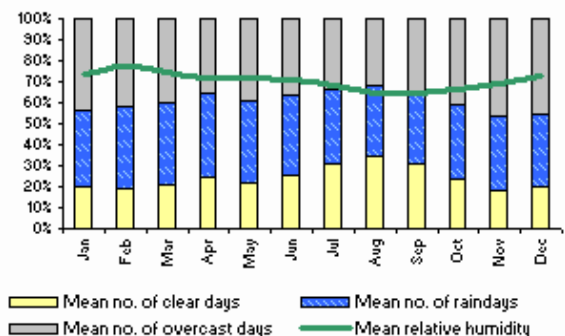
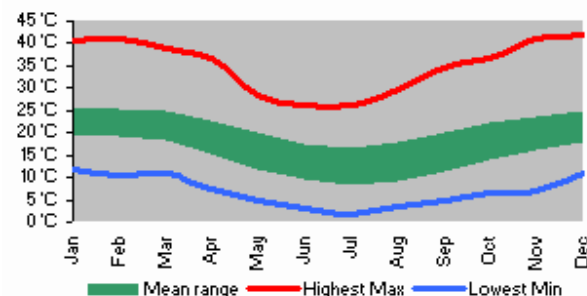
### A list of paper topographical maps that cover this walk

- [Wallsend](#) 1:25 000 Map Series
- Newcastle 1:100 000 Map Series



### Nearby outdoor and camping stores

- Kathmandu** 6 Northcott Drv Kotara (02) 4952 1233
- Aussie Disposal Newcastle** 4/ 14 Northcott Drv Kotara (02) 4965 5500
- Boots Great Outdoors** 27 Lambton Rd Broadmeadow (02) 4969 4655
- Camping World** 3/ 276 Macquarie Rd Warners Bay (02) 4956 6183
- Wallsend Army Disposal Store** Cnr Tyrrell & Council Sts Wallsend (02) 4951 5725





# Black Duck Creek Circuit Walk

This space is available for advertising



Full colour  
Great photos



Give the joy of walking to a friend  
(and support wildwalks)

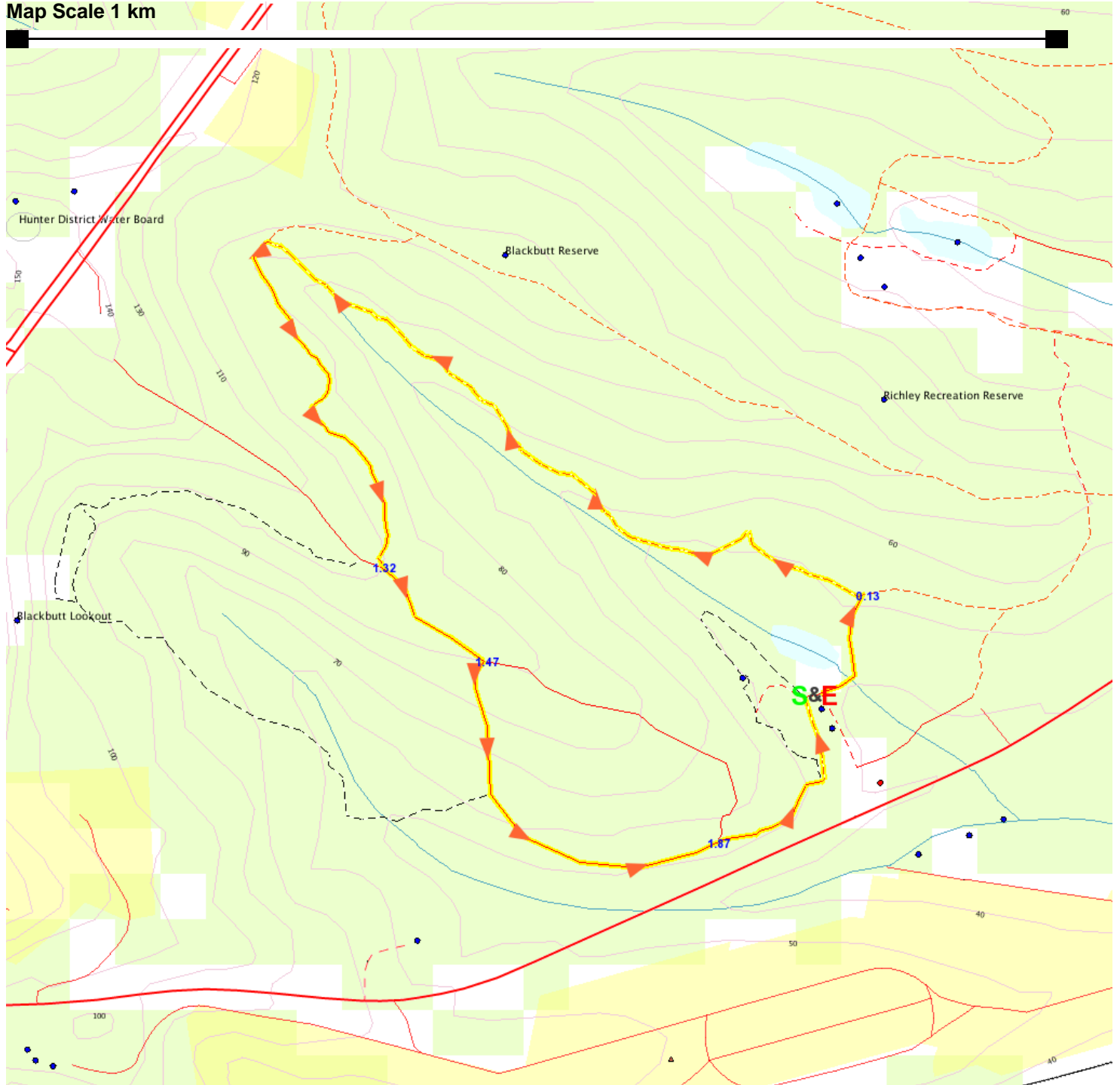
[www.wildwalks.com/books.html](http://www.wildwalks.com/books.html)



A walk for every body



Map Scale 1 km



Base map is used under licence and is (c) Department of lands Panorama Avenue Bathurst 2795 [www.lands.nsw.gov.au](http://www.lands.nsw.gov.au)

